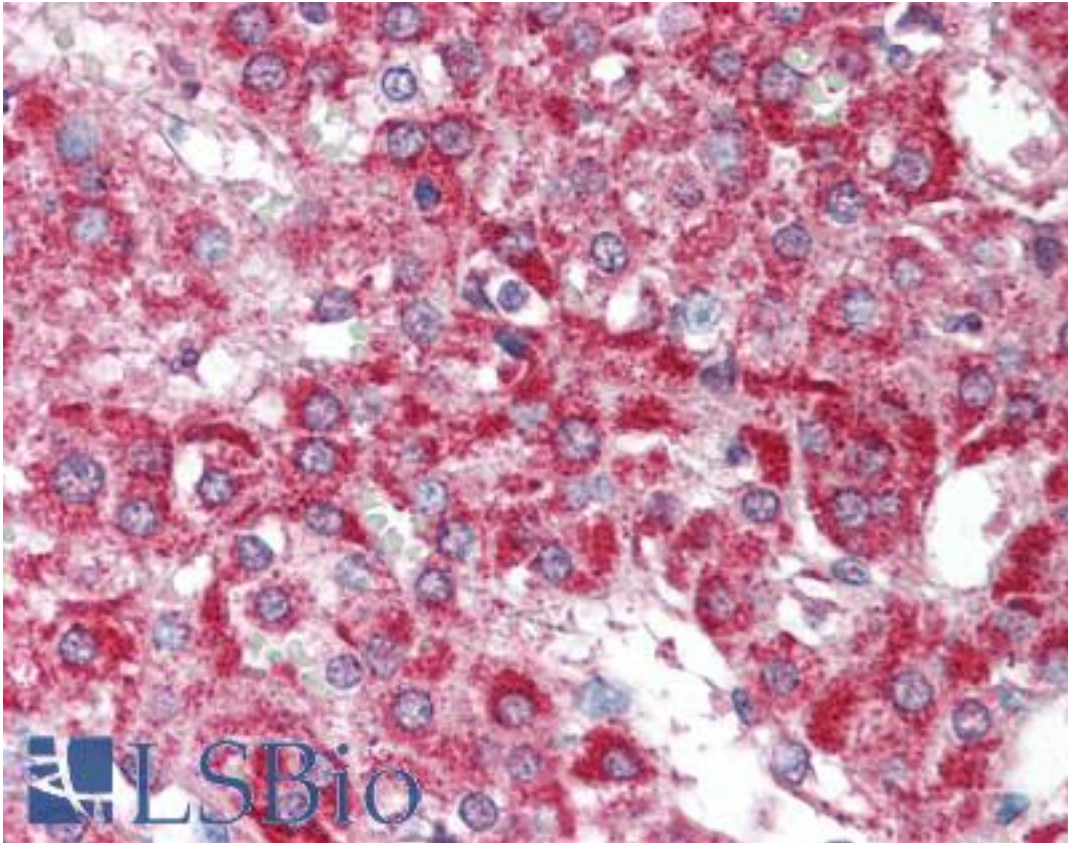


**HUS1B Rabbit anti-Human Polyclonal (aa104-117) Antibody - LS-B376 - LSBio**

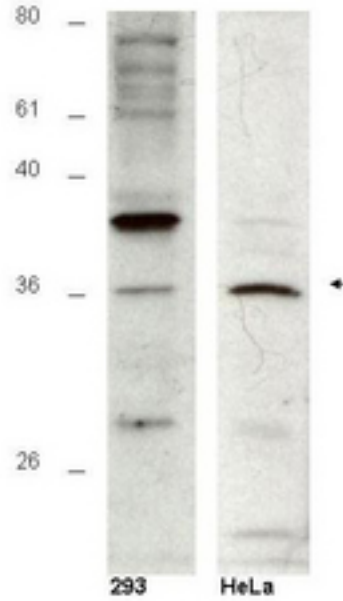
<b>CatalogID:</b>	LS-B376
<b>Validation:</b>	This antibody replaces catalog number LS-C19126. It has been validated for use in the following assays: IHC.
<b>Target:</b>	HUS1 checkpoint homolog b (S. pombe) (HUS1B)
<b>Synonyms:</b>	HUS1B Antibody, Checkpoint protein HUS1B Antibody, RP11-532F6.1 Antibody, HHUS1B Antibody
<b>Host</b>	HUS1B antibody was produced in Rabbit
<b>Clonality:</b>	Polyclonal
<b>Immunogen Species:</b>	HUS1B antibody was raised against Human
<b>Antigen Type:</b>	Synthetic peptide
<b>Immunogen:</b>	HUS1B antibody was raised against synthetic peptide from human HUS1B.
<b>Specificity:</b>	Amino acids 104-117 of human Hus1B protein.
<b>Epitope:</b>	aa104-117
<b>Reactivity:</b>	Human, Mouse, Rat
<b>Purification:</b>	Immunoaffinity purified
<b>Presentation:</b>	0.02 M potassium phosphate, 0.15 M sodium chloride, pH 7.2, 0.01% sodium azide.
<b>Recommended Storage:</b>	+4°C or -20°C, Avoid repeated freezing and thawing.
<b>Usage Summary:</b>	Immunohistochemistry: LS-B376 was validated for use in immunohistochemistry on a panel of 21 formalin-fixed, paraffin-embedded (FFPE) human tissues after heat induced antigen retrieval in pH 6.0 citrate buffer. After incubation with the primary antibody, slides were incubated with biotinylated secondary antibody, followed by alkaline phosphatase-streptavidin and chromogen. The stained slides were evaluated by a pathologist to confirm staining specificity. The optimal working concentration for LS-B376 was determined to be 5 ug/ml.
<b>Uses:</b>	IHC - Paraffin (5 µg/ml), Western blot (1:500 - 1:5000), ELISA (1:20000 - 1:100000) (Optimal dilution to be determined by the researcher)
<b>Size:</b>	50 µg
<b>Concentration:</b>	1 mg/ml

**Immunohistochemistry Image:**



Anti-HUS1B antibody IHC of human adrenal. Immunohistochemistry of formalin-fixed, paraffin-embedded tissue after heat-induced antigen retrieval. Antibody LS-B376 concentration 5 ug/ml.

**Western Blot Image:**



Anti-Hus1B Antibody - Western Blot. Western blot of affinity purified anti-Hus1B antibody shows detection of a 36kD band corresponding to Hus1B in a HeLa cell lysate (arrowhead). The staining pattern in 293 cells is less clear, showing a predominant band at 39 kD. Personal Communication, A-Lien Lu-Chang, U. Maryland, Baltimore, MD.

**Requested From:**

Japan

Laboratory Reagent For In Vitro Research Use Only

Not for resale without prior written consent from LifeSpan BioSciences, Inc.

Created on 9/23/2014

© 2014 LifeSpan BioSciences