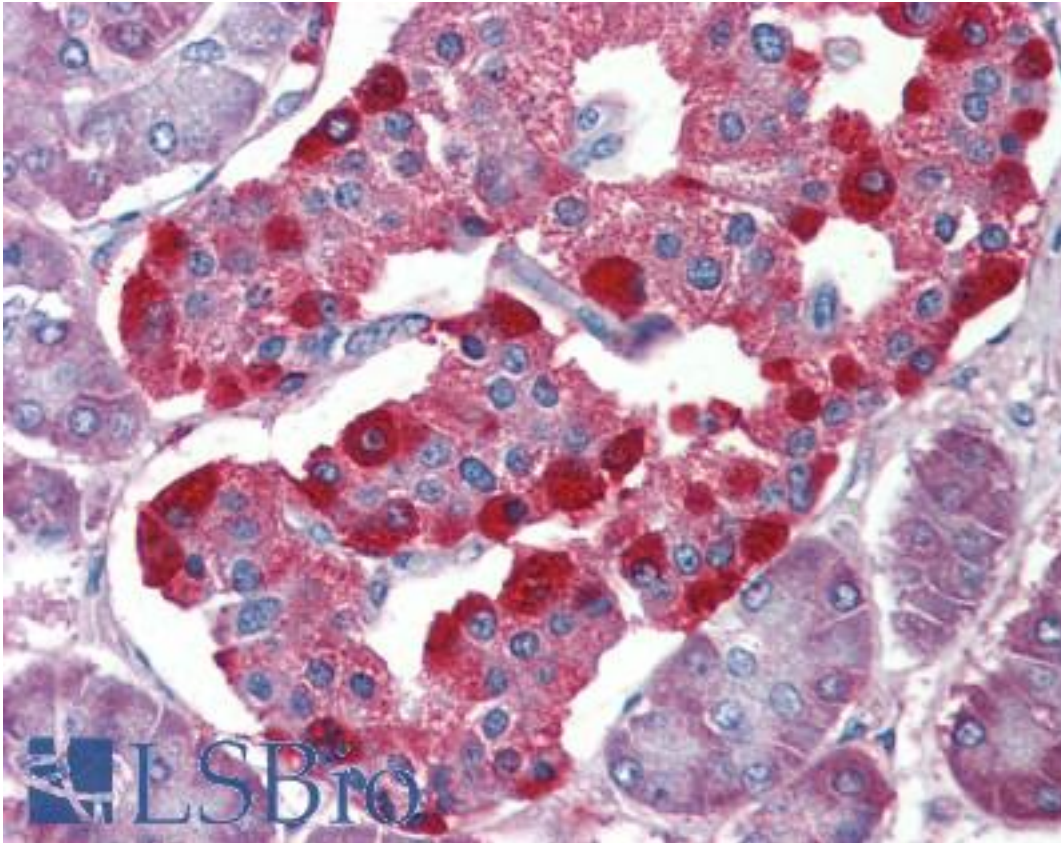


4E-BP2 / EIF4EBP2 Rabbit anti-Human Polyclonal (aa99-120) Antibody - LS-B3749 - LSBio	
CatalogID:	LS-B3749
Validation:	This antibody replaces catalog number LS-C63174. It has been validated for use in the following assays: IHC-P.
Target:	eukaryotic translation initiation factor 4E binding protein 2 (EIF4EBP2)
Synonyms:	EIF4EBP2 Antibody, 4E-BP2 Antibody, 4EBP2 Antibody, EIF4E-binding protein 2 Antibody, PHASII Antibody
Host	EIF4EBP2 antibody was produced in Rabbit
Clonality:	Polyclonal
Immunogen Species:	4E-BP2 / EIF4EBP2 antibody was raised against Human
Antigen Type:	Synthetic peptide - KLH conjugated
Immunogen:	4E-BP2 / EIF4EBP2 antibody was raised against human PHAS-II synthetic peptide (residues 99-120) was synthesized and the peptide coupled to KLH. This sequence is 96% homologous to mouse PHAS-11 over these residues.
Specificity:	Detects 17 and 20 kD proteins, corresponding to the apparent molecular mass of PHAS-II and its phosphorylated state on SDS-PAGE immunoblots.
Epitope:	aa99-120
Reactivity:	Human, Mouse, Rat, Bovine, Dog, Pig
Purification:	Immunoaffinity purified
Presentation:	BBS, pH 8.4 (25 mM sodium borate, 100 mM boric acid, 75 mM sodium chloride, 5 mM EDTA)
Recommended Storage:	Short term 4°C, long term aliquot and store at -20°C, avoid freeze thaw cycles. For maximum product recovery, after thawing, centrifuge the product vial before removing cap.
Usage Summary:	Immunohistochemistry: LS-B3749 was validated for use in immunohistochemistry on a panel of 21 formalin-fixed, paraffin-embedded (FFPE) human tissues after heat induced antigen retrieval in pH 6.0 citrate buffer. After incubation with the primary antibody, slides were incubated with biotinylated secondary antibody, followed by alkaline phosphatase-streptavidin and chromogen. The stained slides were evaluated by a pathologist to confirm staining specificity. The optimal working concentration for LS-B3749 was determined to be 10 ug/ml.
Uses:	IHC - Paraffin (10 µg/ml), Western blot (4 µg/ml) (Optimal dilution to be determined by the researcher)
Size:	50 µg
Concentration:	1 mg/ml

Immunohistochemistry Image:



Anti-EIF4EBP2 / 4EBP2 antibody IHC of human pancreas. Immunohistochemistry of formalin-fixed, paraffin-embedded tissue after heat-induced antigen retrieval. Antibody LS-B3749 concentration 10 ug/ml.

Requested From:

Japan

Laboratory Reagent For In Vitro Research Use Only

Not for resale without prior written consent from LifeSpan BioSciences, Inc.

Created on 9/23/2014

© 2014 LifeSpan BioSciences