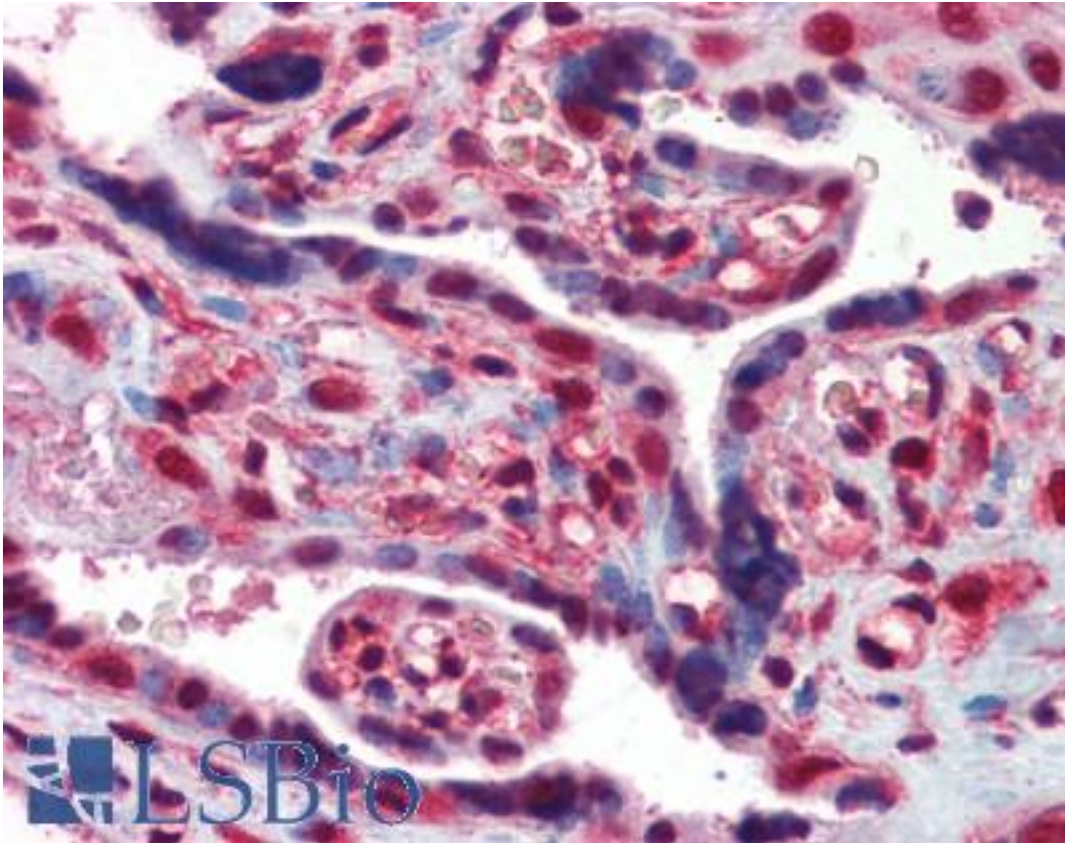


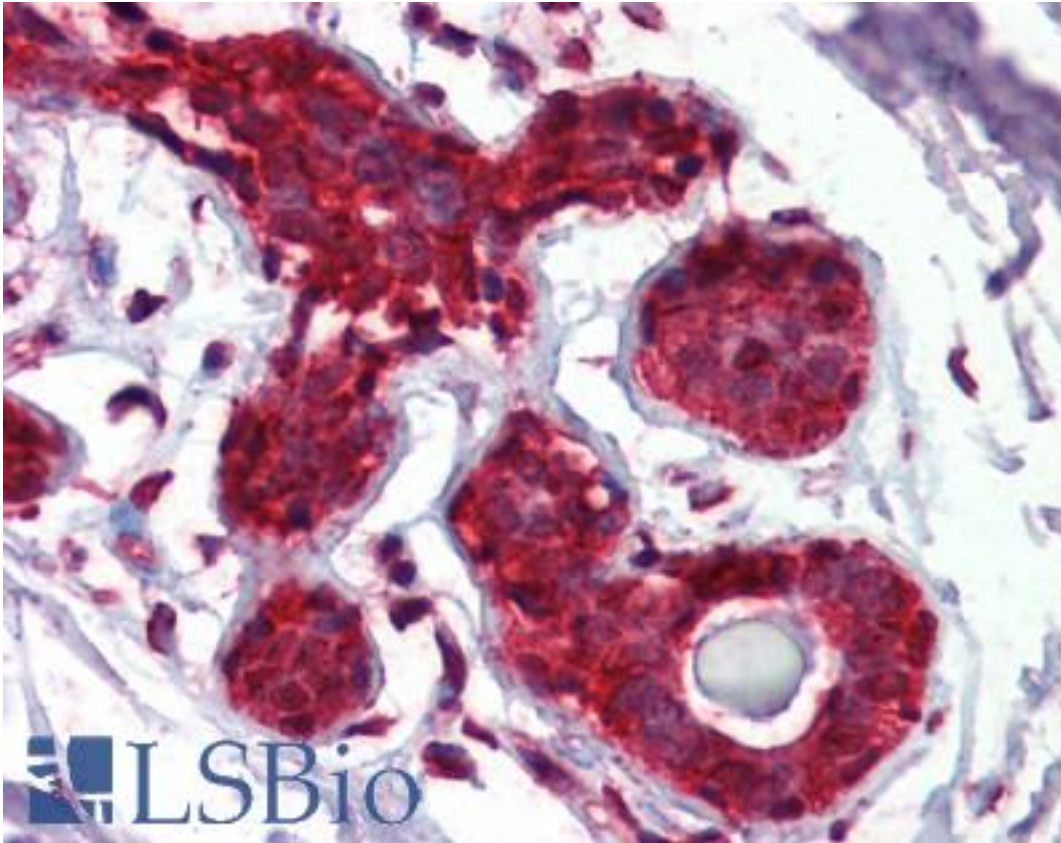
EIF4EBP1 / 4EBP1 Rabbit anti-Human Polyclonal (aa101-118) Antibody - LS-B3748 - LSBio	
CatalogID:	LS-B3748
Validation:	This antibody replaces catalog number LS-C63173. It has been validated for use in the following assays: IHC-P.
Target:	eukaryotic translation initiation factor 4E binding protein 1 (EIF4EBP1)
Synonyms:	EIF4EBP1 Antibody, 4E-BP1 Antibody, 4EBP1 Antibody, BP-1 Antibody, PHAS-I Antibody, EIF4E-binding protein 1 Antibody
Host	EIF4EBP1 antibody was produced in Rabbit
Clonality:	Polyclonal
Immunogen Species:	EIF4EBP1 / 4EBP1 antibody was raised against Human
Antigen Type:	Synthetic peptide - KLH conjugated
Immunogen:	EIF4EBP1 / 4EBP1 antibody was raised against an 18 residue synthetic peptide SPEDKRAGGEESQFEMDI based on the human PHAS-I (residues 101-118) and the peptide coupled to KLH. This sequence is identical to rat and mouse PHAS- I over these residues. Percent identity by BLAST analysis: Human, Gorilla, Mouse, Rat, Hamster, Rabbit (100%); Marmoset, Goat, Elephant, Dog, Bat, Bovine, Horse (94%); Panda (83%).
Specificity:	Detects multiple bands at 19-25 kD, corresponding to the apparent molecular mass of the various phosphorylation states of PHAS-I protein on SDS-PAGE immunoblots. This antibody provides a simple read-out for PKB (Akt) activity in vivo through the use of gel-shift assays. Antibody specificity has been confirmed in Western blot peptide competition studies.
Epitope:	aa101-118
Reactivity:	Human, Gorilla, Mouse, Rat, Hamster, Rabbit
Predicted Reactivity:	Monkey, Bat, Bovine, Dog, Goat, Horse
Purification:	Immunoaffinity purified
Presentation:	BBS, pH 8.4 (25 mM sodium borate, 100 mM boric acid, 75 mM sodium chloride, 5 mM EDTA)
Recommended Storage:	Short term 4°C, long term aliquot and store at -20°C, avoid freeze thaw cycles. For maximum product recovery, after thawing, centrifuge the product vial before removing cap.
Usage Summary:	Immunohistochemistry: LS-B3748 was validated for use in immunohistochemistry on a panel of 21 formalin-fixed, paraffin-embedded (FFPE) human tissues after heat induced antigen retrieval in pH 6.0 citrate buffer. After incubation with the primary antibody, slides were incubated with biotinylated secondary antibody, followed by alkaline phosphatase-streptavidin and chromogen. The stained slides were evaluated by a pathologist to confirm staining specificity. The optimal working concentration for LS-B3748 was determined to be 10 ug/ml.
Uses:	IHC - Paraffin (5 - 10 µg/ml), Western blot (4 µg/ml), Gel shift (Optimal dilution to be determined by the researcher)
Size:	50 µg
Concentration:	0.9 mg/ml

Immunohistochemistry Image:



Anti-EIF4EBP1 / 4EBP1 antibody IHC of human placenta. Immunohistochemistry of formalin-fixed, paraffin-embedded tissue after heat-induced antigen retrieval. Antibody LS-B3748 concentration 5 ug/ml.

Immunohistochemistry Image:



Anti-EIF4EBP1 / 4EBP1 antibody IHC of human breast. Immunohistochemistry of formalin-fixed, paraffin-embedded tissue after heat-induced antigen retrieval. Antibody LS-B3748 concentration 5 ug/ml.

Requested From:

Japan

Laboratory Reagent For In Vitro Research Use Only

Not for resale without prior written consent from LifeSpan BioSciences, Inc.

Created on 9/23/2014

© 2014 LifeSpan BioSciences