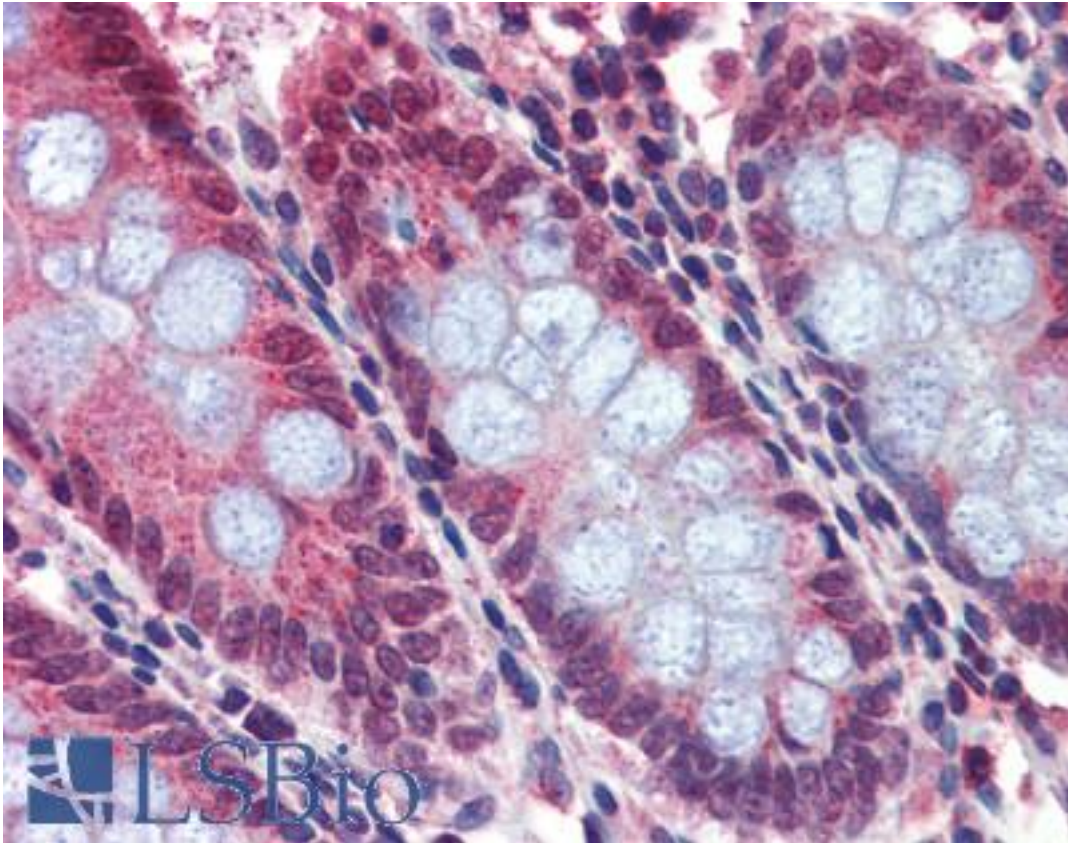


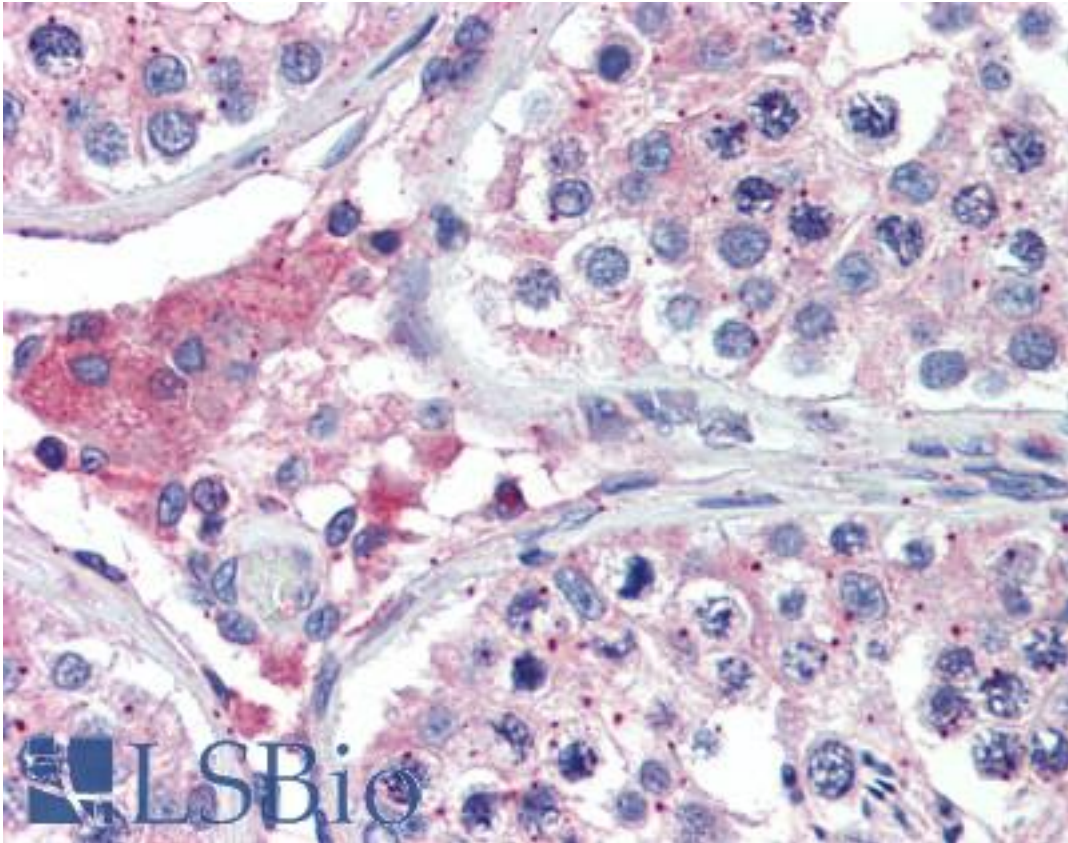
BACE2 Rabbit anti-Human Polyclonal (aa44-59) Antibody - LS-B3747 - LSBio	
<b>CatalogID:</b>	LS-B3747
<b>Validation:</b>	This antibody replaces catalog number LS-C375. It has been validated for use in the following assays: IHC-P.
<b>Target:</b>	beta-site APP-cleaving enzyme 2 (BACE2)
<b>Synonyms:</b>	BACE2 Antibody, 56 kDa aspartic-like protease Antibody, AEPLC Antibody, ALP56 Antibody, Aspartic-like protease 56 kDa Antibody, APL56 Antibody, BAE2 Antibody, Beta-secretase 2 Antibody, ASP21 Antibody, CDA13 Antibody, DRAP Antibody, Memapsin-1 Antibody, Asp 1 Antibody, ASP1 Antibody, Aspartyl protease 1 Antibody, Theta-secretase Antibody, Beta secretase 2 Antibody, CEAP1 Antibody, Down region aspartic protease Antibody
<b>Family / Subfamily:</b>	Protease / Aspartic A1
<b>Host</b>	BACE2 antibody was produced in Rabbit
<b>Clonality:</b>	Polyclonal
<b>Immunogen Species:</b>	BACE2 antibody was raised against Human
<b>Antigen Type:</b>	Synthetic peptide
<b>Immunogen:</b>	BACE2 antibody was raised against synthetic peptide from human BACE2.
<b>Specificity:</b>	synthetic peptide (aptpggtpaerhadg) corresponding to amino acids 44 to 59 of human BACE2
<b>Epitope:</b>	aa44-59
<b>Reactivity:</b>	Human, Mouse, Rat
<b>Purification:</b>	Immunoaffinity purified
<b>Presentation:</b>	PBS, 0.02% sodium azide.
<b>Recommended Storage:</b>	Short term 4°C, long term aliquot and store at -20°C, avoid freeze thaw cycles. Store undiluted.
<b>Uses:</b>	IHC - Paraffin (5 µg/ml), Western blot (0.5 - 1 µg/ml), ELISA (Optimal dilution to be determined by the researcher)
<b>Size:</b>	50 µg
<b>Concentration:</b>	1 mg/ml

**Immunohistochemistry Image:**



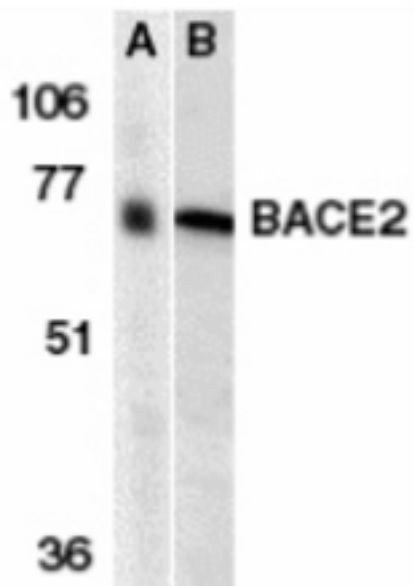
Anti-BACE2 antibody IHC of human colon. Immunohistochemistry of formalin-fixed, paraffin-embedded tissue after heat-induced antigen retrieval. Antibody LS-B3747 concentration 5 ug/ml.

**Immunohistochemistry Image:**



Anti-BACE2 antibody IHC of human testis. Immunohistochemistry of formalin-fixed, paraffin-embedded tissue after heat-induced antigen retrieval. Antibody LS-B3747 concentration 5 ug/ml.

**Western Blot Image:**



Western blot of BACE2 in human (A) and mouse (B) heart tissue lysates with BACE2 antibody at 1 ug/ml.

<b>Requested From:</b>	Japan
Laboratory Reagent For In Vitro Research Use Only	
Not for resale without prior written consent from LifeSpan BioSciences, Inc.	
Created on 9/23/2014	
© 2014 LifeSpan BioSciences	