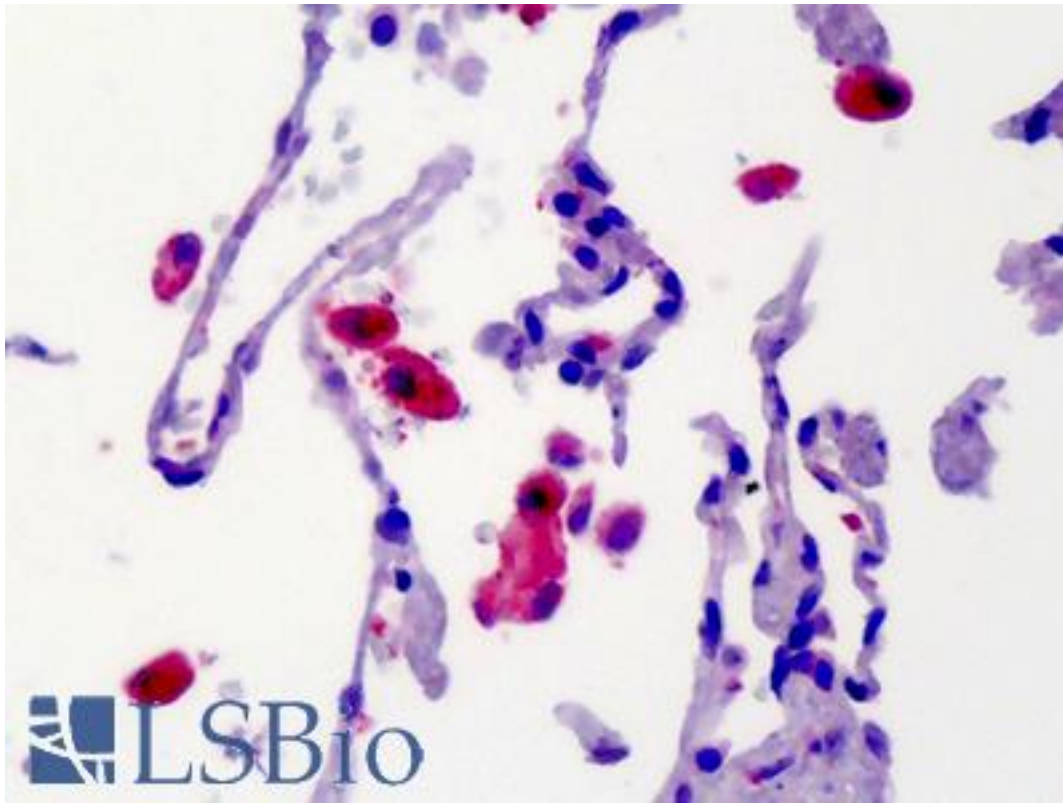


CAMK2 / CAMKII Rabbit anti-Rat Polyclonal Antibody - LS-B3743 - LSBio

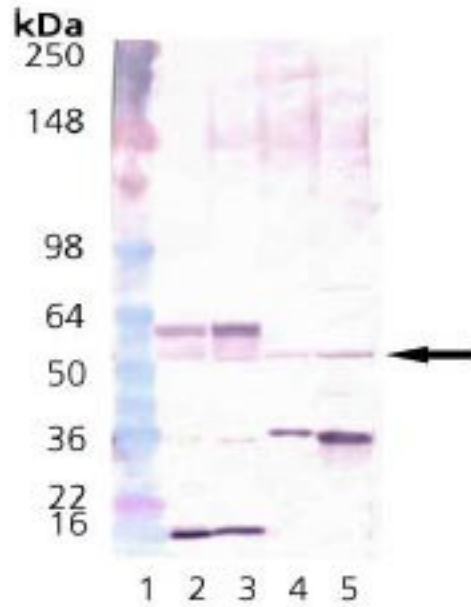
CatalogID:	LS-B3743
Validation:	This antibody replaces catalog number LS-C63160. It has been validated for use in the following assays: IHC-P.
Target:	Calcium/Calmodulin-dependent Protein Kinase Type II (CAMK2)
Host	Calcium/Calmodulin-dependent Protein Kinase Type II (CAMK2) antibody was produced in Rabbit
Clonality:	Polyclonal
Immunogen Species:	CAMK2 / CAMKII antibody was raised against Rat
Antigen Type:	Synthetic peptide - KLH conjugated
Immunogen:	CAMK2 / CAMKII antibody was raised against a 14 residue synthetic peptide CTRFTDEYQLFEEL based on the rat multifunctional calmodulin-dependent kinase II delta isoform (residues 7-20) and the peptide coupled to KLH. Percent identity by BLAST analysis: Human, Gorilla, Gibbon, Monkey, Marmoset, Mouse, Rat, Elephant, Dog, Bovine, Horse, Rabbit, Pig, Opossum, Chicken, Xenopus, Pufferfish, Zebrafish (100%); Orangutan (93%).
Specificity:	Detects proteins of 50-60 kD, corresponding to apparent molecular mass of CaMKII isoforms on SDS-PAGE immunoblots. Recombinant rat calmodulin-dependent protein kinase II alpha subunits expressed in sf9 insect cells are also detected. As the sequences of the rat alpha, delta, and gamma isoforms are conserved over this amino terminus region, this antibody is expected to recognize the delta, gamma and alpha isoforms. This antibody is not expected to cross-react with the beta isoform. Proteins of unknown identity, ~40, 45 and 90 kD, may be detected on immunoblot analysis with some lysates.
Reactivity:	Rat, Human, Gorilla, Gibbon, Monkey, Mouse, Bovine, Dog, Horse, Pig, Rabbit, Chicken, Xenopus, Zebrafish
Predicted Reactivity:	Orangutan
Purification:	Immunoaffinity purified
Presentation:	BBS, pH 8.2 (25 mM sodium borate, 100 mM boric acid, 75 mM sodium chloride, 5 mM EDTA)
Recommended Storage:	Store at -20°C.
Usage Summary:	Immunohistochemistry: LS-B3743 was validated for use in immunohistochemistry on a panel of 21 formalin-fixed, paraffin-embedded (FFPE) human tissues after heat induced antigen retrieval in pH 6.0 citrate buffer. After incubation with the primary antibody, slides were incubated with biotinylated secondary antibody, followed by alkaline phosphatase-streptavidin and chromogen. The stained slides were evaluated by a pathologist to confirm staining specificity. The optimal working concentration for LS-B3743 was determined to be 10 ug/ml.
Uses:	IHC - Paraffin (10 µg/ml), Western blot (1:1000) (Optimal dilution to be determined by the researcher)
Size:	50 µg

Immunohistochemistry Image:



Anti-CAMK2 antibody IHC of human lung. Immunohistochemistry of formalin-fixed, paraffin-embedded tissue after heat-induced antigen retrieval. Antibody LS-B3743 concentration 10 ug/ml.

Western Blot Image:



Western Blot Analysis of CaMKII Polyclonal Antibody:

Lane 1: MWM, Lane 2: mouse brain extract, Lane 3: rat brain extract, Lane 4: HeLa, Lane 5: Hs-67 cell lysate.

Requested From:

Japan

Laboratory Reagent For In Vitro Research Use Only

Not for resale without prior written consent from LifeSpan BioSciences, Inc.

Created on 9/23/2014

© 2014 LifeSpan BioSciences