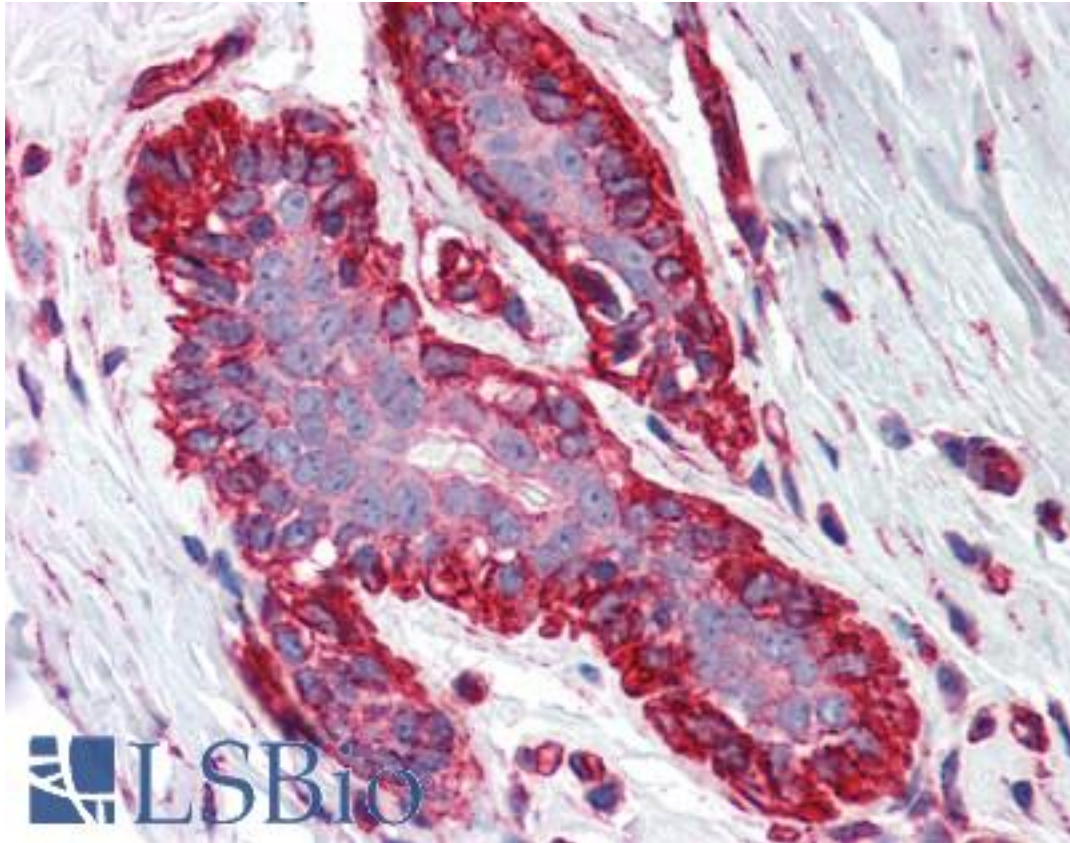


**GGA3 Rabbit anti-Human Polyclonal (aa400-415) Antibody - LS-B373 - LSBio**

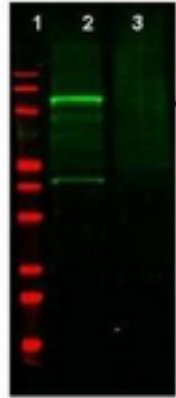
<b>CatalogID:</b>	LS-B373
<b>Validation:</b>	This antibody replaces catalog number LS-C18959. It has been validated for use in the following assays: IHC.
<b>Target:</b>	golgi-associated, gamma adaptin ear containing, ARF binding protein 3 (GGA3)
<b>Synonyms:</b>	GGA3 Antibody, KIAA0154 Antibody
<b>Host</b>	GGA3 antibody was produced in Rabbit
<b>Clonality:</b>	Polyclonal
<b>Immunogen Species:</b>	GGA3 antibody was raised against Human
<b>Antigen Type:</b>	Synthetic peptide
<b>Immunogen:</b>	GGA3 antibody was raised against synthetic peptide from human GGA3.
<b>Specificity:</b>	Amino acids 400-415 of Human GGA3.
<b>Epitope:</b>	aa400-415
<b>Reactivity:</b>	Human, Chimpanzee
<b>Purification:</b>	Immunoaffinity purified
<b>Presentation:</b>	0.02 M potassium phosphate, 0.15 M sodium chloride, pH 7.2, 0.01% sodium azide.
<b>Recommended Storage:</b>	Long term: -20°C; Short term: +4°C. Avoid repeat freeze-thaw cycles.
<b>Usage Summary:</b>	Immunohistochemistry: LS-B373 was validated for use in immunohistochemistry on a panel of 21 formalin-fixed, paraffin-embedded (FFPE) human tissues after heat induced antigen retrieval in pH 6.0 citrate buffer. After incubation with the primary antibody, slides were incubated with biotinylated secondary antibody, followed by alkaline phosphatase-streptavidin and chromogen. The stained slides were evaluated by a pathologist to confirm staining specificity. The optimal working concentration for LS-B373 was determined to be 2.5 ug/ml.
<b>Uses:</b>	IHC - Paraffin (2.5 µg/ml), Immunofluorescence, Western blot (1:500 - 1:3000), ELISA (1:10000 - 1:50000) (Optimal dilution to be determined by the researcher)
<b>Size:</b>	50 µg
<b>Concentration:</b>	0.62 mg/ml

**Immunohistochemistry Image:**



Anti-GGA3 antibody IHC of human breast. Immunohistochemistry of formalin-fixed, paraffin-embedded tissue after heat-induced antigen retrieval. Antibody LS-B373 concentration 5 ug/ml.

**Western Blot Image:**



Anti-GGA3 Antibody - Western Blot. Western blot of Affinity Purified anti-GGA3 antibody shows detection of a band at ~110 kD corresponding to GFP-GGA3 fusion protein present in a lysate of HEK293 cells over-expressing the recombinant protein (lane 2, arrowhead). Pre-incubation of antibody with immunizing peptide blocks specific staining (lane 3). MW markers are shown in lane 1 (700 nm channel - red). Approximately 35 ug of lysate was separated on a 16% Tricine gel by SDS-PAGE and transferred onto nitrocellulose. After blocking the membrane was probed with the primary antibody diluted to 1:600. Reaction occurred overnight at 4C followed by washes and reaction with a 1:10000 dilution of IRDye800 conjugated Gt-a-Rabbit IgG [H&L] ( for 45 min at room temperature (800 nm channel - green). IRDye800 fluorescence image was captured using the Odyssey Infrared Imaging System developed by LI-COR. IRDye is a trademark of LI-COR, Inc. Other detection systems will yield similar results.

**Requested From:**

Japan

Laboratory Reagent For In Vitro Research Use Only

Not for resale without prior written consent from LifeSpan BioSciences, Inc.

Created on 9/23/2014

© 2014 LifeSpan BioSciences