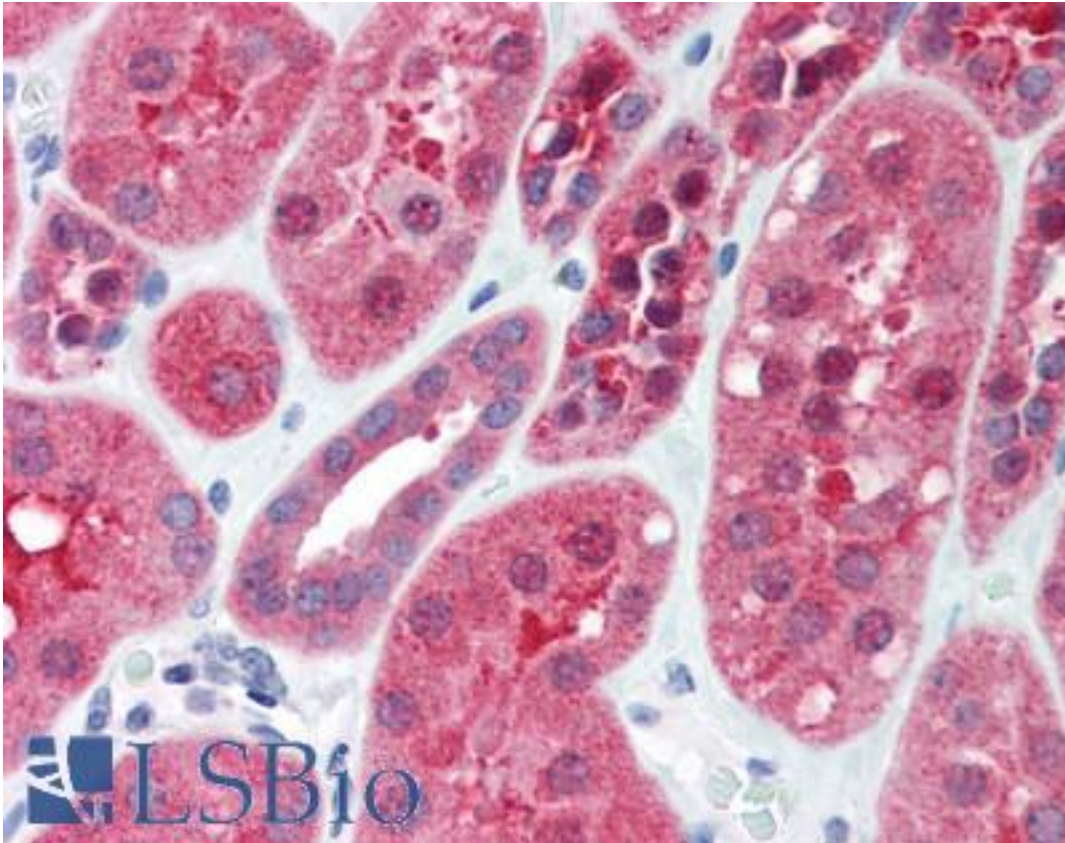


GGA2 Rabbit anti-Human Polyclonal (aa249-265) Antibody - LS-B372 - LSBio

CatalogID:	LS-B372
Validation:	This antibody replaces catalog number LS-C19105. It has been validated for use in the following assays: IHC.
Target:	golgi-associated, gamma adaptin ear containing, ARF binding protein 2 (GGA2)
Synonyms:	GGA2 Antibody, KIAA1080 Antibody, VEAR Antibody
Host	GGA2 antibody was produced in Rabbit
Clonality:	Polyclonal
Immunogen Species:	GGA2 antibody was raised against Human
Antigen Type:	Synthetic peptide
Immunogen:	GGA2 antibody was raised against synthetic peptide from human GGA2.
Specificity:	Amino acids 249-265 of Human GGA2. This gene encodes a member of the Golgi-localized, gamma adaptin ear-containing, ARF-binding (GGA) family. This family includes ubiquitous coat proteins that regulate the trafficking of proteins between the trans-Golgi network and the lysosome. These proteins share an amino-terminal VHS domain that mediates sorting of the mannose 6-phosphate receptors at the trans-Golgi network.
Epitope:	aa249-265
Reactivity:	Human
Purification:	Immunoaffinity purified
Presentation:	0.02 M potassium phosphate, 0.15 M sodium chloride, pH 7.2, 0.01% sodium azide.
Recommended Storage:	+4°C or -20°C, Avoid repeated freezing and thawing.
Usage Summary:	Immunohistochemistry: LS-B372 was validated for use in immunohistochemistry on a panel of 21 formalin-fixed, paraffin-embedded (FFPE) human tissues after heat induced antigen retrieval in pH 6.0 citrate buffer. After incubation with the primary antibody, slides were incubated with biotinylated secondary antibody, followed by alkaline phosphatase-streptavidin and chromogen. The stained slides were evaluated by a pathologist to confirm staining specificity. The optimal working concentration for LS-B372 was determined to be 2.5 ug/ml.
Uses:	IHC - Paraffin (2.5 µg/ml), ELISA (Optimal dilution to be determined by the researcher)
Size:	50 µg

Immunohistochemistry Image:



Anti-GGA2 antibody IHC of human kidney. Immunohistochemistry of formalin-fixed, paraffin-embedded tissue after heat-induced antigen retrieval. Antibody LS-B372 concentration 5 ug/ml.

Requested From:

Japan

Laboratory Reagent For In Vitro Research Use Only

Not for resale without prior written consent from LifeSpan BioSciences, Inc.

Created on 9/23/2014

© 2014 LifeSpan BioSciences