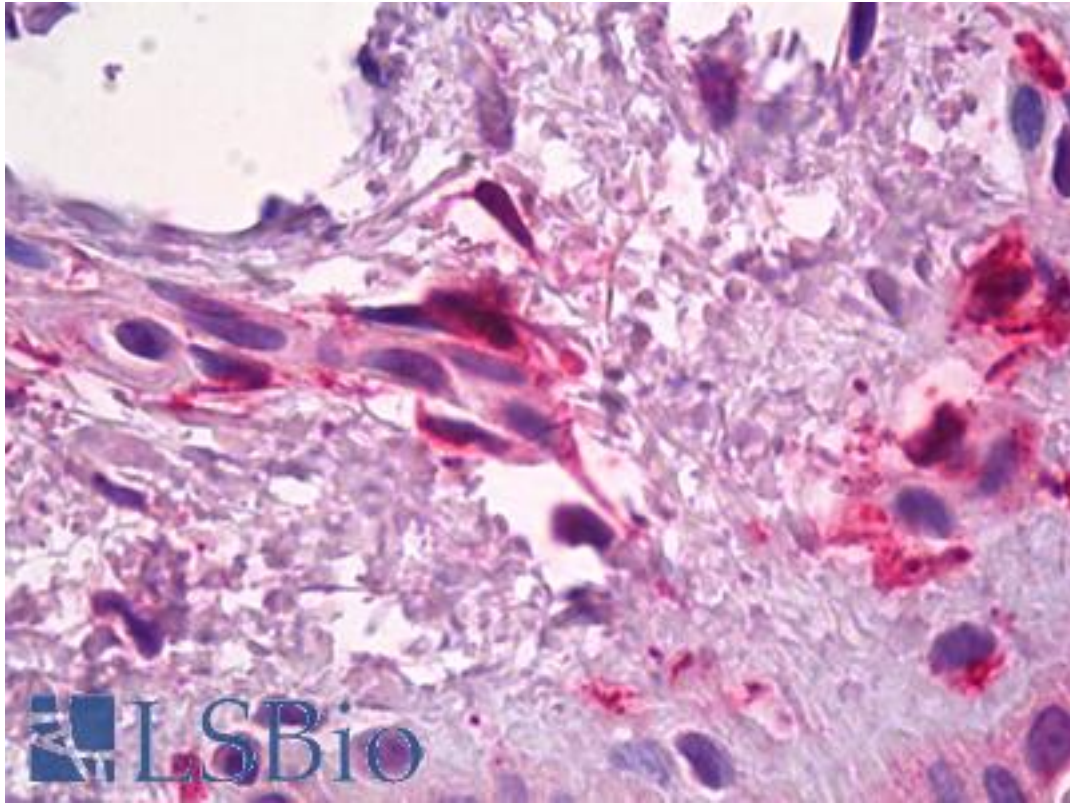


**F13A1 / Factor XIIIa Goat anti-Human Polyclonal Antibody - LS-B3711 - LSBio**

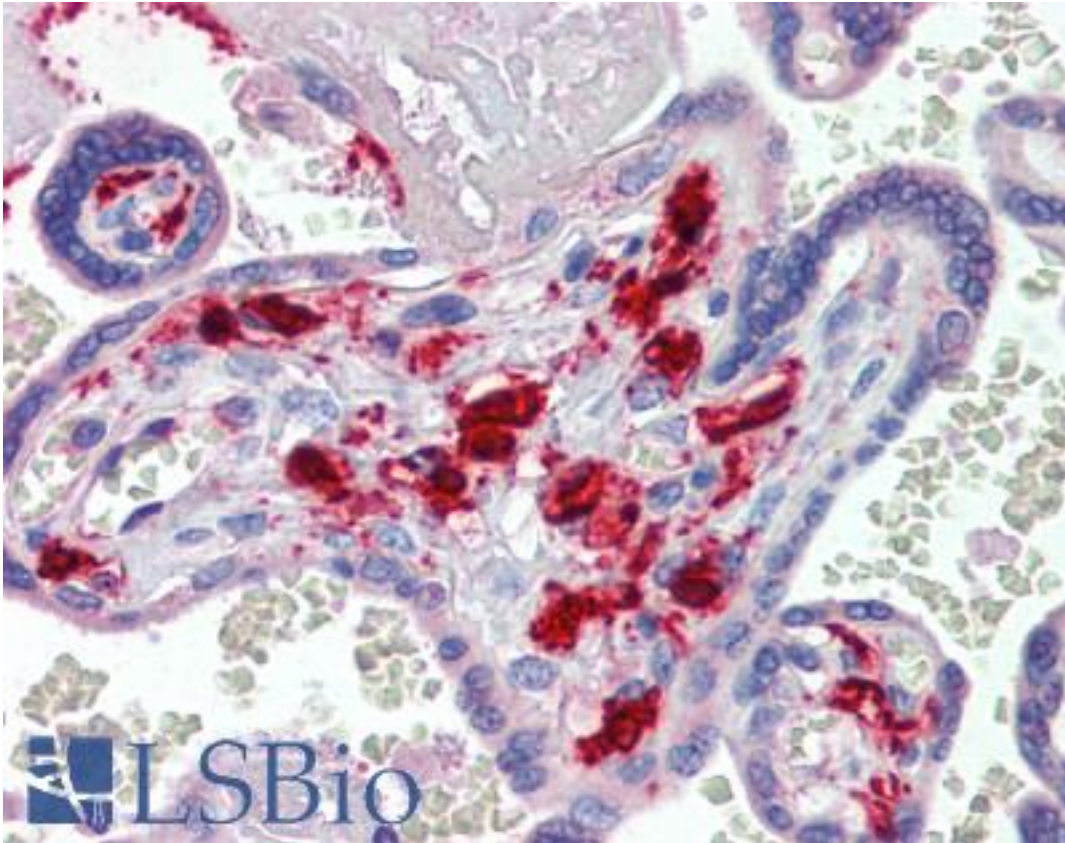
<b>CatalogID:</b>	LS-B3711
<b>Validation:</b>	This antibody replaces catalog number LS-C108884. It has been validated for use in the following assays: IHC-P.
<b>Target:</b>	coagulation factor XIII, A1 polypeptide (F13A1)
<b>Synonyms:</b>	F13A1 Antibody, Coagulation factor XIIIa Antibody, Factor XIIIa Antibody, Fibrinolytic Antibody, FSF, A subunit Antibody, Transglutaminase. plasma Antibody, Transglutaminase A chain Antibody, F13A Antibody, TGASE Antibody
<b>Host</b>	F13A1 antibody was produced in Goat
<b>Clonality:</b>	Polyclonal
<b>Immunogen Species:</b>	F13A1 / Factor XIIIa antibody was raised against Human
<b>Antigen Type:</b>	Synthetic peptide
<b>Immunogen:</b>	F13A1 / Factor XIIIa antibody was raised against synthetic peptide C-TSVHLFKERWDTNK from an internal region of human F13A1 / Factor XIIIa (NP_000120.2). Percent identity by BLAST analysis: Human, Gorilla, Gibbon (100%); Monkey, Marmoset, Panda (93%); Mouse, Rat, Hamster, Bat, Bovine, Dog, Horse, Pig (86%).
<b>Specificity:</b>	Human F13A1 / Factor XIIIa.
<b>Reactivity:</b>	Human, Gorilla, Gibbon
<b>Predicted Reactivity:</b>	Monkey
<b>Purification:</b>	Immunoaffinity purified
<b>Presentation:</b>	Tris-buffered saline, pH 7.3, 0.5% BSA, 0.02% sodium azide
<b>Recommended Storage:</b>	Short term 4°C, long term aliquot and store at -20°C, avoid freeze thaw cycles.
<b>Usage Summary:</b>	Peptide ELISA: antibody detection limit dilution 1:32000. Immunohistochemistry: LS-B3711 was validated for use in immunohistochemistry on a panel of 21 formalin-fixed, paraffin-embedded (FFPE) human tissues after heat induced antigen retrieval in pH 6.0 citrate buffer. After incubation with the primary antibody, slides were incubated with biotinylated secondary antibody, followed by alkaline phosphatase-streptavidin and chromogen. The stained slides were evaluated by a pathologist to confirm staining specificity. The optimal working concentration for LS-B3711 was determined to be 3-6 ug/ml.
<b>Uses:</b>	IHC - Paraffin (3 - 6 µg/ml), ELISA (Optimal dilution to be determined by the researcher)
<b>Size:</b>	50 µg
<b>Concentration:</b>	0.5 mg/ml

**Immunohistochemistry Image:**



Anti-F13A1 / Factor XIIIa antibody IHC of human skin, dermal inflammatory cells.  
Immunohistochemistry of formalin-fixed, paraffin-embedded tissue after heat-induced antigen retrieval. Antibody LS-B3711 concentration 3 ug/ml.

**Immunohistochemistry Image:**



Anti-F13A1 / Factor XIIIa antibody IHC of human placenta. Immunohistochemistry of formalin-fixed, paraffin-embedded tissue after heat-induced antigen retrieval. Antibody LS-B3711 concentration 3 ug/ml.

**Requested From:**

Japan

Laboratory Reagent For In Vitro Research Use Only

Not for resale without prior written consent from LifeSpan BioSciences, Inc.

Created on 9/23/2014

© 2014 LifeSpan BioSciences