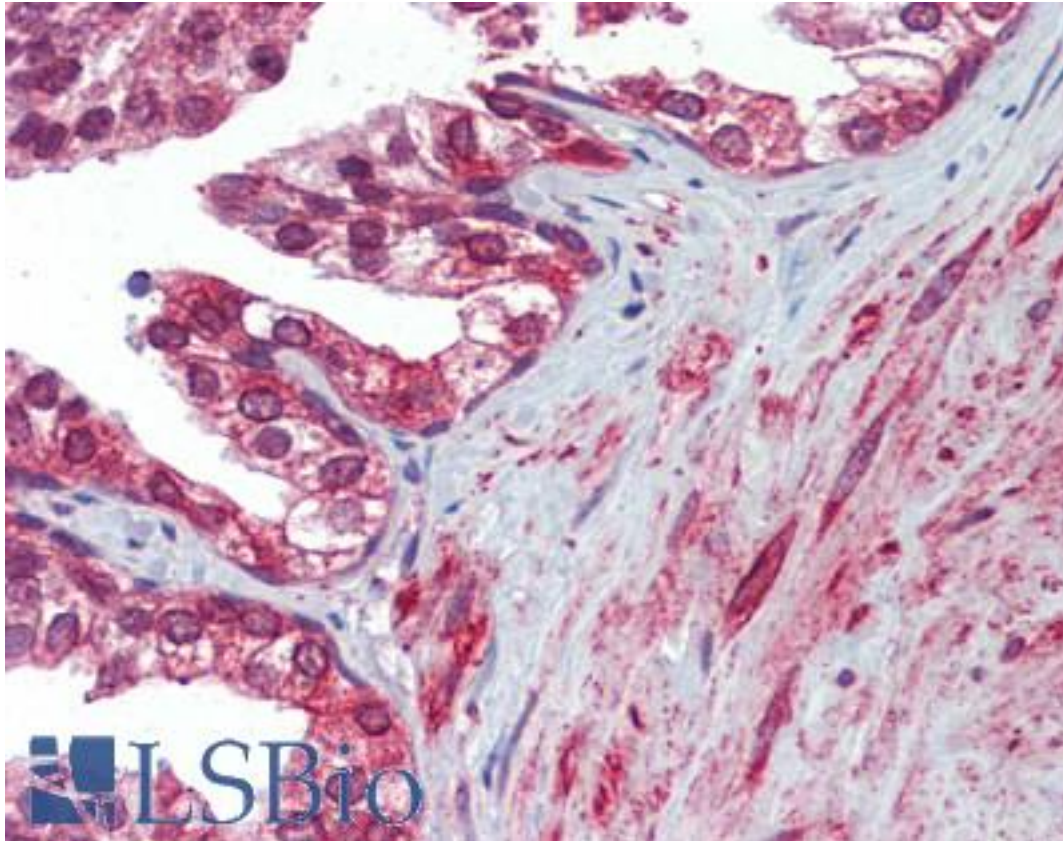


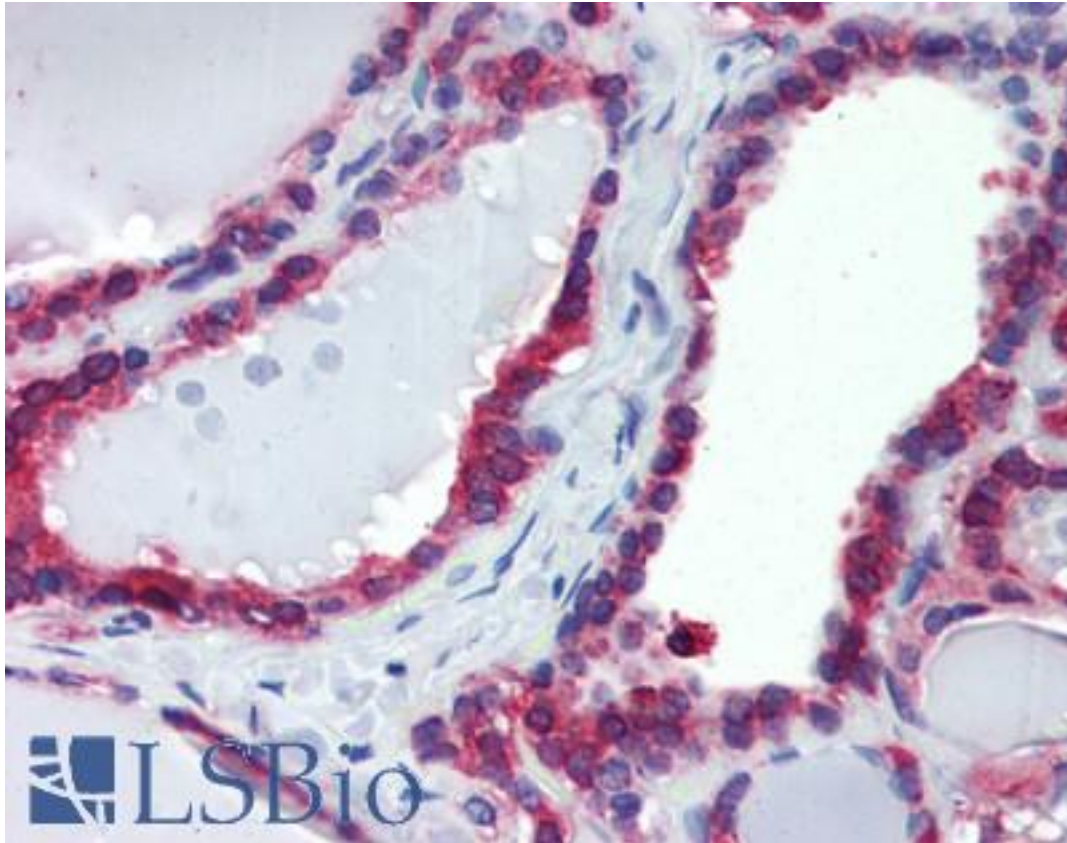
| CANX / Calnexin Rabbit anti-Dog Polyclonal Antibody - LS-B3705 - LSBio | |
|--|---|
| CatalogID: | LS-B3705 |
| Validation: | This antibody replaces catalog number LS-C104848. It has been validated for use in the following assays: IHC-P. |
| Target: | calnexin (CANX) |
| Synonyms: | CANX Antibody, CNX Antibody, Calnexin Antibody, IP90 Antibody, p90 Antibody |
| Host | CANX antibody was produced in Rabbit |
| Clonality: | Polyclonal |
| Immunogen Species: | CANX / Calnexin antibody was raised against Dog |
| Antigen Type: | Synthetic peptide - KLH conjugated |
| Immunogen: | CANX / Calnexin antibody was raised against synthetic peptide derived from sequence near the amino-terminus of canine Calnexin, conjugated to KLH. |
| Reactivity: | Dog, Human, Monkey, Mouse, Rat, Bovine, Guinea pig, Hamster, Pig, Rabbit, Sheep, Xenopus |
| Purification: | Protein A purified |
| Presentation: | PBS, pH 7.2, 0.09% azide, 50% glycerol |
| Recommended Storage: | Store at -20°C. |
| Usage Summary: | Immunohistochemistry: LS-B3705 was validated for use in immunohistochemistry on a panel of 21 formalin-fixed, paraffin-embedded (FFPE) human tissues after heat induced antigen retrieval in pH 6.0 citrate buffer. After incubation with the primary antibody, slides were incubated with biotinylated secondary antibody, followed by alkaline phosphatase-streptavidin and chromogen. The stained slides were evaluated by a pathologist to confirm staining specificity. The optimal working concentration for LS-B3705 was determined to be 10 ug/ml |
| Uses: | IHC - Paraffin (5 - 10 µg/ml), Western blot (1:1000) (Optimal dilution to be determined by the researcher) |
| Size: | 50 µg |
| Concentration: | 1 mg/ml |

Immunohistochemistry Image:



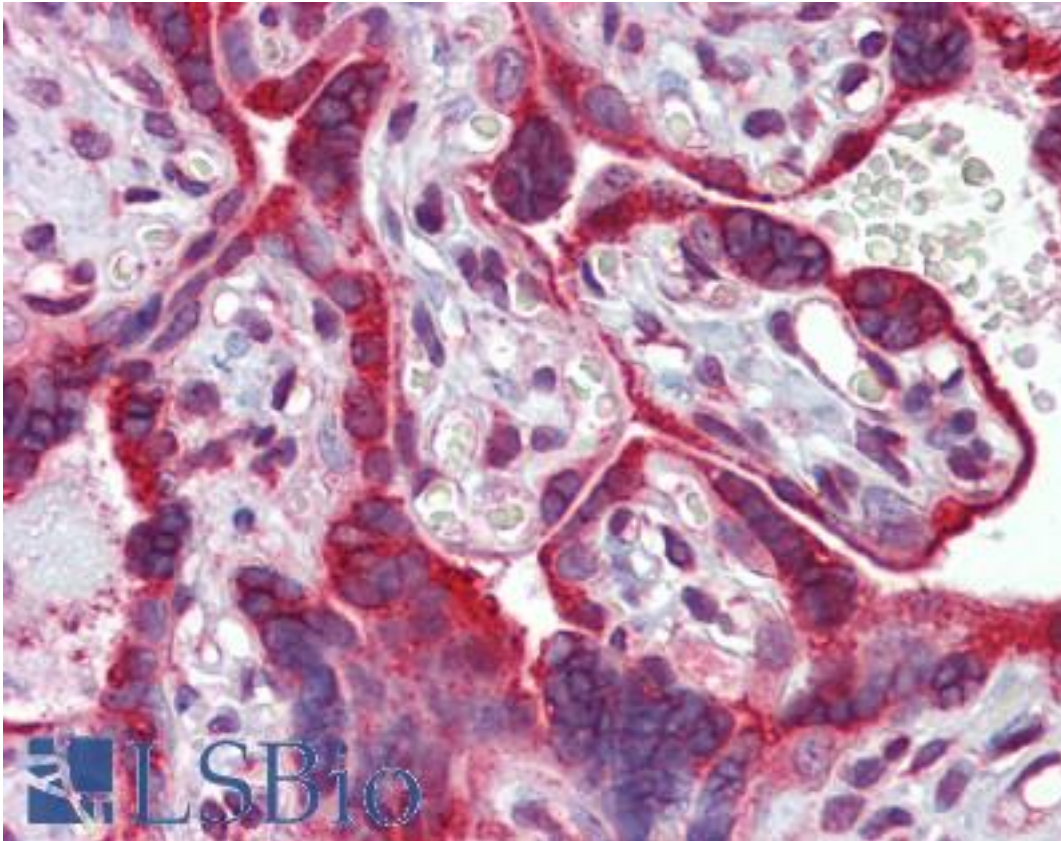
Anti-Calnexin antibody IHC of human prostate. Immunohistochemistry of formalin-fixed, paraffin-embedded tissue after heat-induced antigen retrieval. Antibody LS-B3705 concentration 5 ug/ml.

Immunohistochemistry Image:



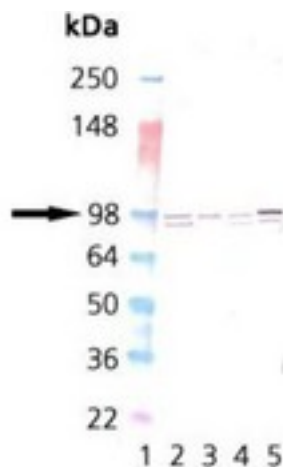
Anti-Calnexin antibody IHC of human thyroid. Immunohistochemistry of formalin-fixed, paraffin-embedded tissue after heat-induced antigen retrieval. Antibody LS-B3705 concentration 5 ug/ml.

Immunohistochemistry Image:



Anti-Calnexin antibody IHC of human placenta. Immunohistochemistry of formalin-fixed, paraffin-embedded tissue after heat-induced antigen retrieval. Antibody LS-B3705 concentration 5 ug/ml.

Western Blot Image:



Western Blot Analysis: Lane 1: MWM,
Lane 2: Vero, Lane 3: 3T3, Lane 4: PC-12,
Lane 5: HeLa

Requested From:

Japan

Laboratory Reagent For In Vitro Research Use Only

Not for resale without prior written consent from LifeSpan BioSciences, Inc.

Created on 9/23/2014

© 2014 LifeSpan BioSciences