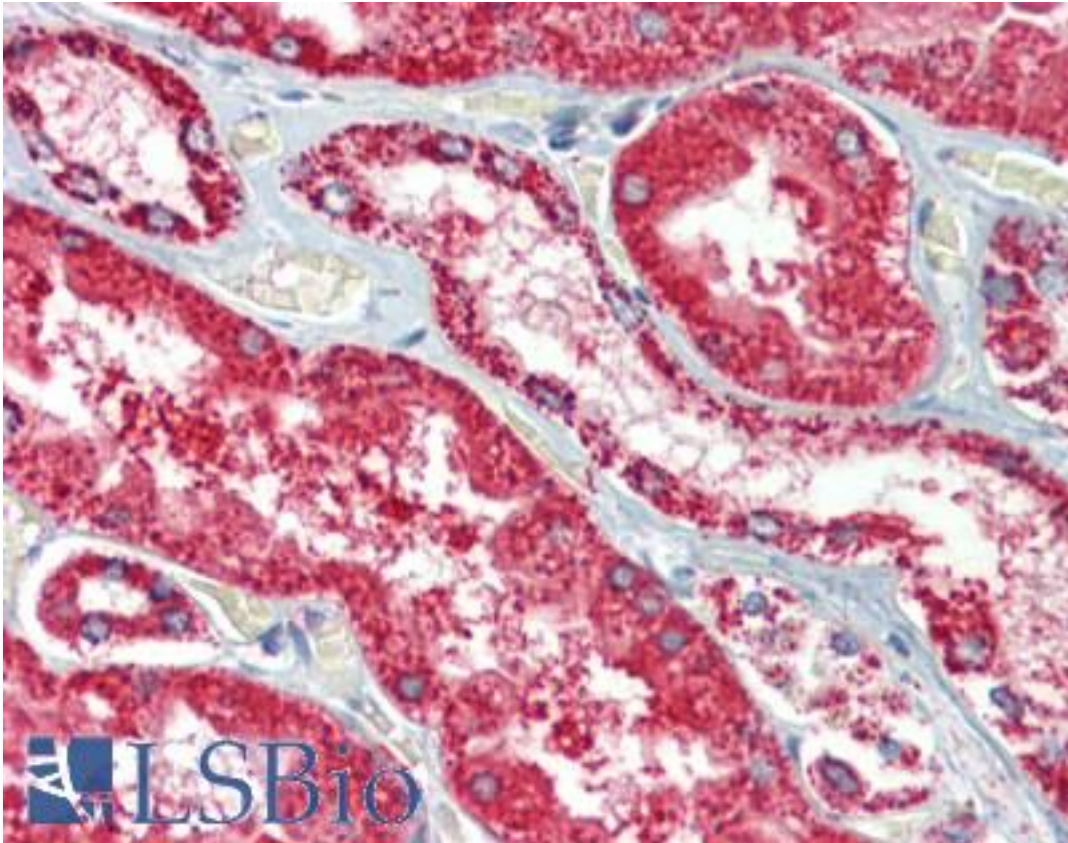


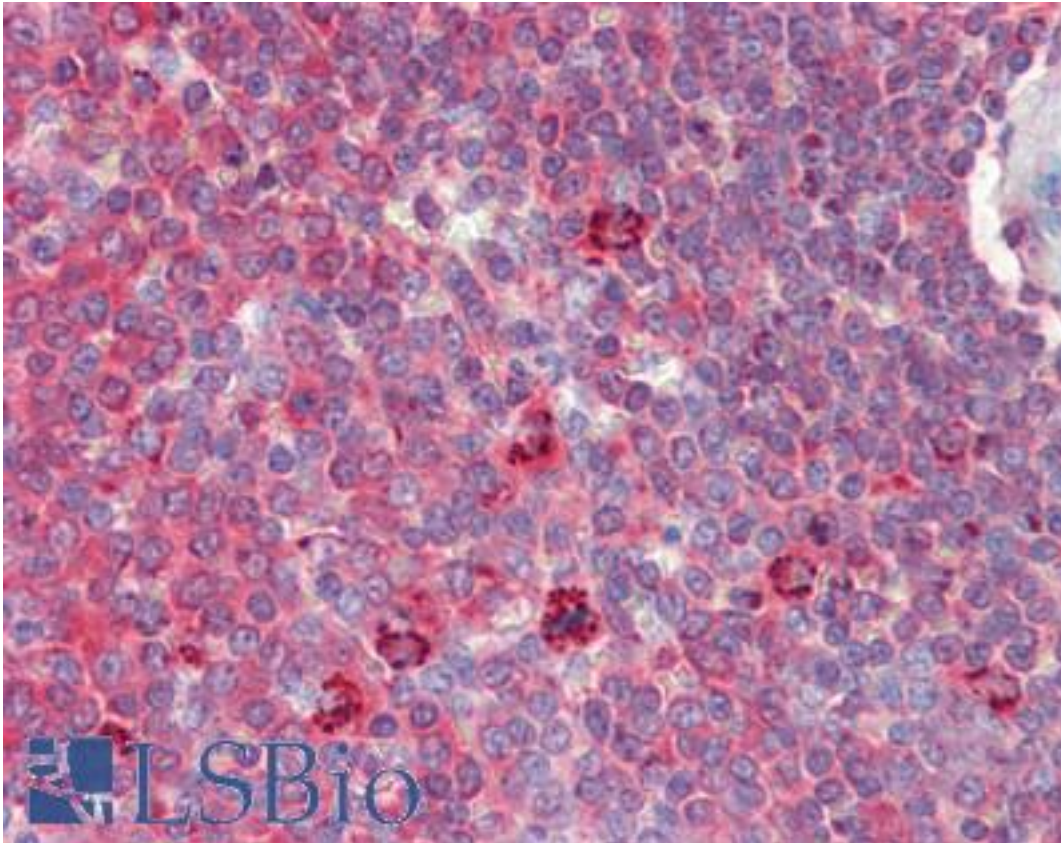
HSPD1 / HSP60 Mouse anti-Human Monoclonal (Mab-11-13) Antibody - LS-B3702 - LSBio	
CatalogID:	LS-B3702
Validation:	This antibody replaces catalog number LS-C104860. It has been validated for use in the following assays: IHC-P.
Target:	heat shock 60kDa protein 1 (chaperonin) (HSPD1)
Synonyms:	HSPD1 Antibody, 60 kDa chaperonin Antibody, CPN60 Antibody, Heat shock protein 65 Antibody, Heat shock protein 60 Antibody, HSP-60 Antibody, HSP60 Antibody, HuCHA60 Antibody, HLD4 Antibody, HSP65 Antibody, p60 lymphocyte protein Antibody, SPG13 Antibody, Chaperonin 60 Antibody, GROEL Antibody
Host	HSPD1 antibody was produced in Mouse
Clonality:	Monoclonal
Isotype:	IgG2a
Clone Name:	Mab-11-13
Immunogen Species:	HSPD1 / HSP60 antibody was raised against Human
Antigen Type:	Recombinant protein
Immunogen:	HSPD1 / HSP60 antibody was raised against recombinant human Hsp60 protein.
Reactivity:	Human, Monkey, Mouse, Rat, Bovine, Dog, Guinea pig, Hamster, Pig, Rabbit, Fish, Drosophila, Mosquito
Purification:	Protein G purified
Presentation:	PBS, pH 7.2, 0.09% azide, 50% glycerol
Recommended Storage:	Store at -20°C.
Usage Summary:	Immunohistochemistry: LS-B3702 was validated for use in immunohistochemistry on a panel of 21 formalin-fixed, paraffin-embedded (FFPE) human tissues after heat induced antigen retrieval in pH 6.0 citrate buffer. After incubation with the primary antibody, slides were incubated with biotinylated secondary antibody, followed by alkaline phosphatase-streptavidin and chromogen. The stained slides were evaluated by a pathologist to confirm staining specificity. The optimal working concentration for LS-B3702 was determined to be 10 ug/ml
Uses:	IHC - Paraffin (5 - 10 µg/ml), Western blot (Optimal dilution to be determined by the researcher)
Size:	50 µg

Immunohistochemistry Image:



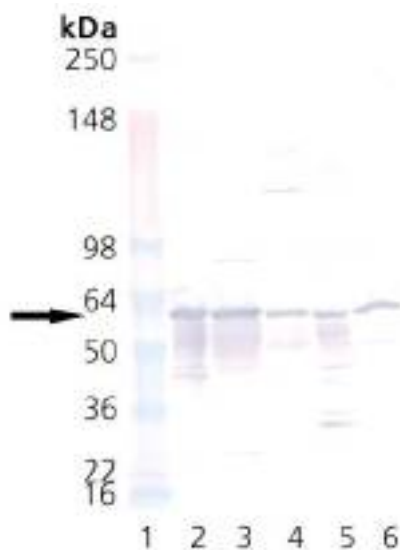
Anti-HSPD1 antibody IHC of human kidney. Immunohistochemistry of formalin-fixed, paraffin-embedded tissue after heat-induced antigen retrieval. Antibody LS-B3702 concentration 5 ug/ml.

Immunohistochemistry Image:



Anti-HSPD1 antibody IHC of human spleen. Immunohistochemistry of formalin-fixed, paraffin-embedded tissue after heat-induced antigen retrieval. Antibody LS-B3702 concentration 5 ug/ml.

Western Blot Image:



Lane 1: MWM, Lane 2: NSP-540, Lane 3: HeLa (heat shocked), Lane 4: PC-12 (heat shocked), Lane 5: 3T3 (heat shocked), Lane 6: GPC-16 (heat shocked).

Requested From:

Japan

Laboratory Reagent For In Vitro Research Use Only

Not for resale without prior written consent from LifeSpan BioSciences, Inc.

Created on 9/23/2014

© 2014 LifeSpan BioSciences