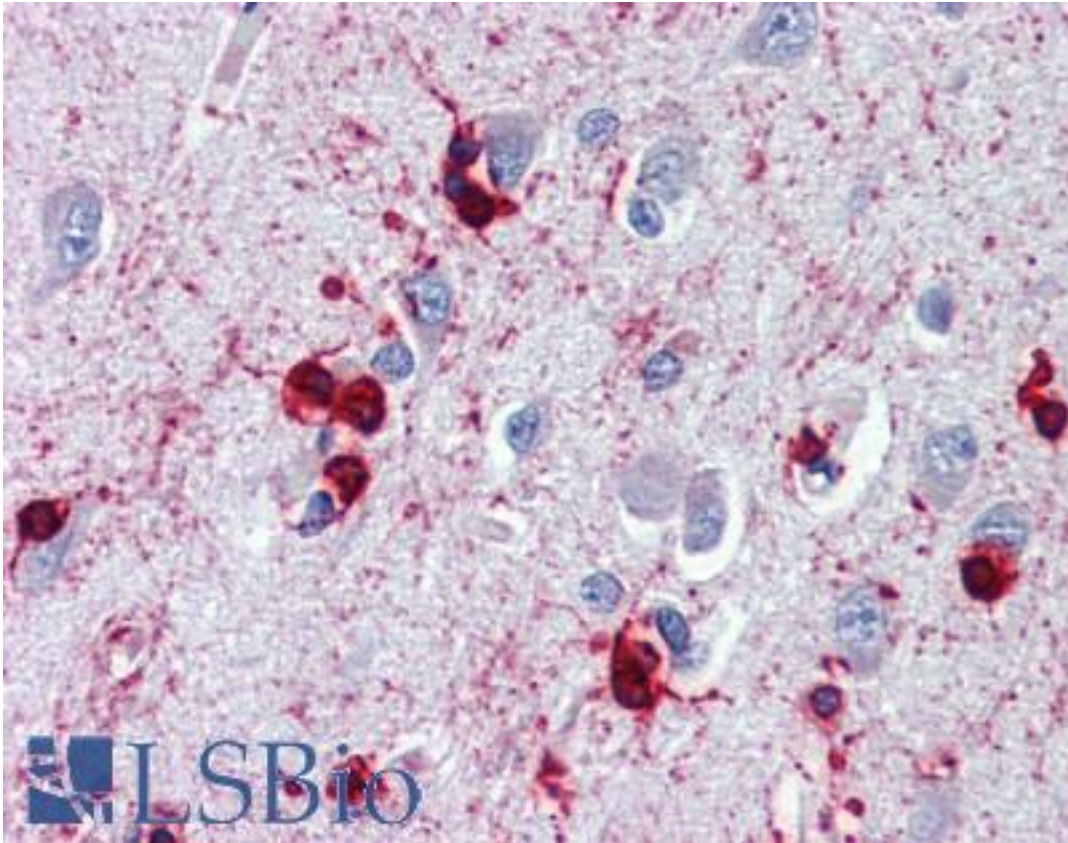


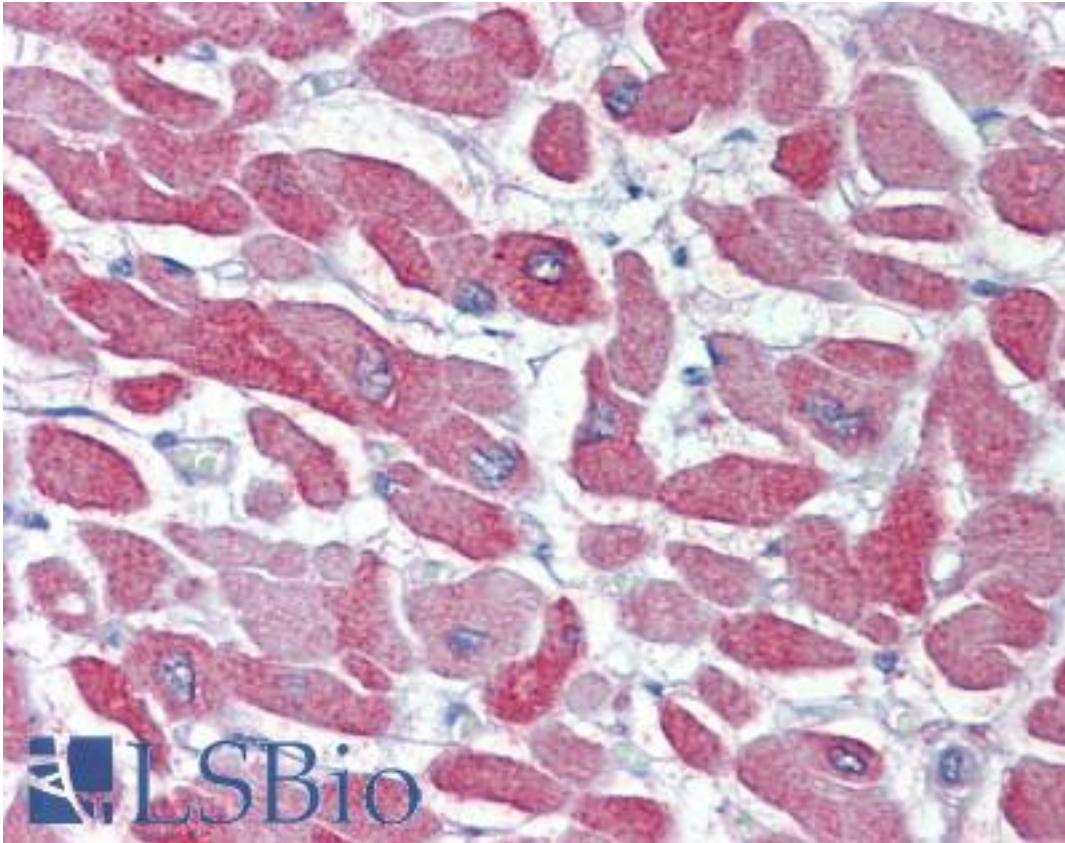
CRYAB / Alpha B Crystallin Rabbit anti-Human Polyclonal Antibody - LS-B3696 - LSBio	
<b>CatalogID:</b>	LS-B3696
<b>Validation:</b>	This antibody replaces catalog number LS-C104864. It has been validated for use in the following assays: IHC-P.
<b>Target:</b>	crystallin, alpha B (CRYAB)
<b>Synonyms:</b>	CRYAB Antibody, Alpha-crystallin B chain Antibody, CRYA2 Antibody, Crystallin, alpha B Antibody, CTPP2 Antibody, Heat shock protein beta-5 Antibody, HSPB5 Antibody, Alpha B Crystallin Antibody, Alpha(B)-crystallin Antibody, Rosenthal fiber component Antibody, Heat-shock 20 kD like-protein Antibody
<b>Host</b>	CRYAB antibody was produced in Rabbit
<b>Clonality:</b>	Polyclonal
<b>Immunogen Species:</b>	CRYAB / Alpha B Crystallin antibody was raised against Human
<b>Antigen Type:</b>	Synthetic peptide - KLH conjugated
<b>Immunogen:</b>	CRYAB / Alpha B Crystallin antibody was raised against synthetic peptide derived from sequence near the carboxy-terminus of human alphaB-Crystallin, conjugated to KLH; sequence identical to rat, rabbit, and bovine.
<b>Reactivity:</b>	Human, Mouse, Rat, Bovine, Pig
<b>Purification:</b>	Protein A purified
<b>Presentation:</b>	PBS, 0.09% azide, 50% glycerol
<b>Recommended Storage:</b>	Long term: -20°C; Short term: +4°C; Avoid freeze-thaw cycles.
<b>Usage Summary:</b>	Immunohistochemistry: LS-B3696 was validated for use in immunohistochemistry on a panel of 21 formalin-fixed, paraffin-embedded (FFPE) human tissues after heat induced antigen retrieval in pH 6.0 citrate buffer. After incubation with the primary antibody, slides were incubated with biotinylated secondary antibody, followed by alkaline phosphatase-streptavidin and chromogen. The stained slides were evaluated by a pathologist to confirm staining specificity. The optimal working concentration for LS-B3696 was determined to be 10 ug/ml
<b>Uses:</b>	IHC - Paraffin (10 µg/ml), Western blot (1:1000) (Optimal dilution to be determined by the researcher)
<b>Size:</b>	50 µg
<b>Concentration:</b>	1 mg/ml

**Immunohistochemistry Image:**



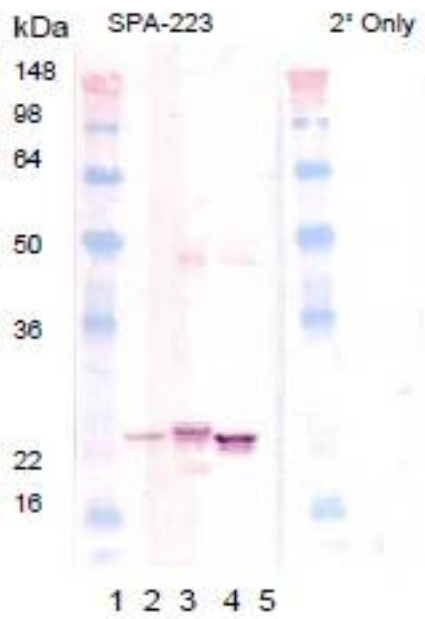
Anti-CRYAB / Alpha B Crystallin antibody IHC of human brain, cortex. Immunohistochemistry of formalin-fixed, paraffin-embedded tissue after heat-induced antigen retrieval. Antibody LS-B3696 concentration 10 ug/ml.

**Immunohistochemistry Image:**



Anti-CRYAB / Alpha B Crystallin antibody IHC of human heart. Immunohistochemistry of formalin-fixed, paraffin-embedded tissue after heat-induced antigen retrieval. Antibody LS-B3696 concentration 10 ug/ml.

**Western Blot Image:**



Western blot of SPA-223: Lane 1: MWM, Lane 2: SPP-225 Lane3: SPP-226, Lane4: SPP-227, Lane 5: SPP-235.

**Requested From:**

Japan

Laboratory Reagent For In Vitro Research Use Only

Not for resale without prior written consent from LifeSpan BioSciences, Inc.

Created on 9/23/2014

© 2014 LifeSpan BioSciences