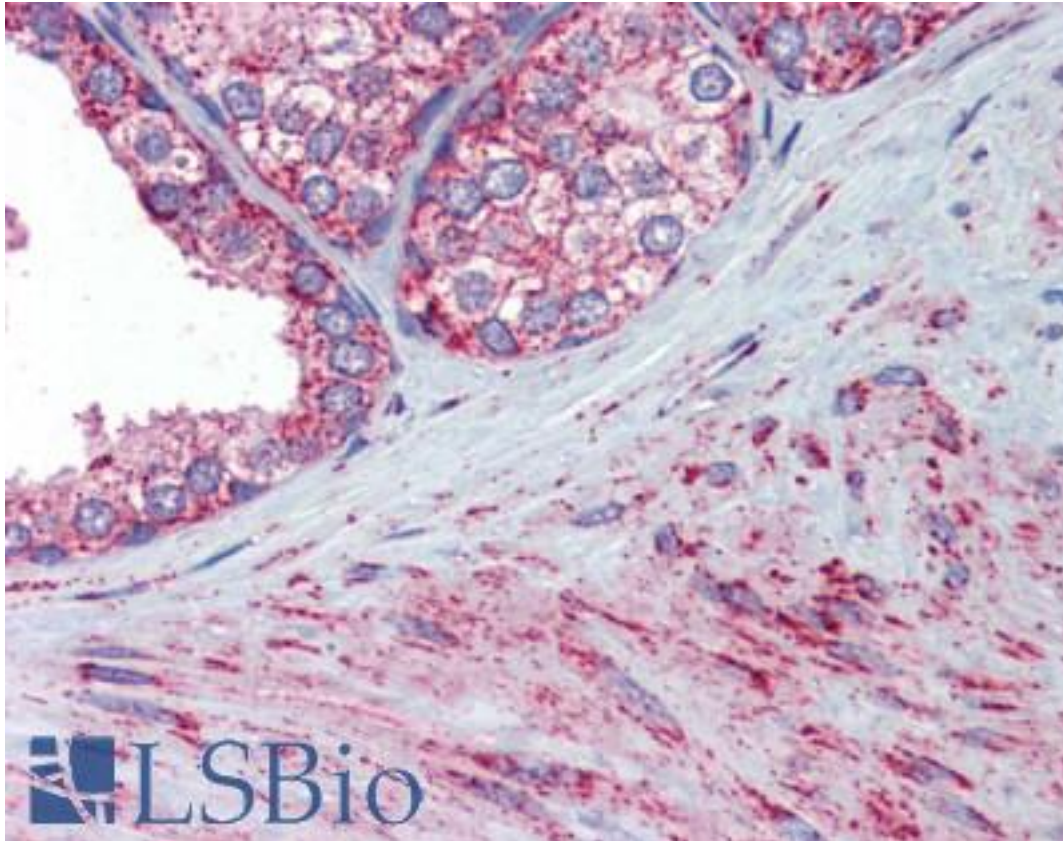


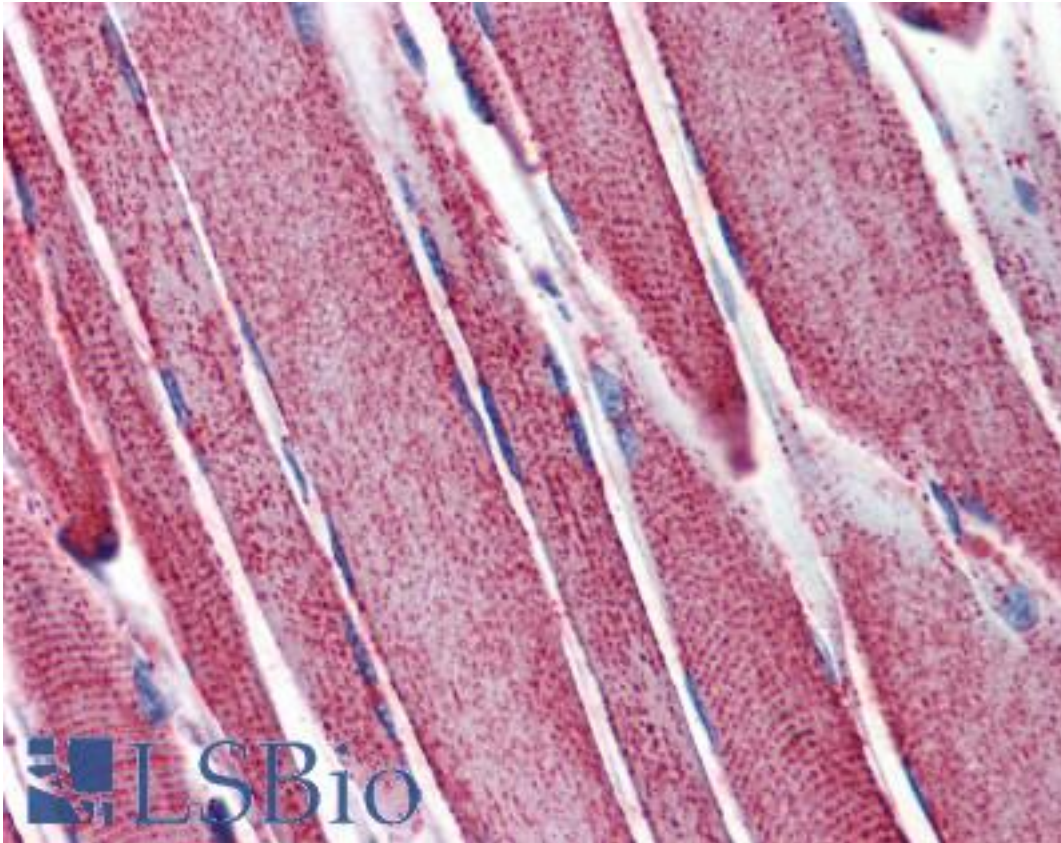
MNSOD / SOD2 Rabbit anti-Rat Polyclonal Antibody - LS-B3694 - LSBio	
CatalogID:	LS-B3694
Validation:	This antibody replaces catalog number LS-C104861. It has been validated for use in the following assays: IHC-P.
Target:	superoxide dismutase 2, mitochondrial (SOD2)
Synonyms:	SOD2 Antibody, IPOB Antibody, MVCD6 Antibody, Indophenoloxidase B Antibody, Mn superoxide dismutase Antibody, MNSOD Antibody, Manganosuperoxide dismutase Antibody
Host	SOD2 antibody was produced in Rabbit
Clonality:	Polyclonal
Immunogen Species:	MNSOD / SOD2 antibody was raised against Rat
Immunogen:	MNSOD / SOD2 antibody was raised against native rat Mn SOD protein.
Reactivity:	Rat, Human, Monkey, Mouse, Bovine, Dog, Guinea pig, Hamster, Pig, Rabbit, Sheep, Xenopus, Drosophila
Purification:	Immunoaffinity purified
Presentation:	Sodium phosphate buffer, pH 7.0, 15 mg/mL BSA, 0.09% azide, 50% glycerol
Recommended Storage:	Long term: -20°C; Short term: +4°C; Avoid freeze-thaw cycles.
Usage Summary:	Immunohistochemistry: LS-B3694 was validated for use in immunohistochemistry on a panel of 21 formalin-fixed, paraffin-embedded (FFPE) human tissues after heat induced antigen retrieval in pH 6.0 citrate buffer. After incubation with the primary antibody, slides were incubated with biotinylated secondary antibody, followed by alkaline phosphatase-streptavidin and chromogen. The stained slides were evaluated by a pathologist to confirm staining specificity. The optimal working concentration for LS-B3694 was determined to be 10 ug/ml
Uses:	IHC - Paraffin (10 µg/ml), Western blot (1:1000), Immunoprecipitation (1:100), Flow Cytometry (1:1000) (Optimal dilution to be determined by the researcher)
Size:	50 µg
Concentration:	1 mg/ml

Immunohistochemistry Image:



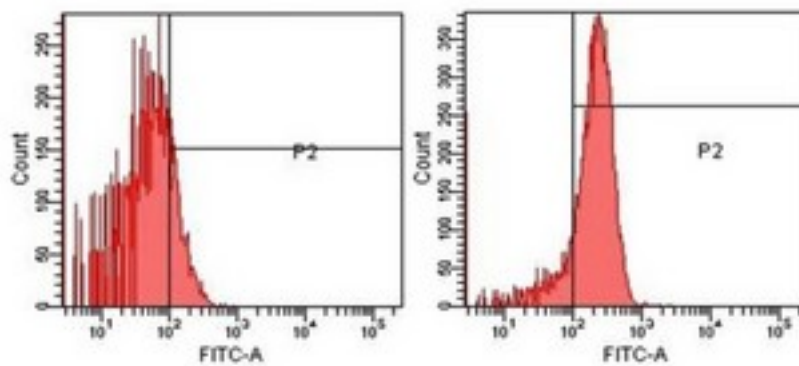
Anti-SOD2 / MNSOD antibody IHC of human prostate. Immunohistochemistry of formalin-fixed, paraffin-embedded tissue after heat-induced antigen retrieval. Antibody LS-B3694 concentration 10 ug/ml.

Immunohistochemistry Image:



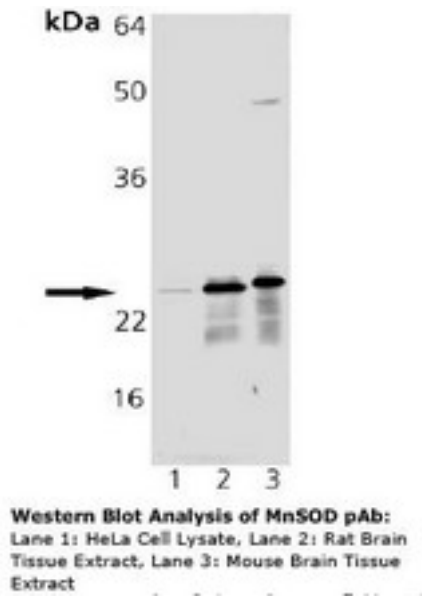
Anti-SOD2 / MNSOD antibody IHC of human skeletal muscle. Immunohistochemistry of formalin-fixed, paraffin-embedded tissue after heat-induced antigen retrieval. Antibody LS-B3694 concentration 10 ug/ml.

Flow Cytometry Image:



Flow cytometry analysis of U251 cells using Mn SOD polyclonal antibody (right) and control rabbit IgG (left)

Western Blot Image:



Requested From:

Japan

Laboratory Reagent For In Vitro Research Use Only

Not for resale without prior written consent from LifeSpan BioSciences, Inc.

Created on 9/23/2014

© 2014 LifeSpan BioSciences