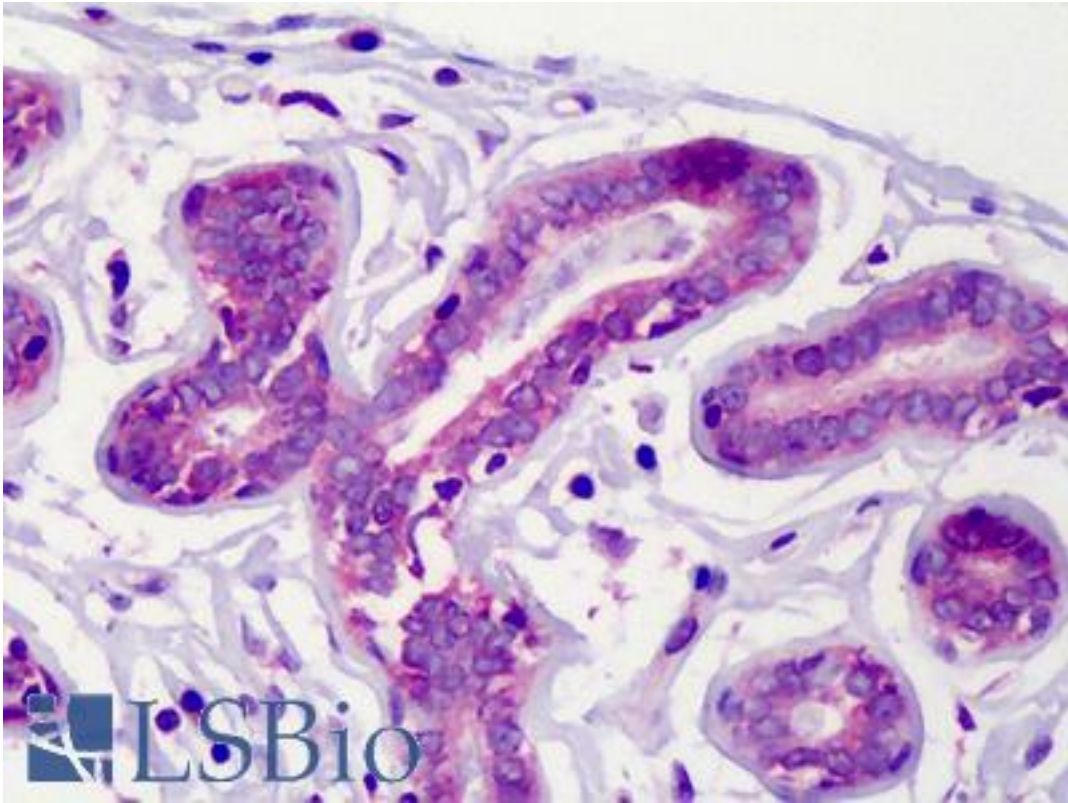


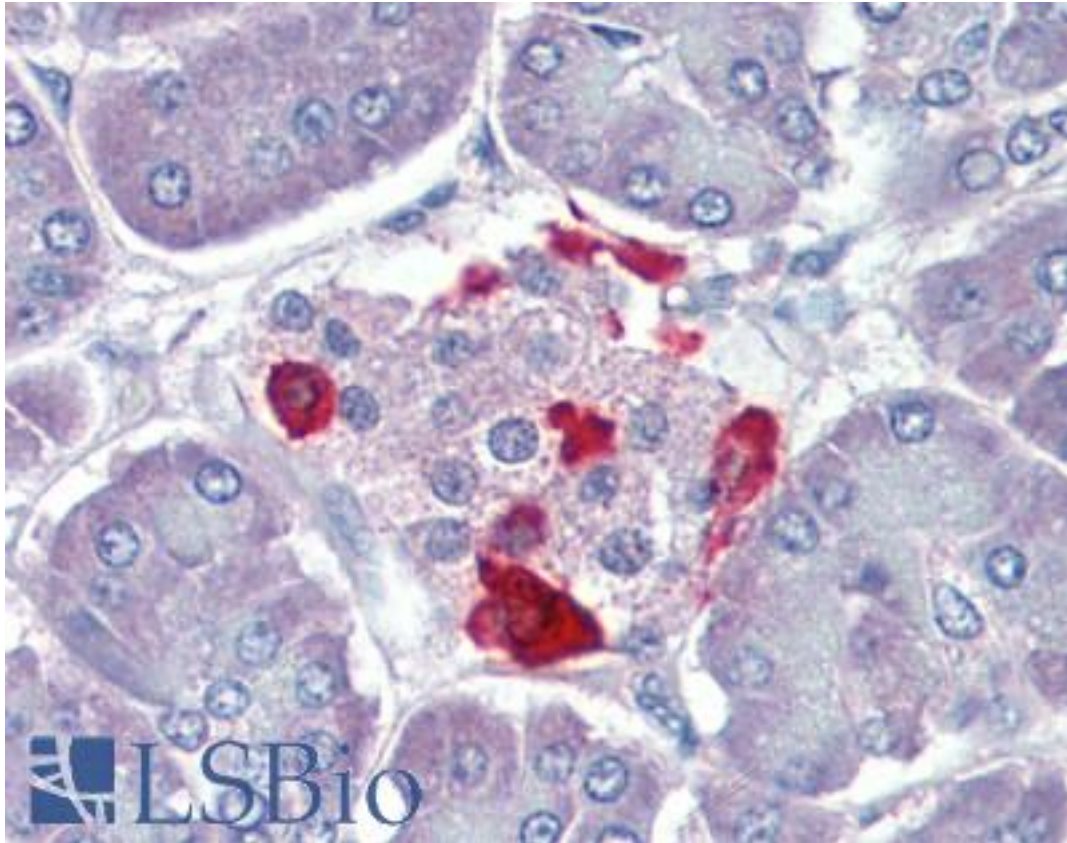
GSK3B / GSK3 Beta Rabbit anti-Rat Polyclonal Antibody - LS-B3691 - LSBio	
CatalogID:	LS-B3691
Validation:	This antibody replaces catalog number LS-C104857. It has been validated for use in the following assays: IHC-P.
Target:	glycogen synthase kinase 3 beta (GSK3B)
Synonyms:	GSK3B Antibody, GSK-3 beta Antibody, GSK3 beta Antibody, GSK3beta Antibody, GSK3beta isoform Antibody, TPKI Antibody, GSK 3beta Antibody, Tau protein kinase I Antibody, ZGSK-3beta Antibody
Family / Subfamily:	Protein Kinase / GSK-3
Host	GSK3B antibody was produced in Rabbit
Clonality:	Polyclonal
Immunogen Species:	GSK3B / GSK3 Beta antibody was raised against Rat
Antigen Type:	Synthetic peptide - KLH conjugated
Immunogen:	GSK3B / GSK3 Beta antibody was raised against synthetic peptide derived from the sequence of rat GSK3 beta, conjugated to KLH; sequence identical to human.
Reactivity:	Rat, Human, Mouse, Bovine
Purification:	Protein A purified
Presentation:	PBS, pH 7.2, 50% glycerol, 0.09% azide
Recommended Storage:	Store at -20°C.
Usage Summary:	Immunohistochemistry: LS-B3691 was validated for use in immunohistochemistry on a panel of 21 formalin-fixed, paraffin-embedded (FFPE) human tissues after heat induced antigen retrieval in pH 6.0 citrate buffer. After incubation with the primary antibody, slides were incubated with biotinylated secondary antibody, followed by alkaline phosphatase-streptavidin and chromogen. The stained slides were evaluated by a pathologist to confirm staining specificity. The optimal working concentration for LS-B3691 was determined to be 10 ug/ml
Uses:	IHC - Paraffin (10 µg/ml), Immunofluorescence, Western blot (1:1000) (Optimal dilution to be determined by the researcher)
Size:	50 µg
Concentration:	1 mg/ml

Immunohistochemistry Image:



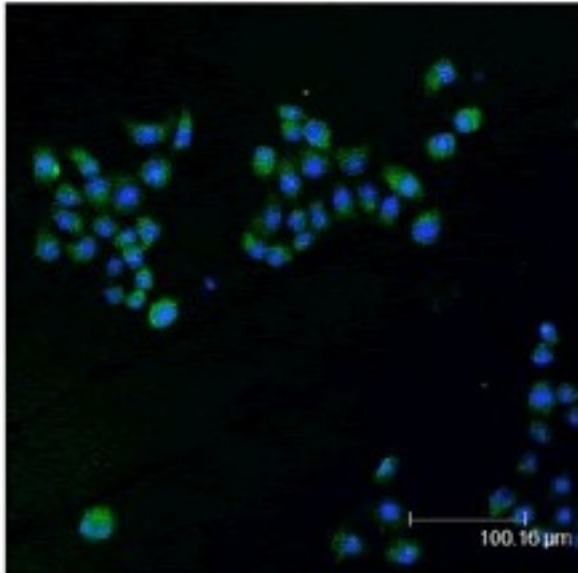
Anti-GSK3B / GSK3 Beta antibody IHC of human breast. Immunohistochemistry of formalin-fixed, paraffin-embedded tissue after heat-induced antigen retrieval. Antibody LS-B3691 concentration 10 ug/ml.

Immunohistochemistry Image:



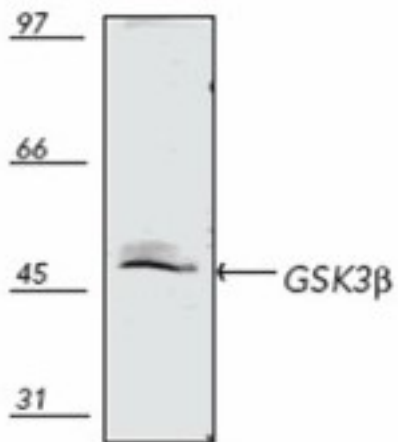
Anti-GSK3B / GSK3 Beta antibody IHC of human pancreas. Immunohistochemistry of formalin-fixed, paraffin-embedded tissue after heat-induced antigen retrieval. Antibody LS-B3691 concentration 10 ug/ml.

Immunofluorescence Image:



Confocal immunofluorescent staining of HeLa cells using GSK3β polyclonal antibody (1H8) (green); nuclei are stained in blue pseudocolor using DRAQ5

Western Blot Image:



Western blot analysis of human HeLa (heat shocked) cell lysate, probed with GSK3β polyclonal antibody (1H8)

Requested From:

Japan

Laboratory Reagent For In Vitro Research Use Only

Not for resale without prior written consent from LifeSpan BioSciences, Inc.

Created on 9/23/2014

© 2014 LifeSpan BioSciences