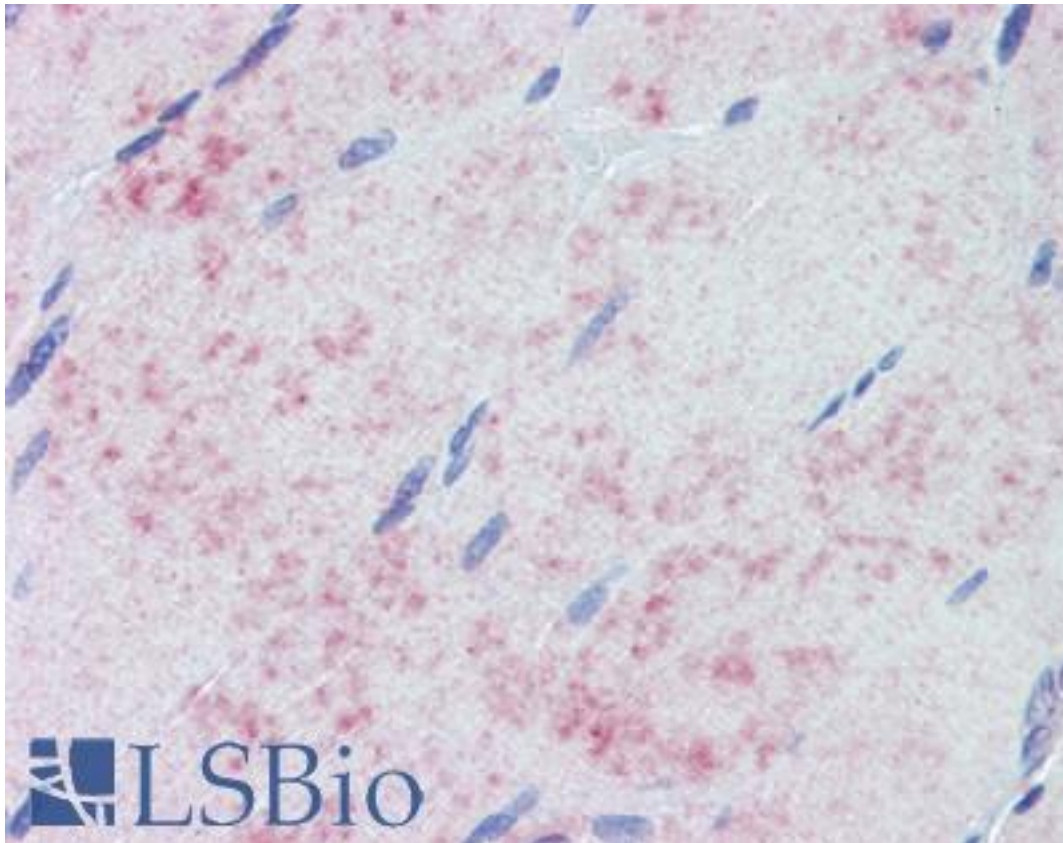


PDK1 Rabbit anti-Human Polyclonal Antibody - LS-B3690 - LSBio

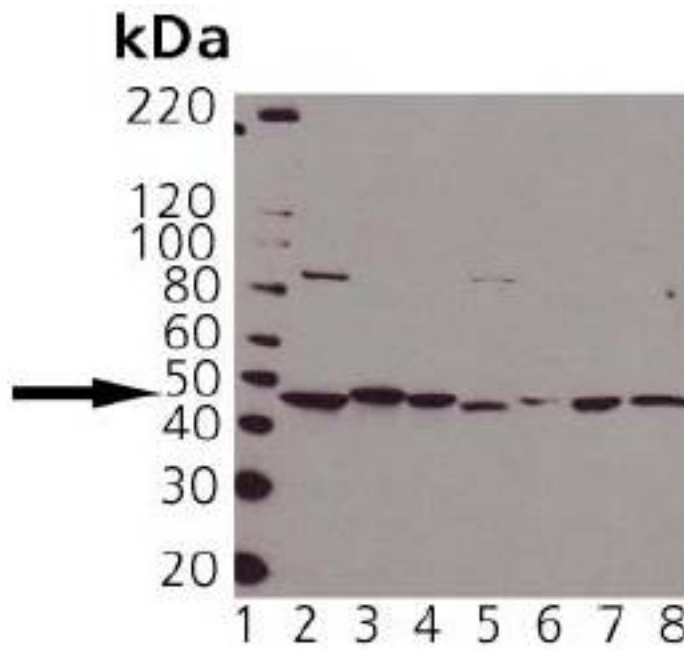
CatalogID:	LS-B3690
Validation:	This antibody replaces catalog number LS-C63182. It has been validated for use in the following assays: IHC-P.
Target:	pyruvate dehydrogenase kinase, isozyme 1 (PDK1)
Synonyms:	PDK1 Antibody, PDHK Antibody, PDH kinase 1 Antibody, PDHK1 Antibody
Family / Subfamily:	Protein Kinase / PDK/BCKDK
Host	PDK1 antibody was produced in Rabbit
Clonality:	Polyclonal
Immunogen Species:	PDK1 antibody was raised against Human
Antigen Type:	Synthetic peptide - KLH conjugated
Immunogen:	PDK1 antibody was raised against synthetic peptide derived from the sequence of human PDK1, conjugated to KLH.
Reactivity:	Human, Monkey, Mouse, Rat, Dog, Pig, Rabbit
Purification:	Protein A purified
Presentation:	PBS, 0.09% azide, 50% glycerol
Recommended Storage:	Store at -20°C.
Usage Summary:	Immunohistochemistry: LS-B3690 was validated for use in immunohistochemistry on a panel of 21 formalin-fixed, paraffin-embedded (FFPE) human tissues after heat induced antigen retrieval in pH 6.0 citrate buffer. After incubation with the primary antibody, slides were incubated with biotinylated secondary antibody, followed by alkaline phosphatase-streptavidin and chromogen. The stained slides were evaluated by a pathologist to confirm staining specificity. The optimal working concentration for LS-B3690 was determined to be 10 ug/ml
Uses:	IHC - Paraffin (10 µg/ml), Western blot (1:1000) (Optimal dilution to be determined by the researcher)
Size:	50 µg
Concentration:	1 mg/ml

Immunohistochemistry Image:



Anti-PDK1 antibody IHC of human skeletal muscle. human. Immunohistochemistry of formalin-fixed, paraffin-embedded tissue after heat-induced antigen retrieval. Antibody LS-B3690 concentration 10 ug/ml.

Western Blot Image:



Western blot of PDK1: Lane 1: MWM, Lane 2: HeLa, Lane 3: Rat Brain, Lane 4: Mouse Brain, Lane 5: Vero, Lane 6: ESK-4, Lane 7: RK-13, Lane 8: MDCK

Requested From:

Japan

Laboratory Reagent For In Vitro Research Use Only

Not for resale without prior written consent from LifeSpan BioSciences, Inc.

Created on 9/23/2014

© 2014 LifeSpan BioSciences