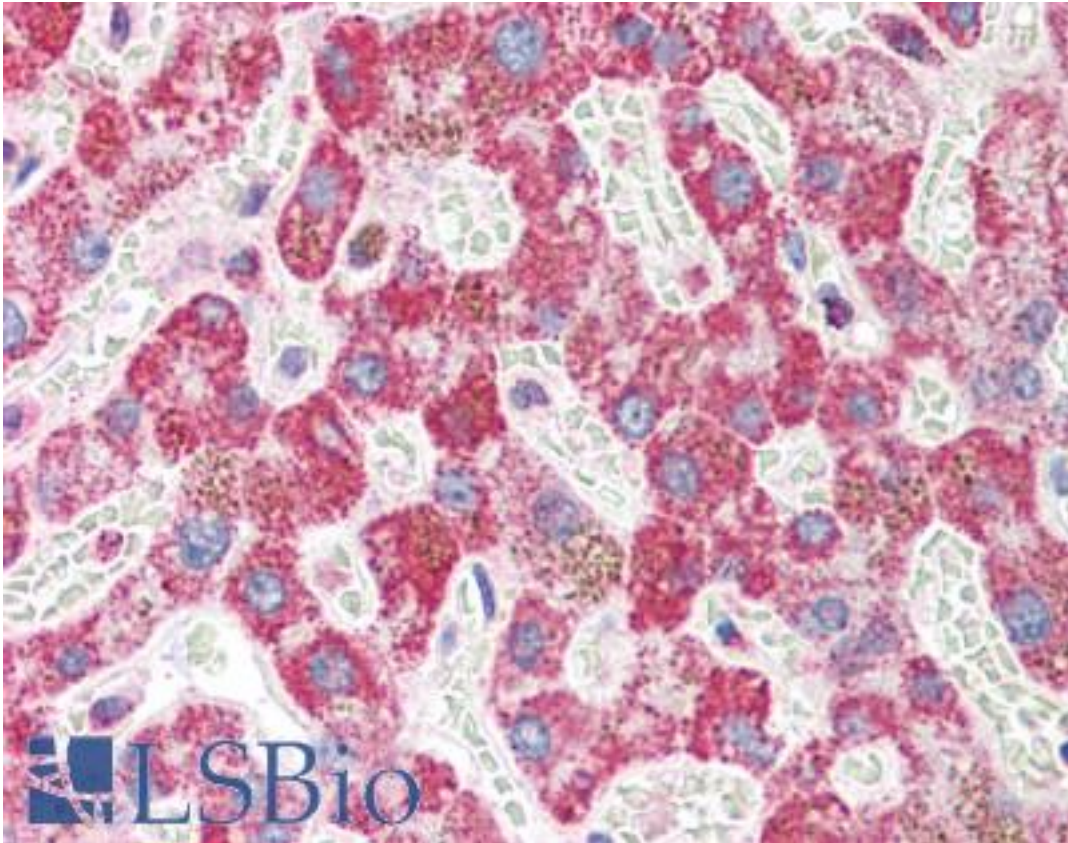


**EMI2 / FBXO43 Rabbit anti-Human Polyclonal (N-Terminus) Antibody - LS-B369 - LSBio**

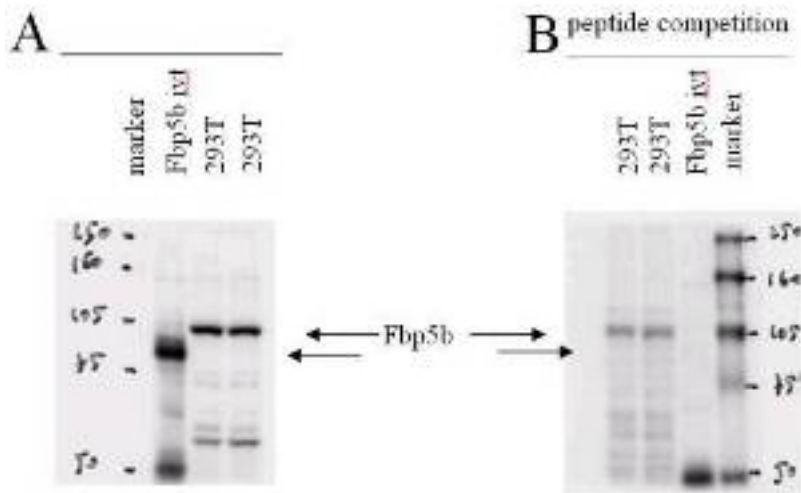
<b>CatalogID:</b>	LS-B369
<b>Validation:</b>	This antibody replaces catalog number LS-C19125. It has been validated for use in the following assays: IHC.
<b>Target:</b>	F-box protein 43 (FBXO43)
<b>Synonyms:</b>	FBXO43 Antibody, Early mitotic inhibitor 2 Antibody, EMI2 Antibody, Endogenous meiotic inhibitor 2 Antibody, F-box protein 43 Antibody, ERP1 Antibody, F-box only protein 43 Antibody, FBX43 Antibody
<b>Family / Subfamily:</b>	F-Box
<b>Host</b>	FBXO43 antibody was produced in Rabbit
<b>Clonality:</b>	Polyclonal
<b>Immunogen Species:</b>	EMI2 / FBXO43 antibody was raised against Human
<b>Antigen Type:</b>	Synthetic peptide
<b>Immunogen:</b>	EMI2 / FBXO43 antibody was raised against synthetic peptide from human FBXO43 / EMI2.
<b>Specificity:</b>	A region approximately 60 residues downstream of the amino terminal end of human Fbp5B protein.
<b>Epitope:</b>	N-Terminus
<b>Reactivity:</b>	Human, Chimpanzee, Mouse, Rat
<b>Purification:</b>	Immunoaffinity purified
<b>Presentation:</b>	0.02 M potassium phosphate, 0.15 M sodium chloride, pH 7.2, 0.01% sodium azide.
<b>Recommended Storage:</b>	+4°C or -20°C, Avoid repeated freezing and thawing.
<b>Usage Summary:</b>	Immunohistochemistry: LS-B369 was validated for use in immunohistochemistry on a panel of 21 formalin-fixed, paraffin-embedded (FFPE) human tissues after heat induced antigen retrieval in pH 6.0 citrate buffer. After incubation with the primary antibody, slides were incubated with biotinylated secondary antibody, followed by alkaline phosphatase-streptavidin and chromogen. The stained slides were evaluated by a pathologist to confirm staining specificity. The optimal working concentration for LS-B369 was determined to be 2.5 ug/ml.
<b>Uses:</b>	IHC - Paraffin (2.5 µg/ml), Immunofluorescence, Western blot (1:500 - 1:3000), ELISA (1:10000 - 1:50000) (Optimal dilution to be determined by the researcher)
<b>Size:</b>	50 µg
<b>Concentration:</b>	1 mg/ml

**Immunohistochemistry Image:**



Anti-FBXO43 / EMI2 antibody IHC of human liver. Immunohistochemistry of formalin-fixed, paraffin-embedded tissue after heat-induced antigen retrieval. Antibody LS-B369 concentration 5 ug/ml.

**Western Blot Image:**



Anti-Fbp5B Antibody - Western Blot. Western blot of affinity purified anti-Fbp5B antibody. Panels A and B show two identical membranes containing marker, in vitro translated Fbp5b (Fbp5b ivt), and a whole cell extract from 293T cells loaded in duplicate). Panel A shows antibody reactivity. Panel B shows antibody reactivity after first pre-incubating the antibody with the immunizing peptide. This pre-incubation greatly diminishes specific band recognition. Peptide inhibition completely removes the in vitro translated band and greatly reduces the endogenous band from 293T cells. When this experiment was repeated using a mock in vitro translation, no band was detected (data not shown). Personal Communication, Daniele Guardavaccaro, NYU Cancer Institute.

**Requested From:**

Japan

Laboratory Reagent For In Vitro Research Use Only

Not for resale without prior written consent from LifeSpan BioSciences, Inc.

Created on 9/23/2014

© 2014 LifeSpan BioSciences