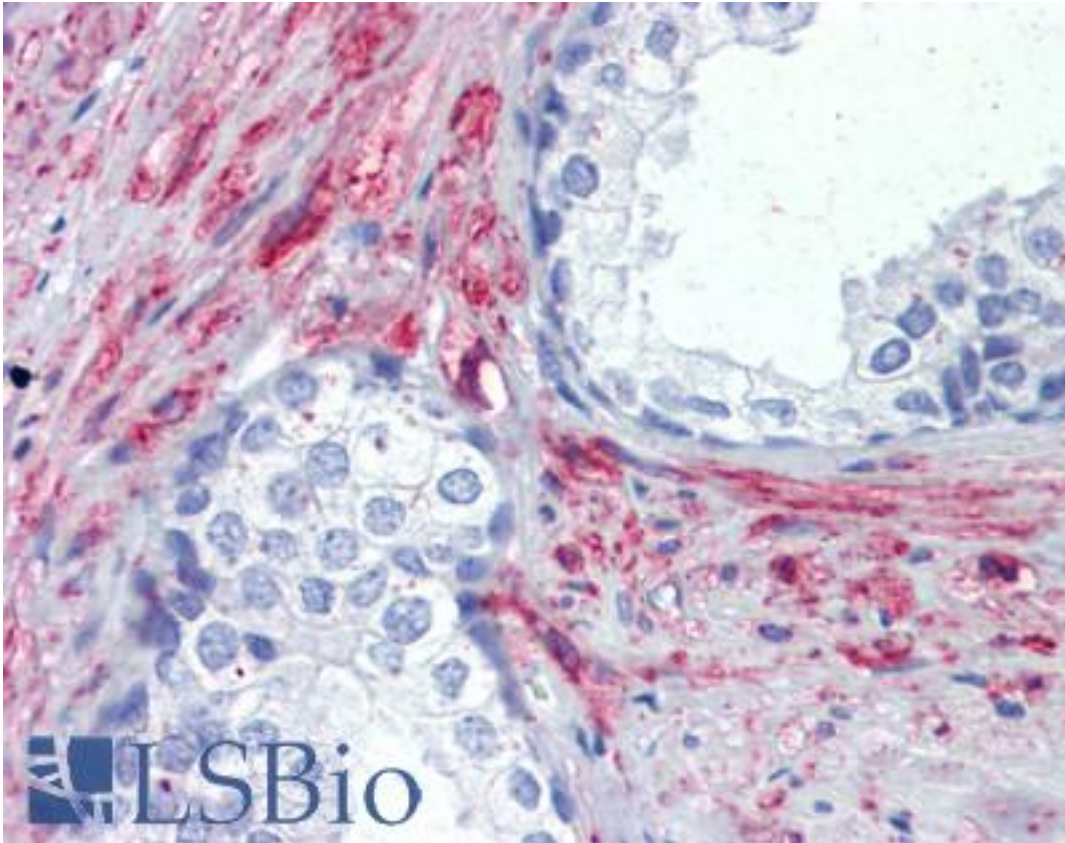


**PRKG Rabbit anti-Human Polyclonal Antibody - LS-B3689 - LSBio**

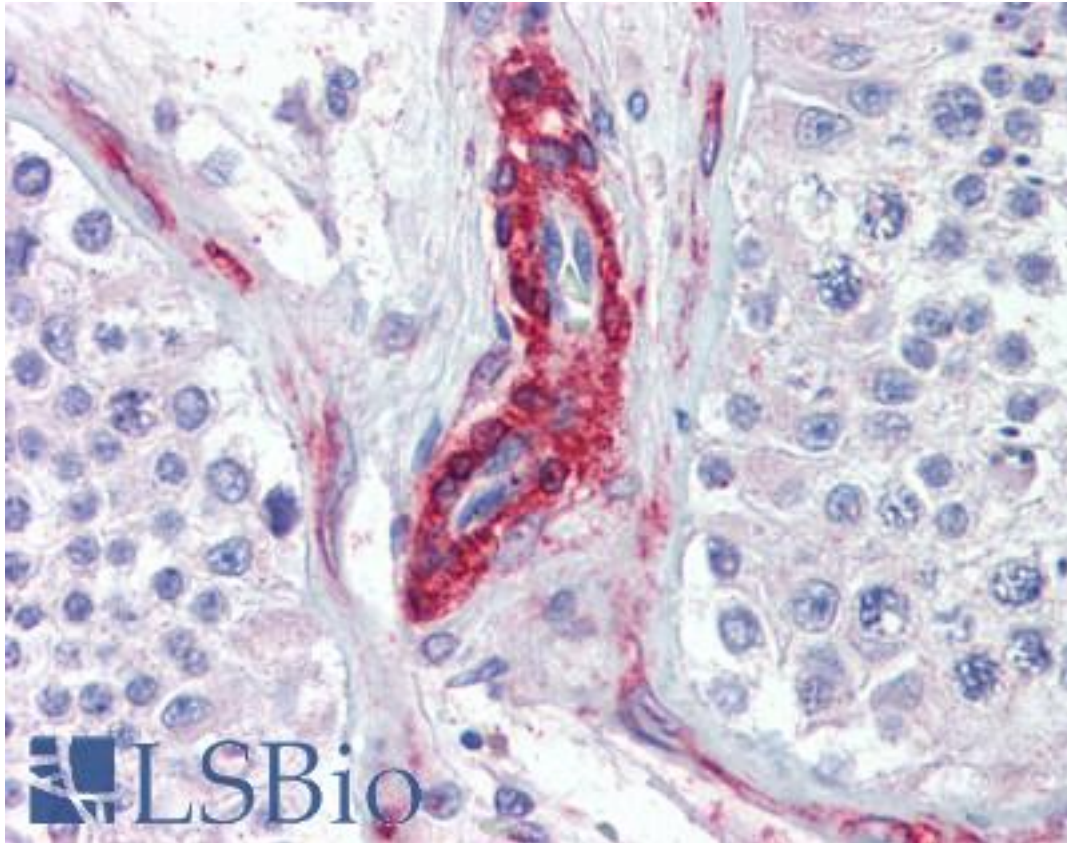
<b>CatalogID:</b>	LS-B3689
<b>Validation:</b>	This antibody replaces catalog number LS-C104862. It has been validated for use in the following assays: IHC-P.
<b>Target:</b>	PRKG / cGMP-Dependent Protein Kinase
<b>Host</b>	PRKG / cGMP-Dependent Protein Kinase antibody was produced in Rabbit
<b>Clonality:</b>	Polyclonal
<b>Immunogen Species:</b>	PRKG antibody was raised against Human
<b>Antigen Type:</b>	Synthetic peptide - KLH conjugated
<b>Immunogen:</b>	PRKG antibody was raised against synthetic peptide derived from the sequence of human PKG, coupled to KLH.
<b>Reactivity:</b>	Human, Mouse, Rat, Pig
<b>Purification:</b>	Protein A purified
<b>Presentation:</b>	PBS, pH 7.2, 0.09% azide, 50% glycerol
<b>Recommended Storage:</b>	Store at -20°C.
<b>Usage Summary:</b>	Immunohistochemistry: LS-B3689 was validated for use in immunohistochemistry on a panel of 21 formalin-fixed, paraffin-embedded (FFPE) human tissues after heat induced antigen retrieval in pH 6.0 citrate buffer. After incubation with the primary antibody, slides were incubated with biotinylated secondary antibody, followed by alkaline phosphatase-streptavidin and chromogen. The stained slides were evaluated by a pathologist to confirm staining specificity. The optimal working concentration for LS-B3689 was determined to be 10 ug/ml
<b>Uses:</b>	IHC - Paraffin (10 µg/ml), Western blot (Optimal dilution to be determined by the researcher)
<b>Size:</b>	50 µg
<b>Concentration:</b>	1 mg/ml

**Immunohistochemistry Image:**



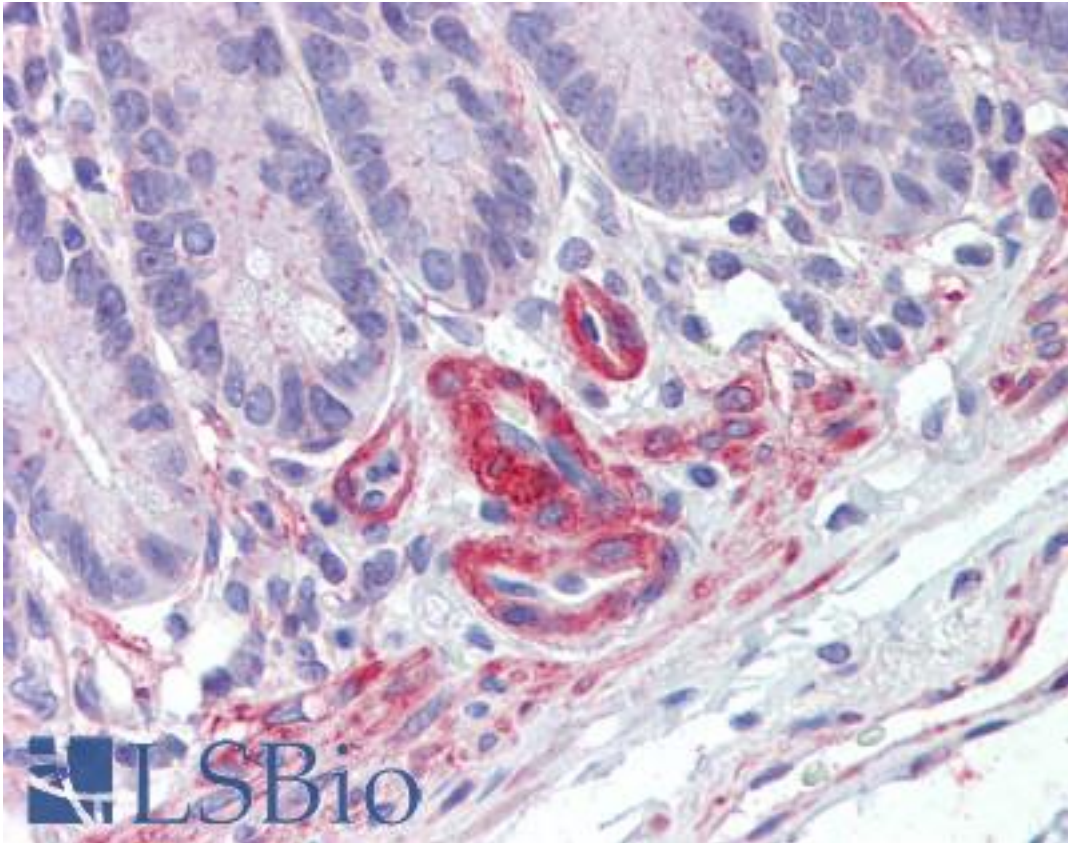
Anti-PRKG / cGMP-Dependent Protein Kinase antibody IHC of human prostate. Immunohistochemistry of formalin-fixed, paraffin-embedded tissue after heat-induced antigen retrieval. Antibody LS-B3689 concentration 10 ug/ml.

**Immunohistochemistry Image:**



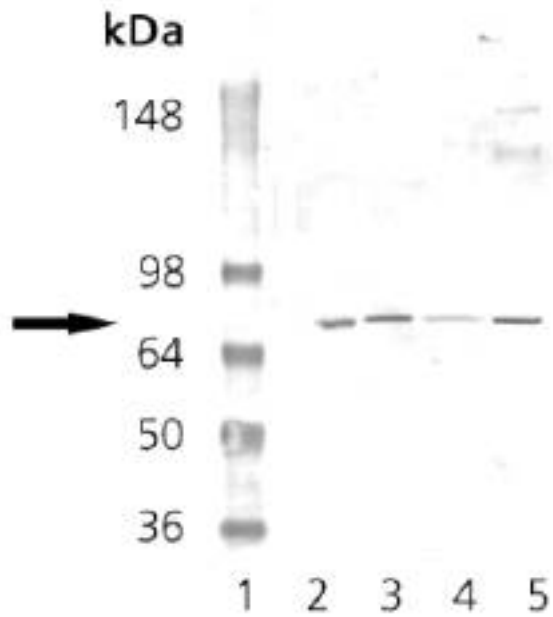
Anti-PRKG / cGMP-Dependent Protein Kinase antibody IHC of human testis.  
Immunohistochemistry of formalin-fixed, paraffin-embedded tissue after heat-induced antigen retrieval. Antibody LS-B3689 concentration 10 ug/ml.

**Immunohistochemistry Image:**



Anti-PRKG / cGMP-Dependent Protein Kinase antibody IHC of human small intestine. Immunohistochemistry of formalin-fixed, paraffin-embedded tissue after heat-induced antigen retrieval. Antibody LS-B3689 concentration 10 ug/ml.

**Western Blot Image:**



Western Blot Analysis: Lane 1: MWM, Lane 2: Mouse Brain Tissue Extract, Lane 3: Rat Brain Tissue Extract, Lane 4: EKS4 Cell Lysate; Lane 5: H S67 Cell Lysate probed with PKG polyclonal antibody.

**Requested From:**

Japan

Laboratory Reagent For In Vitro Research Use Only

Not for resale without prior written consent from LifeSpan BioSciences, Inc.

Created on 9/23/2014

© 2014 LifeSpan BioSciences