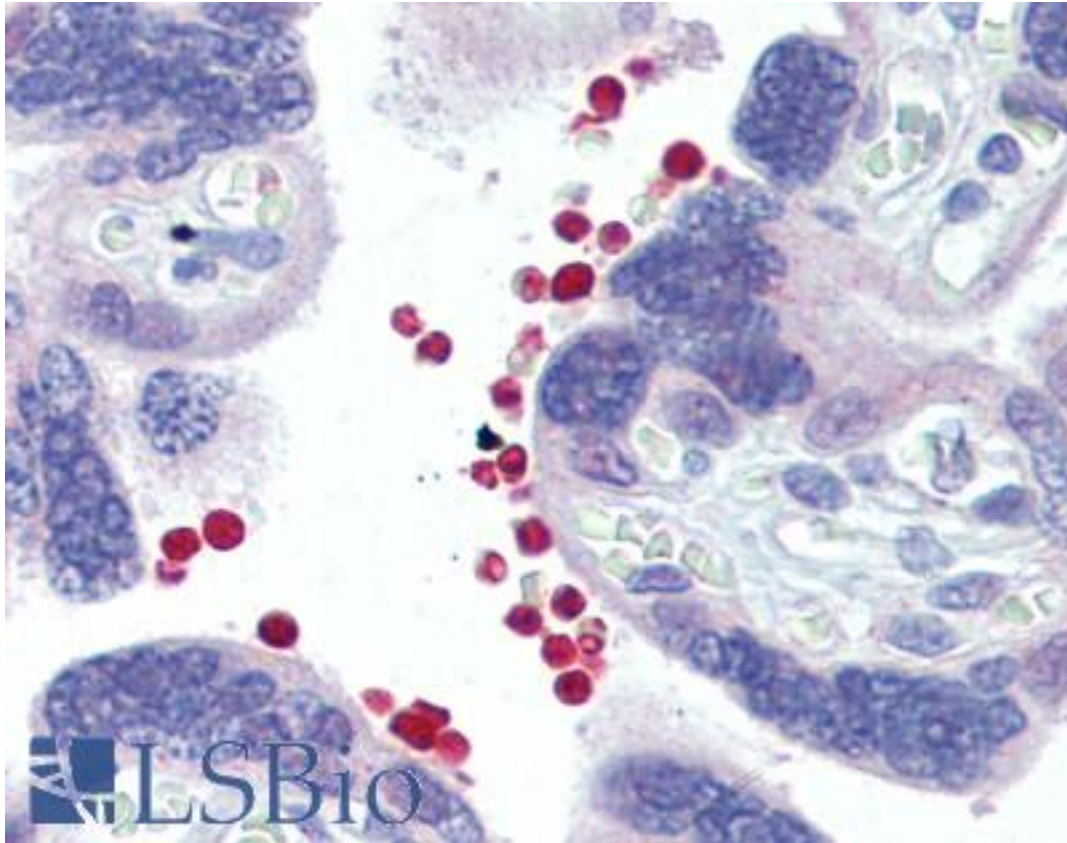


**AKT Rabbit anti-Human Polyclonal Antibody - LS-B3688 - LSBio**

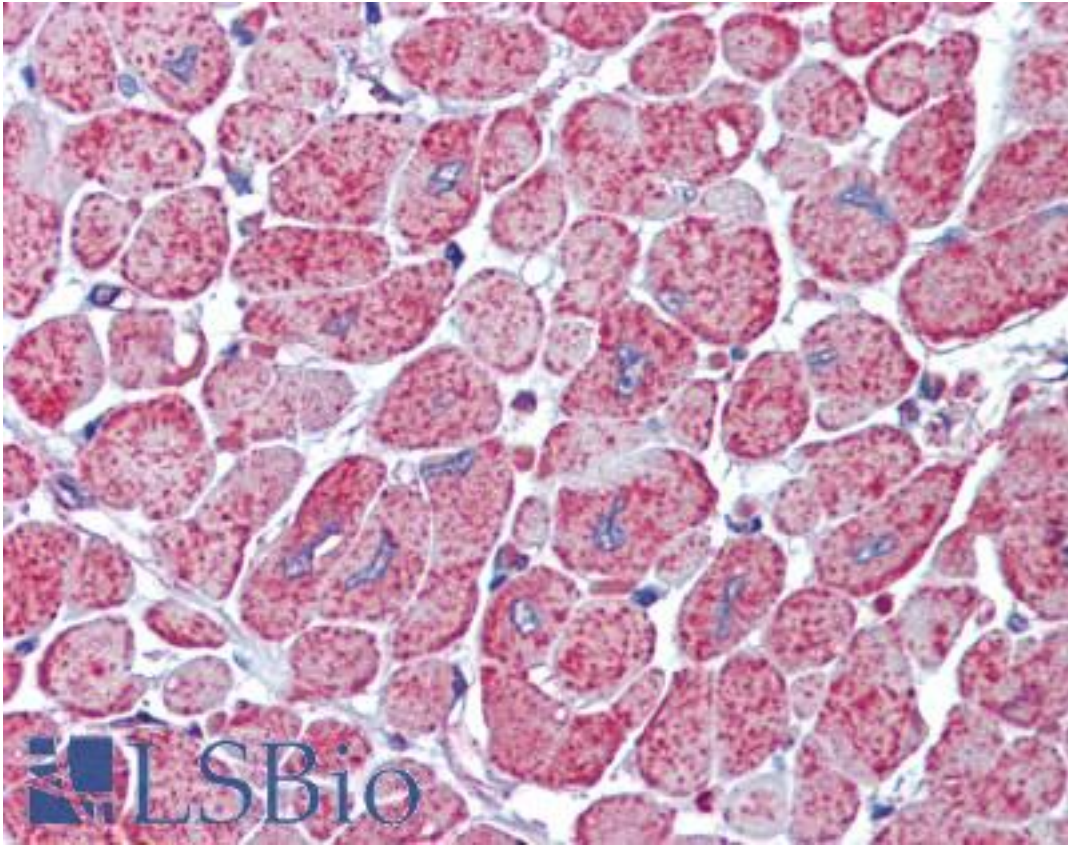
<b>CatalogID:</b>	LS-B3688
<b>Validation:</b>	This antibody replaces catalog number LS-C104847. It has been validated for use in the following assays: IHC-P.
<b>Target:</b>	AKT (AKT1/AKT2)
<b>Host</b>	AKT (AKT1/AKT2) antibody was produced in Rabbit
<b>Clonality:</b>	Polyclonal
<b>Immunogen Species:</b>	AKT antibody was raised against Human
<b>Antigen Type:</b>	Synthetic peptide - KLH conjugated
<b>Immunogen:</b>	AKT antibody was raised against synthetic peptide derived from the sequence of human Akt, conjugated to KLH; sequence identical with rat and bovine.
<b>Reactivity:</b>	Human, Mouse, Rat
<b>Purification:</b>	Protein A purified
<b>Presentation:</b>	PBS, 0.09% azide, 50% glycerol
<b>Recommended Storage:</b>	Store at -20°C.
<b>Usage Summary:</b>	Immunohistochemistry: LS-B3688 was validated for use in immunohistochemistry on a panel of 21 formalin-fixed, paraffin-embedded (FFPE) human tissues after heat induced antigen retrieval in pH 6.0 citrate buffer. After incubation with the primary antibody, slides were incubated with biotinylated secondary antibody, followed by alkaline phosphatase-streptavidin and chromogen. The stained slides were evaluated by a pathologist to confirm staining specificity. The optimal working concentration for LS-B3688 was determined to be 10 ug/ml
<b>Uses:</b>	IHC - Paraffin (10 µg/ml), Western blot (1:1000), Immunoprecipitation (Optimal dilution to be determined by the researcher)
<b>Size:</b>	50 µg
<b>Concentration:</b>	1 mg/ml

**Immunohistochemistry Image:**



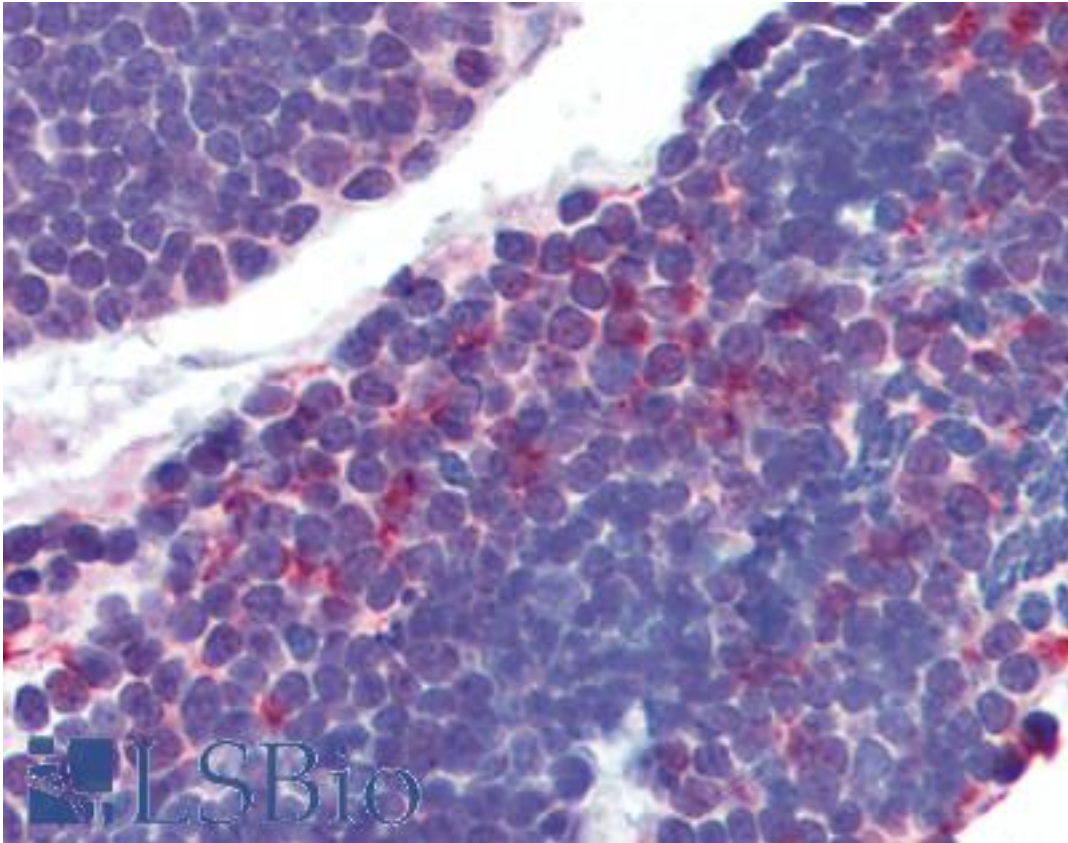
Anti-AKT antibody IHC of human placenta, red blood cells. Immunohistochemistry of formalin-fixed, paraffin-embedded tissue after heat-induced antigen retrieval. Antibody LS-B3688 concentration 10 ug/ml.

**Immunohistochemistry Image:**



Anti-AKT antibody IHC of human heart. Immunohistochemistry of formalin-fixed, paraffin-embedded tissue after heat-induced antigen retrieval. Antibody LS-B3688 concentration 10 ug/ml.

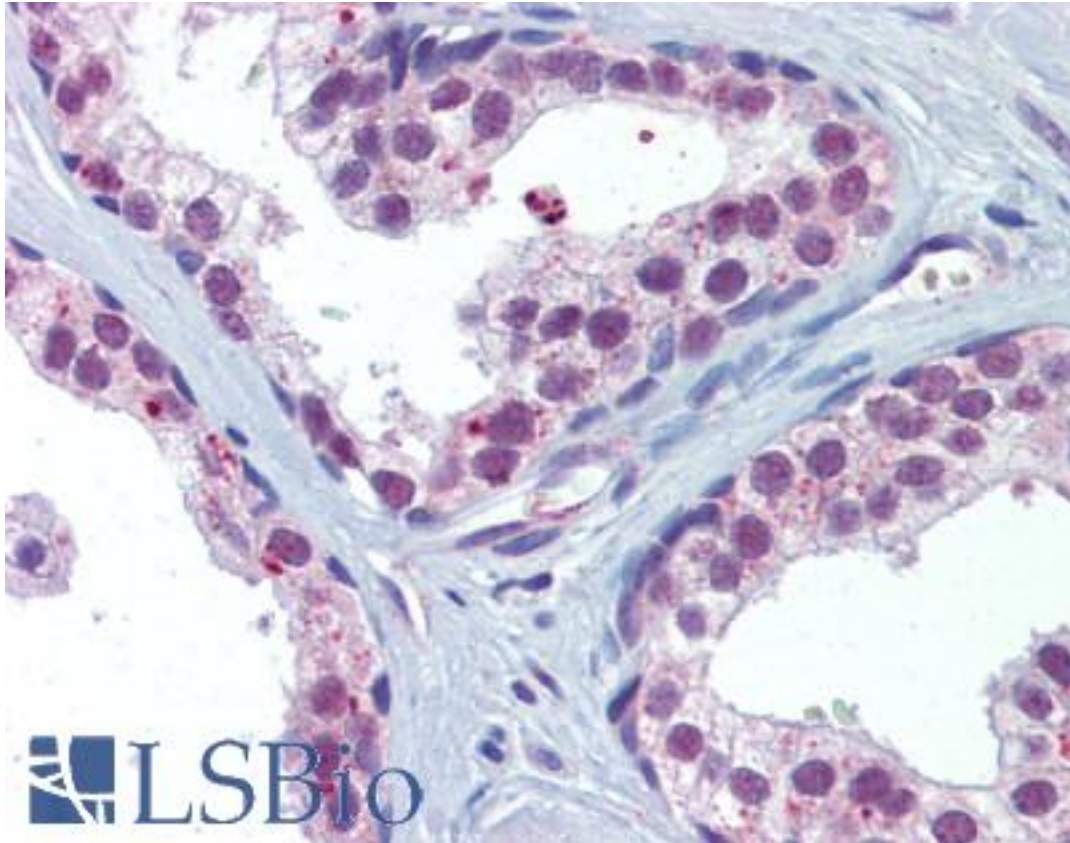
**Immunohistochemistry Image:**



Anti-AKT antibody IHC of human thymus. Immunohistochemistry of formalin-fixed, paraffin-embedded tissue after heat-induced antigen retrieval. Antibody LS-B3688 concentration 10 ug/ml.

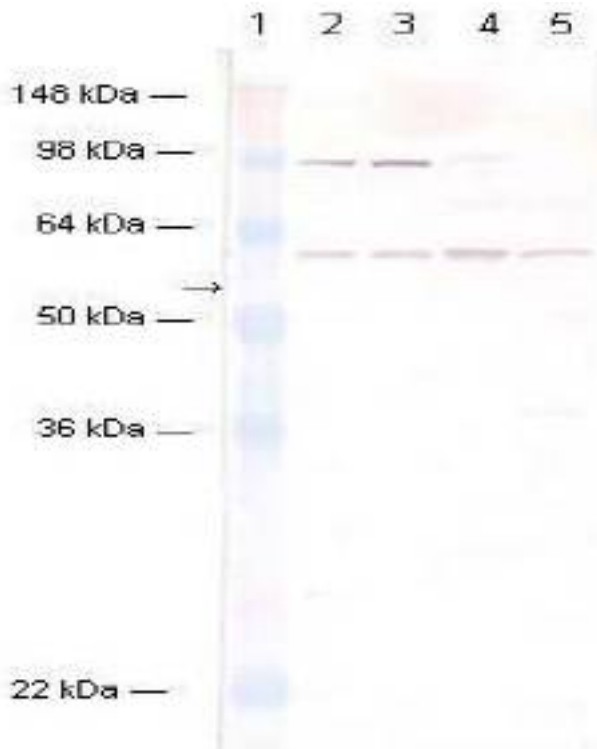


**Immunohistochemistry Image:**



Anti-AKT antibody IHC of human prostate. Immunohistochemistry of formalin-fixed, paraffin-embedded tissue after heat-induced antigen retrieval. Antibody LS-B3688 concentration 10 ug/ml.

**Western Blot Image:**



Western blot of Akt Polyclonal Antibody: Lane 1: MWM, Lane 2: Mouse Brain, Lane 3: Rat Brain, Lane 4: HeLa Cell Lysate, Lane 5: Hs-67 Cell Lysate

**Requested From:**

Japan

Laboratory Reagent For In Vitro Research Use Only

Not for resale without prior written consent from LifeSpan BioSciences, Inc.

Created on 9/23/2014

© 2014 LifeSpan BioSciences