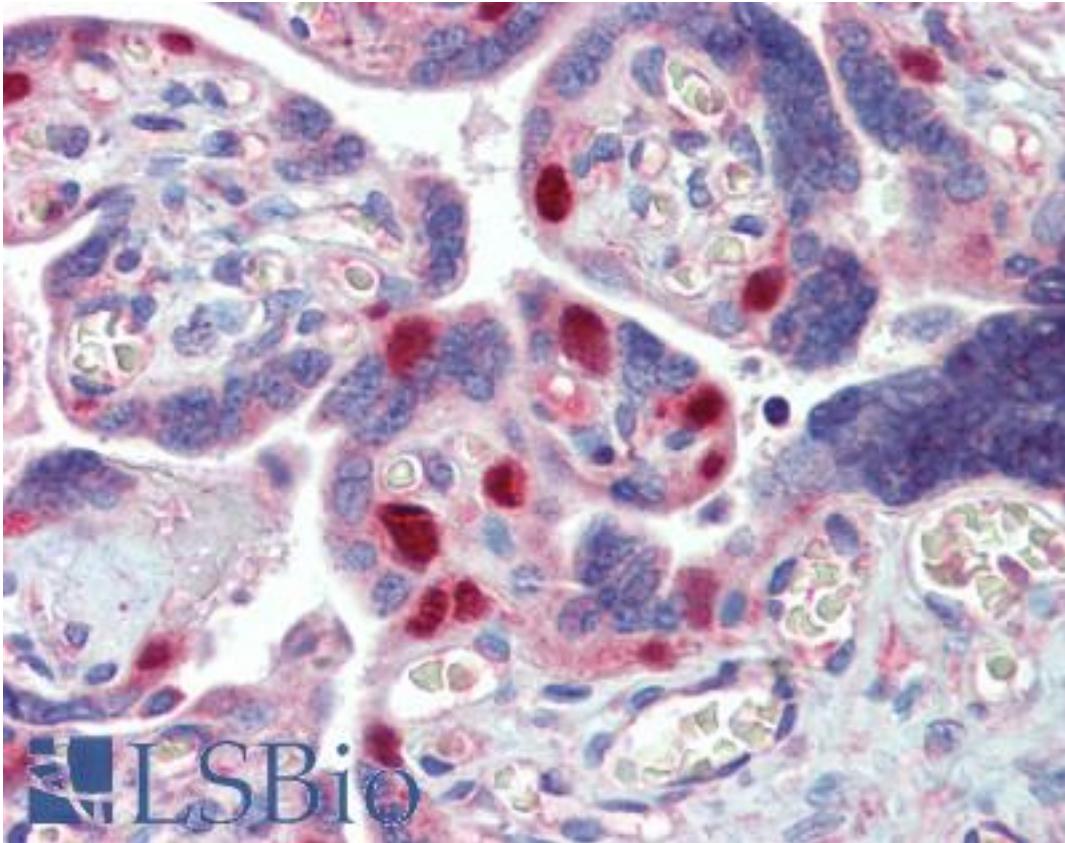


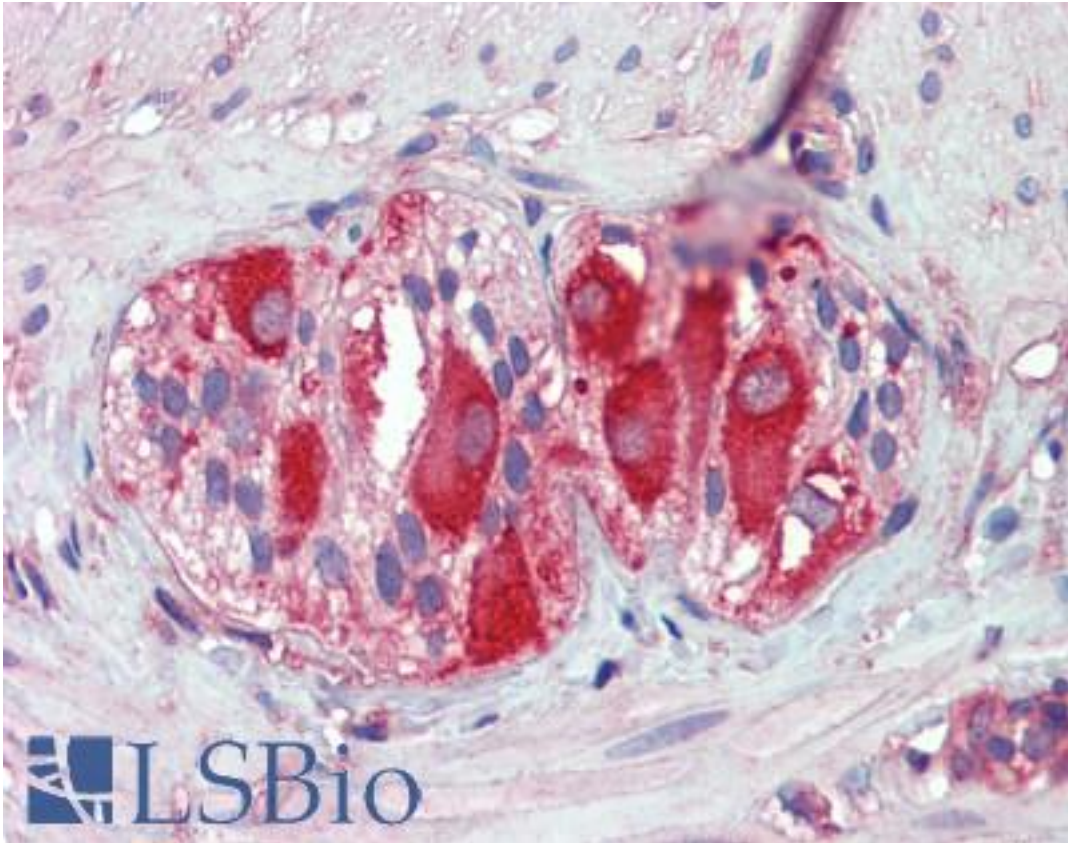
MCL1 / MCL 1 Rabbit anti-Human Polyclonal Antibody - LS-B3686 - LSBio	
<b>CatalogID:</b>	LS-B3686
<b>Validation:</b>	This antibody replaces catalog number LS-C63135. It has been validated for use in the following assays: IHC-P.
<b>Target:</b>	myeloid cell leukemia sequence 1 (BCL2-related) (MCL1)
<b>Synonyms:</b>	MCL1 Antibody, BCL2L3 Antibody, Bcl-2-like protein 3 Antibody, Bcl-2-related protein EAT/mcl1 Antibody, Bcl2-L-3 Antibody, MCL1S Antibody, MCL1L Antibody, Myeloid cell leukemia ES Antibody, MCL 1 Antibody, MCL1-ES Antibody, TM Antibody, EAT Antibody, Mcl-1 Antibody
<b>Host</b>	MCL1 antibody was produced in Rabbit
<b>Clonality:</b>	Polyclonal
<b>Immunogen Species:</b>	MCL1 / MCL 1 antibody was raised against Human
<b>Antigen Type:</b>	Synthetic peptide - KLH conjugated
<b>Immunogen:</b>	MCL1 / MCL 1 antibody was raised against synthetic peptide derived from the sequence of human Mcl-1, conjugated to KLH.
<b>Reactivity:</b>	Human, Monkey, Dog, Guinea pig, Pig, Rabbit
<b>Purification:</b>	Immunoaffinity purified
<b>Presentation:</b>	PBS, 0.09% sodium azide
<b>Recommended Storage:</b>	Store at -20°C.
<b>Usage Summary:</b>	Immunohistochemistry: LS-B3686 was validated for use in immunohistochemistry on a panel of 21 formalin-fixed, paraffin-embedded (FFPE) human tissues after heat induced antigen retrieval in pH 6.0 citrate buffer. After incubation with the primary antibody, slides were incubated with biotinylated secondary antibody, followed by alkaline phosphatase-streptavidin and chromogen. The stained slides were evaluated by a pathologist to confirm staining specificity. The optimal working concentration for LS-B3686 was determined to be 10 ug/ml.
<b>Uses:</b>	IHC - Paraffin (10 µg/ml), Immunofluorescence, Western blot (Optimal dilution to be determined by the researcher)
<b>Size:</b>	50 µg
<b>Concentration:</b>	1 mg/ml

**Immunohistochemistry Image:**



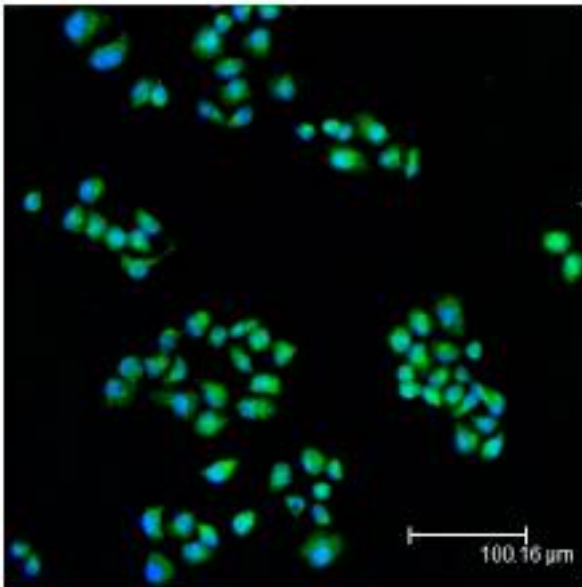
Anti-MCL1 antibody IHC of human placenta. Immunohistochemistry of formalin-fixed, paraffin-embedded tissue after heat-induced antigen retrieval. Antibody LS-B3686 concentration 10 ug/ml.

**Immunohistochemistry Image:**



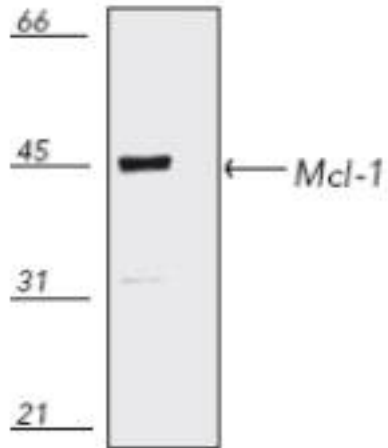
Anti-MCL1 antibody IHC of human small intestine, myenteric plexus. Immunohistochemistry of formalin-fixed, paraffin-embedded tissue after heat-induced antigen retrieval. Antibody LS-B3686 concentration 10 ug/ml.

**Immunofluorescence Image:**



Confocal immunofluorescent staining of HeLa cells using Mcl-1 polyclonal antibody (green); nuclei are stained in blue pseudocolor using DRAQ5.

**Western Blot Image:**



Western blot of human epidermoid carcinoma A431 cell lysate, probed with Mcl-1 polyclonal antibody.

**Requested From:**

Japan

Laboratory Reagent For In Vitro Research Use Only

Not for resale without prior written consent from LifeSpan BioSciences, Inc.

Created on 9/23/2014

© 2014 LifeSpan BioSciences