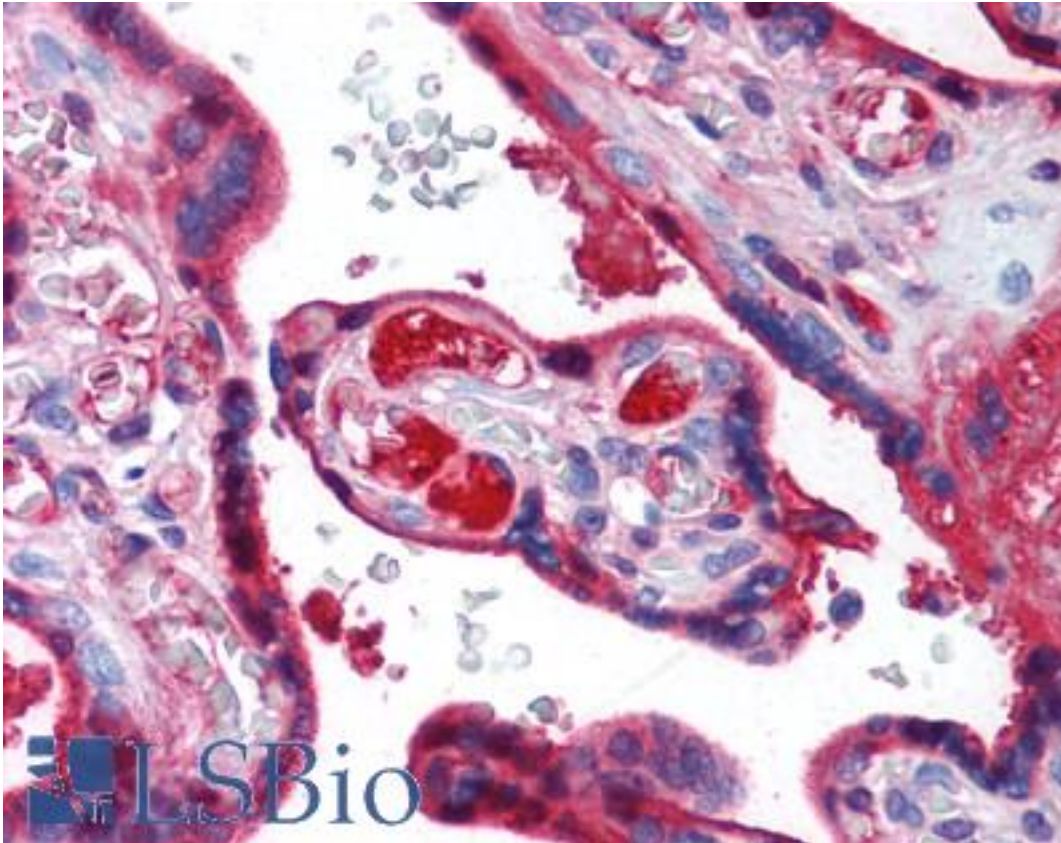


TF / Transferrin Mouse anti-Human Monoclonal (N-Terminus) (2A2) Antibody - LS-B3682 - LSBio	
<b>CatalogID:</b>	LS-B3682
<b>Validation:</b>	This antibody replaces catalog number LS-C11478. It has been validated for use in the following assays: IHC-P.
<b>Target:</b>	transferrin (TF)
<b>Synonyms:</b>	TF Antibody, PRO1557 Antibody, Serotransferrin Antibody, Siderophilin Antibody, TFQTL1 Antibody, Beta-1 metal-binding globulin Antibody, Transferrin Antibody, PRO2086 Antibody
<b>Host</b>	TF antibody was produced in Mouse
<b>Clonality:</b>	Monoclonal
<b>Isotype:</b>	IgG1
<b>Clone Name:</b>	2A2
<b>Immunogen Species:</b>	TF / Transferrin antibody was raised against Human
<b>Immunogen:</b>	TF / Transferrin antibody was raised against native human TF / Transferrin.
<b>Specificity:</b>	Reactive with the N-terminal domain of human transferrin. Inhibits proliferation of Con-A stimulated blood lymphocytes at 10(e)-6 M
<b>Epitope:</b>	N-Terminus
<b>Reactivity:</b>	Human
<b>Non-Reactivity:</b>	Mouse, Bovine, Rabbit
<b>Purification:</b>	Protein A purified
<b>Presentation:</b>	PBS, 0.09% sodium azide.
<b>Recommended Storage:</b>	Long term: -20°C; Short term: -20°C
<b>Usage Summary:</b>	Immunohistochemistry: LS-B3682 was validated for use in immunohistochemistry on a panel of 21 formalin-fixed, paraffin-embedded (FFPE) human tissues after heat induced antigen retrieval in pH 6.0 citrate buffer. After incubation with the primary antibody, slides were incubated with biotinylated secondary antibody, followed by alkaline phosphatase-streptavidin and chromogen. The stained slides were evaluated by a pathologist to confirm staining specificity. The optimal working concentration for LS-B3682 was determined to be 10 ug/ml.
<b>Uses:</b>	IHC - Paraffin (10 µg/ml), ELISA (1:500 - 1:5000), Functional Assay (Optimal dilution to be determined by the researcher)
<b>Size:</b>	50 µg
<b>Concentration:</b>	1 mg/ml

**Immunohistochemistry Image:**



Anti-TF / Transferrin antibody IHC of human placenta. Immunohistochemistry of formalin-fixed, paraffin-embedded tissue after heat-induced antigen retrieval. Antibody LS-B3682 concentration 10 ug/ml.

**Requested From:**

Japan

Laboratory Reagent For In Vitro Research Use Only

Not for resale without prior written consent from LifeSpan BioSciences, Inc.

Created on 9/23/2014

© 2014 LifeSpan BioSciences