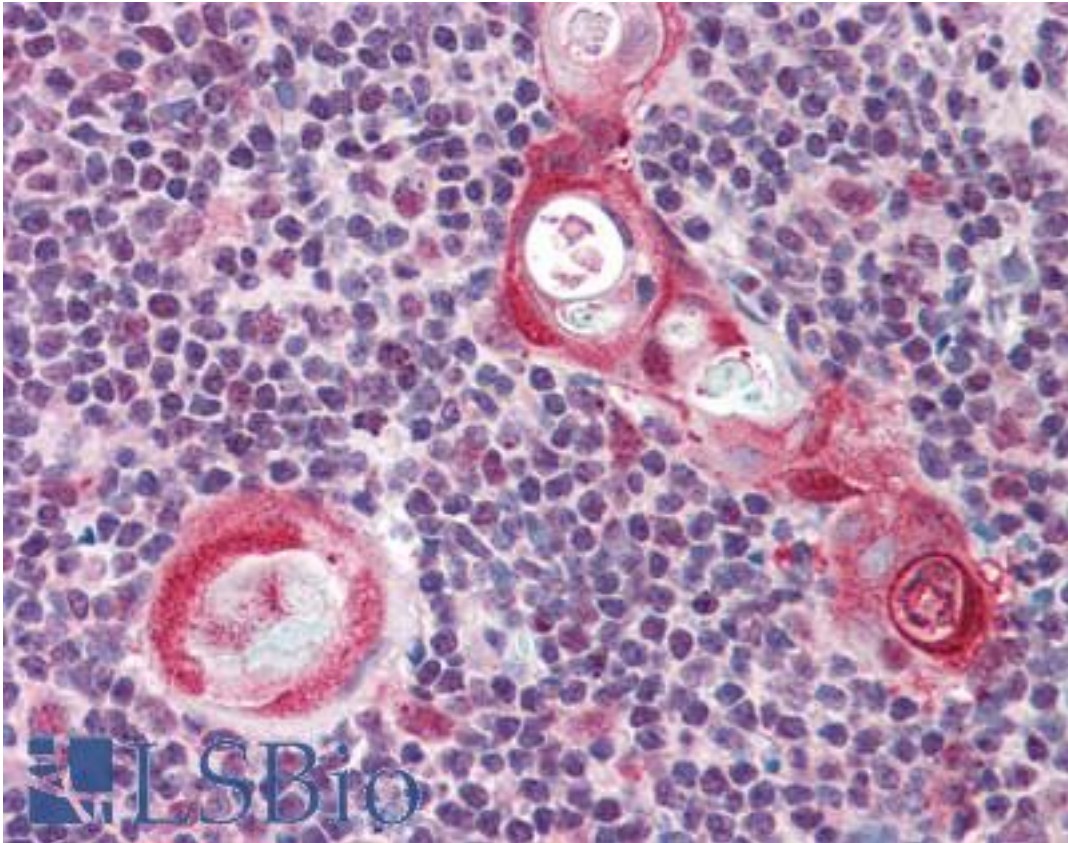


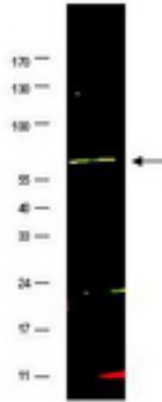
FANCG Rabbit anti-Human Polyclonal (aa1-12) Antibody - LS-B368 - LSBio	
CatalogID:	LS-B368
Validation:	This antibody replaces catalog number LS-C18975. It has been validated for use in the following assays: IHC.
Target:	Fanconi anemia, complementation group G (FANCG)
Synonyms:	FANCG Antibody, DNA repair protein XRCC9 Antibody, Fanconi anemia group G protein Antibody, FAG Antibody, Protein FACG Antibody, XRCC9 Antibody
Host	FANCG antibody was produced in Rabbit
Clonality:	Polyclonal
Immunogen Species:	FANCG antibody was raised against Human
Antigen Type:	Synthetic peptide
Immunogen:	FANCG antibody was raised against synthetic peptide from human FANCG.
Specificity:	Amino acids 1-12 of human FANCG protein.
Epitope:	aa1-12
Reactivity:	Human, Chimpanzee
Purification:	Immunoaffinity purified
Presentation:	0.02 M potassium phosphate, 0.15 M sodium chloride, pH 7.2, 0.01% sodium azide.
Recommended Storage:	+4°C or -20°C, Avoid repeated freezing and thawing.
Usage Summary:	Immunohistochemistry: LS-B368 was validated for use in immunohistochemistry on a panel of 21 formalin-fixed, paraffin-embedded (FFPE) human tissues after heat induced antigen retrieval in pH 6.0 citrate buffer. After incubation with the primary antibody, slides were incubated with biotinylated secondary antibody, followed by alkaline phosphatase-streptavidin and chromogen. The stained slides were evaluated by a pathologist to confirm staining specificity. The optimal working concentration for LS-B368 was determined to be 2.5 ug/ml.
Uses:	IHC - Paraffin (2.5 µg/ml), Immunofluorescence, Western blot (1:500 - 1:2000), ELISA (1:10000 - 1:50000) (Optimal dilution to be determined by the researcher)
Size:	50 µg
Concentration:	0.93 mg/ml

Immunohistochemistry Image:



Anti-FANCG antibody IHC of human thymus. Immunohistochemistry of formalin-fixed, paraffin-embedded tissue after heat-induced antigen retrieval. Antibody LS-B368 concentration 5 ug/ml.

Western Blot Image:



Anti-FANCG antibody - Western Blot. Western blot of affinity purified anti-FANCG antibody shows detection of a band at ~69 kD (arrowhead) corresponding to FANCG present in a HeLa whole cell lysate. Approximately 35 ug of lysate was separated by 4-20% Tris Glycine SDS-PAGE. After blocking, the membrane was probed overnight at 4C with the primary antibody diluted to 1:500. The membrane was washed and reacted with a 1:10000 dilution of IRDye800 conjugated Gt-a-Rabbit IgG [H&L] (for 45 min at room temperature (800 nm channel, green). Molecular weight estimation was made by comparison to prestained MW markers (indicated at left). IRDye800 fluorescence image was captured using the Odyssey Infrared Imaging System developed by LI-COR. IRDye is a trademark of LI-COR, Inc. Other detection systems will yield similar results.

Requested From:

Japan

Laboratory Reagent For In Vitro Research Use Only

Not for resale without prior written consent from LifeSpan BioSciences, Inc.

Created on 9/23/2014

© 2014 LifeSpan BioSciences