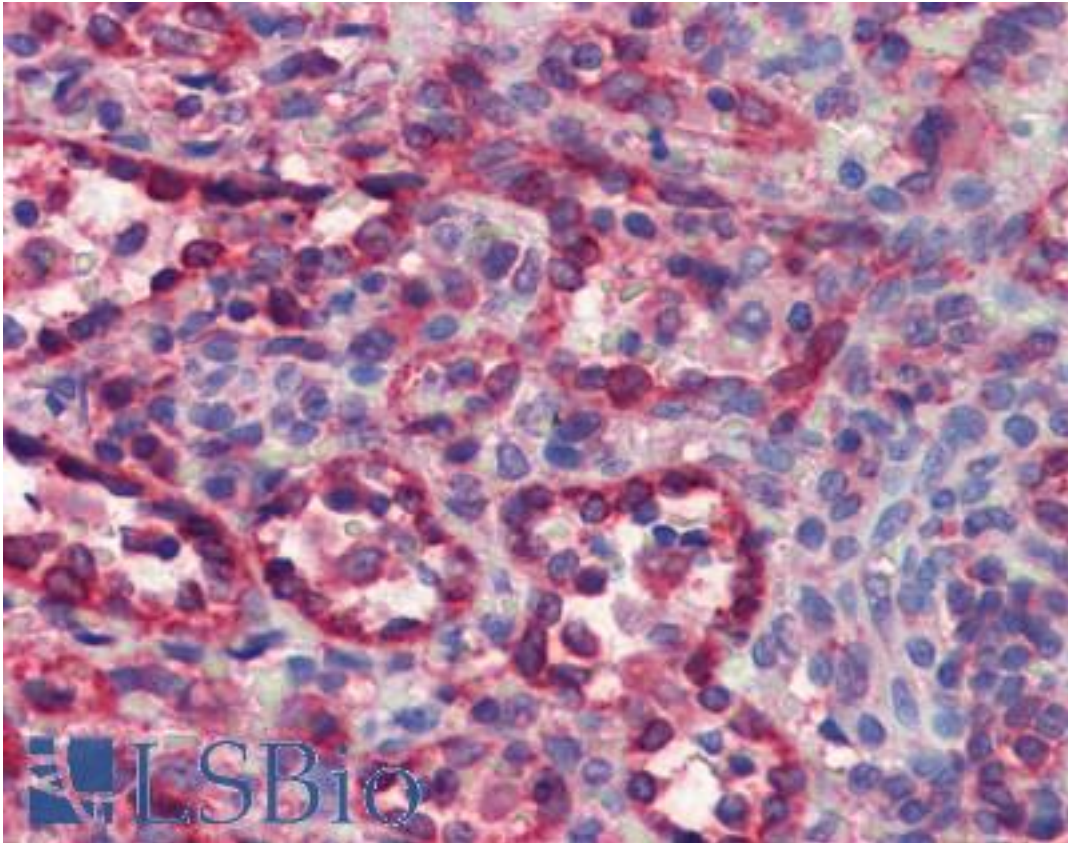


CYCS / Cytochrome c Mouse anti-Horse Monoclonal (7H8.2C12) Antibody - LS-B3673 - LSBio

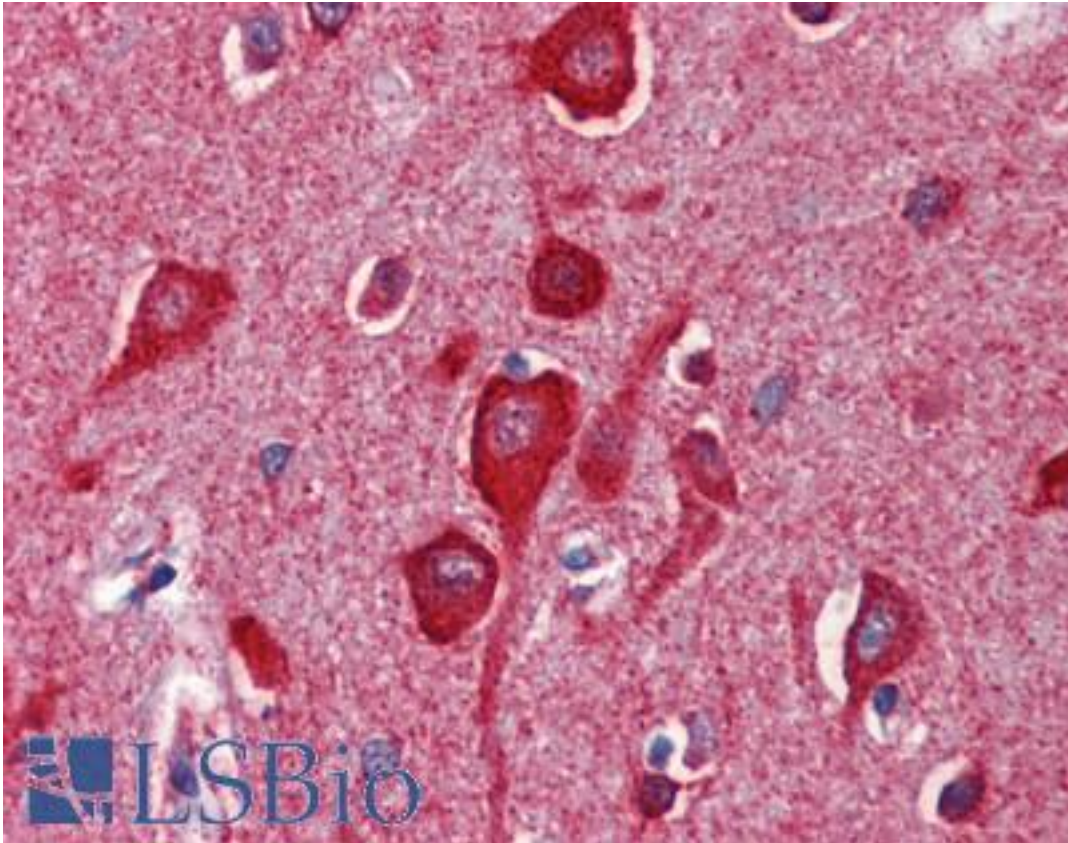
CatalogID:	LS-B3673
Validation:	This antibody replaces catalog number LS-C63127. It has been validated for use in the following assays: IHC-P.
Target:	cytochrome c, somatic (CYCS)
Synonyms:	CYCS Antibody, CYC Antibody, HCS Antibody, THC4 Antibody, Cytochrome c Antibody, Cytochrome c, somatic Antibody
Host	CYCS antibody was produced in Mouse
Clonality:	Monoclonal
Isotype:	IgG2b
Clone Name:	7H8.2C12
Immunogen Species:	CYCS / Cytochrome c antibody was raised against Horse
Antigen Type:	Protein
Immunogen:	CYCS / Cytochrome c antibody was raised against horse cytochrome c.
Specificity:	Detects an ~14kD protein, corresponding to the apparent molecular mass of Cytochrome c on Western blots with samples from human, mouse, rat, bovine, guinea pig, hamster, monkey, rabbit and sheep origins. This antibody detects denatured Cytochrome c in applications such as Western blot, it does not recognize the native protein. The epitope of this antibody was mapped to a region within amino acids 93-104 of horse Cytochrome.
Reactivity:	Horse, Human, Monkey, Mouse, Rat, Bovine, Guinea pig, Hamster, Pig, Rabbit, Sheep
Purification:	Protein G purified
Presentation:	PBS, pH 7.2, 50% glycerol, 0.09% azide
Recommended Storage:	Short term 4°C, long term aliquot and store at -20°C, avoid freeze thaw cycles.
Usage Summary:	Immunohistochemistry: LS-B3673 was validated for use in immunohistochemistry on a panel of 21 formalin-fixed, paraffin-embedded (FFPE) human tissues after heat induced antigen retrieval in pH 6.0 citrate buffer. After incubation with the primary antibody, slides were incubated with biotinylated secondary antibody, followed by alkaline phosphatase-streptavidin and chromogen. The stained slides were evaluated by a pathologist to confirm staining specificity. The optimal working concentration for LS-B3673 was determined to be 5 ug/ml.
Uses:	IHC - Paraffin (5 µg/ml), Western blot (1 µg/ml) (Optimal dilution to be determined by the researcher)
Size:	50 µg
Concentration:	1 mg/ml

Immunohistochemistry Image:



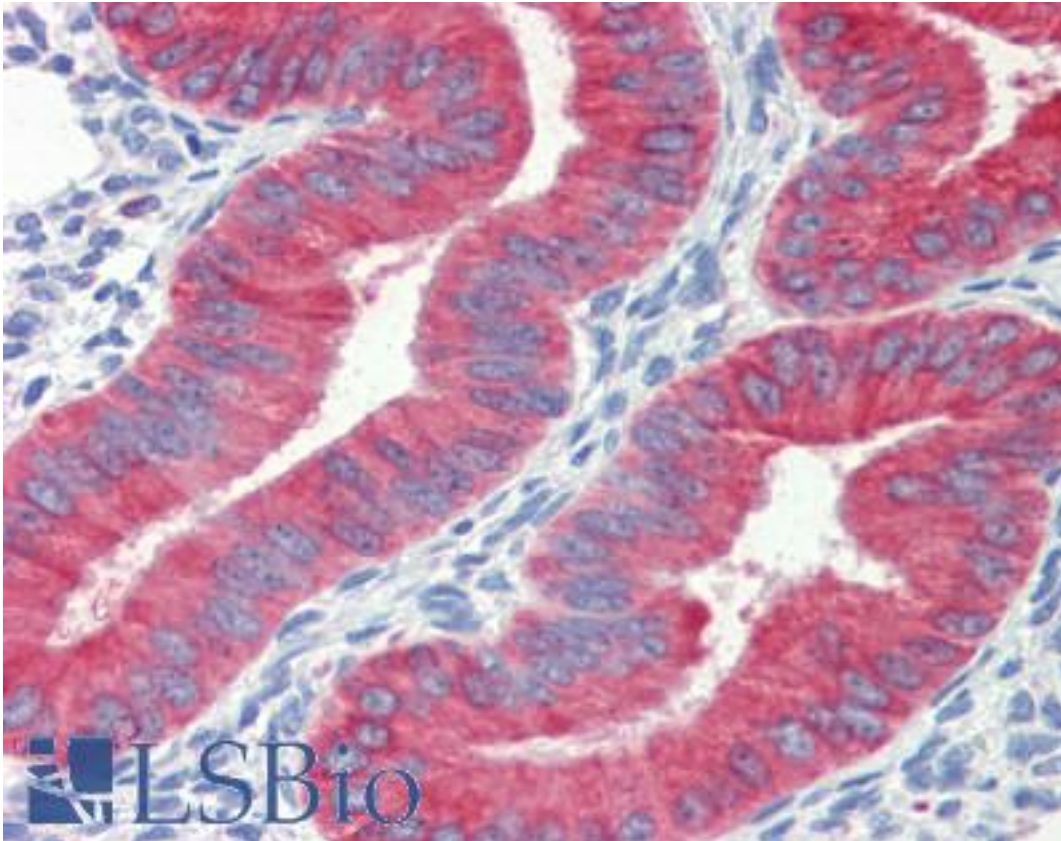
Anti-Cytochrome c antibody IHC of human spleen. Immunohistochemistry of formalin-fixed, paraffin-embedded tissue after heat-induced antigen retrieval. Antibody LS-B3673 concentration 5 ug/ml.

Immunohistochemistry Image:



Anti-Cytochrome c antibody IHC of human brain, cortex. Immunohistochemistry of formalin-fixed, paraffin-embedded tissue after heat-induced antigen retrieval. Antibody LS-B3673 concentration 5 ug/ml.

Immunohistochemistry Image:



Anti-Cytochrome c antibody IHC of human uterus. Immunohistochemistry of formalin-fixed, paraffin-embedded tissue after heat-induced antigen retrieval. Antibody LS-B3673 concentration 5 ug/ml.

Requested From:

Japan

Laboratory Reagent For In Vitro Research Use Only

Not for resale without prior written consent from LifeSpan BioSciences, Inc.

Created on 9/23/2014

© 2014 LifeSpan BioSciences