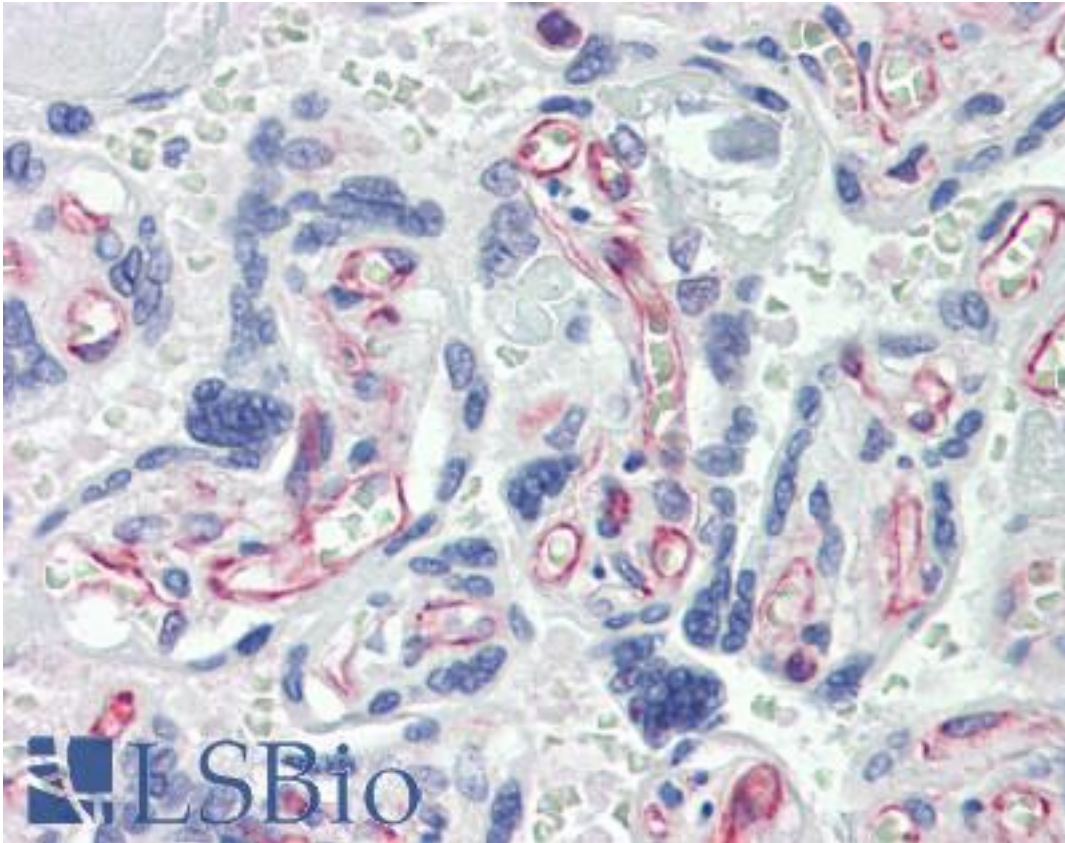


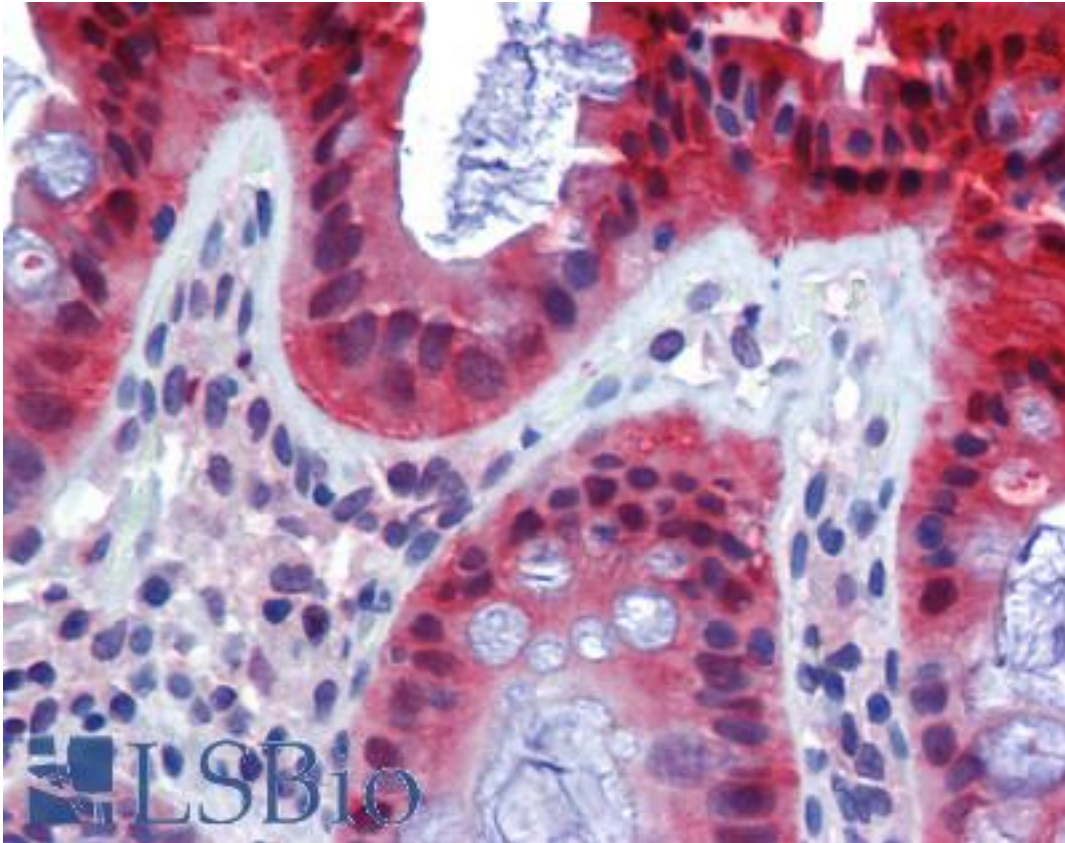
CASP7 / Caspase 7 Mouse anti-Human Monoclonal (7-1-11) Antibody - LS-B3670 - LSBio	
<b>CatalogID:</b>	LS-B3670
<b>Validation:</b>	This antibody replaces catalog number LS-C63124. It has been validated for use in the following assays: IHC-P.
<b>Target:</b>	caspase 7, apoptosis-related cysteine peptidase (CASP7)
<b>Synonyms:</b>	CASP7 Antibody, Apoptotic protease Mch-3 Antibody, Caspase 7 Antibody, Caspase-7 Antibody, ICE-LAP3 Antibody, LICE2 Antibody, MCH3 Antibody, ICE-like apoptotic protease 3 Antibody, CASP-7 Antibody, CMH-1 Antibody
<b>Family / Subfamily:</b>	Protease / Cysteine C14
<b>Host</b>	CASP7 antibody was produced in Mouse
<b>Clonality:</b>	Monoclonal
<b>Isotype:</b>	IgG
<b>Clone Name:</b>	7-1-11
<b>Immunogen Species:</b>	CASP7 / Caspase 7 antibody was raised against Human
<b>Antigen Type:</b>	Recombinant protein
<b>Immunogen:</b>	CASP7 / Caspase 7 antibody was raised against recombinant human caspase-7 full length protein.
<b>Specificity:</b>	Detects an ~37 kD protein, corresponding to the apparent molecular mass of the caspase-7 on SDS-PAGE immunoblots, in samples from human, mouse, rat, monkey, dog, sheep, rabbit, pig and hamster origins. This antibody recognizes the unprocessed pro-caspase-7 (p35), caspase-7 lacking the short amino-terminal pro domain (32 kD) and the fully processed caspase-7 (p19) in apoptotic cell extracts.
<b>Reactivity:</b>	Human, Monkey, Mouse, Rat, Dog, Hamster, Pig, Rabbit, Sheep
<b>Purification:</b>	Protein G purified
<b>Presentation:</b>	PBS (10 mM sodium phosphate, pH 7.2, 50 mM sodium chloride, 0.1 mM PMSF). Sourced in Ascites.
<b>Recommended Storage:</b>	Short term 4°C, long term aliquot and store at -20°C, avoid freeze thaw cycles. For maximum product recovery, after thawing, centrifuge the product vial before removing cap.
<b>Usage Summary:</b>	Immunohistochemistry: LS-B3670 was validated for use in immunohistochemistry on a panel of 21 formalin-fixed, paraffin-embedded (FFPE) human tissues after heat induced antigen retrieval in pH 6.0 citrate buffer. After incubation with the primary antibody, slides were incubated with biotinylated secondary antibody, followed by alkaline phosphatase-streptavidin and chromogen. The stained slides were evaluated by a pathologist to confirm staining specificity. The optimal working concentration for LS-B3670 was determined to be 10 ug/ml.
<b>Uses:</b>	IHC - Paraffin (10 µg/ml), Western blot (Optimal dilution to be determined by the researcher)
<b>Size:</b>	50 µg
<b>Concentration:</b>	1 mg/ml

**Immunohistochemistry Image:**



Anti-Caspase 7 antibody IHC of human placenta. Immunohistochemistry of formalin-fixed, paraffin-embedded tissue after heat-induced antigen retrieval. Antibody LS-B3670 concentration 10 ug/ml.

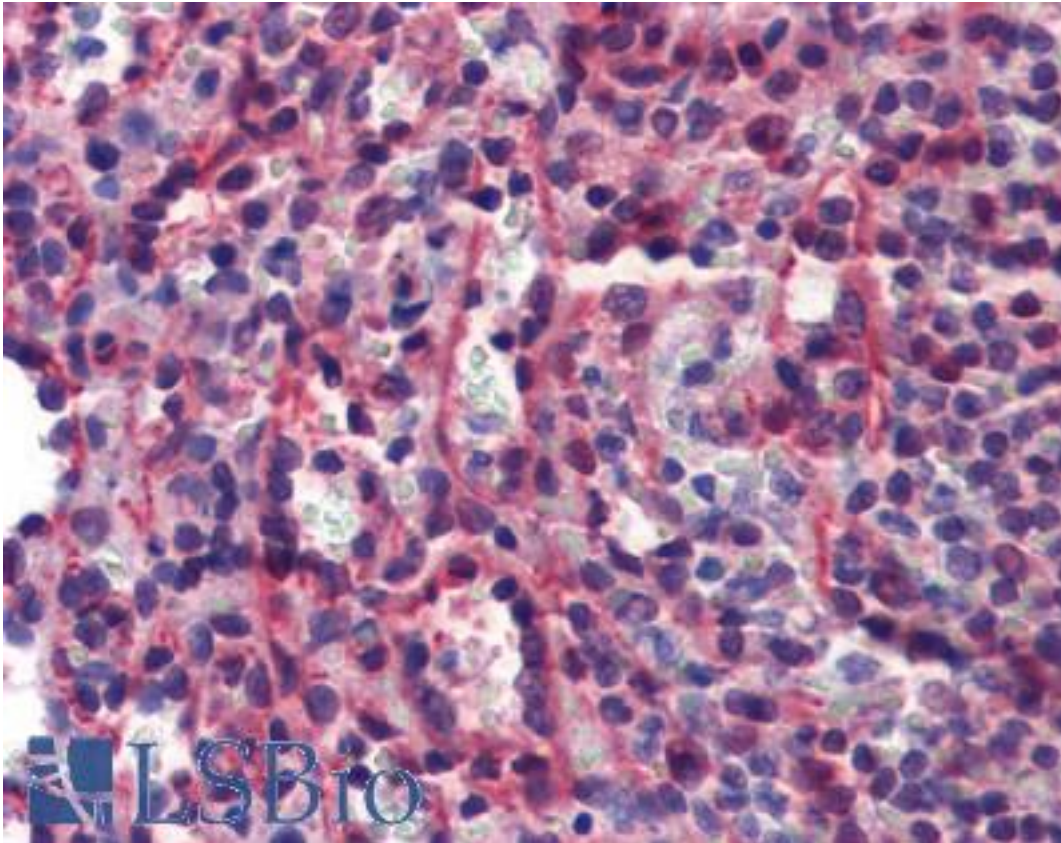
**Immunohistochemistry Image:**



Anti-Caspase 7 antibody IHC of human colon. Immunohistochemistry of formalin-fixed, paraffin-embedded tissue after heat-induced antigen retrieval. Antibody LS-B3670 concentration 10 ug/ml.



**Immunohistochemistry Image:**



Anti-Caspase 7 antibody IHC of human spleen. Immunohistochemistry of formalin-fixed, paraffin-embedded tissue after heat-induced antigen retrieval. Antibody LS-B3670 concentration 10 ug/ml.

**Requested From:**

Japan

Laboratory Reagent For In Vitro Research Use Only

Not for resale without prior written consent from LifeSpan BioSciences, Inc.

Created on 9/23/2014

© 2014 LifeSpan BioSciences