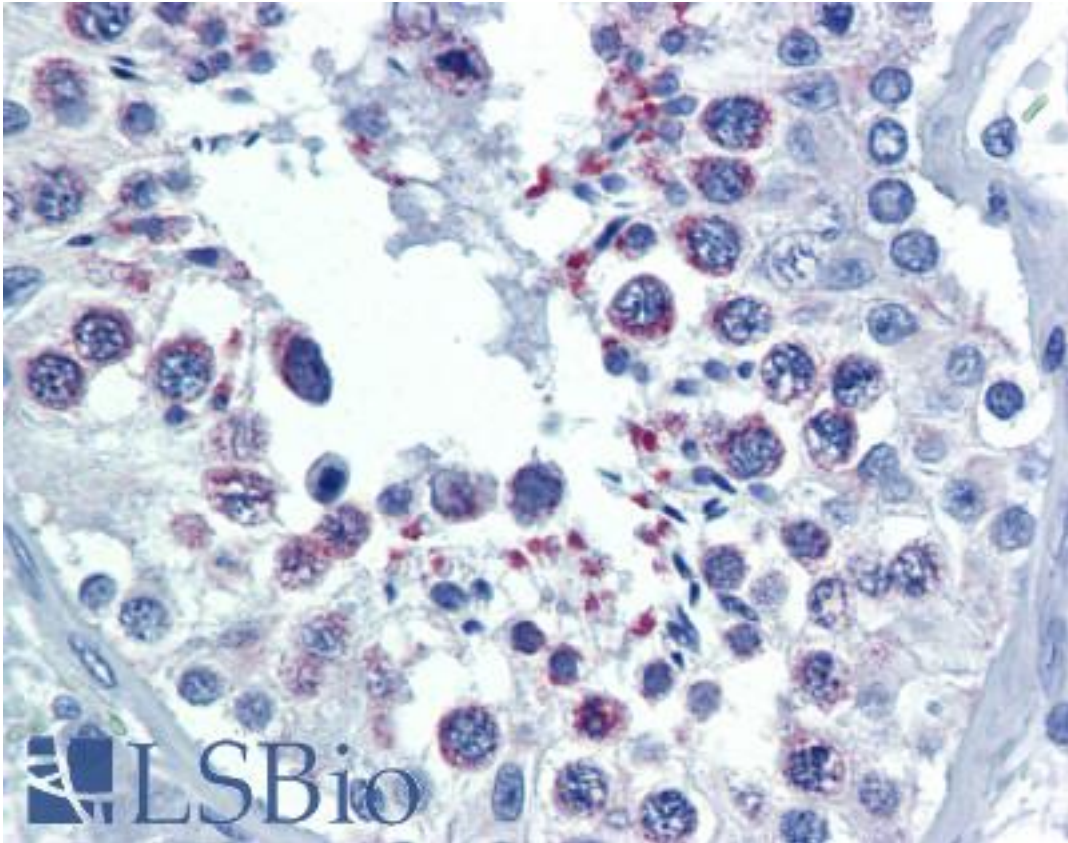


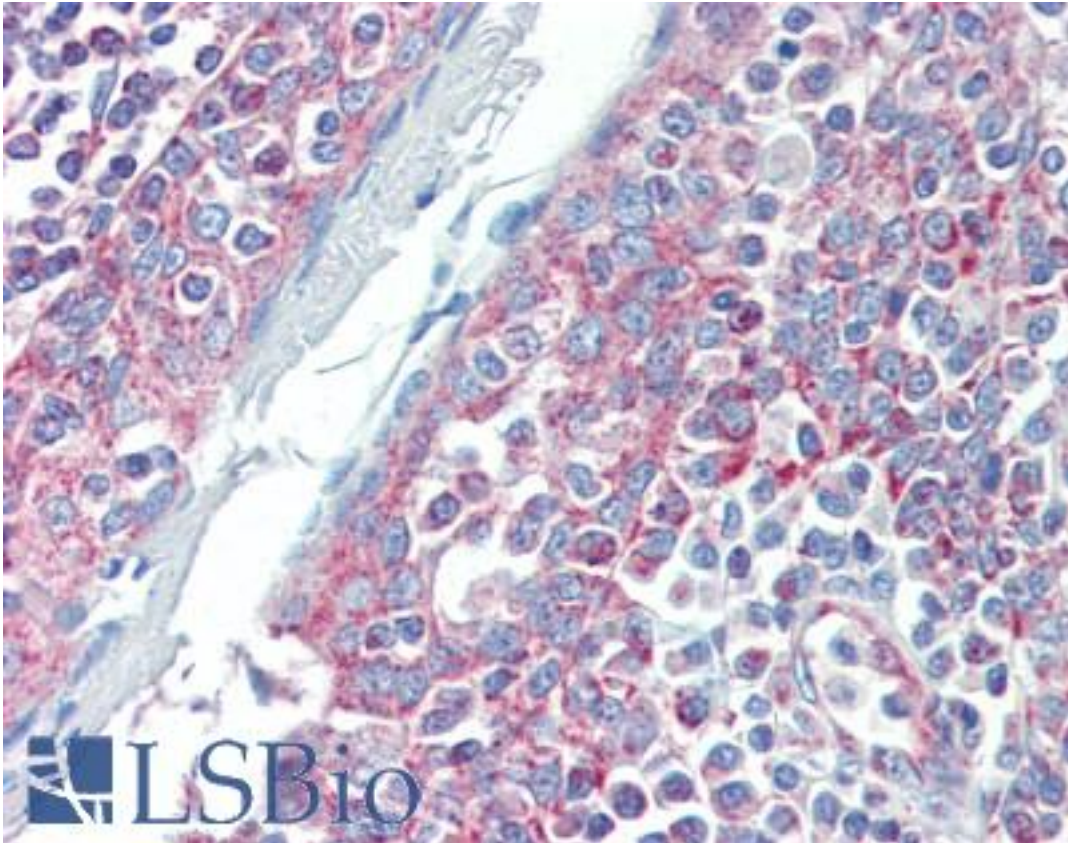
DIABLO / SMAC Mouse anti-Human Monoclonal (79-1-83) Antibody - LS-B3668 - LSBio	
CatalogID:	LS-B3668
Validation:	This antibody replaces catalog number LS-C63092. It has been validated for use in the following assays: IHC-P.
Target:	diablo, IAP-binding mitochondrial protein
Synonyms:	DIABLO Antibody, DFNA64 Antibody, DIABLO-S Antibody, Diablo homolog, mitochondrial Antibody, SMAC3 Antibody, Mitochondrial Smac protein Antibody, SMAC Antibody
Family / Subfamily:	Apoptosis / Not assigned-Apoptosis
Host	DIABLO antibody was produced in Mouse
Clonality:	Monoclonal
Isotype:	IgG2b
Clone Name:	79-1-83
Immunogen Species:	DIABLO / SMAC antibody was raised against Human
Antigen Type:	Recombinant protein
Immunogen:	DIABLO / SMAC antibody was raised against recombinant full length human Smac/DIABLO.
Specificity:	Human and monkey Smac/DIABLO.
Reactivity:	Human, Monkey
Purification:	Protein G purified
Presentation:	PBS, pH 7.2, 0.09% azide, 50% glycerol
Recommended Storage:	Store at -20°C.
Usage Summary:	Immunohistochemistry: LS-B3668 was validated for use in immunohistochemistry on a panel of 21 formalin-fixed, paraffin-embedded (FFPE) human tissues after heat induced antigen retrieval in pH 6.0 citrate buffer. After incubation with the primary antibody, slides were incubated with biotinylated secondary antibody, followed by alkaline phosphatase-streptavidin and chromogen. The stained slides were evaluated by a pathologist to confirm staining specificity. The optimal working concentration for LS-B3668 was determined to be 10 ug/ml.
Uses:	IHC - Paraffin (10 µg/ml), Western blot (Optimal dilution to be determined by the researcher)
Size:	50 µg
Concentration:	1 mg/ml

Immunohistochemistry Image:



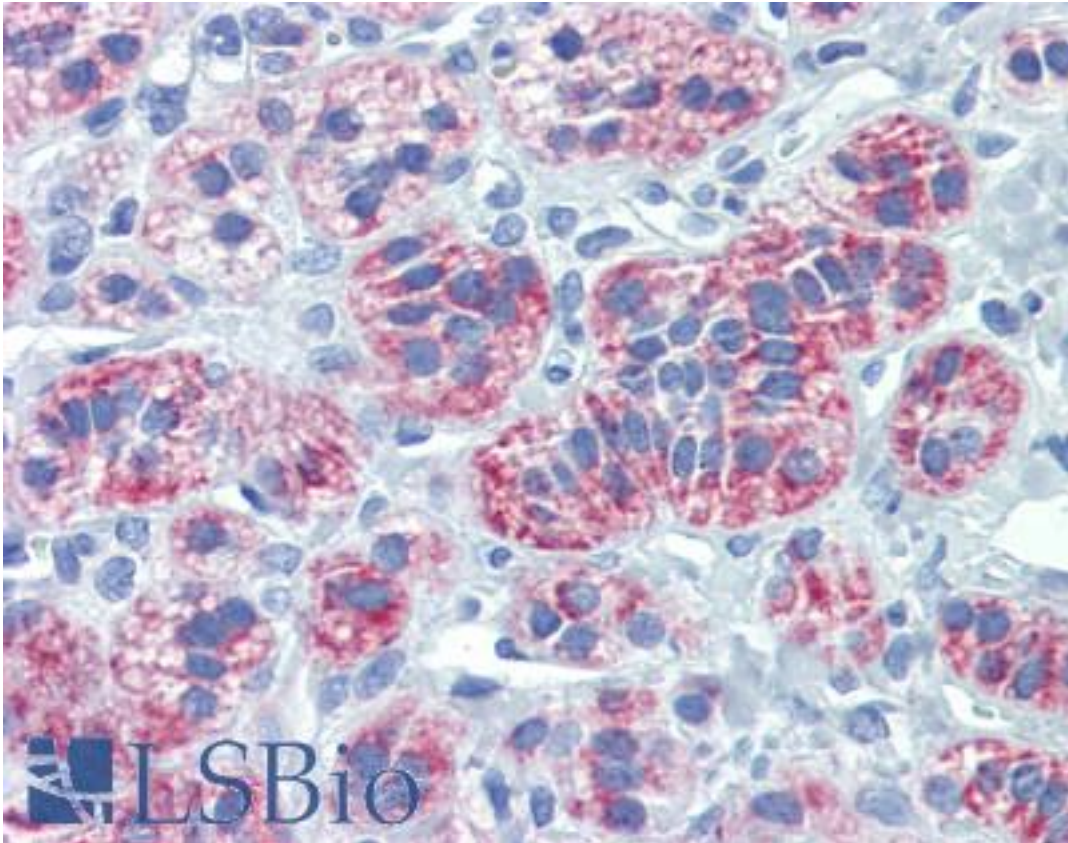
Anti-DIABLO / SMAC antibody IHC of human testis. Immunohistochemistry of formalin-fixed, paraffin-embedded tissue after heat-induced antigen retrieval. Antibody LS-B3668 concentration 10 ug/ml.

Immunohistochemistry Image:



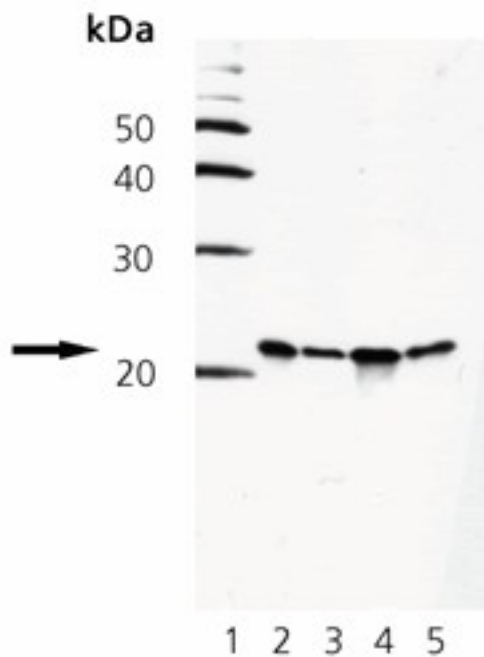
Anti-DIABLO / SMAC antibody IHC of human tonsil. Immunohistochemistry of formalin-fixed, paraffin-embedded tissue after heat-induced antigen retrieval. Antibody LS-B3668 concentration 10 ug/ml.

Immunohistochemistry Image:



Anti-DIABLO / SMAC antibody IHC of human adrenal. Immunohistochemistry of formalin-fixed, paraffin-embedded tissue after heat-induced antigen retrieval. Antibody LS-B3668 concentration 10 ug/ml.

Western Blot Image:



Western blot analysis of Smac/Diablo. Lane 1: MW marker, Lane 2: 293, Lane 3: HeLa, Lane 4: Jurkat, Lane 5: Vero

Requested From:	Japan
Laboratory Reagent For In Vitro Research Use Only	
Not for resale without prior written consent from LifeSpan BioSciences, Inc.	
Created on 9/23/2014	
© 2014 LifeSpan BioSciences	