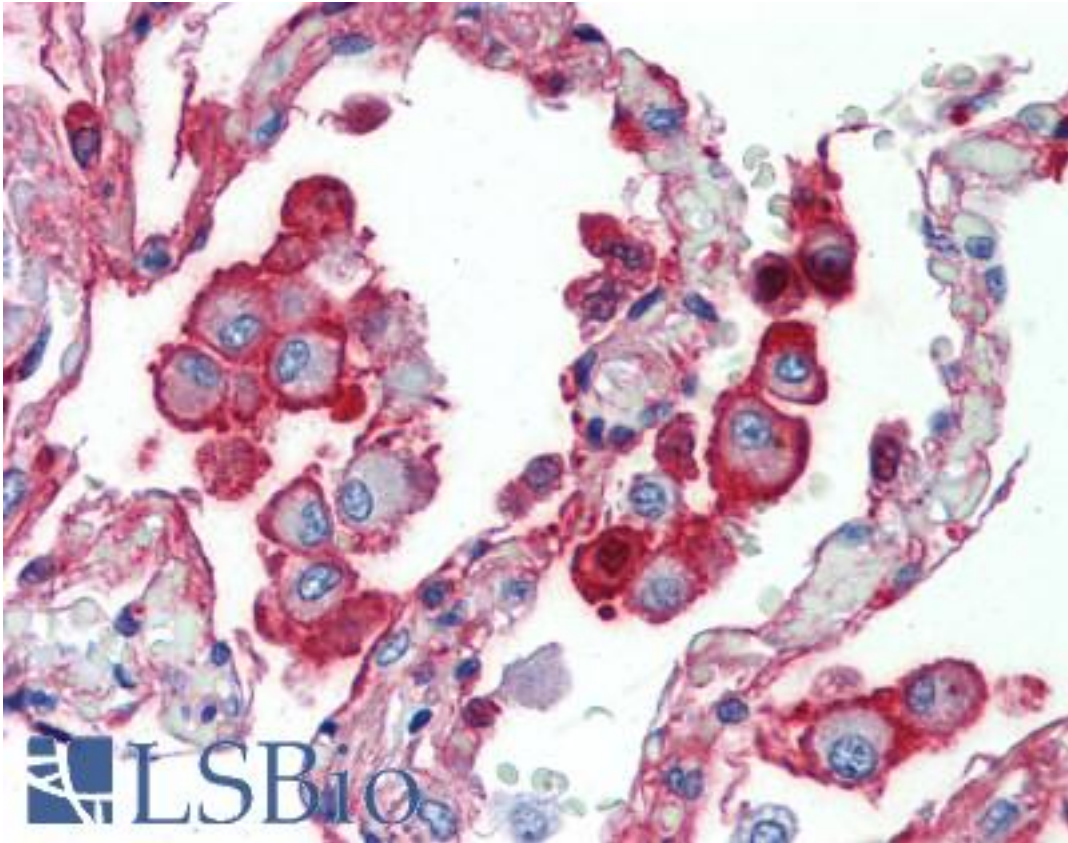


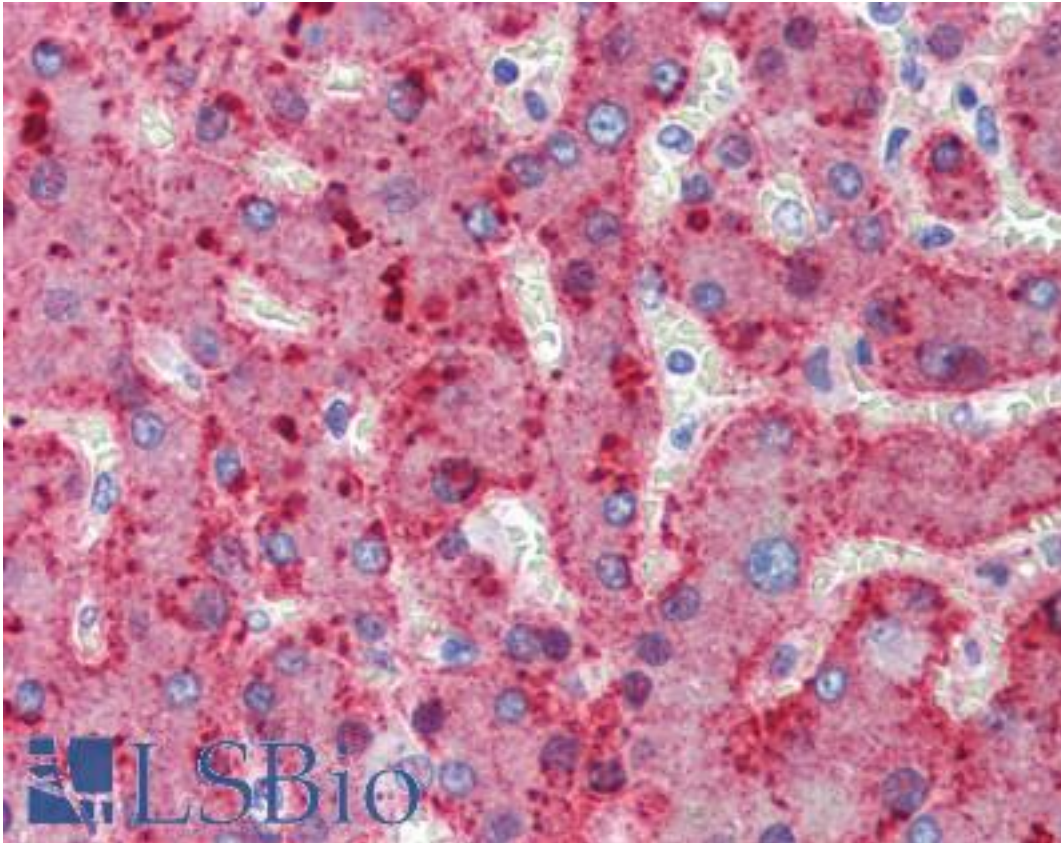
ALPL / Alkaline Phosphatase Mouse anti-Human Monoclonal Antibody - LS-B3666 - LSBio	
CatalogID:	LS-B3666
Validation:	This antibody replaces catalog number LS-C17269. It has been validated for use in the following assays: IHC-P.
Target:	alkaline phosphatase, liver/bone/kidney (ALPL)
Synonyms:	ALPL Antibody, Alkaline phosphomonoesterase Antibody, AP-TNAP Antibody, Alkaline phosphatase liver Antibody, APTNAP Antibody, Glycerophosphatase Antibody, Tissue-nonspecific ALP Antibody, TNAP Antibody, HOPS Antibody, Liver alkaline phosphatase Antibody, TNSALP Antibody
Host	ALPL antibody was produced in Mouse
Clonality:	Monoclonal
Isotype:	IgG1
Immunogen Species:	ALPL / Alkaline Phosphatase antibody was raised against Human
Antigen Type:	Purified protein
Immunogen:	ALPL / Alkaline Phosphatase antibody was raised against purified alkaline phosphatase (native) from human bone.
Specificity:	Recognizes Alkaline Phosphatase from human bone. Species cross-reactivity: Alkaline phosphatase from human placenta and calf intestine.
Reactivity:	Human, Bovine
Purification:	Protein A purified
Presentation:	PBS, pH 7.2, 0.09% sodium azide
Recommended Storage:	Long term: -20°C; Short term: +4°C. Avoid repeat freeze-thaw cycles.
Usage Summary:	Immunohistochemistry: LS-B3666 was validated for use in immunohistochemistry on a panel of 21 formalin-fixed, paraffin-embedded (FFPE) human tissues after heat induced antigen retrieval in pH 6.0 citrate buffer. After incubation with the primary antibody, slides were incubated with biotinylated secondary antibody, followed by alkaline phosphatase-streptavidin and chromogen. The stained slides were evaluated by a pathologist to confirm staining specificity. The optimal working concentration for LS-B3666 was determined to be 10 ug/ml. Suitable for use in ELISA and Western Blot. Western Blot: Stains a band of bone AP at ~90kD.
Uses:	IHC - Paraffin (10 µg/ml), Western blot, ELISA (Optimal dilution to be determined by the researcher)
Size:	50 µg
Concentration:	1 mg/ml

Immunohistochemistry Image:



Anti-Bone Alkaline Phosphatase antibody IHC of human lung. Immunohistochemistry of formalin-fixed, paraffin-embedded tissue after heat-induced antigen retrieval. Antibody LS-B3666 concentration 10 ug/ml.

Immunohistochemistry Image:



Anti-Bone Alkaline Phosphatase antibody IHC of human liver. Immunohistochemistry of formalin-fixed, paraffin-embedded tissue after heat-induced antigen retrieval. Antibody LS-B3666 concentration 10 ug/ml.

Requested From:

Japan

Laboratory Reagent For In Vitro Research Use Only

Not for resale without prior written consent from LifeSpan BioSciences, Inc.

Created on 9/23/2014

© 2014 LifeSpan BioSciences