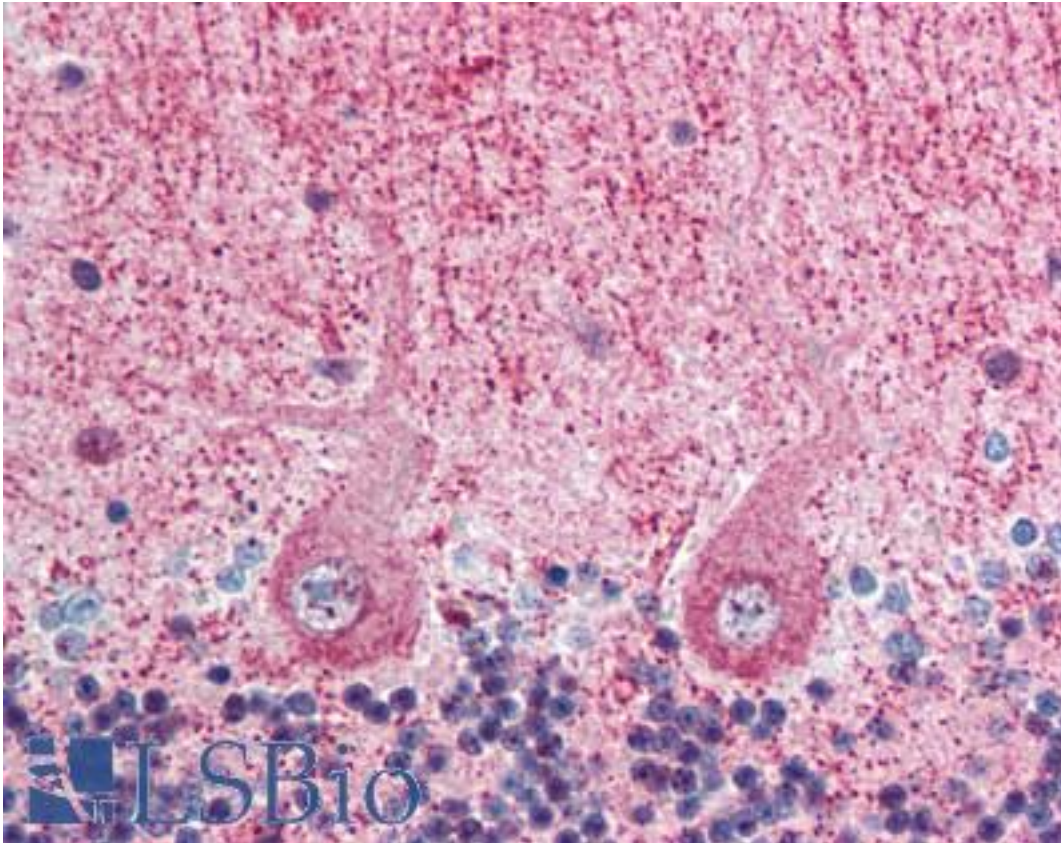


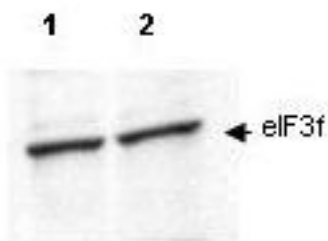
EIF3S5 / EIF3F Rabbit anti-Human Polyclonal (aa114-125) Antibody - LS-B366 - LSBio	
CatalogID:	LS-B366
Validation:	This antibody replaces catalog number LS-C18908. It has been validated for use in the following assays: IHC.
Target:	eukaryotic translation initiation factor 3, subunit F (EIF3F)
Synonyms:	EIF3F Antibody, Deubiquitinating enzyme eIF3f Antibody, EIF-3-epsilon Antibody, EIF3 p47 Antibody, EIF3S5 Antibody, EIF3-epsilon Antibody, EIF3-p47 Antibody
Host	EIF3F antibody was produced in Rabbit
Clonality:	Polyclonal
Immunogen Species:	EIF3S5 / EIF3F antibody was raised against Human
Antigen Type:	Synthetic peptide
Immunogen:	EIF3S5 / EIF3F antibody was raised against synthetic peptide from human EIF3F.
Specificity:	Amino acids 114-125 of human eIF3f protein.
Epitope:	aa114-125
Reactivity:	Human, Chimpanzee, Mouse, Rat, Bovine, Chicken
Purification:	Immunoaffinity purified
Presentation:	0.02 M potassium phosphate, 0.15 M sodium chloride, pH 7.2, 0.01% sodium azide.
Recommended Storage:	+4°C or -20°C, Avoid repeated freezing and thawing.
Usage Summary:	Immunohistochemistry: LS-B366 was validated for use in immunohistochemistry on a panel of 21 formalin-fixed, paraffin-embedded (FFPE) human tissues after heat induced antigen retrieval in pH 6.0 citrate buffer. After incubation with the primary antibody, slides were incubated with biotinylated secondary antibody, followed by alkaline phosphatase-streptavidin and chromogen. The stained slides were evaluated by a pathologist to confirm staining specificity. The optimal working concentration for LS-B366 was determined to be 2.5 ug/ml.
Uses:	IHC - Paraffin (2.5 µg/ml), Immunofluorescence, Western blot (1:200 - 1:2000), Immunoprecipitation, ELISA (1:10000 - 1:40000) (Optimal dilution to be determined by the researcher)
Size:	50 µg
Concentration:	1 mg/ml

Immunohistochemistry Image:



Anti-EIF3F antibody IHC of human brain, cerebellum. Immunohistochemistry of formalin-fixed, paraffin-embedded tissue after heat-induced antigen retrieval. Antibody LS-B366 concentration 5 ug/ml.

Western Blot Image:



Anti-eIF3F Antibody - Western Blot. Western blot of affinity purified anti-eIF3f antibody shows detection of endogenous eIF3f in lysates from both control HeLa cells (lane 1) and HeLa cells transformed with the kinase cdk11 (lane 2). Cdk11 is responsible for phosphorylating eIF3f in vivo. After SDS-PAGE and transfer, the membrane was probed with the primary antibody diluted to 1:200. This antibody recognizes both phosphorylated and non-phosphorylated eIF3f. Personal Communication, Jiaqi Shi, Univ. Arizona, Tucson, AZ.

Requested From:

Japan

Laboratory Reagent For In Vitro Research Use Only

Not for resale without prior written consent from LifeSpan BioSciences, Inc.

Created on 9/23/2014

© 2014 LifeSpan BioSciences