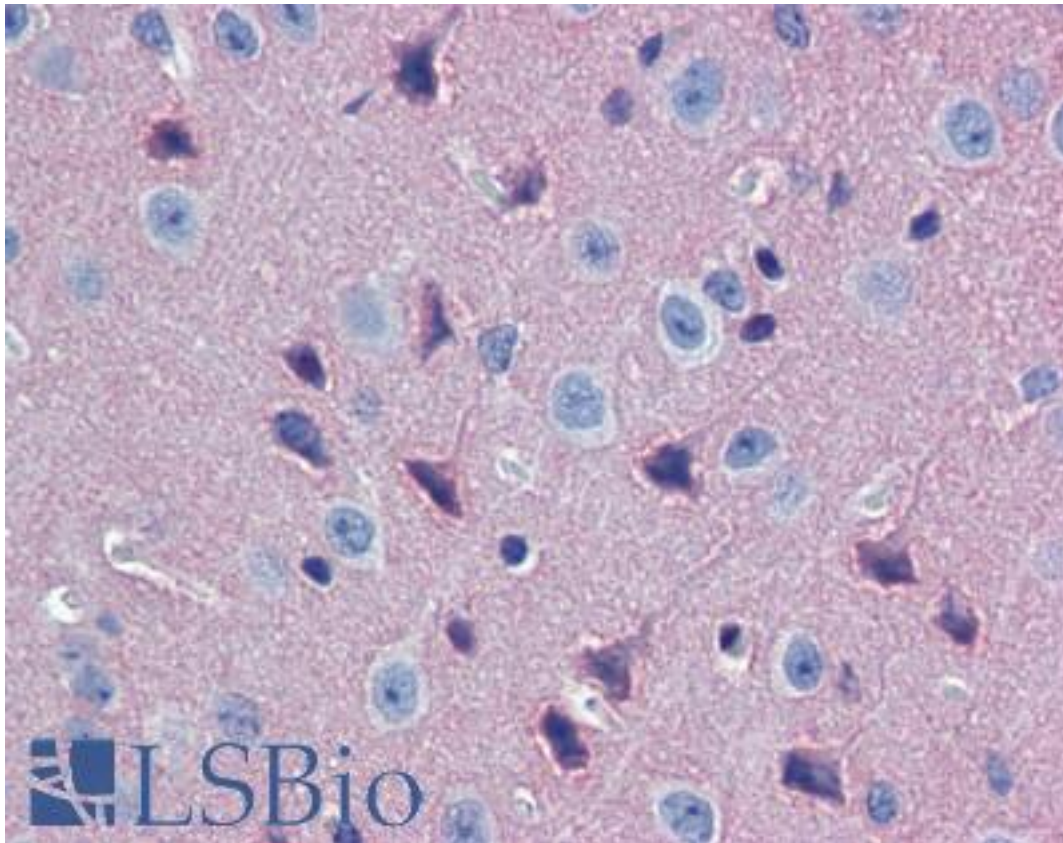


**GNAO1 Rabbit anti-Mouse Polyclonal (aa345-354) Antibody - LS-B3655 - LSBio**

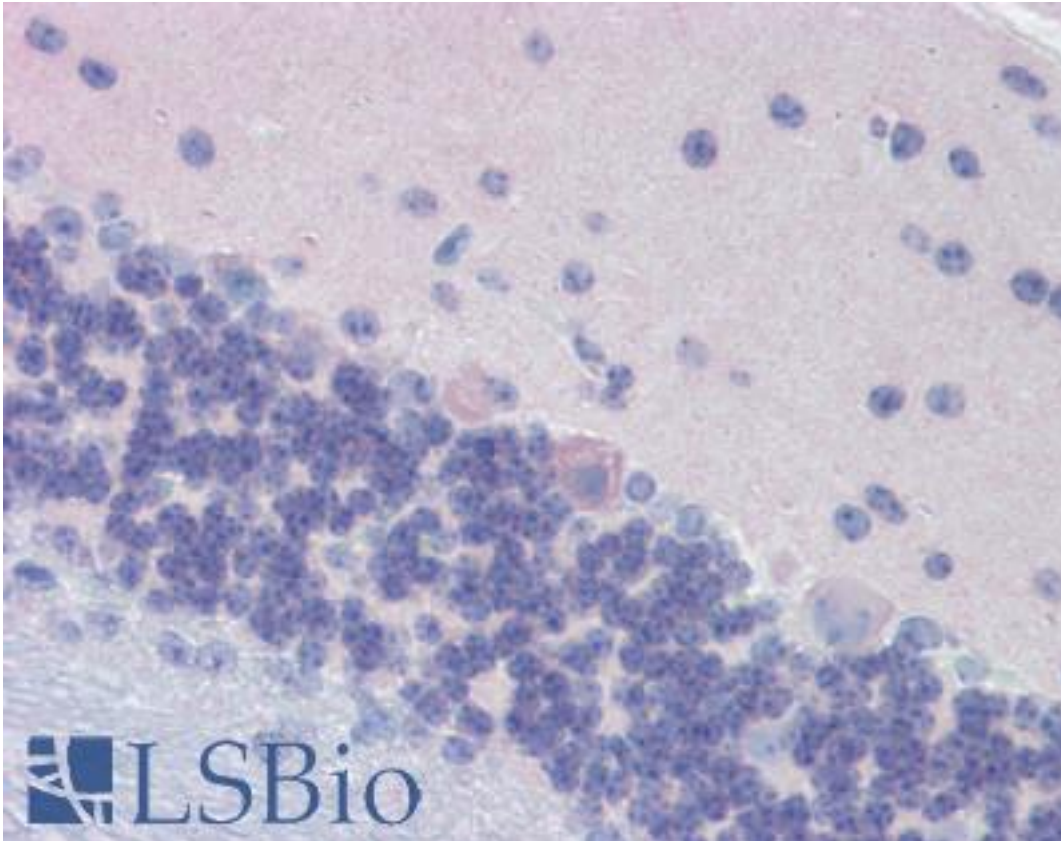
<b>CatalogID:</b>	LS-B3655
<b>Validation:</b>	This antibody replaces catalog number LS-C41953. It has been validated for use in the following assays: IHC-P.
<b>Target:</b>	guanine nucleotide binding protein (G protein), alpha activating activity polypeptide O (GNAO1)
<b>Synonyms:</b>	GNAO1 Antibody, GNAO Antibody, G-ALPHA-o Antibody, G0 Protein Alpha Antibody
<b>Host</b>	GNAO1 antibody was produced in Rabbit
<b>Clonality:</b>	Polyclonal
<b>Isotype:</b>	IgG
<b>Immunogen Species:</b>	GNAO1 antibody was raised against Mouse
<b>Antigen Type:</b>	Synthetic peptide
<b>Immunogen:</b>	GNAO1 antibody was raised against synthetic peptide from mouse GNAO1 / GNAO.
<b>Specificity:</b>	Synthetic peptide corresponding to the amino acids 345 - 354 of the native molecule conjugated to Keyhole Limpet Hemocyanin.
<b>Epitope:</b>	aa345-354
<b>Reactivity:</b>	Mouse, Drosophila
<b>Purification:</b>	Ammonium sulfate precipitation
<b>Presentation:</b>	PBS, 0.09% sodium azide.
<b>Recommended Storage:</b>	+4°C or -20°C, Avoid repeated freezing and thawing.
<b>Usage Summary:</b>	Immunohistochemistry: LS-B3655 was validated for use in immunohistochemistry on a panel of formalin-fixed, paraffin-embedded (FFPE) mouse tissues after heat induced antigen retrieval in pH 6.0 citrate buffer. After incubation with the primary antibody, slides were incubated with biotinylated secondary antibody, followed by alkaline phosphatase-streptavidin and chromogen. The stained slides were evaluated by a pathologist to confirm staining specificity. The optimal working concentration for LS-B3655 was determined to be 10 ug/ml. Western Blot: This antibody detects band at 39 kD when used under reducing conditions against rat brain.
<b>Uses:</b>	IHC - Paraffin (10 µg/ml), Western blot, ELISA (1:500 - 1:1000) (Optimal dilution to be determined by the researcher)
<b>Size:</b>	250 µl
<b>Concentration:</b>	5 mg/ml

**Immunohistochemistry Image:**



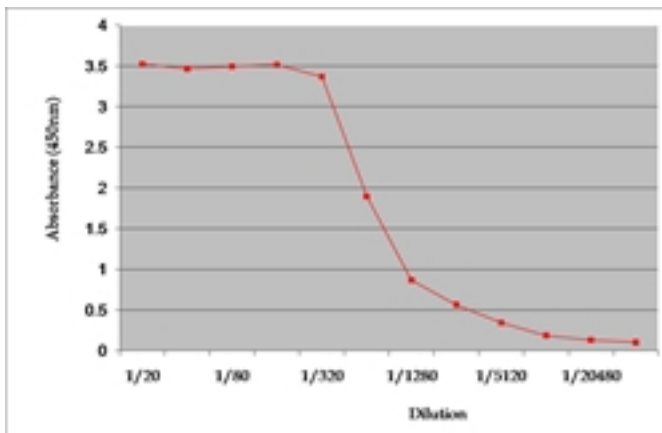
Anti-GNAO1 antibody IHC of mouse brain, cortex. Immunohistochemistry of formalin-fixed, paraffin-embedded tissue after heat-induced antigen retrieval. Antibody LS-B3655 concentration 10 ug/ml.

**Immunohistochemistry Image:**



Anti-GNAO1 antibody IHC of mouse brain, cerebellum. Immunohistochemistry of formalin-fixed, paraffin-embedded tissue after heat-induced antigen retrieval. Antibody LS-B3655 concentration 10 ug/ml.

**ELISA Image:**



Synthetic G Protein Alpha 0 detected with Rabbit anti-Mouse G Protein Alpha 0 (LS-B3655).

**Requested From:**

Japan

Laboratory Reagent For In Vitro Research Use Only

Not for resale without prior written consent from LifeSpan BioSciences, Inc.

Created on 9/23/2014

© 2014 LifeSpan BioSciences