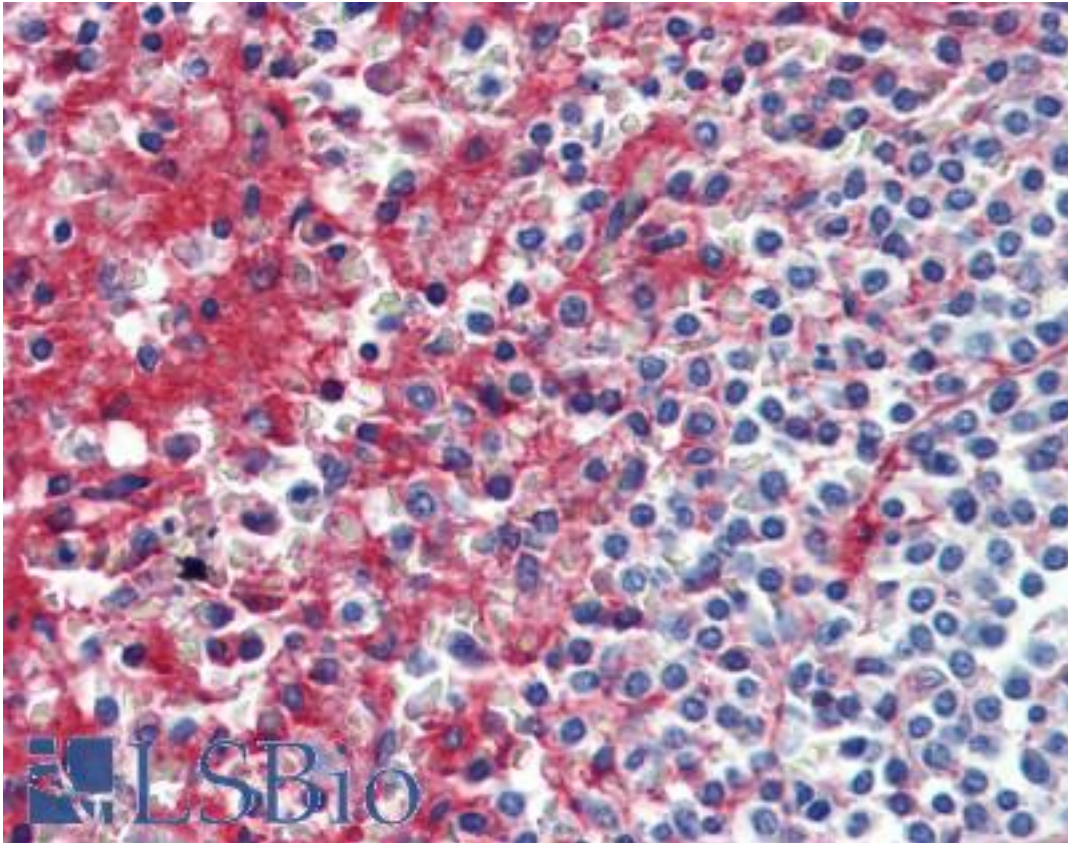


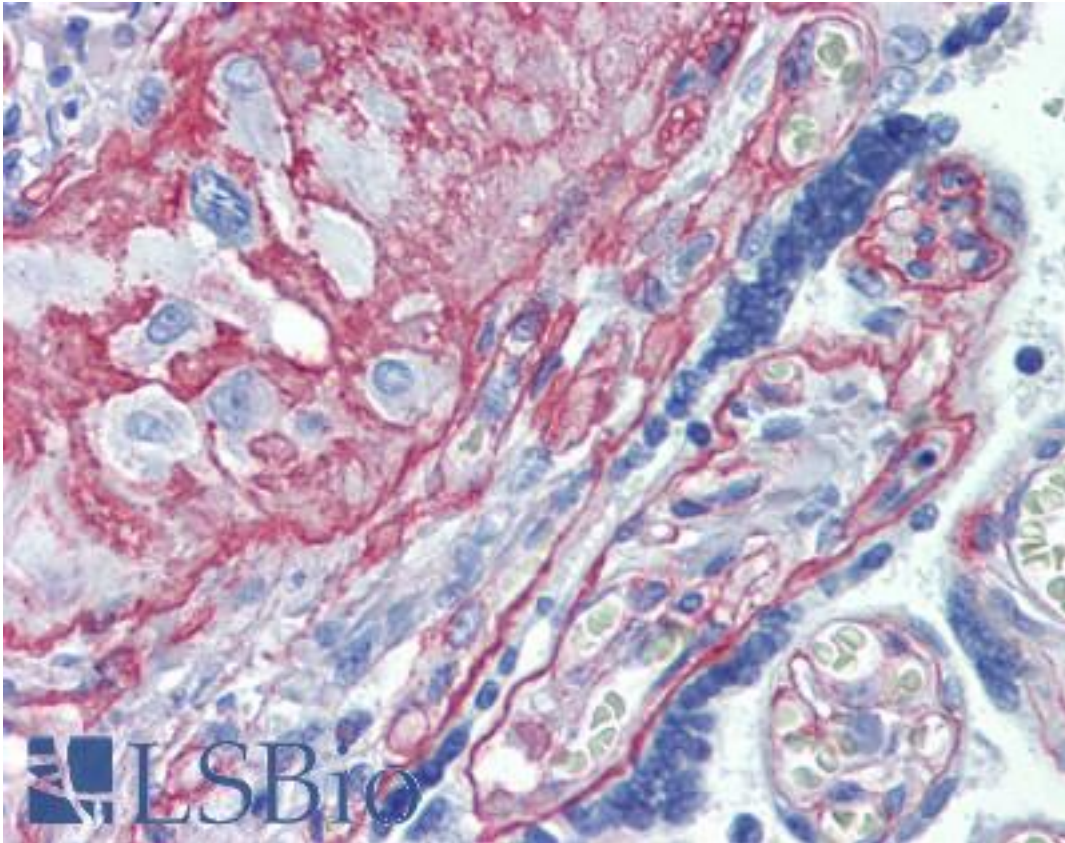
Collagen IV Rabbit anti-Human Polyclonal Antibody - LS-B3654 - LSBio	
<b>CatalogID:</b>	LS-B3654
<b>Validation:</b>	This antibody replaces catalog number LS-C79589. It has been validated for use in the following assays: IHC-P.
<b>Target:</b>	Collagen IV
<b>Host</b>	Collagen IV antibody was produced in Rabbit
<b>Clonality:</b>	Polyclonal
<b>Isotype:</b>	IgG
<b>Immunogen Species:</b>	Collagen IV antibody was raised against Human
<b>Antigen Type:</b>	Purified protein
<b>Immunogen:</b>	Collagen IV antibody was raised against human placental collagen type IV.
<b>Specificity:</b>	Human Type IV collagen. Cross-reactivity: Human collagen type I: 1% Human collagen type II: <0.5%, Human collagen type III: <0.5%, Human collagen type IV: 100%, Human collagen type V: 7%, Human fibronectin: <0.5%, Human albumin: <0.5%, Human immunoglobulin <0.5%.
<b>Reactivity:</b>	Human
<b>Purification:</b>	Affinity purified
<b>Presentation:</b>	PBS, mannitol, dextran, no preservatives.
<b>Recommended Storage:</b>	+4°C or -20°C, Avoid repeated freezing and thawing.
<b>Usage Summary:</b>	Immunohistochemistry: LS-B3654 was validated for use in immunohistochemistry on a panel of 21 formalin-fixed, paraffin-embedded (FFPE) human tissues after heat induced antigen retrieval in pH 6.0 citrate buffer. After incubation with the primary antibody, slides were incubated with biotinylated secondary antibody, followed by alkaline phosphatase-streptavidin and chromogen. The stained slides were evaluated by a pathologist to confirm staining specificity. The optimal working dilution for LS-B3654 was determined to be 1:100. Suitable for use in ELISA, Indirect immunofluorescence, indirect immunohistochemistry and Dot Blotting (not suitable for Western Blot). ELISA: 1:3000. Indirect immunofluorescent visualization of collagen type IV on cryostat sections of human tissue: 1:20-1:40. Indirect Immunohistochemistry: 1:20-1:40. fresh frozen or acetone fixed specimens. Dot Blotting: 1:300. not recommended for Western Blots.
<b>Uses:</b>	IHC - Paraffin (1:100), IHC - Frozen, Immunofluorescence, ELISA (1:3000) (Optimal dilution to be determined by the researcher)
<b>Uses Not Recommended:</b>	Western blot
<b>Size:</b>	25 µg
<b>Concentration:</b>	0.1 mg/ml

**Immunohistochemistry Image:**



Anti-Collagen IV antibody IHC of human spleen. Immunohistochemistry of formalin-fixed, paraffin-embedded tissue after heat-induced antigen retrieval. Antibody LS-B3654 dilution 1:100.

**Immunohistochemistry Image:**



Anti-Collagen IV antibody IHC of human placenta. Immunohistochemistry of formalin-fixed, paraffin-embedded tissue after heat-induced antigen retrieval. Antibody LS-B3654 dilution 1:100.

**Requested From:**

Japan

Laboratory Reagent For In Vitro Research Use Only

Not for resale without prior written consent from LifeSpan BioSciences, Inc.

Created on 9/23/2014

© 2014 LifeSpan BioSciences