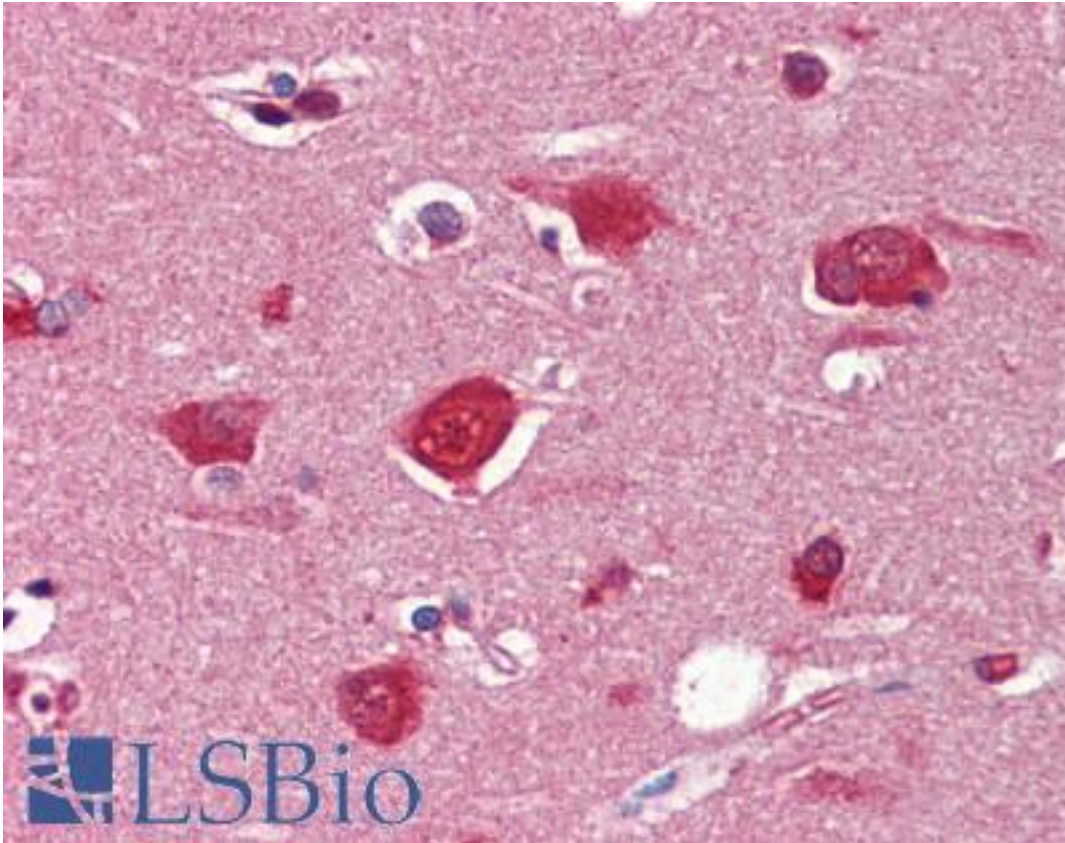


Collagen I Rabbit anti-Human Polyclonal Antibody - LS-B3653 - LSBio

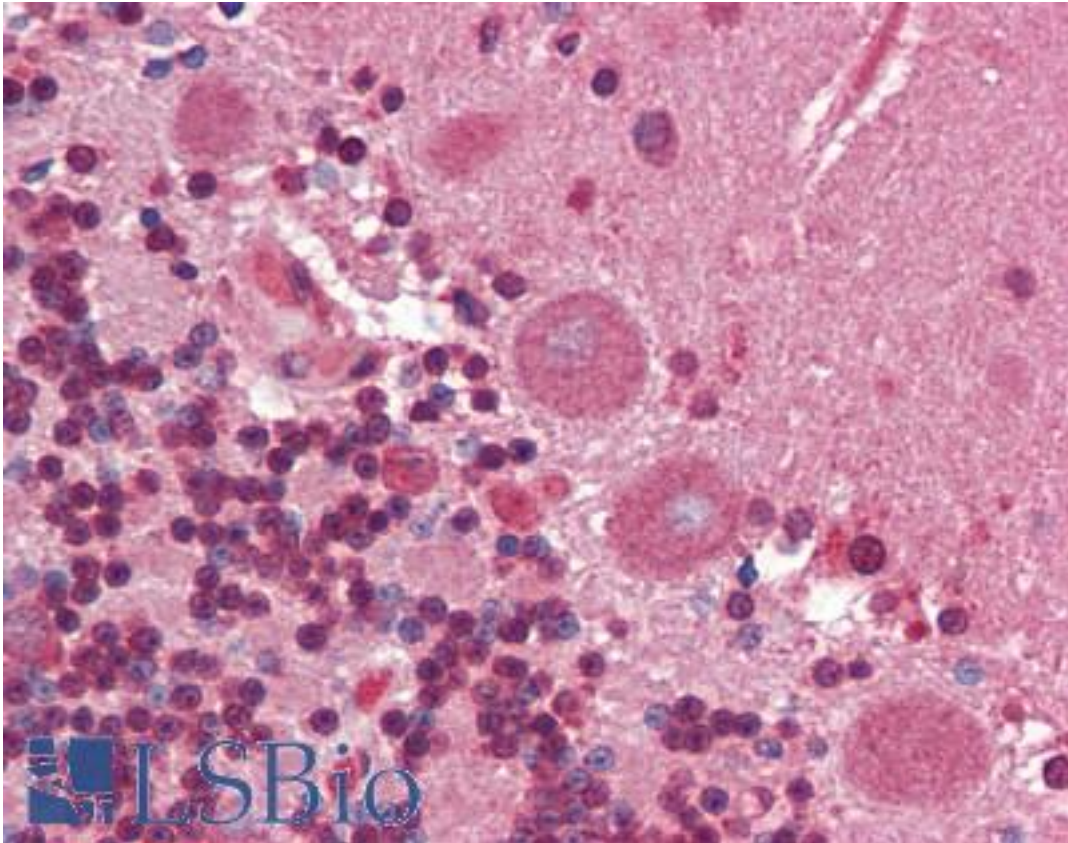
CatalogID:	LS-B3653
Validation:	This antibody replaces catalog number LS-C79515. It has been validated for use in the following assays: IHC-P.
Target:	Collagen I
Host	Collagen I antibody was produced in Rabbit
Clonality:	Polyclonal
Isotype:	IgG
Immunogen Species:	Collagen I antibody was raised against Human
Antigen Type:	Purified protein
Immunogen:	Collagen I antibody was raised against human placental collagen Type I.
Specificity:	Human collagen type. Cross-reactivity: Human collagen type I: 100%, Human collagen type II: <0.5%, Human collagen type III: < 25%, Human collagen type IV: <0.5%, Human collagen type V: <0.5%, Human fibronectin: <0.5%, Human albumin: <0.5%, Human immunoglobulin: <0.5%.
Reactivity:	Human
Purification:	Ammonium sulfate precipitation
Presentation:	0.15 M sodium chloride, 10 mM sodium phosphate, pH 7.5, 0.1% Mannitol, 0.1% Dextran as stabilizers. No preservative.
Recommended Storage:	+4°C or -20°C, Avoid repeated freezing and thawing.
Usage Summary:	Immunohistochemistry: LS-B3653 was validated for use in immunohistochemistry on a panel of 21 formalin-fixed, paraffin-embedded (FFPE) human tissues after heat induced antigen retrieval in pH 6.0 citrate buffer. After incubation with the primary antibody, slides were incubated with biotinylated secondary antibody, followed by alkaline phosphatase-streptavidin and chromogen. The stained slides were evaluated by a pathologist to confirm staining specificity. The optimal working dilution for LS-B3653 was determined to be 1:100. ELISA on human collagen type I: 1:4000. Indirect microimmunofluorescent visualization of collagen type I on cryostat sections of human tissue: 1:10-1:40.
Uses:	IHC - Paraffin (1:100), Immunofluorescence, ELISA (Optimal dilution to be determined by the researcher)
Uses Not Recommended:	Western blot
Size:	125 µl

Immunohistochemistry Image:



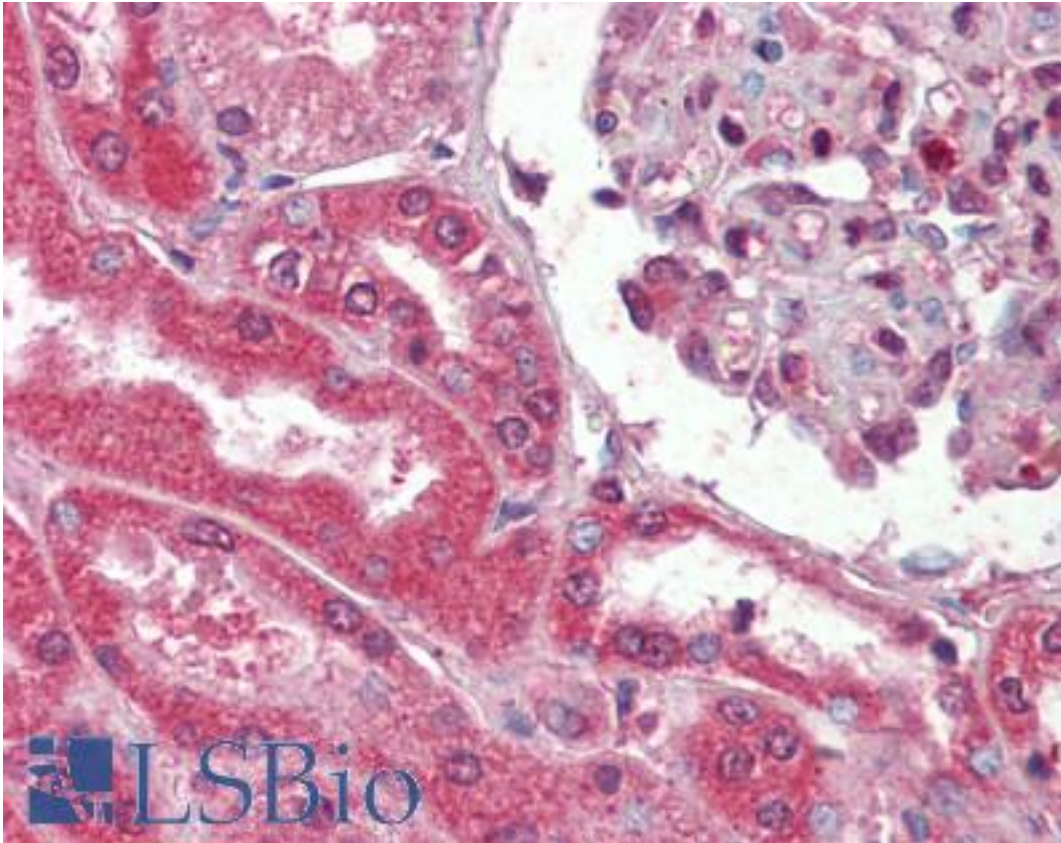
Anti-Collagen I antibody IHC of human brain, cortex. Immunohistochemistry of formalin-fixed, paraffin-embedded tissue after heat-induced antigen retrieval. Antibody LS-B3653 dilution 1:100.

Immunohistochemistry Image:



Anti-Collagen I antibody IHC of human brain, cerebellum. Immunohistochemistry of formalin-fixed, paraffin-embedded tissue after heat-induced antigen retrieval. Antibody LS-B3653 dilution 1:100.

Immunohistochemistry Image:



Anti-Collagen I antibody IHC of human kidney. Immunohistochemistry of formalin-fixed, paraffin-embedded tissue after heat-induced antigen retrieval. Antibody LS-B3653 dilution 1:100.

Requested From:

Japan

Laboratory Reagent For In Vitro Research Use Only

Not for resale without prior written consent from LifeSpan BioSciences, Inc.

Created on 9/23/2014

© 2014 LifeSpan BioSciences