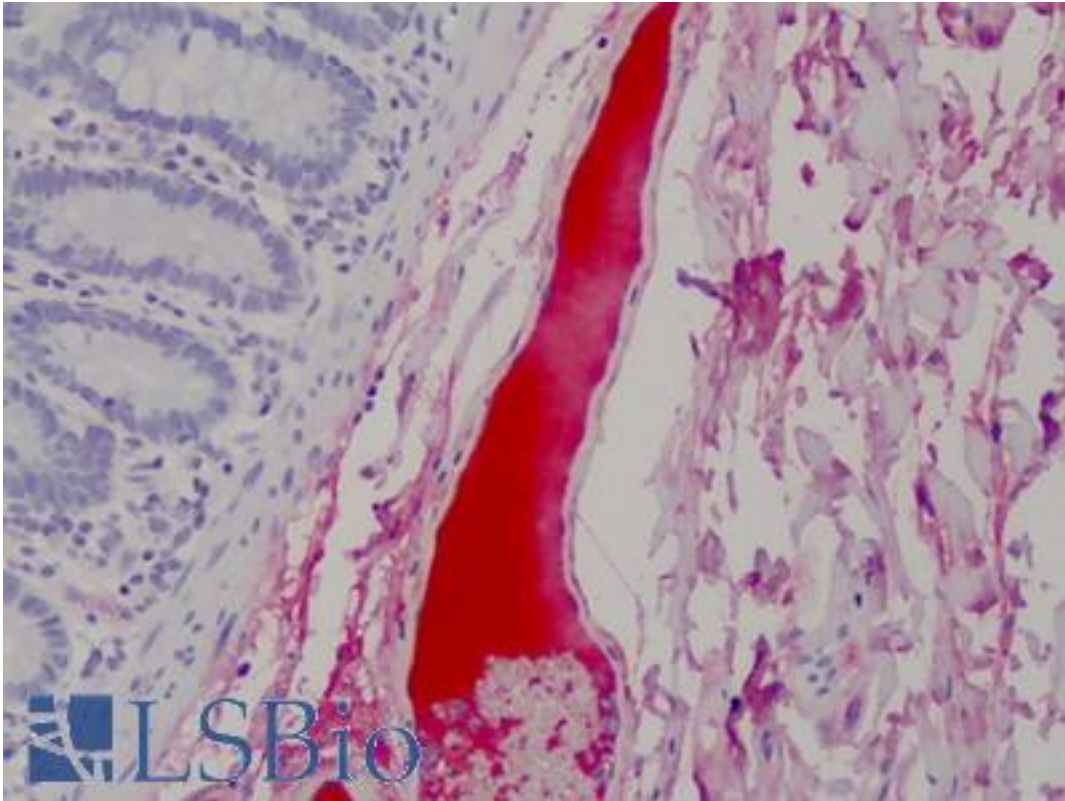


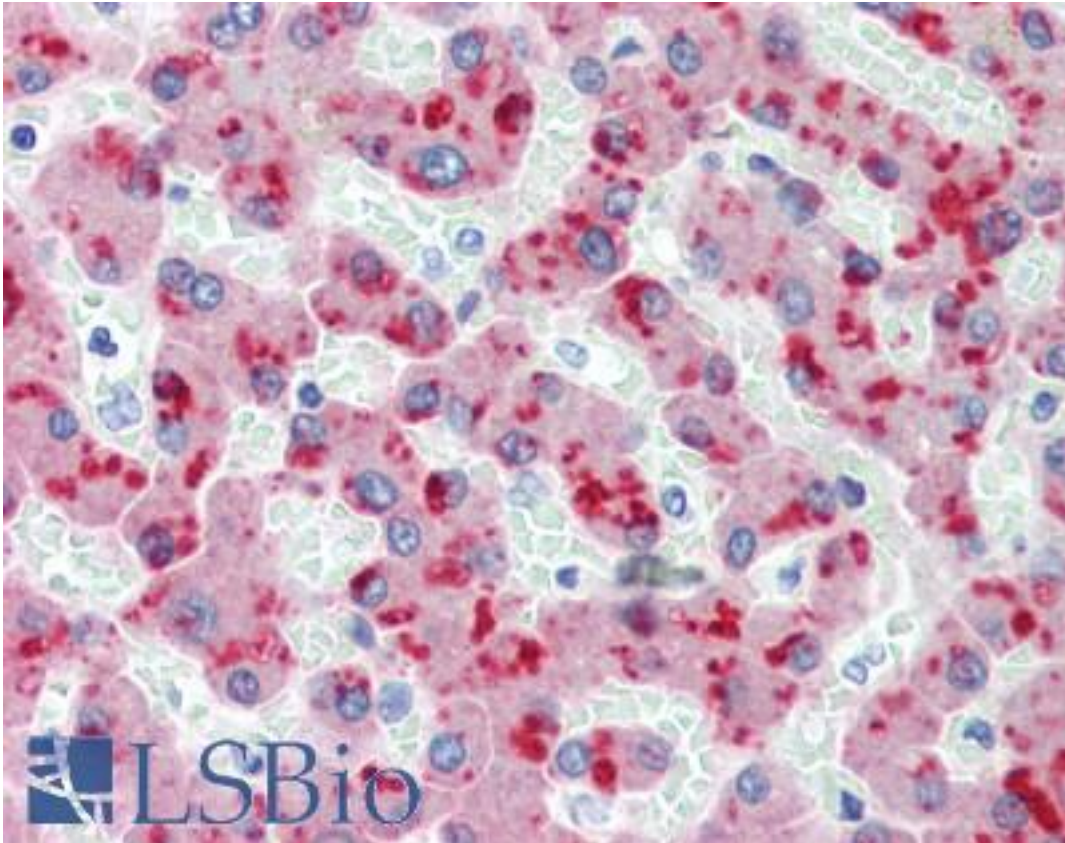
CFH / Complement Factor H Mouse anti-Human Monoclonal (OX-24) Antibody - LS-B3648 - LSBio	
CatalogID:	LS-B3648
Validation:	This antibody replaces catalog number LS-C45170. It has been validated for use in the following assays: IHC-P.
Target:	complement factor H (CFH)
Synonyms:	CFH Antibody, Adrenomedullin binding protein Antibody, AHUS1 Antibody, AMBP1 Antibody, ARMS1 Antibody, ARMD4 Antibody, Beta-1-H-globulin Antibody, Factor H Antibody, Factor H-like 1 Antibody, HF Antibody, HF2 Antibody, H factor 1 Antibody, H factor 2 (complement) Antibody, HUS Antibody, HF1 Antibody, Beta-1H Antibody, CFHL3 Antibody, Complement factor H Antibody, H factor 1 (complement) Antibody
Host	CFH antibody was produced in Mouse
Clonality:	Monoclonal
Isotype:	IgG1
Clone Name:	OX-24
Immunogen Species:	CFH / Complement Factor H antibody was raised against Human
Antigen Type:	Purified protein
Immunogen:	CFH / Complement Factor H antibody was raised against human complement factor H.
Specificity:	Recognizes the human serum complement protein factor H (155kD), binding to a different epitope from MRC OX23. The Recognizes a 43-49kD truncated form of factor H present at low level (1-5 ug/ml) in plasma and urine. In an immunoprecipitation system. Recognizes factor H in other primates, but not in cow, sheep, pig, chicken or rabbit sera. This antibody inhibits the binding of factor H to surface bound C3b, Recognizes Factor H in Western blotting procedures.
Reactivity:	Human
Purification:	Protein G purified
Presentation:	0.09% sodium azide.
Recommended Storage:	Long term: -20°C; Short term: +4°C. Avoid repeat freeze-thaw cycles.
Usage Summary:	Immunohistochemistry: LS-B3648 was validated for use in immunohistochemistry on a panel of 21 formalin-fixed, paraffin-embedded (FFPE) human tissues after heat induced antigen retrieval in pH 6.0 citrate buffer. After incubation with the primary antibody, slides were incubated with biotinylated secondary antibody, followed by alkaline phosphatase-streptavidin and chromogen. The stained slides were evaluated by a pathologist to confirm staining specificity. The optimal working concentration for LS-B3648 was determined to be 10 ug/ml.
Uses:	IHC - Paraffin (10 µg/ml), Western blot, Immunoprecipitation, ELISA (Optimal dilution to be determined by the researcher)
Uses Not Recommended:	Flow Cytometry
Size:	50 µg
Concentration:	1 mg/ml

Immunohistochemistry Image:



Anti-Factor H antibody IHC of human blood plasma. Immunohistochemistry of formalin-fixed, paraffin-embedded tissue after heat-induced antigen retrieval. Antibody LS-B3648 concentration 10 ug/ml.

Immunohistochemistry Image:



Anti-Factor H antibody IHC of human liver. Immunohistochemistry of formalin-fixed, paraffin-embedded tissue after heat-induced antigen retrieval. Antibody LS-B3648 concentration 10 ug/ml.

Requested From:

Japan

Laboratory Reagent For In Vitro Research Use Only

Not for resale without prior written consent from LifeSpan BioSciences, Inc.

Created on 9/23/2014

© 2014 LifeSpan BioSciences