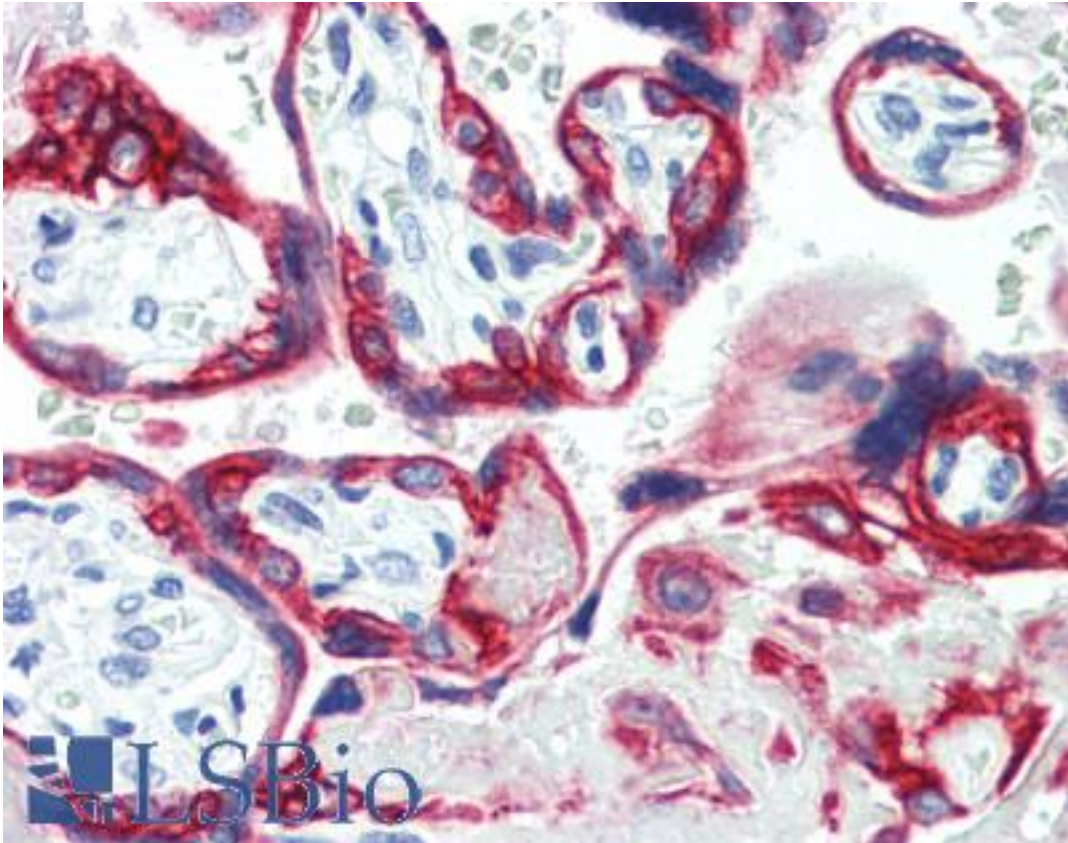


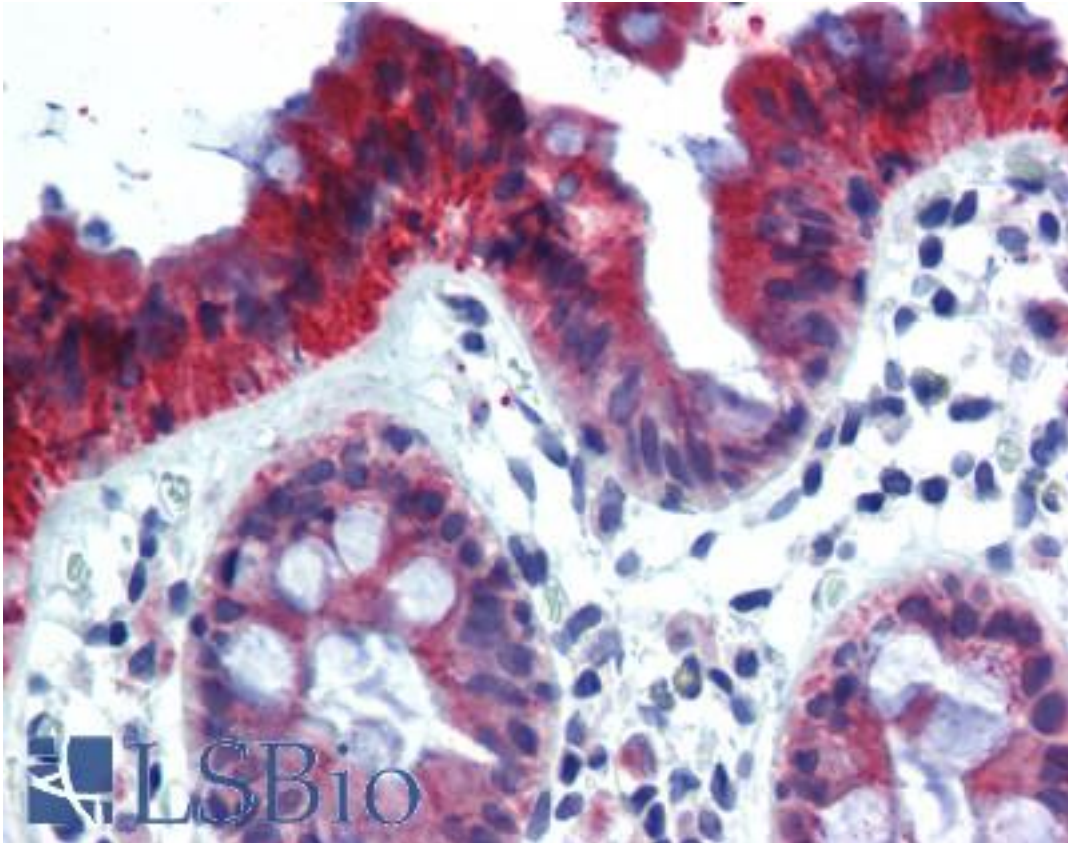
KRT18 / CK18 / Cytokeratin 18 Mouse anti-Human Monoclonal (FITC) (Ks 18.04) Antibody - LS-B3647 - LSBio	
CatalogID:	LS-B3647
Validation:	This antibody replaces catalog number LS-C86754. It has been validated for use in the following assays: IHC-P.
Target:	keratin 18 (KRT18)
Synonyms:	KRT18 Antibody, CK-18 Antibody, Cytokeratin 18 Antibody, Cytokeratin-18 Antibody, K18 Antibody, Keratin 18 Antibody, CYK18 Antibody, Keratin-18 Antibody
Family / Subfamily:	Keratin / not assigned-Keratin
Host	KRT18 antibody was produced in Mouse
Clonality:	Monoclonal
Isotype:	IgG1
Clone Name:	Ks 18.04
Conjugations:	Fluorescein (FITC)
Immunogen Species:	KRT18 / CK18 / Cytokeratin 18 antibody was raised against Human
Antigen Type:	Purified protein
Immunogen:	KRT18 / CK18 / Cytokeratin 18 antibody was raised against human cytokeratin 18 from HeLa cytoskeletal preparation.
Specificity:	Reacts on cultured lines HeLa and MCf-7. Polypeptide reacting: Mr 45,000 polypeptide of all simple type epithelial and basal cells of many squamous, nonepidermal epithelia.
Reactivity:	Human, Mouse, Rat, Bovine, Dog, Hamster, Pig, Sheep
Purification:	Protein A purified
Presentation:	Liquid, 0.09% sodium azide.
Recommended Storage:	Store at 4°C for short term applications. For long term storage, aliquot and store at -20°C.
Usage Summary:	Immunohistochemistry: LS-B3647 was validated for use in immunohistochemistry on a panel of 21 formalin-fixed, paraffin-embedded (FFPE) human tissues after heat induced antigen retrieval in pH 6.0 citrate buffer. After incubation with the primary antibody, slides were incubated with biotinylated secondary antibody, followed by alkaline phosphatase-streptavidin and chromogen. The stained slides were evaluated by a pathologist to confirm staining specificity. The optimal working dilution for LS-B3647 was determined to be 1:10.
Uses:	IHC - Paraffin (1:10), IHC - Frozen, Flow Cytometry (Optimal dilution to be determined by the researcher)
Size:	50 µl

Immunohistochemistry Image:



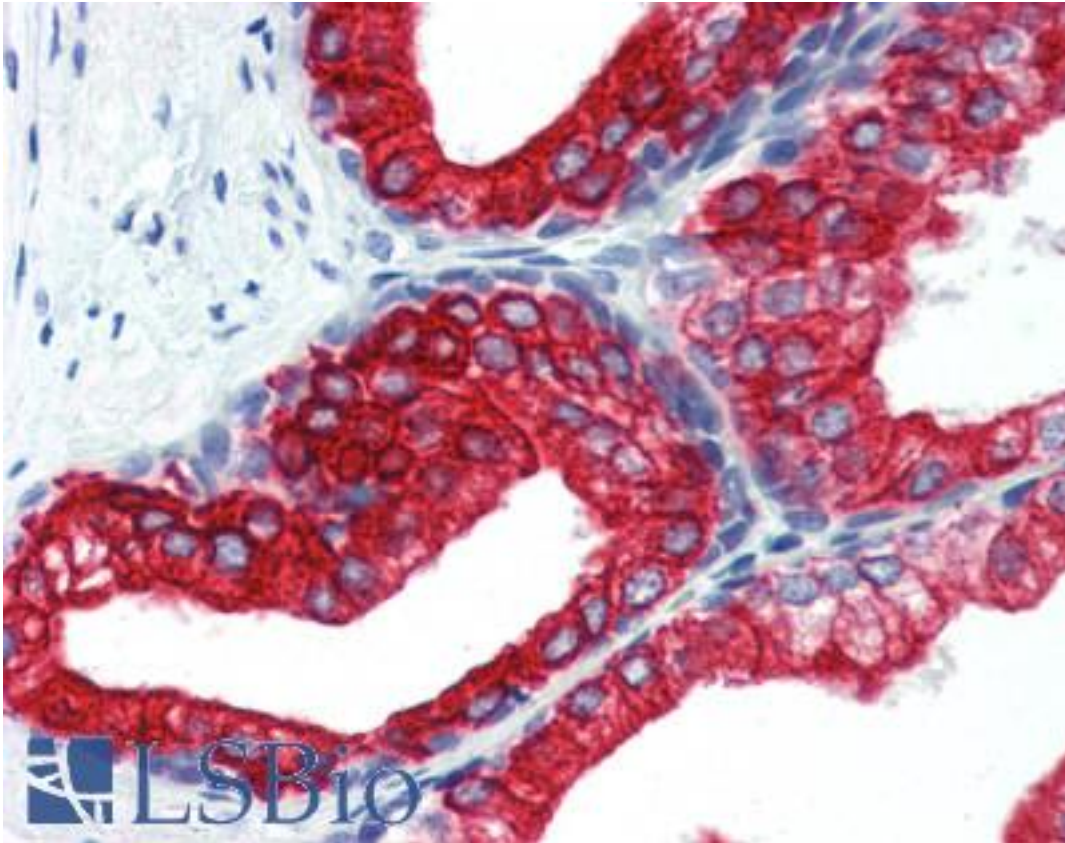
Anti-KRT18 / Cytokeratin 18 antibody IHC of human placenta. Immunohistochemistry of formalin-fixed, paraffin-embedded tissue after heat-induced antigen retrieval. Antibody LS-B3647 dilution 1:10.

Immunohistochemistry Image:



Anti-KRT18 / Cytokeratin 18 antibody IHC of human colon. Immunohistochemistry of formalin-fixed, paraffin-embedded tissue after heat-induced antigen retrieval. Antibody LS-B3647 dilution 1:10.

Immunohistochemistry Image:



Anti-KRT18 / Cytokeratin 18 antibody IHC of human prostate. Immunohistochemistry of formalin-fixed, paraffin-embedded tissue after heat-induced antigen retrieval. Antibody LS-B3647 dilution 1:10.

Requested From:

Japan

Laboratory Reagent For In Vitro Research Use Only

Not for resale without prior written consent from LifeSpan BioSciences, Inc.

Created on 9/23/2014

© 2014 LifeSpan BioSciences