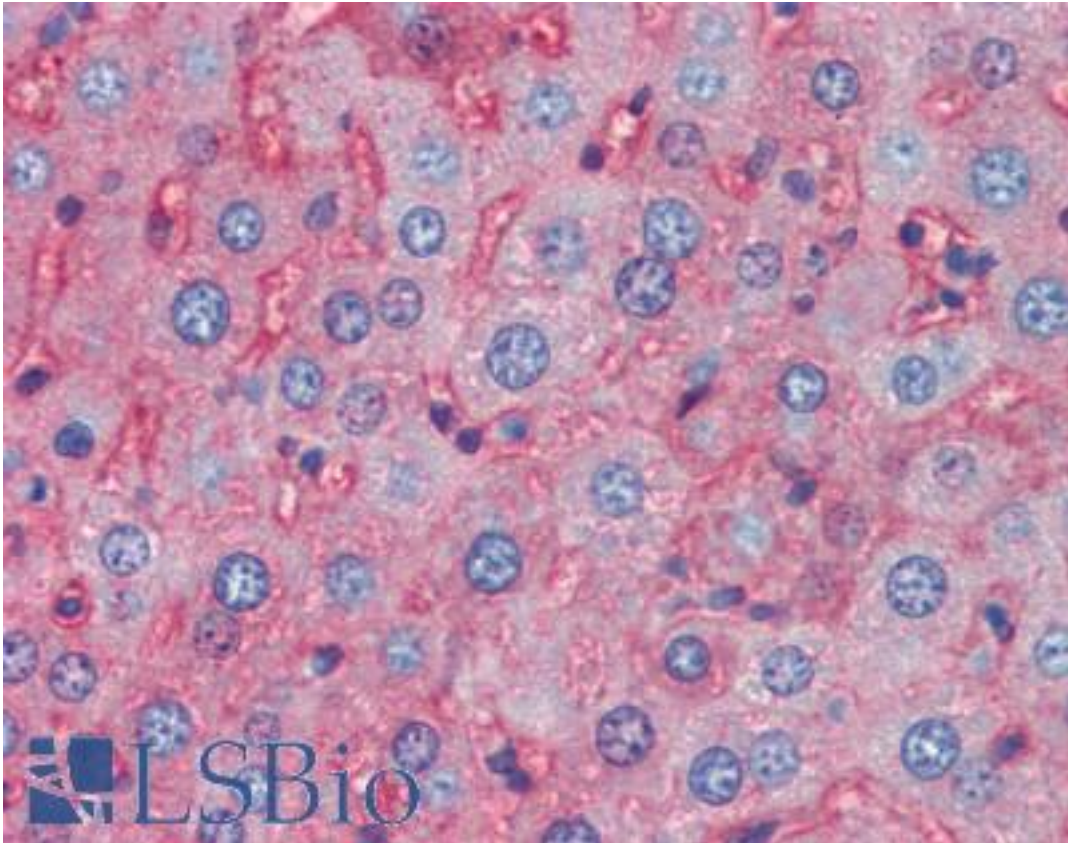


APOA1 / Apolipoprotein A 1 Goat anti-Mouse Polyclonal Antibody - LS-B3641 - LSBio

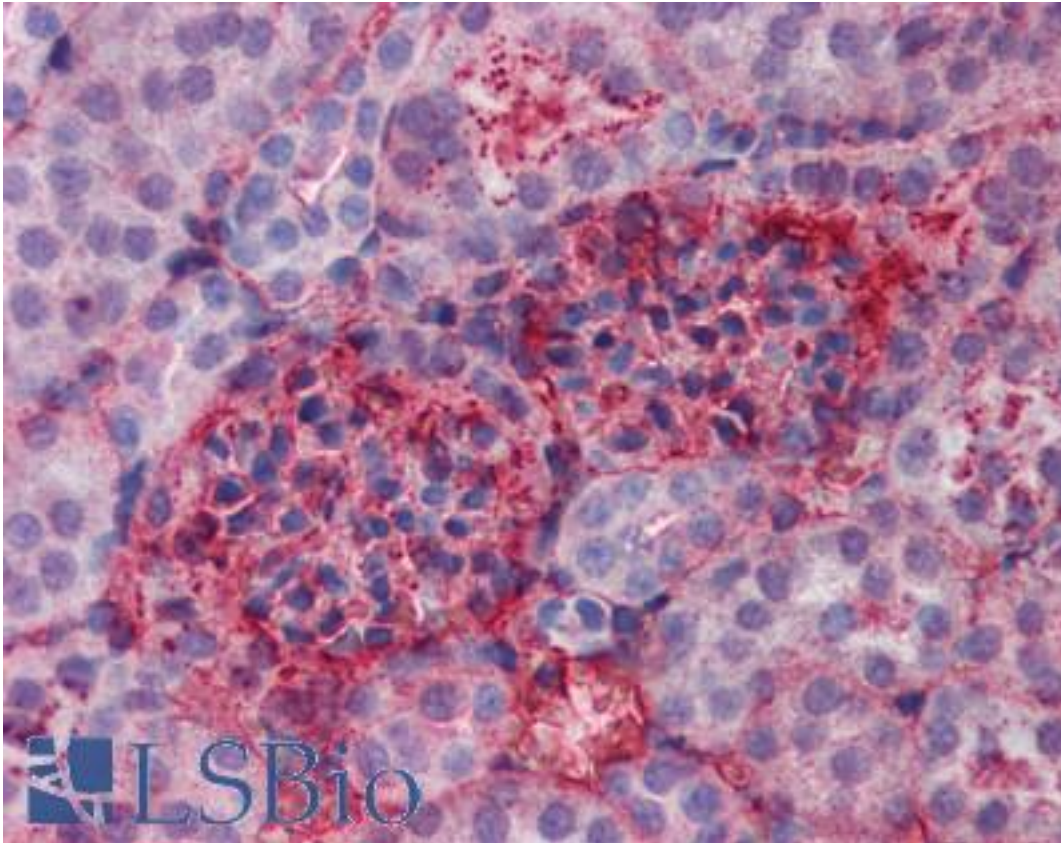
CatalogID:	LS-B3641
Validation:	This antibody replaces catalog number LS-C60061. It has been validated for use in the following assays: IHC-P.
Target:	apolipoprotein A-I (APOA1)
Synonyms:	APOA1 Antibody, ApoA-I Antibody, APOAI Antibody, Apolipoprotein A-I Antibody, Apolipoprotein A1 Antibody, Apo-AI Antibody
Host	APOA1 antibody was produced in Goat
Clonality:	Polyclonal
Immunogen Species:	APOA1 / Apolipoprotein A 1 antibody was raised against Mouse
Immunogen:	APOA1 / Apolipoprotein A 1 antibody was raised against apolipoprotein Type A-I was isolated from mouse plasma by density gradient centrifugation followed by HPLC purification.
Specificity:	Typically less than 1% cross-reactivity against other types of apoLipoprotein was detected by ELISA against purified standards. This antibody reacts with mouse apoLipoprotein A-I and has negligible cross-reactivity with Type A-II, B, C-I, C-II, C-III, E and J apoLipoproteins. Specific cross-reaction of anti-apoLipoprotein antibodies with antigens from other species has not been determined. Non-specific cross-reaction of anti-apoLipoprotein antibodies with other mouse serum proteins is negligible
Reactivity:	Mouse
Purification:	Affinity purified
Presentation:	0.125 M sodium borate, 0.075 M sodium chloride, 0.005 M EDTA, pH 8.0, 0.01% sodium azide. For extended storage, mix, an equal volume of glycerol.
Recommended Storage:	+4°C or -20°C, Avoid repeated freezing and thawing.
Usage Summary:	Immunohistochemistry: LS-B3641 was validated for use in immunohistochemistry on a panel formalin-fixed, paraffin-embedded (FFPE) mouse tissues after heat induced antigen retrieval in pH 6.0 citrate buffer. After incubation with the primary antibody, slides were incubated with biotinylated secondary antibody, followed by alkaline phosphatase-streptavidin and chromogen. The stained slides were evaluated by a pathologist to confirm staining specificity. The optimal working concentration for LS-B3641 was determined to be 5 ug/ml. Anti-apoLipoprotein antibodies have been used for indirect trapping ELISA for quantitation of antigen in serum using a standard curve, for immunoprecipitation and for western blotting for highly sensitive qualitative analysis.
Uses:	IHC - Paraffin (5 µg/ml), Western blot (1:500 - 1:1000), Immunoprecipitation, ELISA (1:5000 - 1:10000) (Optimal dilution to be determined by the researcher)
Size:	50 µg
Concentration:	1 mg/ml

Immunohistochemistry Image:



Anti-Apolipoprotein A I antibody IHC of mouse liver. Immunohistochemistry of formalin-fixed, paraffin-embedded tissue after heat-induced antigen retrieval. Antibody LS-B3641 concentration 5 ug/ml.

Immunohistochemistry Image:



Anti-Apolipoprotein A I antibody IHC of mouse kidney. Immunohistochemistry of formalin-fixed, paraffin-embedded tissue after heat-induced antigen retrieval. Antibody LS-B3641 concentration 5 ug/ml.

Requested From:

Japan

Laboratory Reagent For In Vitro Research Use Only

Not for resale without prior written consent from LifeSpan BioSciences, Inc.

Created on 9/23/2014

© 2014 LifeSpan BioSciences