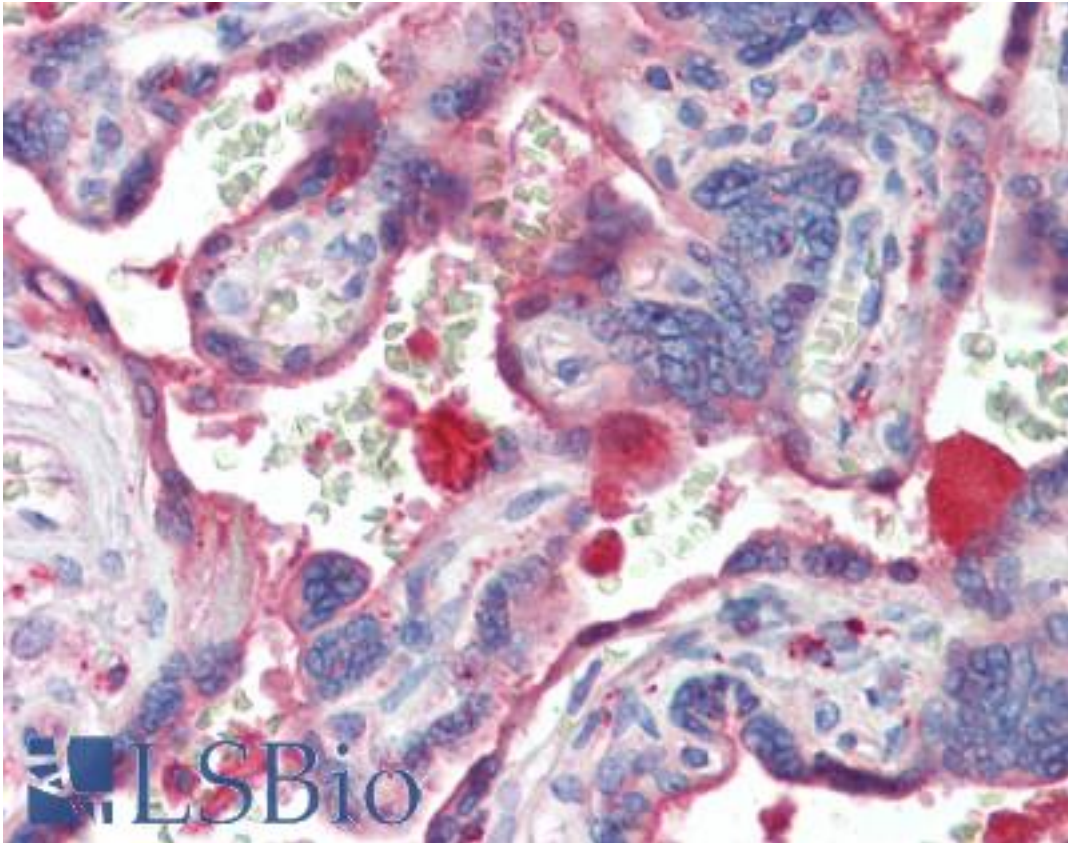


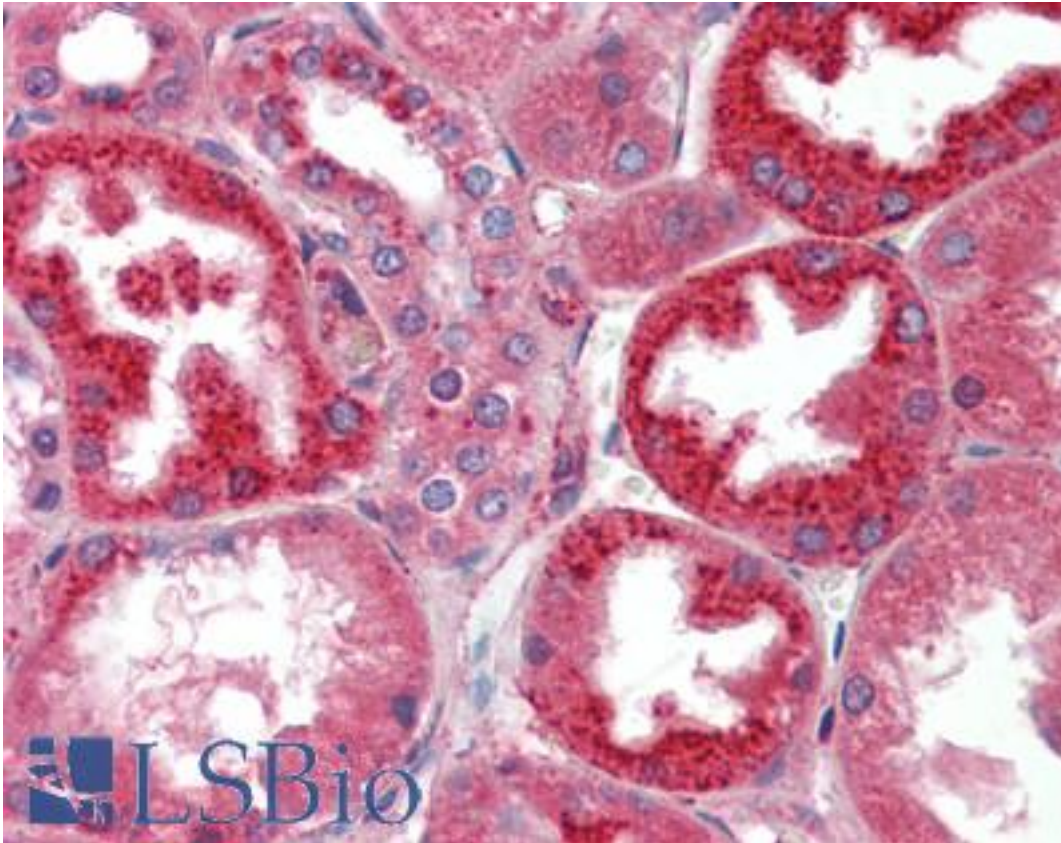
CTSL / Cathepsin L Rabbit anti-Rat Polyclonal Antibody - LS-B3637 - LSBio	
CatalogID:	LS-B3637
Validation:	This antibody replaces catalog number LS-C48664. It has been validated for use in the following assays: IHC-P.
Target:	cathepsin L (CTSL)
Synonyms:	CTSL Antibody, Cathepsin L Antibody, Cathepsin L1 Antibody, CATL Antibody, CTSL1 Antibody, Major excreted protein Antibody, MEP Antibody
Family / Subfamily:	Protease / Cysteine C1
Host	CTSL antibody was produced in Rabbit
Clonality:	Polyclonal
Immunogen Species:	CTSL / Cathepsin L antibody was raised against Rat
Antigen Type:	Synthetic peptide
Immunogen:	CTSL / Cathepsin L antibody was raised against synthetic peptide surrounding amino acid 223 of rat Cathepsin L.
Specificity:	The antibody recognizes the mature form of Cathepsin L (25 kD) from human, mouse and rat origins. Reactivity to other species has not been tested. Rat kidney tissue lysate can be used as a positive control.
Reactivity:	Rat, Human, Mouse
Purification:	Purified
Presentation:	PBS, 30% glycerol, 1% BSA, 0.02% Thimerosal.
Recommended Storage:	+4°C or -20°C, Avoid repeated freezing and thawing.
Usage Summary:	Immunohistochemistry: LS-B3637 was validated for use in immunohistochemistry on a panel of 21 formalin-fixed, paraffin-embedded (FFPE) human tissues after heat induced antigen retrieval in pH 6.0 citrate buffer. After incubation with the primary antibody, slides were incubated with biotinylated secondary antibody, followed by alkaline phosphatase-streptavidin and chromogen. The stained slides were evaluated by a pathologist to confirm staining specificity. The optimal working concentration for LS-B3637 was determined to be 5 ug/ml.
Uses:	IHC - Paraffin (5 µg/ml), Western blot (0.5 - 4 µg/ml) (Optimal dilution to be determined by the researcher)
Size:	50 µg
Concentration:	0.5 mg/ml

Immunohistochemistry Image:



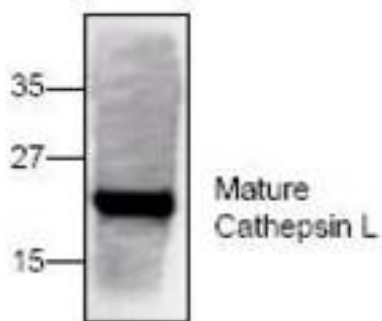
Anti-CTSL1 / Cathepsin L antibody IHC of human placenta. Immunohistochemistry of formalin-fixed, paraffin-embedded tissue after heat-induced antigen retrieval. Antibody LS-B3637 concentration 5 ug/ml.

Immunohistochemistry Image:



Anti-CTSL1 / Cathepsin L antibody IHC of human kidney. Immunohistochemistry of formalin-fixed, paraffin-embedded tissue after heat-induced antigen retrieval. Antibody LS-B3637 concentration 5 ug/ml.

Western Blot Image:



Western blot of Cathepsin L with rat kidney tissue lysate

Requested From:

Japan

Laboratory Reagent For In Vitro Research Use Only

Not for resale without prior written consent from LifeSpan BioSciences, Inc.

Created on 9/23/2014

© 2014 LifeSpan BioSciences