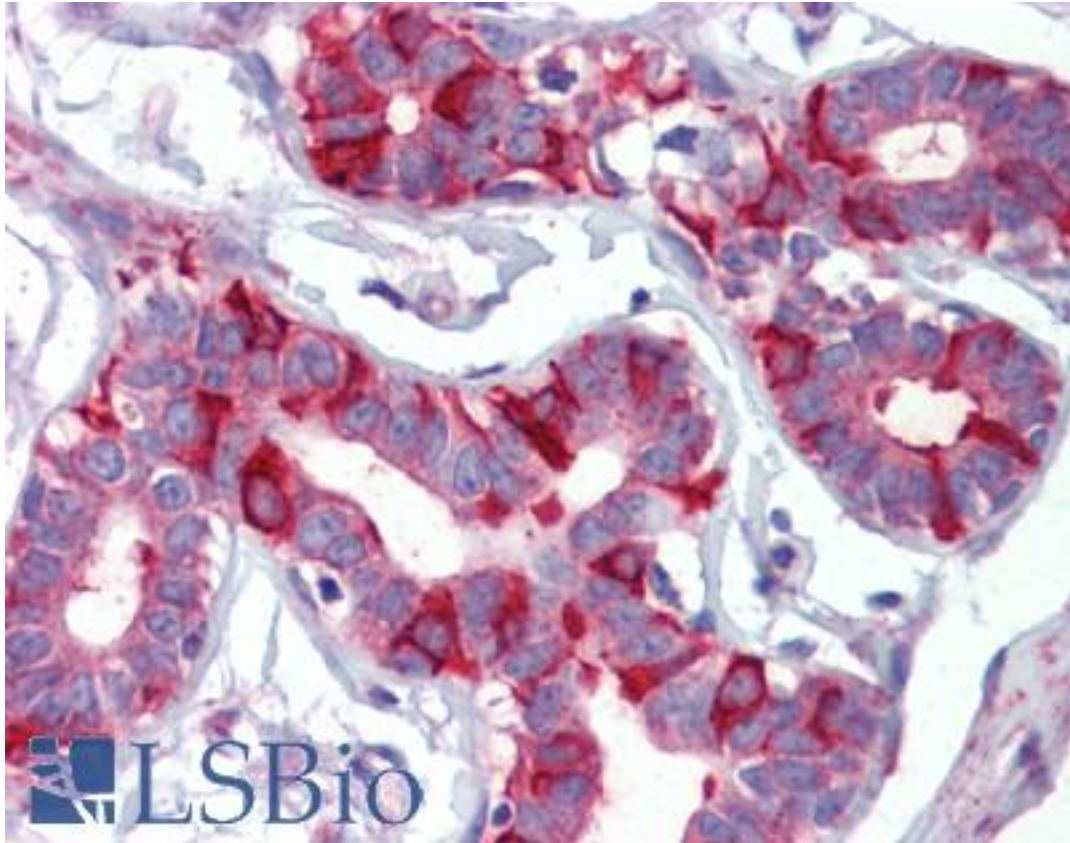


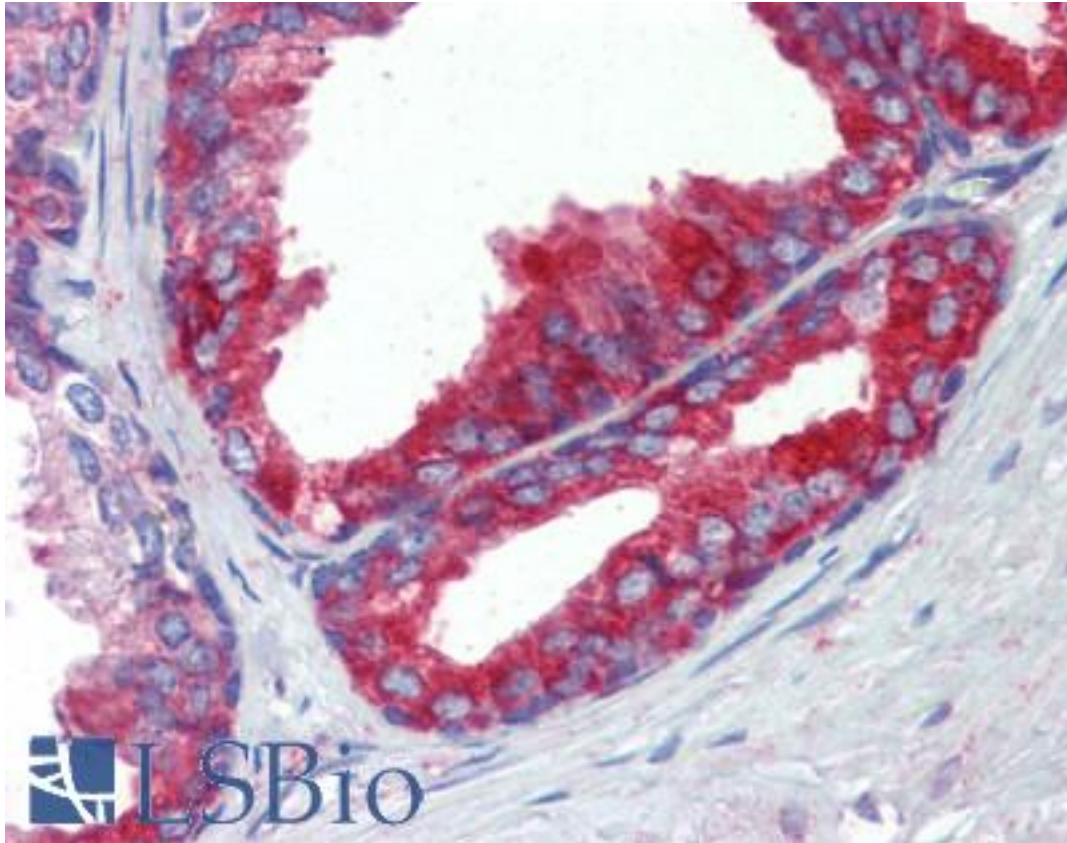
FASN / Fatty Acid Synthase Rabbit anti-Human Polyclonal (Internal) Antibody - LS-B3636 - LSBio	
<b>CatalogID:</b>	LS-B3636
<b>Validation:</b>	This antibody replaces catalog number LS-C100652. It has been validated for use in the following assays: IHC-P.
<b>Target:</b>	fatty acid synthase (FASN)
<b>Synonyms:</b>	FASN Antibody, Fatty acid synthase Antibody, OA-519 Antibody, SDR27X1 Antibody
<b>Host</b>	FASN antibody was produced in Rabbit
<b>Clonality:</b>	Polyclonal
<b>Immunogen Species:</b>	FASN / Fatty Acid Synthase antibody was raised against Human
<b>Antigen Type:</b>	Synthetic peptide
<b>Immunogen:</b>	FASN / Fatty Acid Synthase antibody was raised against kLH conjugated synthetic peptide selected from the Center region of human FASN.
<b>Epitope:</b>	Internal
<b>Reactivity:</b>	Human
<b>Purification:</b>	Ammonium sulfate precipitation
<b>Presentation:</b>	PBS, 0.09% sodium azide
<b>Recommended Storage:</b>	Maintain refrigerated at 2-8°C for up to 6 months. For long term storage store at -20°C.
<b>Usage Summary:</b>	Immunohistochemistry: LS-B3636 was validated for use in immunohistochemistry on a panel of 21 formalin-fixed, paraffin-embedded (FFPE) human tissues after heat induced antigen retrieval in pH 6.0 citrate buffer. After incubation with the primary antibody, slides were incubated with biotinylated secondary antibody, followed by alkaline phosphatase-streptavidin and chromogen. The stained slides were evaluated by a pathologist to confirm staining specificity. The optimal working concentration for LS-B3636 was determined to be 10 ug/ml.
<b>Uses:</b>	IHC - Paraffin (1:25 - 1:50), Immunofluorescence (1:10 - 1:50), Western blot (1:1000), Flow Cytometry (1:10 - 1:50) (Optimal dilution to be determined by the researcher)
<b>Size:</b>	200 µl

**Immunohistochemistry Image:**



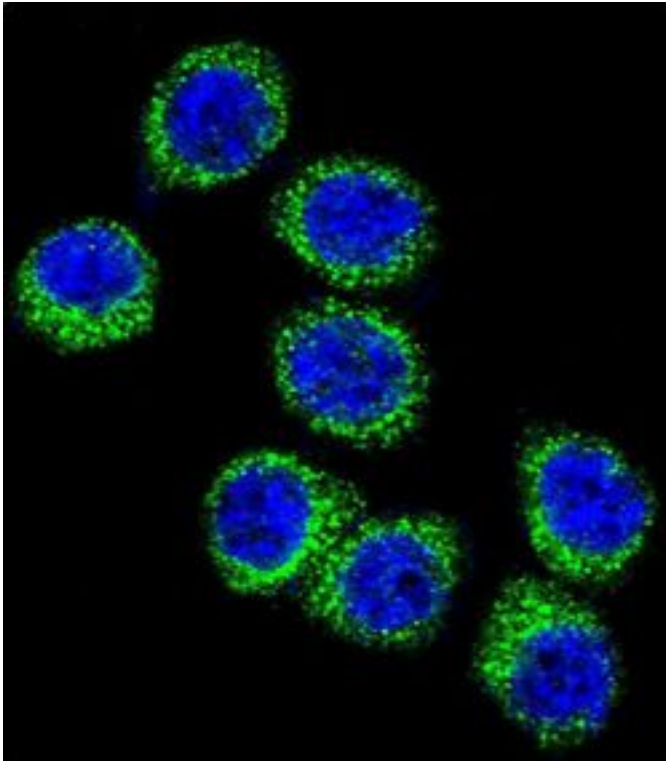
Anti-Fatty Acid Synthase antibody IHC of human breast. Immunohistochemistry of formalin-fixed, paraffin-embedded tissue after heat-induced antigen retrieval. Antibody LS-B3636 concentration 10 ug/ml.

**Immunohistochemistry Image:**



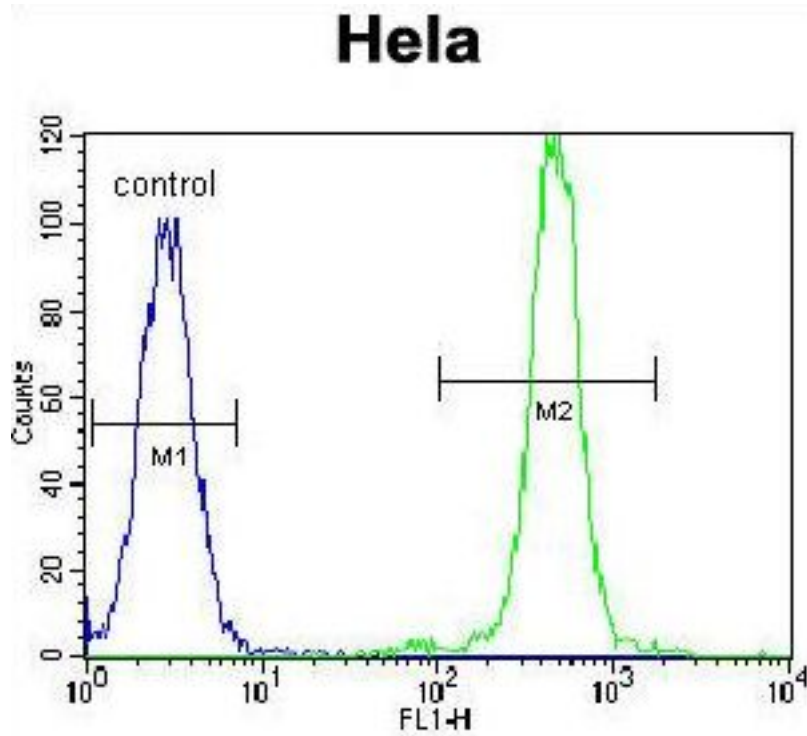
Anti-Fatty Acid Synthase antibody IHC of human prostate. Immunohistochemistry of formalin-fixed, paraffin-embedded tissue after heat-induced antigen retrieval. Antibody LS-B3636 concentration 10 ug/ml.

**Immunofluorescence Image:**



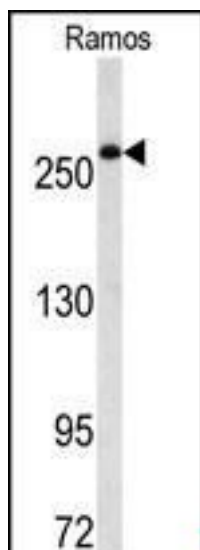
Confocal immunofluorescent analysis of FASN Antibody (Center) with HeLa cell followed by Alexa Fluor 488-conjugated goat anti-rabbit IgG (green). DAPI was used to stain the cell nuclear (blue).

**Flow Cytometry Image:**



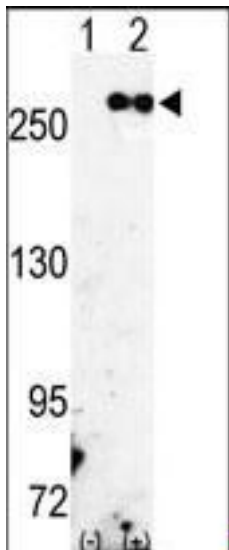
FASN Antibody (Center) flow cytometric analysis of HeLa cells (right histogram) compared to a negative control cell (left histogram). FITC-conjugated goat-anti-rabbit secondary antibodies were used for the analysis.

**Western Blot Image:**



Western blot of FASN (arrow) using antibody LS-B3636 and Ramos cell line extracts.

**Western Blot Image:**



Western blot analysis of FASN (arrow) using rabbit polyclonal FASN Antibody (Center). 293 cell lysates (2 ug/lane) either nontransfected (Lane 1) or transiently transfected with the FASN gene (Lane 2) (Origene Technologies).

**Requested From:**

Japan

Laboratory Reagent For In Vitro Research Use Only

Not for resale without prior written consent from LifeSpan BioSciences, Inc.

Created on 9/23/2014

© 2014 LifeSpan BioSciences