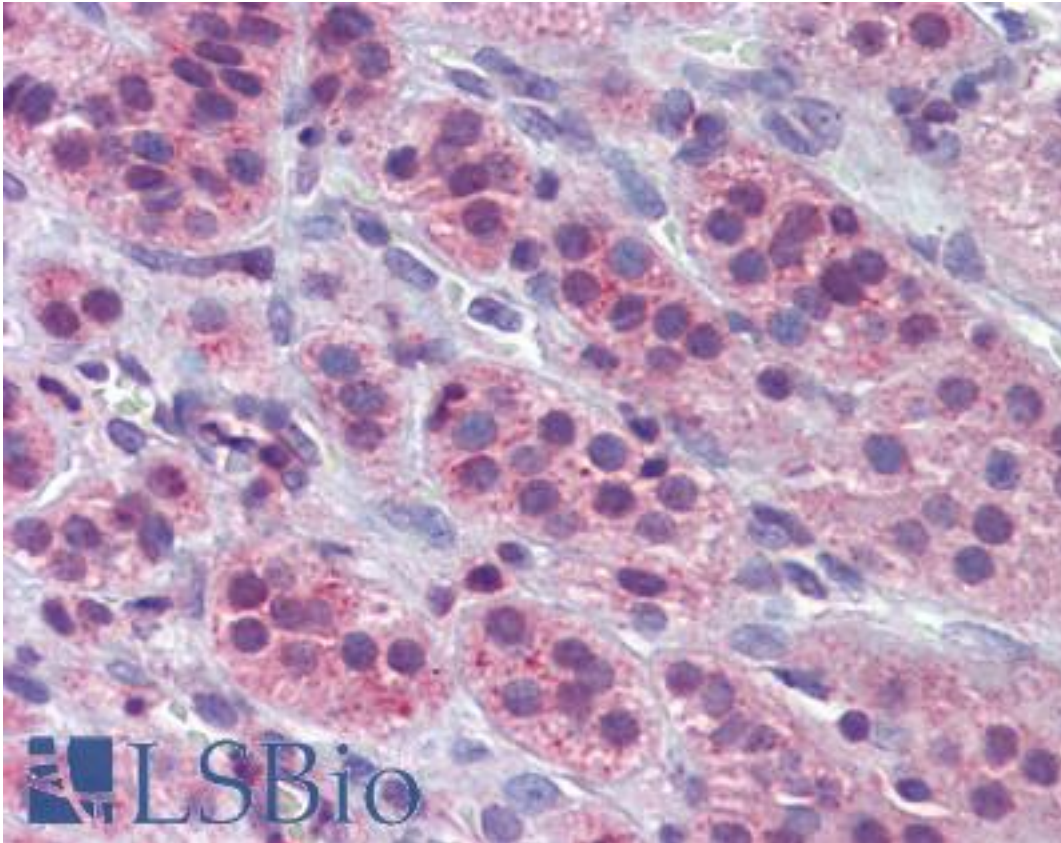


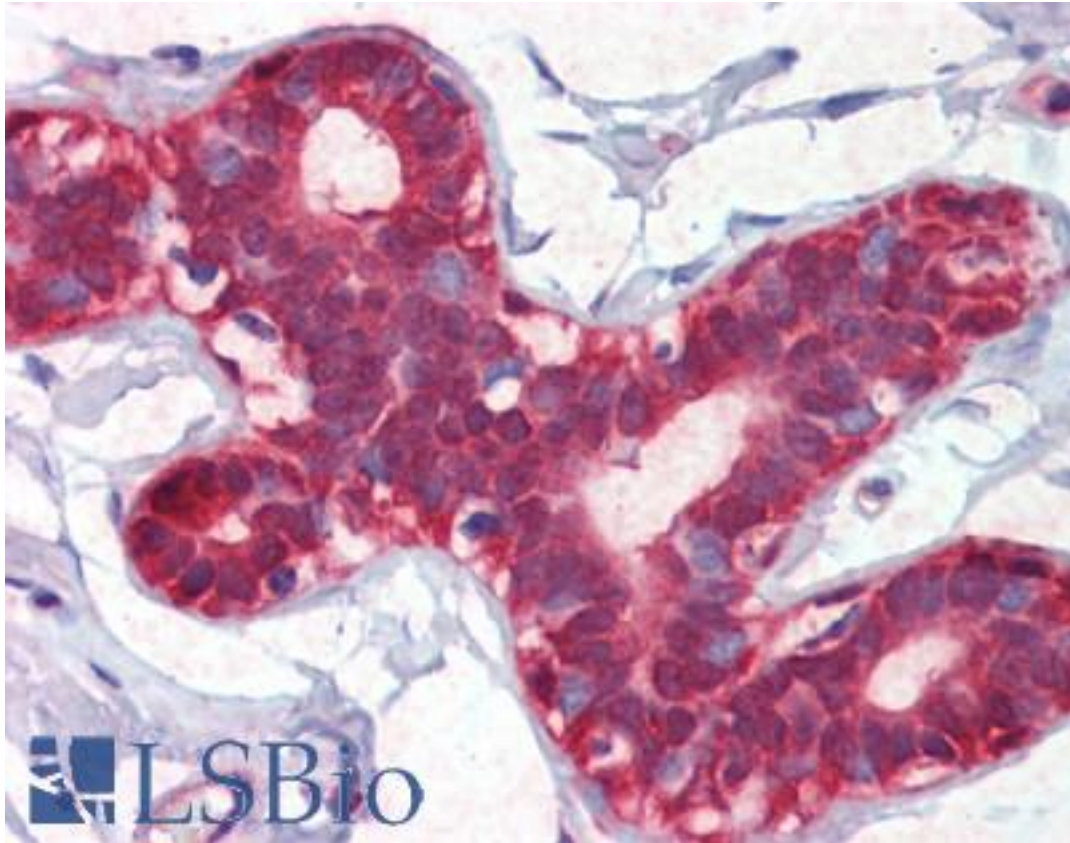
ENO1 / Alpha Enolase Rabbit anti-Human Polyclonal (Internal) Antibody - LS-B3633 - LSBio	
CatalogID:	LS-B3633
Validation:	This antibody replaces catalog number LS-C99250. It has been validated for use in the following assays: IHC-P.
Target:	enolase 1, (alpha) (ENO1)
Synonyms:	ENO1 Antibody, Alpha Enolase Antibody, Alpha enolase like 1 Antibody, ENO1L1 Antibody, Enolase 1 Antibody, MBP-1 Antibody, MBPB1 Antibody, MPB1 Antibody, MYC promoter-binding protein 1 Antibody, NNE Antibody, Phosphopyruvate hydratase Antibody, Alpha-enolase Antibody, Tau-crystallin Antibody, MBP1 Antibody, MPB-1 Antibody, C-myc promoter-binding protein Antibody, Enolase 1, (alpha) Antibody, Enolase-alpha Antibody, Non-neural enolase Antibody, Plasminogen-binding protein Antibody, PPH Antibody
Host	ENO1 antibody was produced in Rabbit
Clonality:	Polyclonal
Immunogen Species:	ENO1 / Alpha Enolase antibody was raised against Human
Antigen Type:	Synthetic peptide
Immunogen:	ENO1 / Alpha Enolase antibody was raised against kLH conjugated synthetic peptide selected from the Center region of human ENO1.
Epitope:	Internal
Reactivity:	Human
Purification:	Ammonium sulfate precipitation
Presentation:	PBS, 0.09% sodium azide
Recommended Storage:	Maintain refrigerated at 2-8°C for up to 6 months. For long term storage store at -20°C.
Usage Summary:	Immunohistochemistry: LS-B3633 was validated for use in immunohistochemistry on a panel of 21 formalin-fixed, paraffin-embedded (FFPE) human tissues after heat induced antigen retrieval in pH 6.0 citrate buffer. After incubation with the primary antibody, slides were incubated with biotinylated secondary antibody, followed by alkaline phosphatase-streptavidin and chromogen. The stained slides were evaluated by a pathologist to confirm staining specificity. The optimal working concentration for LS-B3633 was determined to be 10 ug/ml.
Uses:	IHC - Paraffin (10 µg/ml), Immunofluorescence (1:10 - 1:50), Western blot (1:1000), Flow Cytometry (1:10 - 1:50) (Optimal dilution to be determined by the researcher)
Size:	50 µg
Concentration:	0.25 mg/ml

Immunohistochemistry Image:



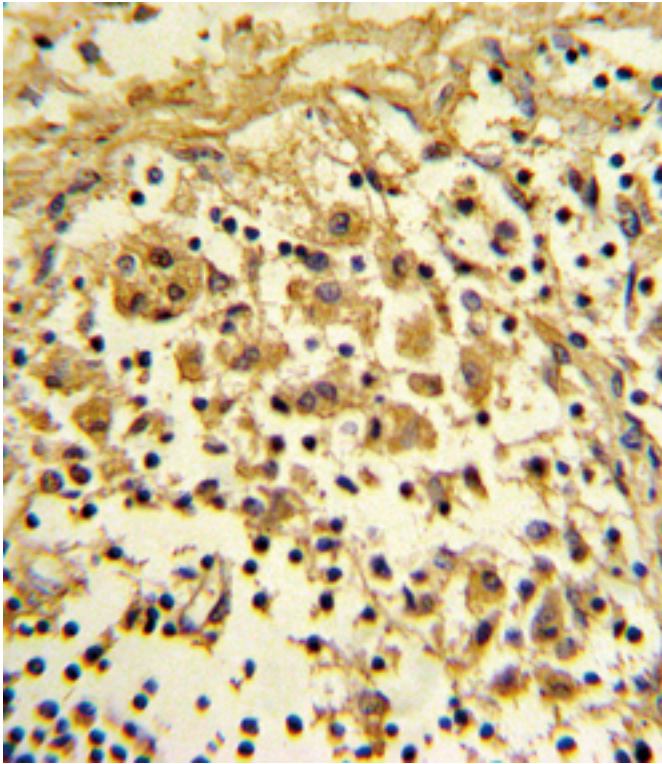
Anti-ENO1 antibody IHC of human adrenal. Immunohistochemistry of formalin-fixed, paraffin-embedded tissue after heat-induced antigen retrieval. Antibody LS-B3633 concentration 10 ug/ml.

Immunohistochemistry Image:



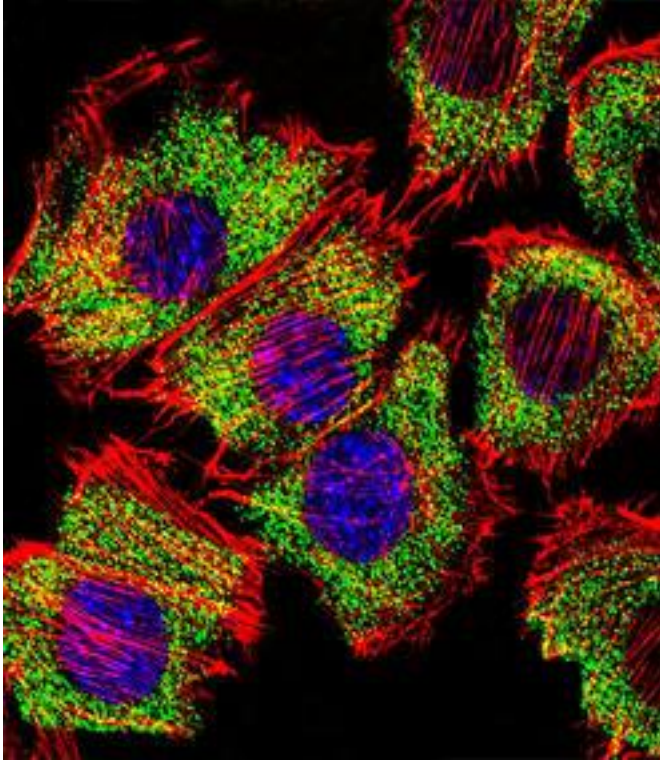
Anti-ENO1 antibody IHC of human breast. Immunohistochemistry of formalin-fixed, paraffin-embedded tissue after heat-induced antigen retrieval. Antibody LS-B3633 concentration 10 ug/ml.

Immunohistochemistry Image:



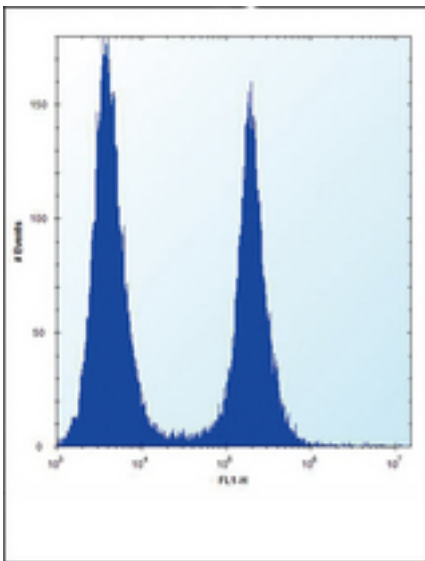
Formalin-fixed and paraffin-embedded human lymph reacted with ENO1 Antibody (Center), which was peroxidase-conjugated to the secondary antibody, followed by DAB staining. This data demonstrates the use of this antibody for immunohistochemistry; clinical relevance has not been evaluated.

Immunofluorescence Image:



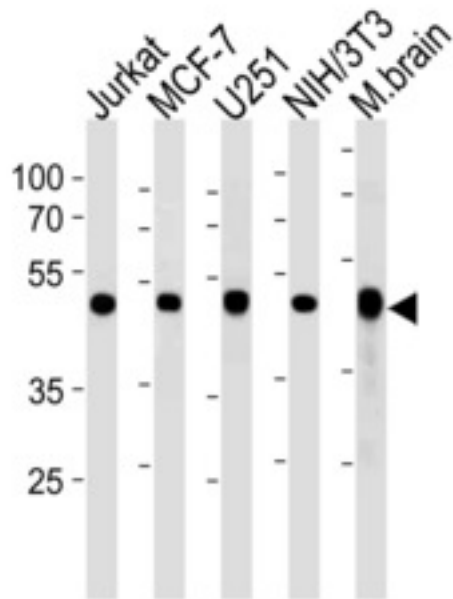
Fluorescent confocal image of C2C12 cell stained with ENO1 Antibody (Center). C2C12 cells were fixed with 4% PFA (20 min), permeabilized with Triton X-100 (0.1%, 10 min), then incubated with ENO1 primary antibody (1:25, 1 h at 37°C). For secondary antibody, Alexa Fluor 488 conjugated donkey anti-rabbit antibody (green) was used (1:400, 50 min at 37°C). Cytoplasmic actin was counterstained with Alexa Fluor 555 (red) conjugated Phalloidin (7 units/ml, 1 h at 37°C). Nuclei were counterstained with DAPI (blue) (10 µg/ml, 10 min). ENO1 immunoreactivity is localized to Cytoplasm significantly.

Flow Cytometry Image:



ENO1 Antibody (Center) flow cytometric analysis of HeLa cells (right histogram) compared to a negative control cell (left histogram). FITC-conjugated donkey-anti-rabbit secondary antibodies were used for the analysis.

Western Blot Image:



Western blot of ENO1 Antibody (Center) LS-B3633 in Ramos, HL-60 cell line lysates (35 ug/lane). ENO1 (arrow) was detected using the purified Pab.

Requested From:

Japan

Laboratory Reagent For In Vitro Research Use Only

Not for resale without prior written consent from LifeSpan BioSciences, Inc.

Created on 9/23/2014

© 2014 LifeSpan BioSciences