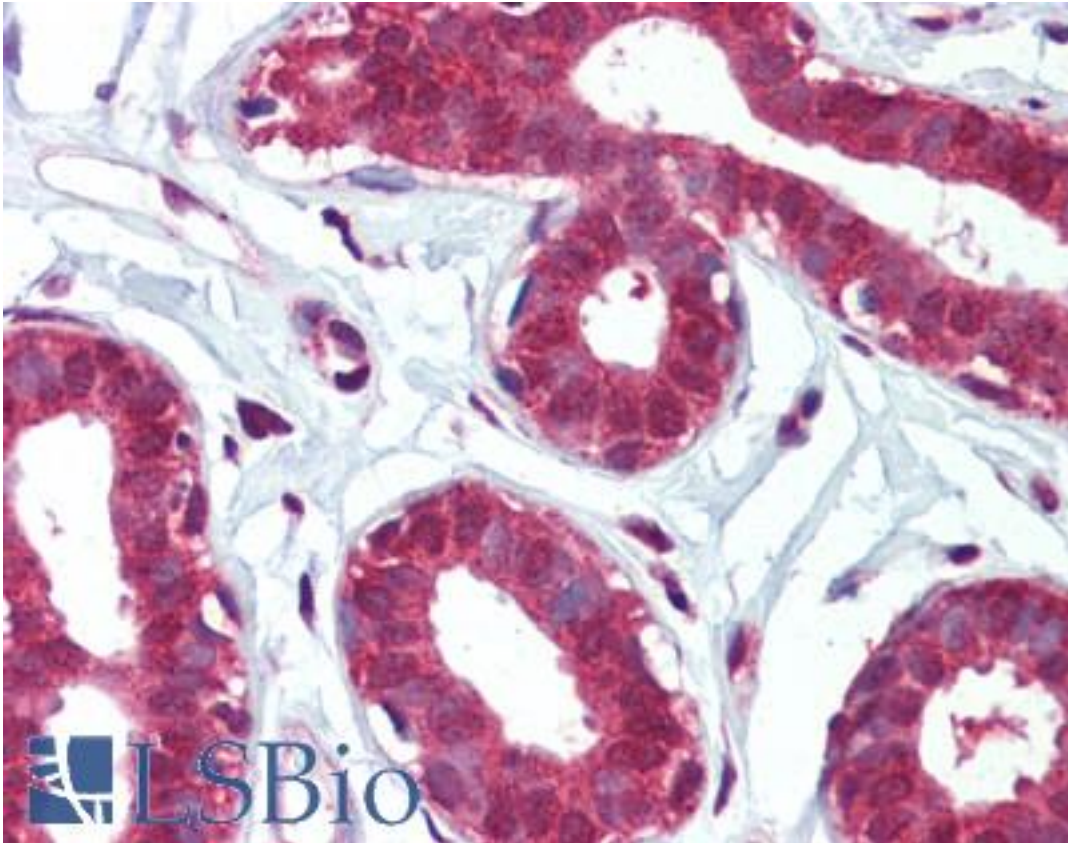


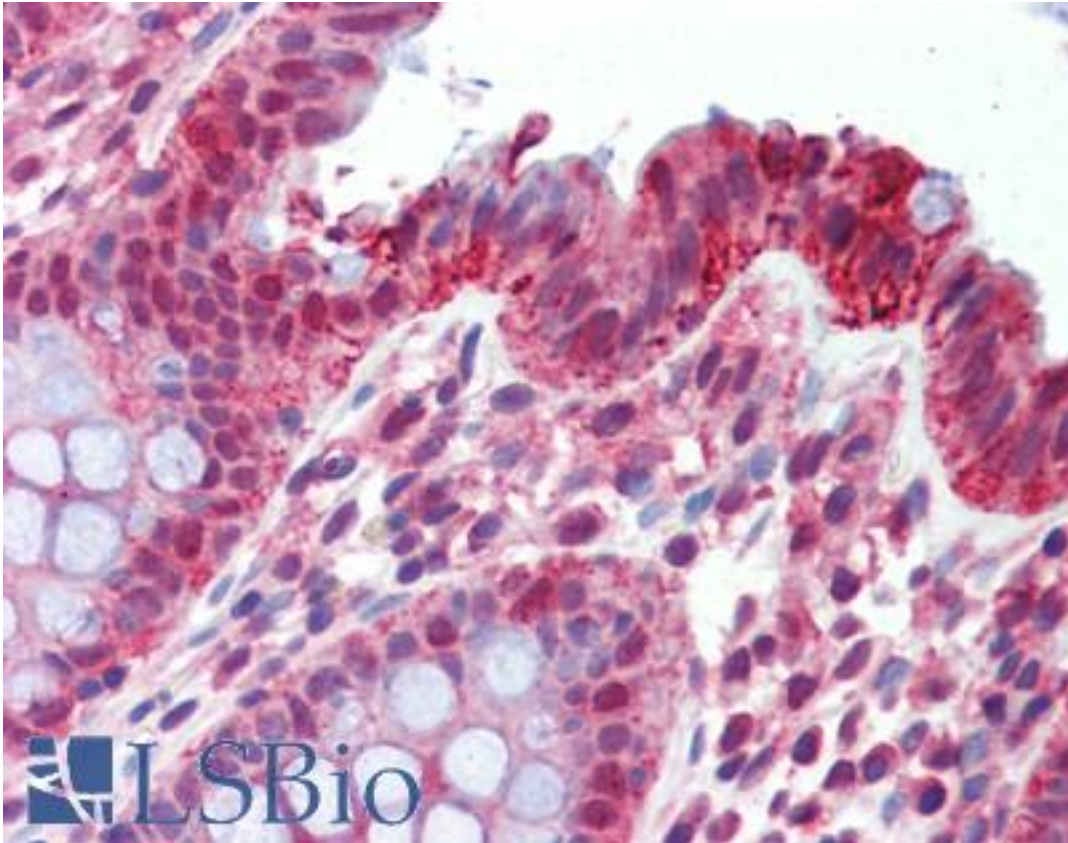
ITGA6/Integrin Alpha 6/CD49f Rabbit anti-Human Polyclonal (Ser1064) Antibody - LS-B3626 - LSBio	
CatalogID:	LS-B3626
Validation:	This antibody replaces catalog number LS-C98630. It has been validated for use in the following assays: IHC-P.
Target:	integrin, alpha 6 (ITGA6)
Synonyms:	ITGA6 Antibody, CD49f Antibody, CD49f antigen Antibody, Integrin alpha6B Antibody, Integrin, alpha 6 Antibody, Integrin alpha-6 precursor Antibody, VLA-6 Antibody, Integrin alpha-6 Antibody, ITGA6B Antibody
Family / Subfamily:	Integrin / not assigned-Integrin
Host	ITGA6 antibody was produced in Rabbit
Clonality:	Polyclonal
Immunogen Species:	ITGA6/Integrin Alpha 6/CD49f antibody was raised against Human
Immunogen:	ITGA6/Integrin Alpha 6/CD49f antibody was raised against A peptide between amino acids 1050 and 1073 surrounding Ser 1064 of human ITGA2 isoform 2 (Alpha-6X1A).
Epitope:	Ser1064
Reactivity:	Human
Purification:	Immunoaffinity purified
Presentation:	PBS, 0.09% sodium azide
Recommended Storage:	Maintain refrigerated at 2-8°C for up to 6 months. For long term storage store at -20°C.
Usage Summary:	Immunohistochemistry: LS-B3626 was validated for use in immunohistochemistry on a panel of 21 formalin-fixed, paraffin-embedded (FFPE) human tissues after heat induced antigen retrieval in pH 6.0 citrate buffer. After incubation with the primary antibody, slides were incubated with biotinylated secondary antibody, followed by alkaline phosphatase-streptavidin and chromogen. The stained slides were evaluated by a pathologist to confirm staining specificity. The optimal working concentration for LS-B3626 was determined to be 5 ug/ml.
Uses:	IHC - Paraffin (5 µg/ml), Immunofluorescence (1:200), Western blot (1:1000) (Optimal dilution to be determined by the researcher)
Size:	50 µg
Concentration:	0.25 mg/ml

Immunohistochemistry Image:



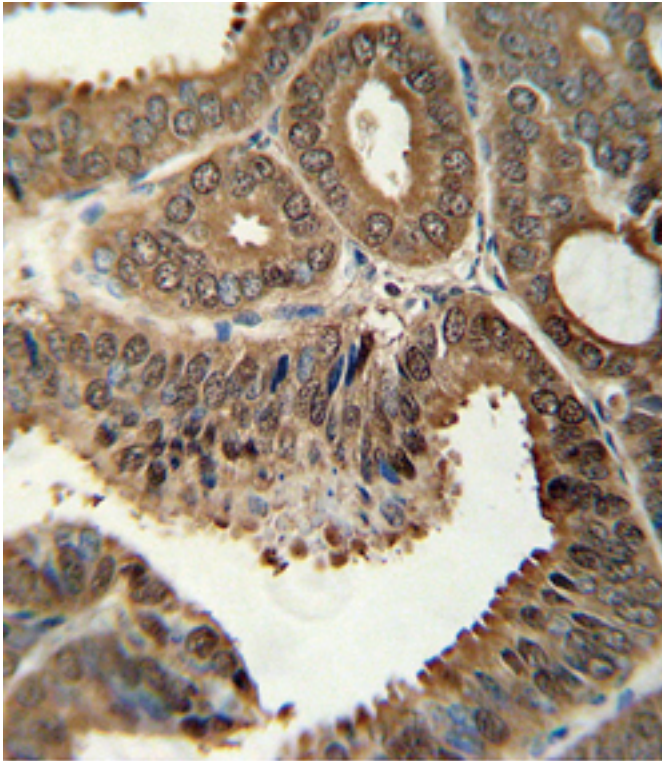
Anti-ITGA6 / CD49f antibody IHC of human breast. Immunohistochemistry of formalin-fixed, paraffin-embedded tissue after heat-induced antigen retrieval. Antibody LS-B3626 concentration 5 ug/ml.

Immunohistochemistry Image:



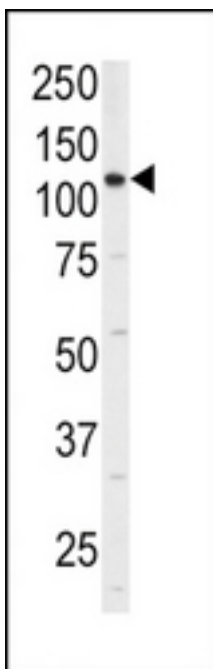
Anti-ITGA6 / CD49f antibody IHC of human colon. Immunohistochemistry of formalin-fixed, paraffin-embedded tissue after heat-induced antigen retrieval. Antibody LS-B3626 concentration 5 ug/ml.

Immunohistochemistry Image:



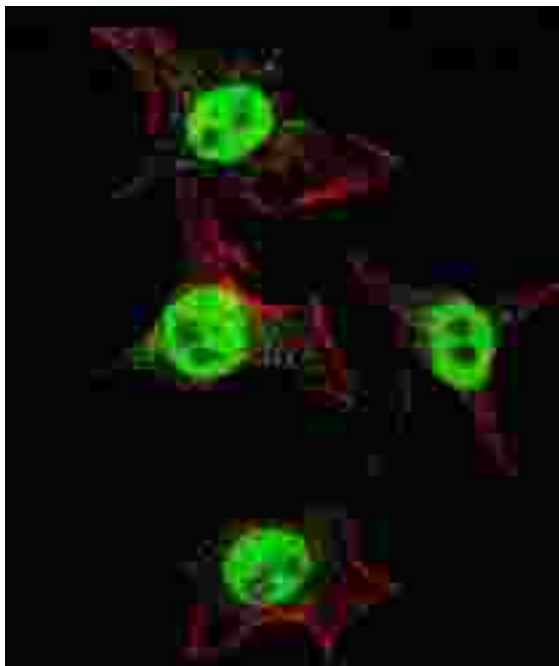
Formalin-fixed and paraffin-embedded human colon carcinoma tissue reacted with ITGA6 Antibody (isoform 2 S1064) , which was peroxidase-conjugated to the secondary antibody, followed by DAB staining. This data demonstrates the use of this antibody for immunohistochemistry; clinical relevance has not been evaluated.

Western Blot Image:



Western blot analysis of anti-ITGA6 Antibody (isoform 2 S1064) in 293 cell line lysates (35 ug/lane). ITGA6(arrow) was detected using the purified Pab.

Western Blot Image:



Western blot of anti-ITGA6 Antibody (isoform 2 S1064) LS-B3626 in 293 cell line lysates (35 ug/lane). ITGA6(arrow) was detected using the purified Pab.

Requested From:

Japan

Laboratory Reagent For In Vitro Research Use Only

Not for resale without prior written consent from LifeSpan BioSciences, Inc.

Created on 9/23/2014

© 2014 LifeSpan BioSciences