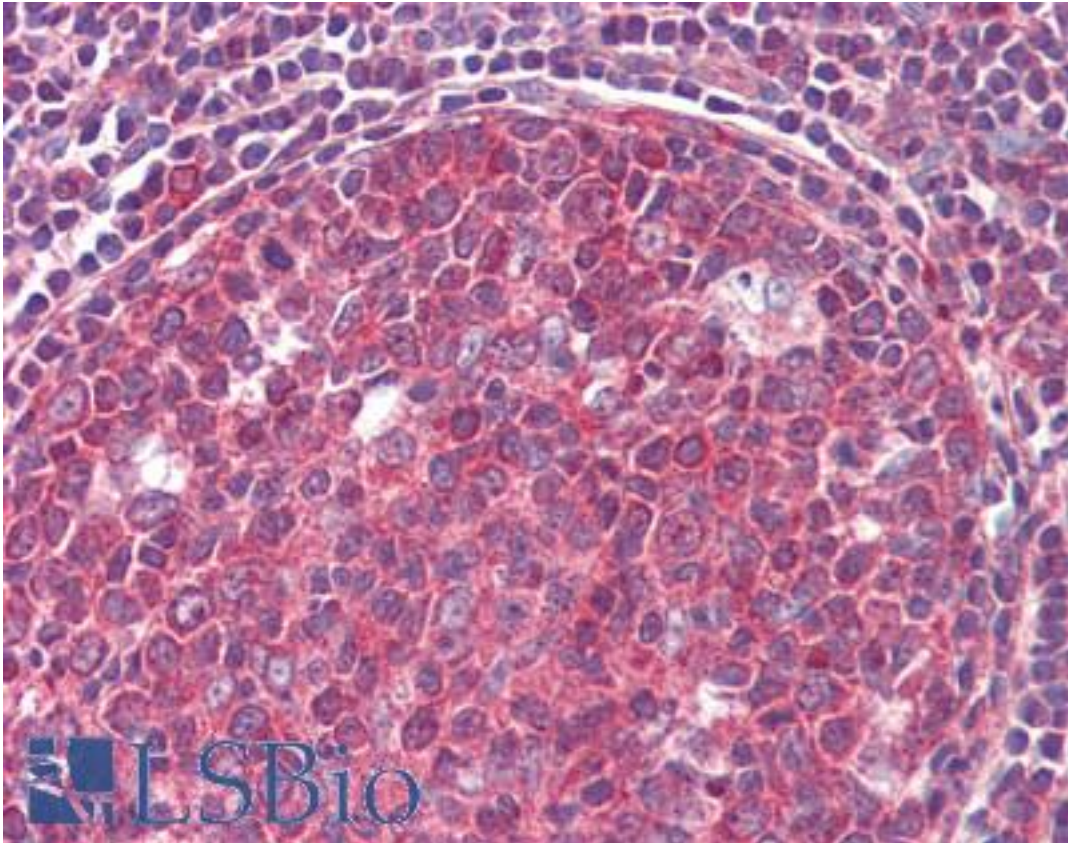


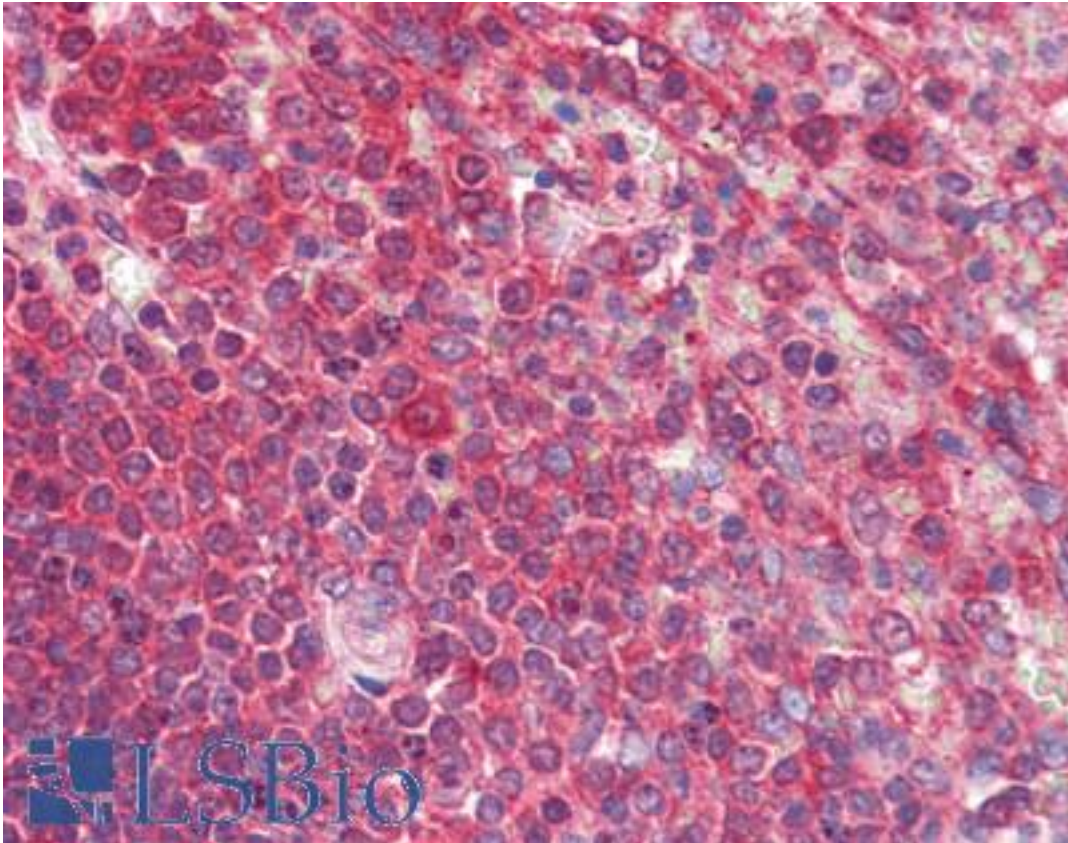
CD19 Rabbit anti-Human Polyclonal (C-Terminus) Antibody - LS-B3624 - LSBio	
<b>CatalogID:</b>	LS-B3624
<b>Validation:</b>	This antibody replaces catalog number LS-C98254. It has been validated for use in the following assays: IHC-P.
<b>Target:</b>	CD19 molecule
<b>Synonyms:</b>	CD19 Antibody, B-lymphocyte antigen CD19 Antibody, CD19 molecule Antibody, Differentiation antigen CD19 Antibody, T-cell surface antigen Leu-12 Antibody, B4 Antibody, CD19 antigen Antibody, CVID3 Antibody
<b>Host</b>	CD19 antibody was produced in Rabbit
<b>Clonality:</b>	Polyclonal
<b>Immunogen Species:</b>	CD19 antibody was raised against Human
<b>Antigen Type:</b>	Synthetic peptide
<b>Immunogen:</b>	CD19 antibody was raised against kLH conjugated synthetic peptide selected from the C-terminal region of human CD19.
<b>Epitope:</b>	C-Terminus
<b>Reactivity:</b>	Human
<b>Purification:</b>	Immunoaffinity purified
<b>Presentation:</b>	PBS, 0.09% sodium azide
<b>Recommended Storage:</b>	Maintain refrigerated at 2-8°C for up to 6 months. For long term storage store at -20°C.
<b>Usage Summary:</b>	Immunohistochemistry: LS-B3624 was validated for use in immunohistochemistry on a panel of 21 formalin-fixed, paraffin-embedded (FFPE) human tissues after heat induced antigen retrieval in pH 6.0 citrate buffer. After incubation with the primary antibody, slides were incubated with biotinylated secondary antibody, followed by alkaline phosphatase-streptavidin and chromogen. The stained slides were evaluated by a pathologist to confirm staining specificity. The optimal working concentration for LS-B3624 was determined to be 5 ug/ml.
<b>Uses:</b>	IHC - Paraffin (5 µg/ml), Western blot (1:1000) (Optimal dilution to be determined by the researcher)
<b>Size:</b>	50 µg
<b>Concentration:</b>	0.25 mg/ml

**Immunohistochemistry Image:**



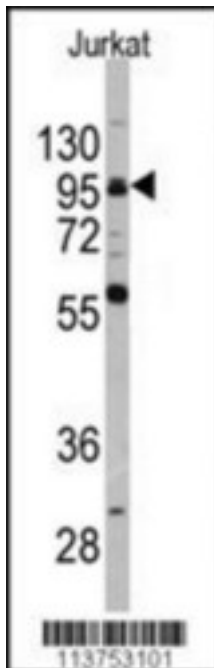
Anti-CD19 antibody IHC of human tonsil. Immunohistochemistry of formalin-fixed, paraffin-embedded tissue after heat-induced antigen retrieval. Antibody LS-B3624 concentration 5 ug/ml.

**Immunohistochemistry Image:**



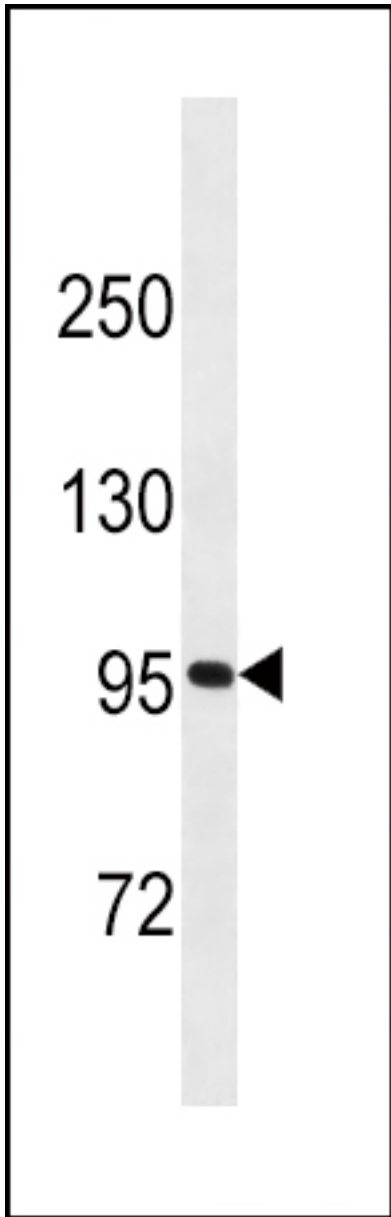
Anti-CD19 antibody IHC of human spleen. Immunohistochemistry of formalin-fixed, paraffin-embedded tissue after heat-induced antigen retrieval. Antibody LS-B3624 concentration 5 ug/ml.

**Western Blot Image:**



Western blot of CD19 Antibody (C-term) LS-B3624 in Jurkat cell line lysate. CD19 (arrow) was detected using purified Pab.

**Western Blot Image:**



Western blot of CD19 (arrow) using rabbit polyclonal CD19 Antibody (C-term) LS-B3624. 293 cell lysates (2 ug/lane) either nontransfected (Lane 1) or transiently transfected with the CD19 gene (Lane 2).

**Requested From:**

Japan

Laboratory Reagent For In Vitro Research Use Only

Not for resale without prior written consent from LifeSpan BioSciences, Inc.

Created on 9/23/2014

© 2014 LifeSpan BioSciences