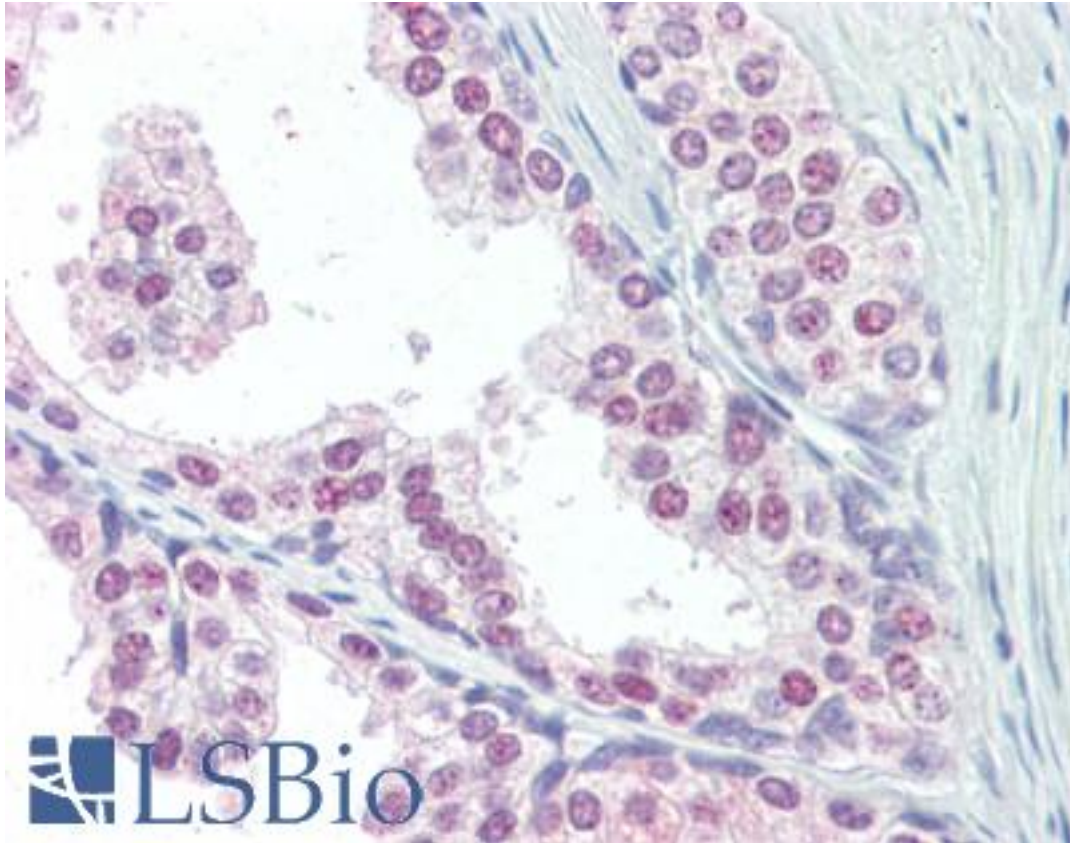


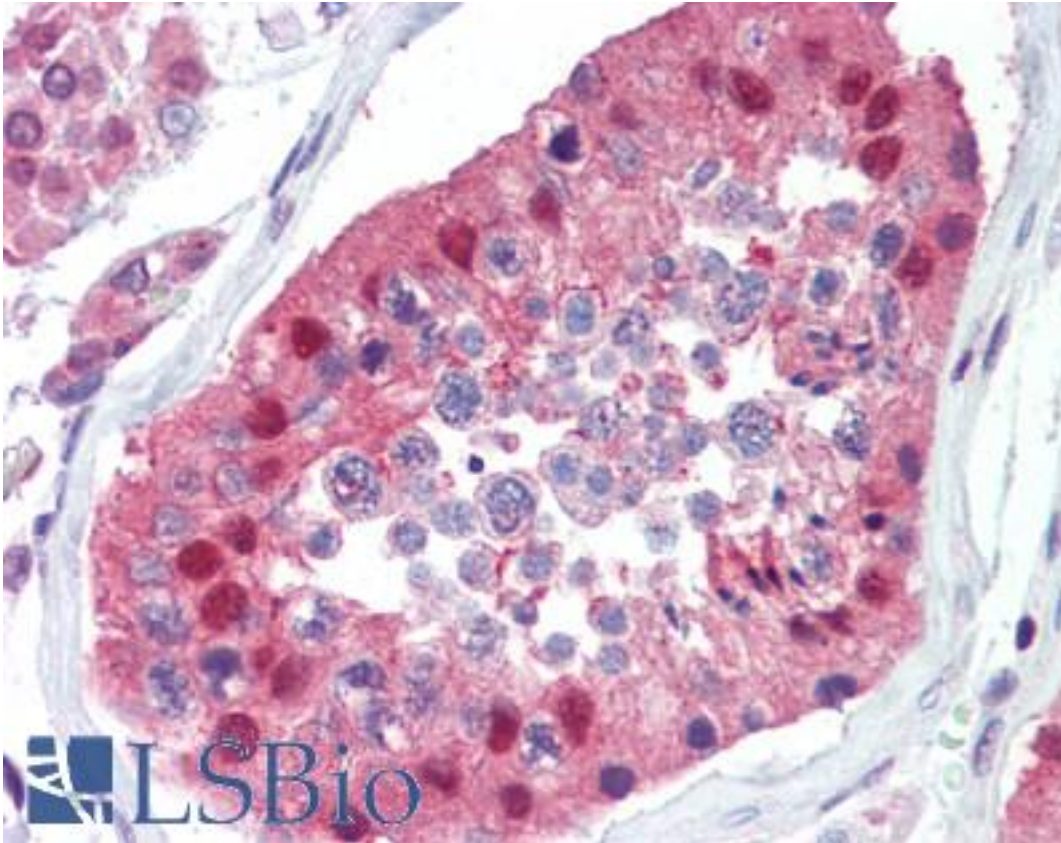
UBC / Ubiquitin C Rabbit anti-Human Polyclonal (C-Terminus) Antibody - LS-B3621 - LSBio	
CatalogID:	LS-B3621
Validation:	This antibody replaces catalog number LS-C98777. It has been validated for use in the following assays: IHC-P.
Target:	ubiquitin C (UBC)
Synonyms:	UBC Antibody, HUBCEP52 Antibody, L40 Antibody, HMG20 Antibody, RPL40 Antibody, Ubiquitin Antibody, Polyubiquitin-C Antibody, CEP52 Antibody, Ubiquitin C Antibody
Host	UBC antibody was produced in Rabbit
Clonality:	Polyclonal
Immunogen Species:	UBC / Ubiquitin C antibody was raised against Human
Antigen Type:	Synthetic peptide
Immunogen:	UBC / Ubiquitin C antibody was raised against kLH conjugated synthetic peptide selected from the C-terminal region of human Ubiquitin.
Epitope:	C-Terminus
Reactivity:	Human
Purification:	Ammonium sulfate precipitation
Presentation:	PBS, 0.09% sodium azide
Recommended Storage:	Maintain refrigerated at 2-8°C for up to 6 months. For long term storage store at -20°C.
Usage Summary:	Immunohistochemistry: LS-B3621 was validated for use in immunohistochemistry on a panel of 21 formalin-fixed, paraffin-embedded (FFPE) human tissues after heat induced antigen retrieval in pH 6.0 citrate buffer. After incubation with the primary antibody, slides were incubated with biotinylated secondary antibody, followed by alkaline phosphatase-streptavidin and chromogen. The stained slides were evaluated by a pathologist to confirm staining specificity. The optimal working concentration for LS-B3621 was determined to be 10 ug/ml.
Uses:	IHC - Paraffin (10 µg/ml), Immunofluorescence (1:10 - 1:50), Western blot (1:1000) (Optimal dilution to be determined by the researcher)
Size:	200 µl

Immunohistochemistry Image:



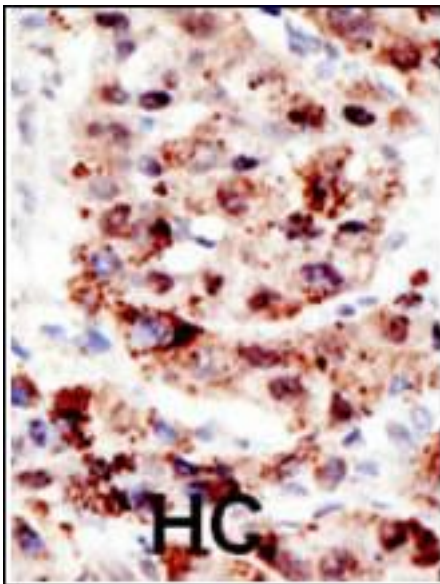
Anti-UBC / Ubiquitin C antibody IHC of human prostate. Immunohistochemistry of formalin-fixed, paraffin-embedded tissue after heat-induced antigen retrieval. Antibody LS-B3621 concentration 10 ug/ml.

Immunohistochemistry Image:



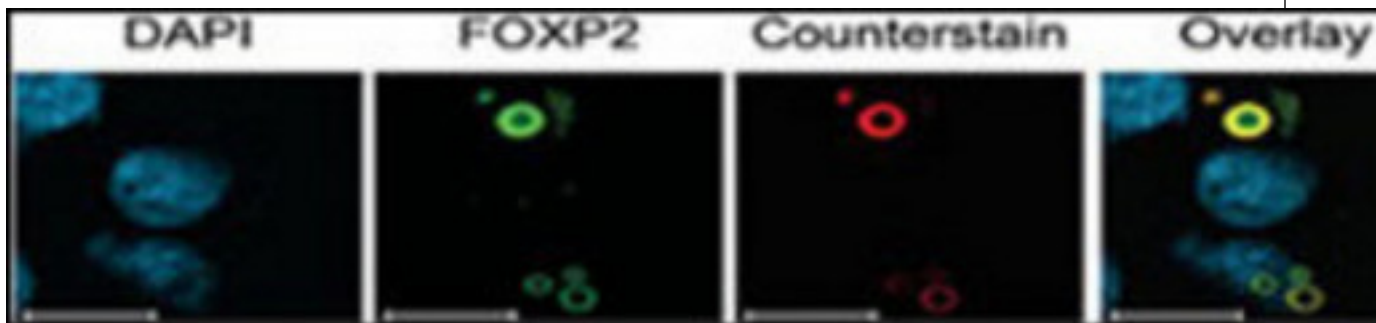
Anti-UBC / Ubiquitin C antibody IHC of human testis. Immunohistochemistry of formalin-fixed, paraffin-embedded tissue after heat-induced antigen retrieval. Antibody LS-B3621 concentration 10 ug/ml.

Immunohistochemistry Image:



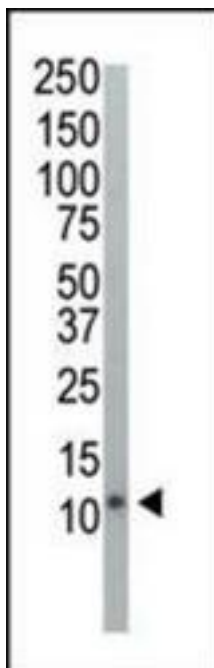
Formalin-fixed and paraffin-embedded human cancer tissue reacted with the primary antibody, which was peroxidase-conjugated to the secondary antibody, followed by AEC staining. This data demonstrates the use of this antibody for immunohistochemistry; clinical relevance has not been evaluated. BC = breast carcinoma; HC = hepatocarcinoma.

Immunofluorescence Image:



Characterization of FOXP2 Isoforms. FOXP2.10t was detected with an antibody to the N-terminal Xpress™ tag or FOXP2 (green) and counterstained with antibodies to the aggresome marker ubiquitin (red). Nuclei are marked by DAPI staining (blue). Ubiquitin co-localizes with FOXP2.10t aggregates suggesting that these cellular bodies represent aggresomes. (Hum. Mol. Genet. 2006 Nov 01;15(21):3154-3167)

Western Blot Image:



Western blot of anti-Ubiquitin Pab LS-B3621 in HeLa cell lysate. Ubiquitin (Arrow) was detected using purified Pab. Secondary HRP-anti-rabbit was used for signal visualization with chemiluminescence.

Requested From:

Japan

Laboratory Reagent For In Vitro Research Use Only

Not for resale without prior written consent from LifeSpan BioSciences, Inc.

Created on 9/23/2014

© 2014 LifeSpan BioSciences