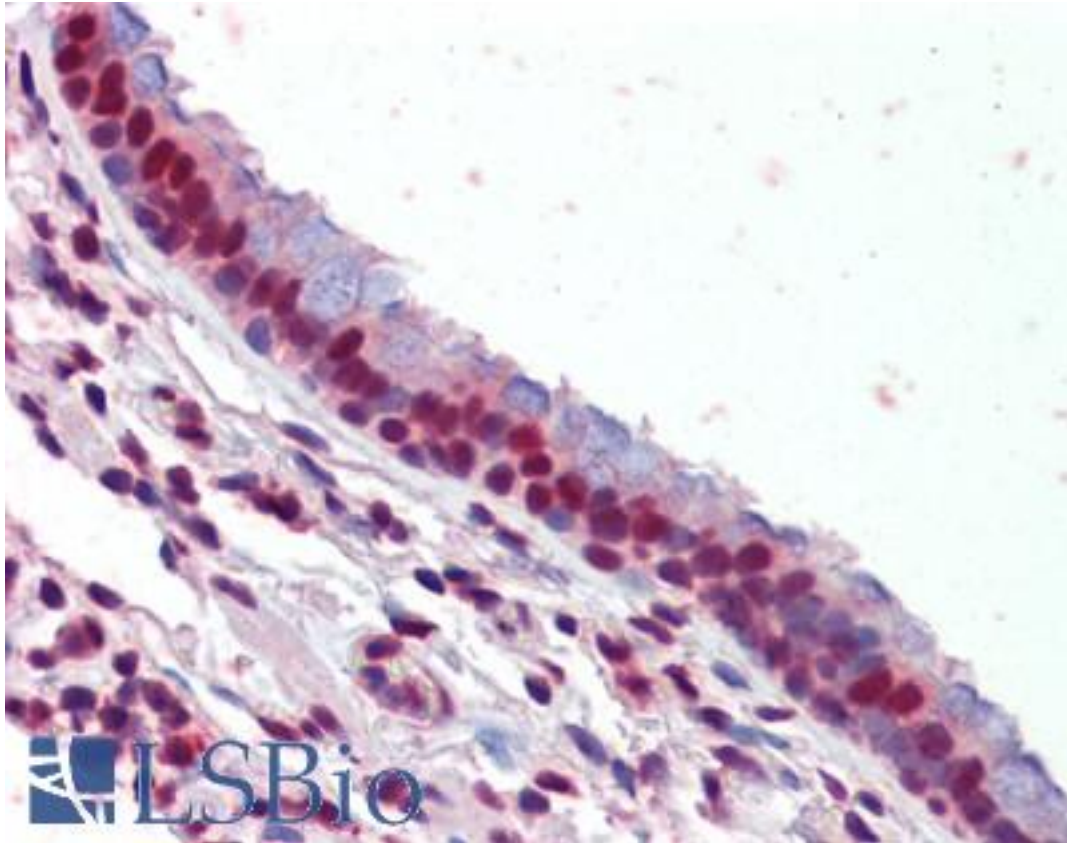


PRMT1 Rabbit anti-Human Polyclonal (C-Terminus) Antibody - LS-B3619 - LSBio

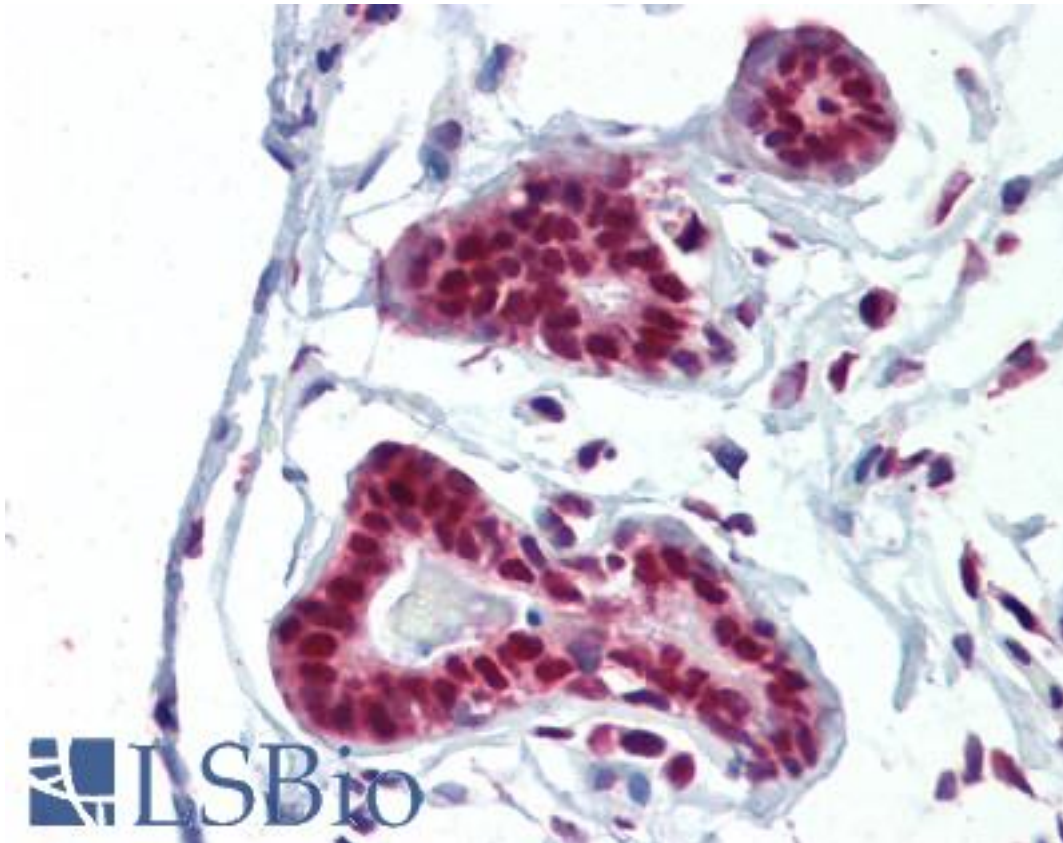
CatalogID:	LS-B3619
Validation:	This antibody replaces catalog number LS-C96503. It has been validated for use in the following assays: IHC-P.
Target:	protein arginine methyltransferase 1 (PRMT1)
Synonyms:	PRMT1 Antibody, HRMT1L2 Antibody, HMT2 Antibody, ANM1 Antibody, HCP1 Antibody, IR1B4 Antibody
Host	PRMT1 antibody was produced in Rabbit
Clonality:	Polyclonal
Immunogen Species:	PRMT1 antibody was raised against Human
Antigen Type:	Synthetic peptide
Immunogen:	PRMT1 antibody was raised against kLH conjugated synthetic peptide selected from the C-terminal region of human PRMT1.
Epitope:	C-Terminus
Reactivity:	Human
Purification:	Ammonium sulfate precipitation
Presentation:	PBS, 0.09% sodium azide
Recommended Storage:	Maintain refrigerated at 2-8°C for up to 6 months. For long term storage store at -20°C.
Usage Summary:	Immunohistochemistry: LS-B3619 was validated for use in immunohistochemistry on a panel of 21 formalin-fixed, paraffin-embedded (FFPE) human tissues after heat induced antigen retrieval in pH 6.0 citrate buffer. After incubation with the primary antibody, slides were incubated with biotinylated secondary antibody, followed by alkaline phosphatase-streptavidin and chromogen. The stained slides were evaluated by a pathologist to confirm staining specificity. The optimal working concentration for LS-B3619 was determined to be 10 ug/ml.
Uses:	IHC - Paraffin (10 µg/ml), Western blot (1:1000) (Optimal dilution to be determined by the researcher)
Size:	200 µl

Immunohistochemistry Image:



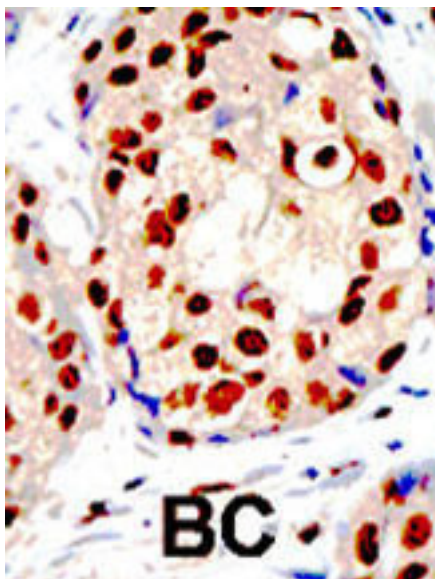
Anti-PRMT1 antibody IHC of human lung, respiratory epithelium. Immunohistochemistry of formalin-fixed, paraffin-embedded tissue after heat-induced antigen retrieval. Antibody LS-B3619 concentration 10 ug/ml.

Immunohistochemistry Image:



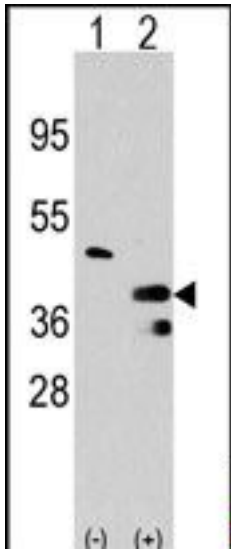
Anti-PRMT1 antibody IHC of human breast. Immunohistochemistry of formalin-fixed, paraffin-embedded tissue after heat-induced antigen retrieval. Antibody LS-B3619 concentration 10 ug/ml.

Immunohistochemistry Image:



Formalin-fixed and paraffin-embedded human cancer tissue reacted with the primary antibody, which was peroxidase-conjugated to the secondary antibody, followed by DAB staining. This data demonstrates the use of this antibody for immunohistochemistry; clinical relevance has not been evaluated. BC = breast carcinoma; HC = hepatocarcinoma.

Western Blot Image:



Western blot of PRMT1 (arrow) using rabbit polyclonal PRMT1 Antibody (C-term) (RB00005). 293 cell lysates (2 ug/lane) either nontransfected (Lane 1) or transiently transfected with the PRMT1 gene (Lane 2).

Requested From:

Japan

Laboratory Reagent For In Vitro Research Use Only

Not for resale without prior written consent from LifeSpan BioSciences, Inc.

Created on 9/23/2014

© 2014 LifeSpan BioSciences