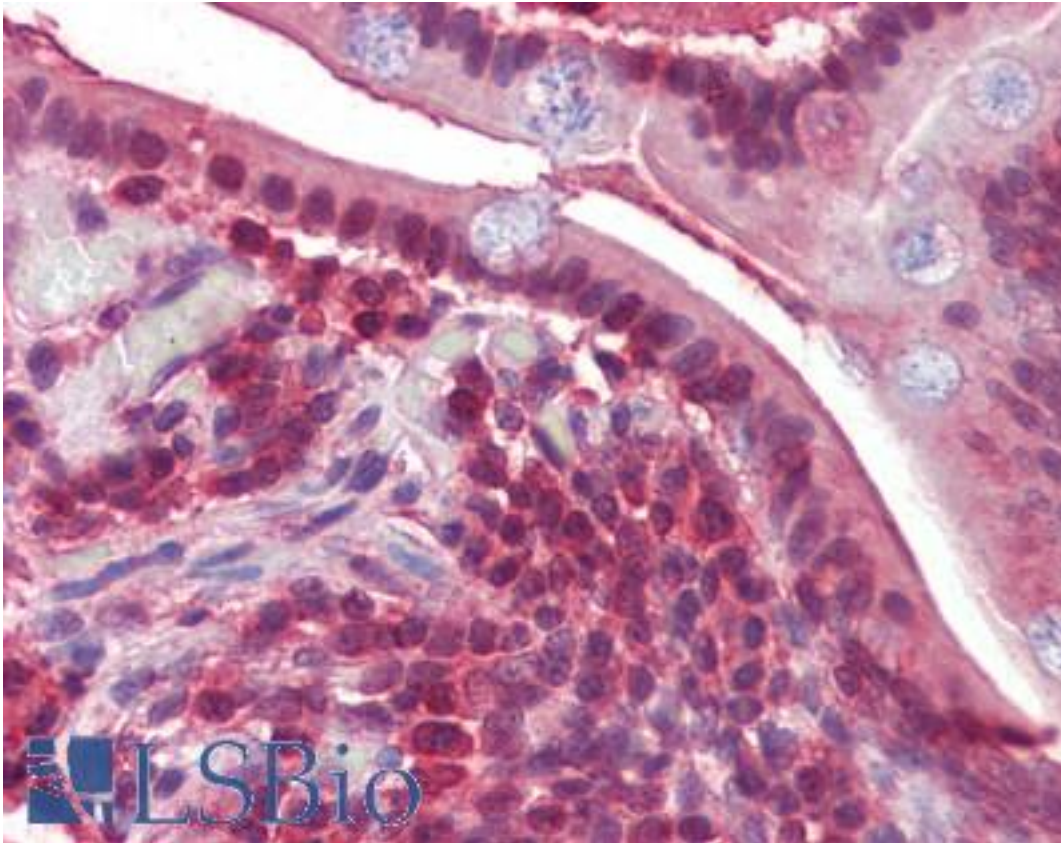


PPP4C Goat anti-Human Polyclonal Antibody - LS-B3614 - LSBio

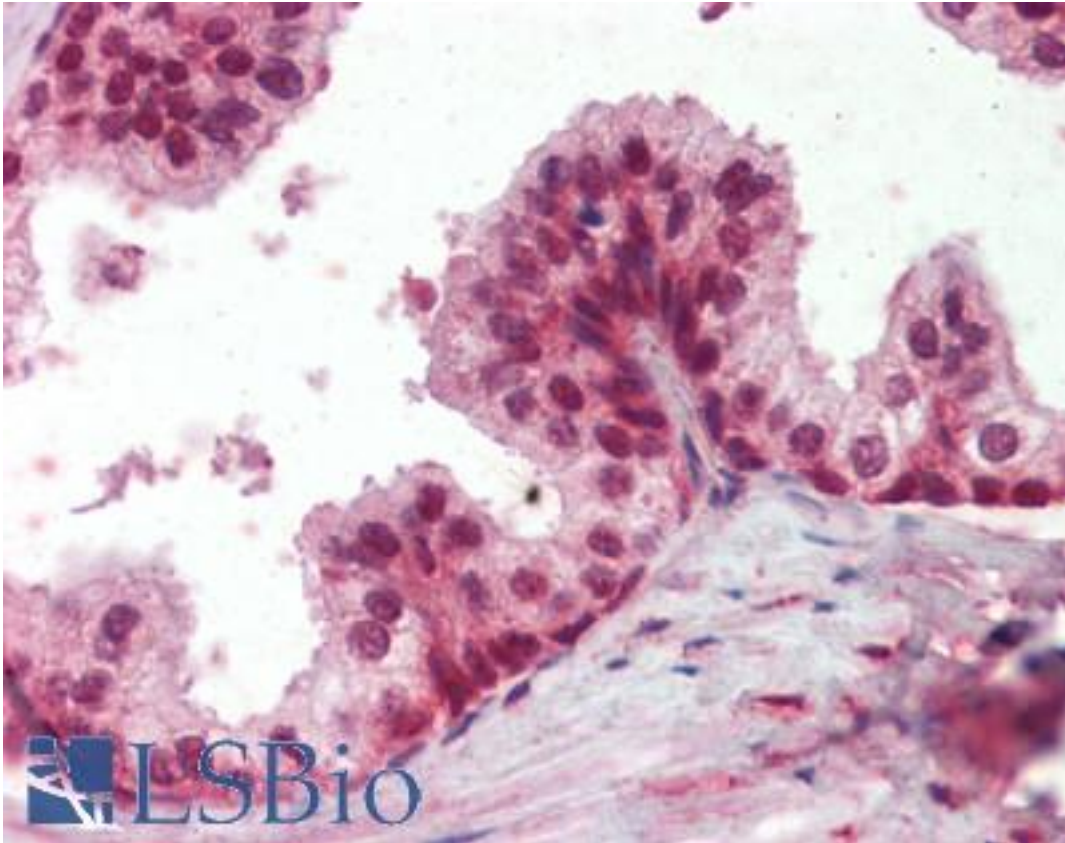
<b>CatalogID:</b>	LS-B3614
<b>Validation:</b>	This antibody replaces catalog number LS-C101315. It has been validated for use in the following assays: IHC-P.
<b>Target:</b>	protein phosphatase 4, catalytic subunit (PPP4C)
<b>Synonyms:</b>	PPP4C Antibody, PP4 Antibody, PPH3 Antibody, Protein phosphatase X Antibody, PP-X Antibody, Protein phosphatase 4 Antibody, PP4C Antibody, PPP4 Antibody, PPX Antibody
<b>Family / Subfamily:</b>	Protein Phosphatase / Protein Phosphatase - Serine/Threonine other
<b>Host</b>	PPP4C antibody was produced in Goat
<b>Clonality:</b>	Polyclonal
<b>Immunogen Species:</b>	PPP4C antibody was raised against Human
<b>Antigen Type:</b>	Synthetic peptide
<b>Immunogen:</b>	PPP4C antibody was raised against synthetic peptide C-PQETRGIPSKKP from the C-terminus of human PPP4C (NP_002711.1). Percent identity by BLAST analysis: Human, Gorilla, Orangutan, Gibbon, Monkey, Marmoset, Mouse, Rat, Hamster, Elephant, Panda, Dog, Bat, Bovine, Horse, Rabbit, Opossum, Platypus, Xenopus, Catfish, Stickleback, Pufferfish, Zebrafish, Water flea (100%); Drosophila, Mosquito, Ant, Beetle (92%); Seq squirt, Poplar, Trichoplax, Toxoplasma, Tick, Spikemoss, Amoeba, Neospora (83%).
<b>Specificity:</b>	Human PPP4C.
<b>Reactivity:</b>	Human, Gorilla, Orangutan, Gibbon, Monkey, Mouse, Rat, Bat, Bovine, Dog, Hamster, Horse, Rabbit, Xenopus, Zebrafish
<b>Predicted Reactivity:</b>	Drosophila, Insect
<b>Purification:</b>	Immunoaffinity purified
<b>Presentation:</b>	Tris-buffered saline, pH 7.3, 0.5% BSA, 0.02% sodium azide
<b>Recommended Storage:</b>	Store at -20°C. Minimize freezing and thawing.
<b>Usage Summary:</b>	Immunohistochemistry: LS-B3614 was validated for use in immunohistochemistry on a panel of 21 formalin-fixed, paraffin-embedded (FFPE) human tissues after heat induced antigen retrieval in pH 6.0 citrate buffer. After incubation with the primary antibody, slides were incubated with biotinylated secondary antibody, followed by alkaline phosphatase-streptavidin and chromogen. The stained slides were evaluated by a pathologist to confirm staining specificity. The optimal working concentration for LS-B3614 was determined to be 2.5 ug/ml. Western Blot: Approximately 35kD band observed in HEK293, A431 and HeLa lysates (calculated MW of 35.1kD according to NP_002711.1).
<b>Uses:</b>	IHC - Paraffin (2.5 µg/ml), Western blot (0.1 - 0.3 µg/ml), ELISA (Optimal dilution to be determined by the researcher)
<b>Size:</b>	50 µg
<b>Concentration:</b>	0.5 mg/ml

**Immunohistochemistry Image:**



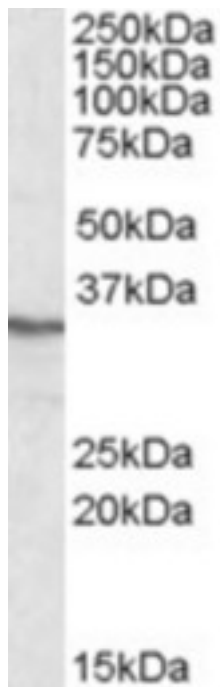
Anti-PPP4C antibody IHC of human small intestine. Immunohistochemistry of formalin-fixed, paraffin-embedded tissue after heat-induced antigen retrieval. Antibody LS-B3614 concentration 2.5 ug/ml.

**Immunohistochemistry Image:**



Anti-PPP4C antibody IHC of human prostate. Immunohistochemistry of formalin-fixed, paraffin-embedded tissue after heat-induced antigen retrieval. Antibody LS-B3614 concentration 2.5 ug/ml.

**Western Blot Image:**



Antibody (0.3 ug/ml) staining of HEK293 lysate (35 ug protein in RIPA buffer). Primary incubation was 1 hour. Detected by chemiluminescence.

**Requested From:**

Japan

Laboratory Reagent For In Vitro Research Use Only

Not for resale without prior written consent from LifeSpan BioSciences, Inc.

Created on 9/23/2014

© 2014 LifeSpan BioSciences