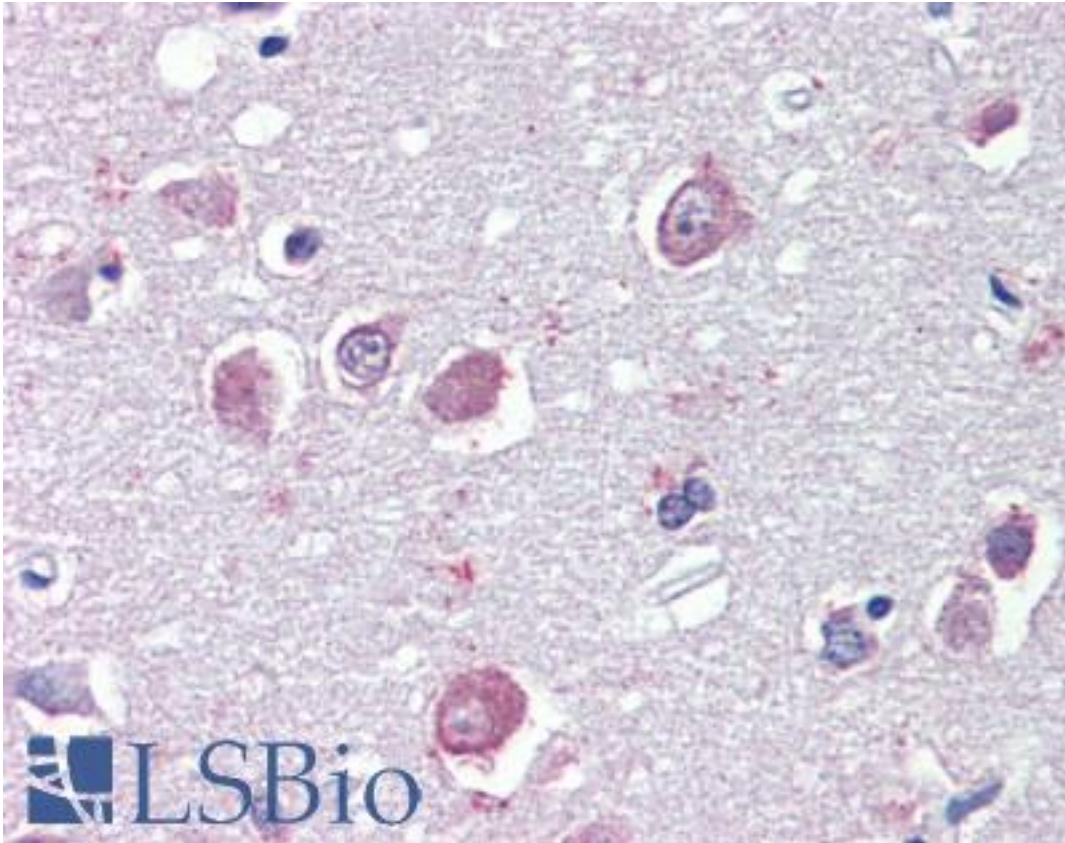


GABRB3 Goat anti-Human Polyclonal (Internal) Antibody - LS-B3610 - LSBio	
CatalogID:	LS-B3610
Validation:	This antibody replaces catalog number LS-C87388. It has been validated for use in the following assays: IHC-Fr, IHC-P.
Target:	gamma-aminobutyric acid (GABA) A receptor, beta 3 (GABRB3)
Synonyms:	GABRB3 Antibody, Cleft palate 1 Antibody, Cp1 Antibody, GABAA receptor beta-3 subunit Antibody, GABA(A) receptor, beta 3 Antibody, ECA5 Antibody, GABA A receptor beta 3 Antibody
Family / Subfamily:	Ion Channel / GABA A receptor
Host	GABRB3 antibody was produced in Goat
Clonality:	Polyclonal
Immunogen Species:	GABRB3 antibody was raised against Human
Antigen Type:	Synthetic peptide
Immunogen:	GABRB3 antibody was raised against synthetic peptide C-EKTAKAKNDRSK from an internal region of human GABRB3 (NP_000805.1; NP_068712.1). Percent identity by BLAST analysis: Human, Gorilla, Orangutan, Gibbon, Monkey, Marmoset, Mouse, Rat, Hamster, Elephant, Panda, Cat, Dog, Horse (100%); Bovine, Rabbit, Pig, Lizard (92%); Opossum, Turkey, Platypus (83%).
Specificity:	Human GABRB3. This antibody is expected to recognize both reported isoforms (NP_000805.1, NP_068712.1).
Epitope:	Internal
Reactivity:	Human, Gorilla, Orangutan, Gibbon, Monkey, Mouse, Rat, Dog, Hamster, Horse
Predicted Reactivity:	Bovine, Pig, Rabbit
Purification:	Immunoaffinity purified
Presentation:	Tris-buffered saline, pH 7.3, 0.5% BSA, 0.02% sodium azide
Recommended Storage:	Store at -20°C. Minimize freezing and thawing.
Usage Summary:	Immunohistochemistry: LS-B3610 was validated for use in immunohistochemistry on a panel of 21 formalin-fixed, paraffin-embedded (FFPE) human tissues after heat induced antigen retrieval in pH 6.0 citrate buffer. After incubation with the primary antibody, slides were incubated with biotinylated secondary antibody, followed by alkaline phosphatase-streptavidin and chromogen. The stained slides were evaluated by a pathologist to confirm staining specificity. The optimal working concentration for LS-B3610 was determined to be 2.5 ug/ml. Peptide ELISA: antibody detection limit dilution 1:8000. Western Blot: Preliminary experiments in Human Brain (Cerebral Cortex, Frontal Cortex and Cerebellum) lysates gave no specific signal but low background (at antibody concentration up to 1 ug/ml).
Uses:	IHC - Paraffin (2.5 ug/ml), Western blot, ELISA (1:8000) (Optimal dilution to be determined by the researcher)
Size:	50 ug
Concentration:	0.5 mg/ml

Immunohistochemistry Image:



Anti-GABRB3 antibody IHC of human brain, cortex. Immunohistochemistry of formalin-fixed, paraffin-embedded tissue after heat-induced antigen retrieval. Antibody LS-B3610 concentration 2.5 ug/ml.

Requested From:

Japan

Laboratory Reagent For In Vitro Research Use Only

Not for resale without prior written consent from LifeSpan BioSciences, Inc.

Created on 9/23/2014

© 2014 LifeSpan BioSciences