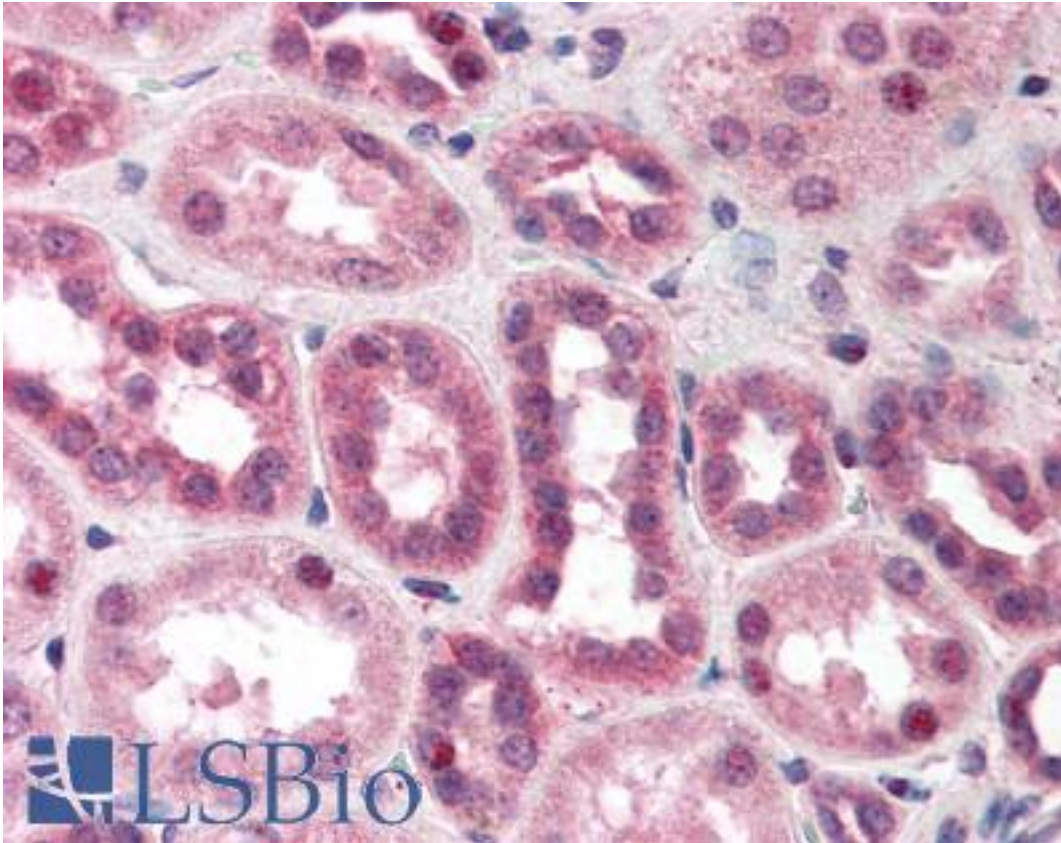


CUL5 / Cullin-5 Rabbit anti-Human Polyclonal (N-Terminus) Antibody - LS-B361 - LSBio	
CatalogID:	LS-B361
Validation:	This antibody replaces catalog number LS-C19011. It has been validated for use in the following assays: IHC.
Target:	cullin 5 (CUL5)
Synonyms:	CUL5 Antibody, Cullin 5 Antibody, CUL-5 Antibody, VACM-1 Antibody, VACM1 Antibody, Cullin-5 Antibody
Family / Subfamily:	Ion Channel
Host	CUL5 antibody was produced in Rabbit
Clonality:	Polyclonal
Immunogen Species:	CUL5 / Cullin-5 antibody was raised against Human
Antigen Type:	Synthetic peptide
Immunogen:	CUL5 / Cullin-5 antibody was raised against synthetic peptide from human CUL5 / Cullin 5.
Specificity:	Amino acids 4-18 of Human Cul5 (N-terminus) coupled to KLH.
Epitope:	N-Terminus
Reactivity:	Human
Purification:	Delipidated and defibrinated
Presentation:	0.01% sodium azide.
Recommended Storage:	+4°C or -20°C, Avoid repeated freezing and thawing.
Usage Summary:	Immunohistochemistry: LS-B361 was validated for use in immunohistochemistry on a panel of 21 formalin-fixed, paraffin-embedded (FFPE) human tissues after heat induced antigen retrieval in pH 6.0 citrate buffer. After incubation with the primary antibody, slides were incubated with biotinylated secondary antibody, followed by alkaline phosphatase-streptavidin and chromogen. The stained slides were evaluated by a pathologist to confirm staining specificity. The optimal working concentration for LS-B361 was determined to be 1:500.
Uses:	IHC - Paraffin (1:500), Western blot (1:500 - 1:1000), Immunoprecipitation, ELISA (1:2000 - 1:10000) (Optimal dilution to be determined by the researcher)
Size:	50 µl
Concentration:	85 mg/ml

Immunohistochemistry Image:



Anti-CUL5 / Cullin 5 antibody IHC of human kidney. Immunohistochemistry of formalin-fixed, paraffin-embedded tissue after heat-induced antigen retrieval. Antibody LS-B361 dilution 1:500.

Requested From:

Japan

Laboratory Reagent For In Vitro Research Use Only

Not for resale without prior written consent from LifeSpan BioSciences, Inc.

Created on 9/23/2014

© 2014 LifeSpan BioSciences