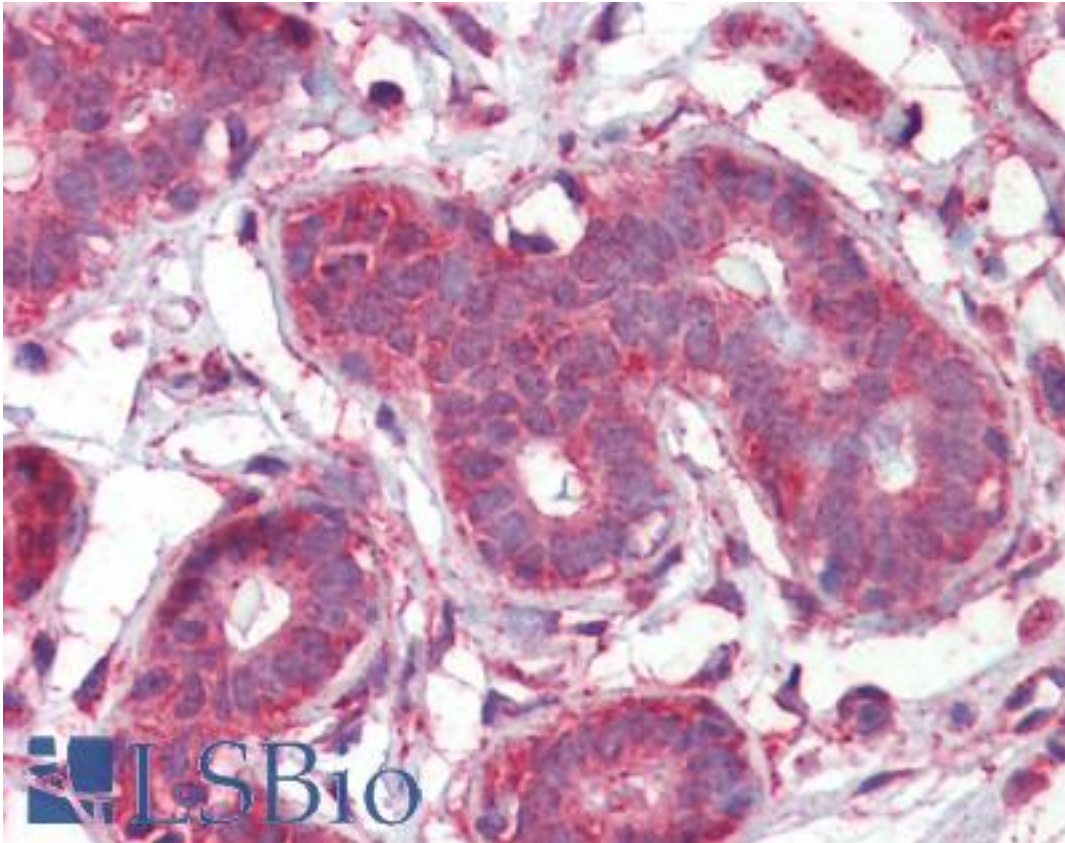


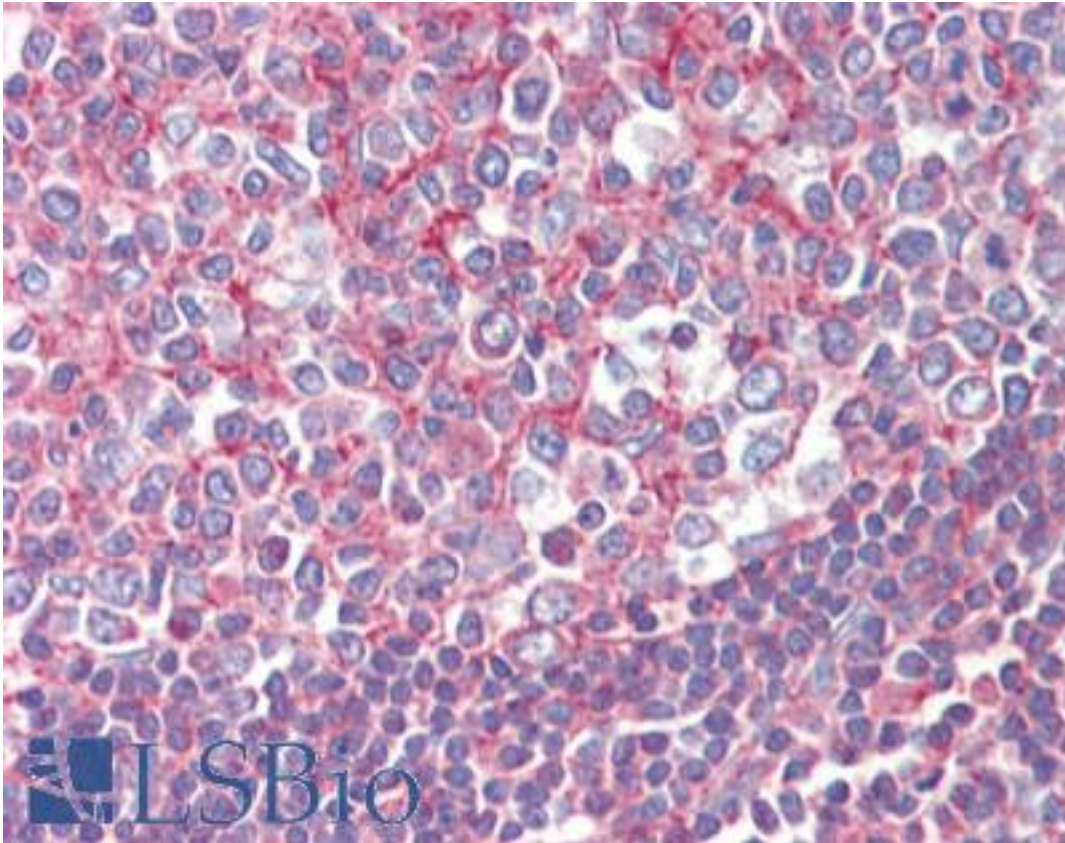
SEPT2 / Septin 2 Goat anti-Human Polyclonal (N-Terminus) Antibody - LS-B3607 - LSBio	
CatalogID:	LS-B3607
Validation:	This antibody replaces catalog number LS-C87363. It has been validated for use in the following assays: IHC-P.
Target:	septin 2 (SEPT2)
Synonyms:	SEPT2 Antibody, DIFF6 Antibody, HNedd5 Antibody, KIAA0158 Antibody, NEDD5 Antibody, Septin-2 Antibody, Septin 2 Antibody, NEDD-5 Antibody, PNU TL3 Antibody
Host	SEPT2 antibody was produced in Goat
Clonality:	Polyclonal
Immunogen Species:	SEPT2 / Septin 2 antibody was raised against Human
Antigen Type:	Synthetic peptide
Immunogen:	SEPT2 / Septin 2 antibody was raised against synthetic peptide SKQQPTQFINPET-C from the N-terminus of human SEPT2 / Septin 2 (NP_001008491.1). Percent identity by BLAST analysis: Human, Gorilla, Orangutan, Gibbon, Monkey, Mouse, Rat, Rabbit (100%); Marmoset, Bovine, Dog, Horse (92%); Panda, Bat, Pig, Chicken, Platypus (85%).
Specificity:	Human SEPT2 / Septin 2. Reported variants represent identical protein: NP_001008492.1, NP_006146.1, NP_004395.1, NP_001008491.1.
Epitope:	N-Terminus
Reactivity:	Human, Gorilla, Orangutan, Gibbon, Mouse, Rat, Rabbit
Predicted Reactivity:	Monkey, Bovine, Dog, Horse
Purification:	Immunoaffinity purified
Presentation:	Tris-buffered saline, pH 7.3, 0.5% BSA, 0.02% sodium azide
Recommended Storage:	Store at -20°C. Minimize freezing and thawing.
Usage Summary:	Immunohistochemistry: LS-B3607 was validated for use in immunohistochemistry on a panel of 21 formalin-fixed, paraffin-embedded (FFPE) human tissues after heat induced antigen retrieval in pH 6.0 citrate buffer. After incubation with the primary antibody, slides were incubated with biotinylated secondary antibody, followed by alkaline phosphatase-streptavidin and chromogen. The stained slides were evaluated by a pathologist to confirm staining specificity. The optimal working concentration for LS-B3607 was determined to be 2.5 µg/ml. Peptide ELISA: antibody detection limit dilution 1:32000. Western Blot: Approx. 40kD band observed in Human, Mouse and Rat Testis lysates (calculated MW of 41.5kD according to NP_001008491.1). Recommended concentration: 0.05-0.2 µg/ml.
Uses:	IHC - Paraffin (2.5 µg/ml), Western blot (0.05 - 0.2 µg/ml), ELISA (1:32000) & (0.05 - 0.2 µg/ml) (Optimal dilution to be determined by the researcher)
Size:	50 µg
Concentration:	0.5 mg/ml

Immunohistochemistry Image:



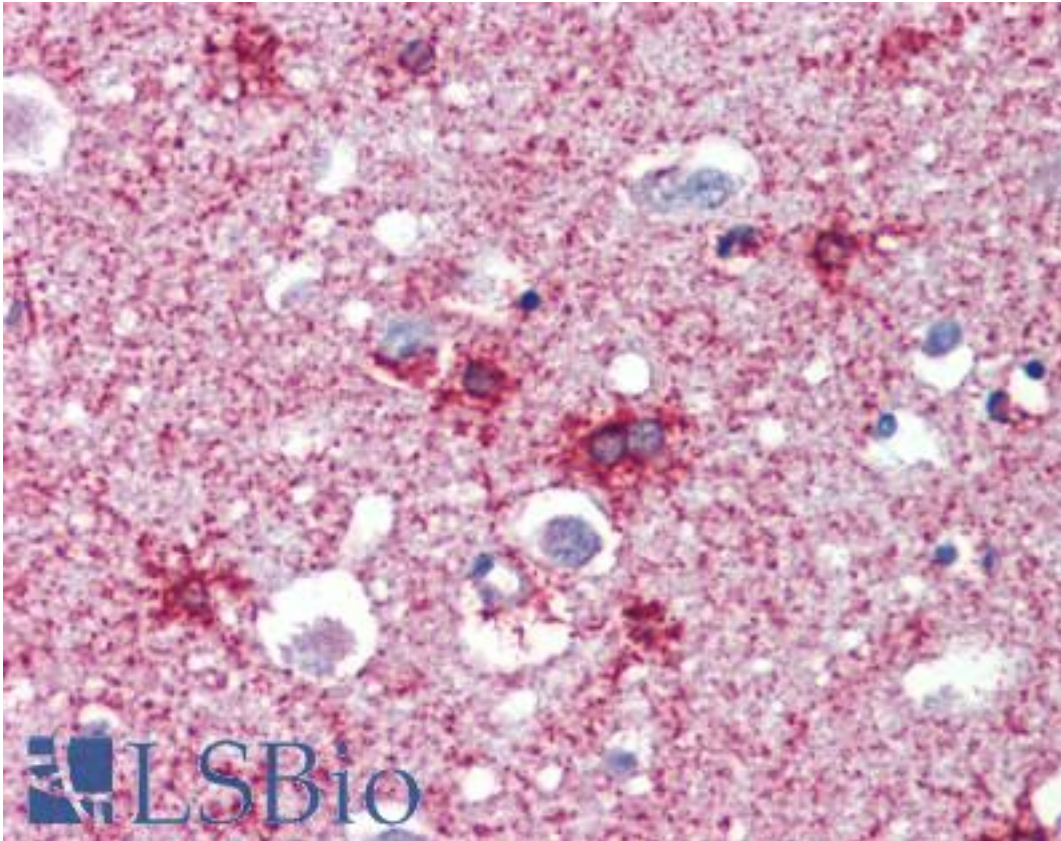
Anti-SEPT2 / Septin 2 antibody IHC of human breast. Immunohistochemistry of formalin-fixed, paraffin-embedded tissue after heat-induced antigen retrieval. Antibody LS-B3607 concentration 2.5 ug/ml.

Immunohistochemistry Image:



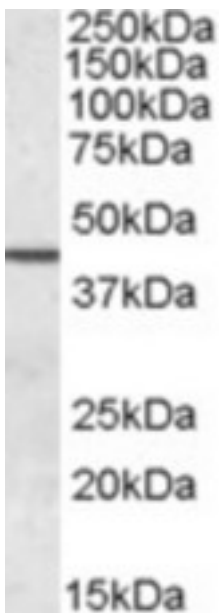
Anti-SEPT2 / Septin 2 antibody IHC of human tonsil. Immunohistochemistry of formalin-fixed, paraffin-embedded tissue after heat-induced antigen retrieval. Antibody LS-B3607 concentration 2.5 ug/ml.

Immunohistochemistry Image:



Anti-SEPT2 / Septin 2 antibody IHC of human brain, cortex. Immunohistochemistry of formalin-fixed, paraffin-embedded tissue after heat-induced antigen retrieval. Antibody LS-B3607 concentration 2.5 ug/ml.

Western Blot Image:



Antibody (0.05 ug/ml) staining of Human Testis lysate (35 ug protein in RIPA buffer). Primary incubation was 1 hour. Detected by chemiluminescence.

Requested From:	Japan
Laboratory Reagent For In Vitro Research Use Only	
Not for resale without prior written consent from LifeSpan BioSciences, Inc.	
Created on 9/23/2014	
© 2014 LifeSpan BioSciences	