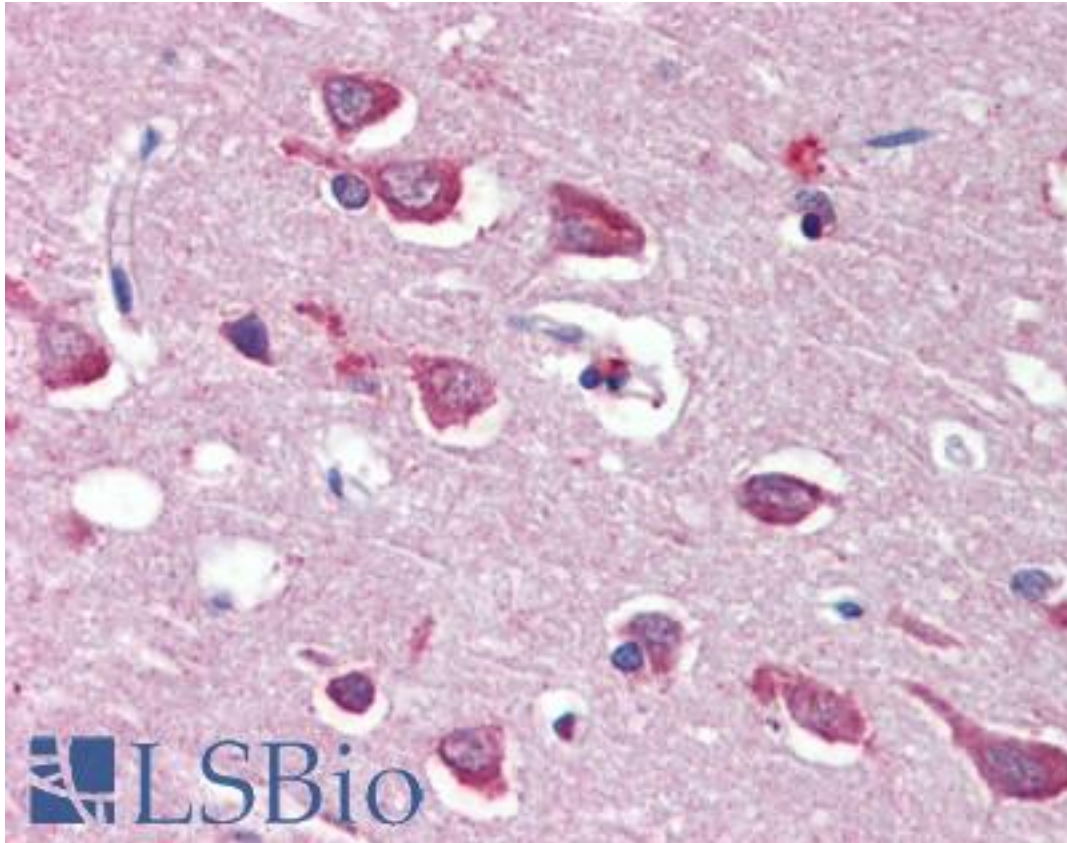


GRIA4 / GLUR4 Goat anti-Human Polyclonal (Internal) Antibody - LS-B3606 - LSBio

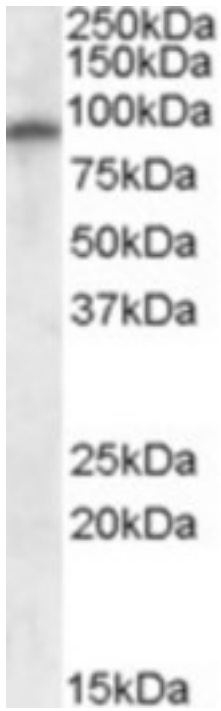
CatalogID:	LS-B3606
Validation:	This antibody replaces catalog number LS-C87266. It has been validated for use in the following assays: IHC-Fr.
Target:	glutamate receptor, ionotropic, AMPA 4 (GRIA4)
Synonyms:	GRIA4 Antibody, GluA4 Antibody, GluR-4 Antibody, GLUR4 Antibody, GLUR4C Antibody, Glutamate receptor type d Antibody, GluR-D Antibody, GLURD Antibody, Glutamate receptor 4 Antibody
Family / Subfamily:	Ion Channel / Glutamate receptor - ionotropic (NMDA receptor)
Host	GRIA4 antibody was produced in Goat
Clonality:	Polyclonal
Immunogen Species:	GRIA4 / GLUR4 antibody was raised against Human
Antigen Type:	Synthetic peptide
Immunogen:	GRIA4 / GLUR4 antibody was raised against synthetic peptide C-KKLDQREYPGSETP from an internal region of human GRIA4 / GLUR4 (NP_000820.3; NP_001070711.1; NP_001070712.1). Percent identity by BLAST analysis: Human, Chimpanzee, Gorilla, Gibbon, Monkey, Marmoset, Mouse, Rat, Elephant, Panda, Dog, Bat, Bovine, Horse, Rabbit, Opossum, Turkey, Chicken, Platypus (100%); Lizard (93%); Xenopus, Stickleback, Pufferfish, Zebrafish, Trachemys (86%).
Specificity:	Human GRIA4 / GLUR4. This antibody is expected to recognize all reported isoforms (NP_000820.3; NP_001070711.1; NP_001070712.1). Reported variants NP_001070712.1 and NP_001106283.1 represent identical protein.
Epitope:	Internal
Reactivity:	Human, Chimpanzee, Gorilla, Gibbon, Monkey, Mouse, Rat, Bat, Bovine, Dog, Horse, Rabbit, Chicken
Purification:	Immunoaffinity purified
Presentation:	Tris-buffered saline, pH 7.3, 0.5% BSA, 0.02% sodium azide
Recommended Storage:	Store at -20°C. Minimize freezing and thawing.
Usage Summary:	Immunohistochemistry: LS-B3606 was validated for use in immunohistochemistry on a panel of 21 formalin-fixed, paraffin-embedded (FFPE) human tissues after heat induced antigen retrieval in pH 6.0 citrate buffer. After incubation with the primary antibody, slides were incubated with biotinylated secondary antibody, followed by alkaline phosphatase-streptavidin and chromogen. The stained slides were evaluated by a pathologist to confirm staining specificity. The optimal working concentration for LS-B3606 was determined to be 5 µg/ml. Peptide ELISA: antibody detection limit dilution 1:128000. Western Blot: Approx. 90 kD band observed in Human Brain (Cerebellum) lysates (calculated MW of 99.2 kD according to NP_001070711.1). Recommended concentration: 0.3-1 µg/ml.
Uses:	IHC - Paraffin (5 µg/ml), Western blot (0.3 - 1 µg/ml), ELISA (1:128000) & (0.3 - 1 µg/ml) (Optimal dilution to be determined by the researcher)
Size:	50 µg
Concentration:	0.5 mg/ml

Immunohistochemistry Image:



Anti-GRIA4 / GLUR4 antibody IHC of human brain, cortex. Immunohistochemistry of formalin-fixed, paraffin-embedded tissue after heat-induced antigen retrieval. Antibody LS-B3606 concentration 5 ug/ml.

Western Blot Image:



Antibody (0.3 ug/ml) staining of Human Cerebellum lysate (35 ug protein in RIPA buffer).
Primary incubation was 1 hour. Detected by chemiluminescence.

Requested From:

Japan

Laboratory Reagent For In Vitro Research Use Only

Not for resale without prior written consent from LifeSpan BioSciences, Inc.

Created on 9/23/2014

© 2014 LifeSpan BioSciences