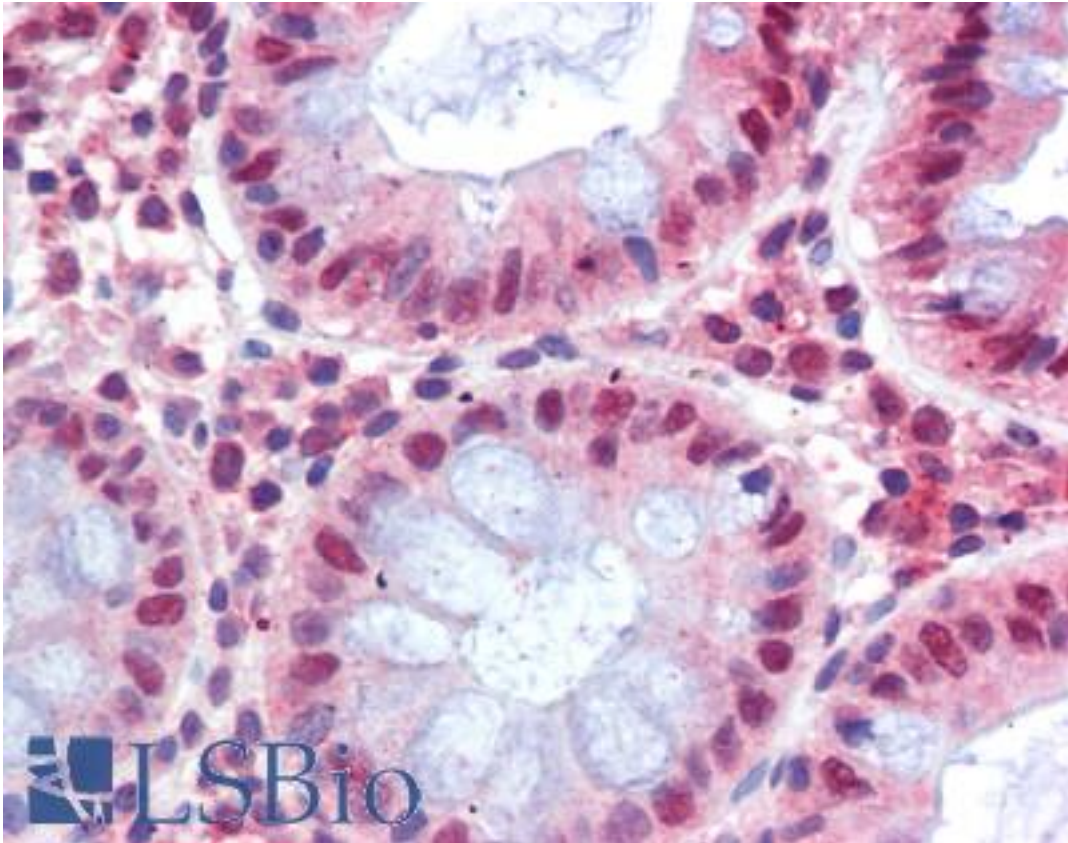


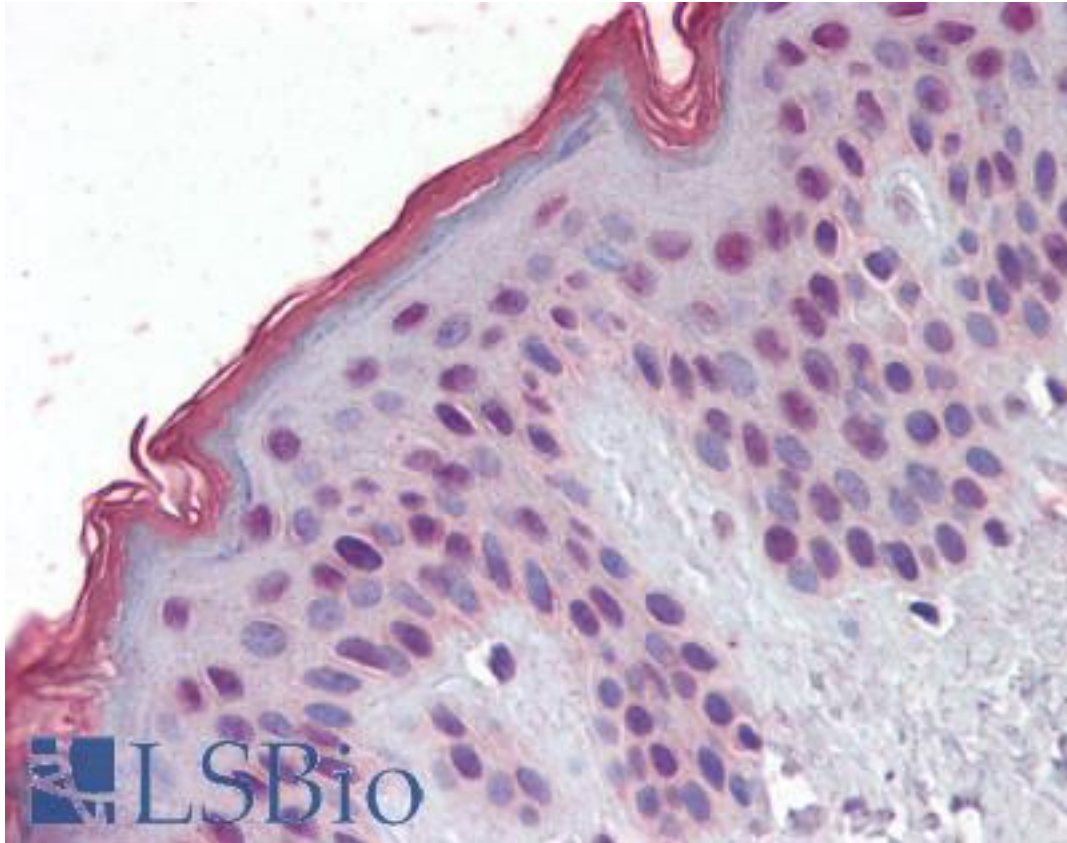
MBD2 Goat anti-Human Polyclonal (Internal) Antibody - LS-B3603 - LSBio	
CatalogID:	LS-B3603
Validation:	This antibody replaces catalog number LS-C55093. It has been validated for use in the following assays: IHC-P.
Target:	methyl-CpG binding domain protein 2 (MBD2)
Synonyms:	MBD2 Antibody, Demethylase Antibody, DMTase Antibody, NY-CO-41 Antibody
Host	MBD2 antibody was produced in Goat
Clonality:	Polyclonal
Immunogen Species:	MBD2 antibody was raised against Human
Antigen Type:	Synthetic peptide
Immunogen:	MBD2 antibody was raised against synthetic peptide C-RNDPLNQNKGKPDLN from an internal region of human MBD2 (NP_003918.1). Percent identity by BLAST analysis: Human, Gorilla, Gibbon, Monkey, Marmoset, Mouse, Rat, Hamster, Elephant, Panda, Dog, Bat, Bovine, Horse, Rabbit, Pig, Opossum (100%); Xenopus (93%); Zebrafish (80%).
Specificity:	Human MBD2. This antibody is expected to resognize isoform 1 (NP_003918.1) only.
Epitope:	Internal
Reactivity:	Human, Gorilla, Gibbon, Monkey, Mouse, Rat, Bat, Bovine, Dog, Hamster, Horse, Pig, Rabbit
Predicted Reactivity:	Xenopus
Purification:	Immunoaffinity purified
Presentation:	Tris-buffered saline, pH 7.3, 0.5% BSA, 0.02% sodium azide
Recommended Storage:	Store at -20°C. Minimize freezing and thawing.
Usage Summary:	Immunohistochemistry: LS-B3603 was validated for use in immunohistochemistry on a panel of 21 formalin-fixed, paraffin-embedded (FFPE) human tissues after heat induced antigen retrieval in pH 6.0 citrate buffer. After incubation with the primary antibody, slides were incubated with biotinylated secondary antibody, followed by alkaline phosphatase-streptavidin and chromogen. The stained slides were evaluated by a pathologist to confirm staining specificity. The optimal working concentration for LS-B3603 was determined to be 2.5 ug/ml.
Uses:	IHC - Paraffin (2.5 µg/ml), Western blot, ELISA (1:64000) (Optimal dilution to be determined by the researcher)
Size:	50 µg
Concentration:	0.5 mg/ml

Immunohistochemistry Image:



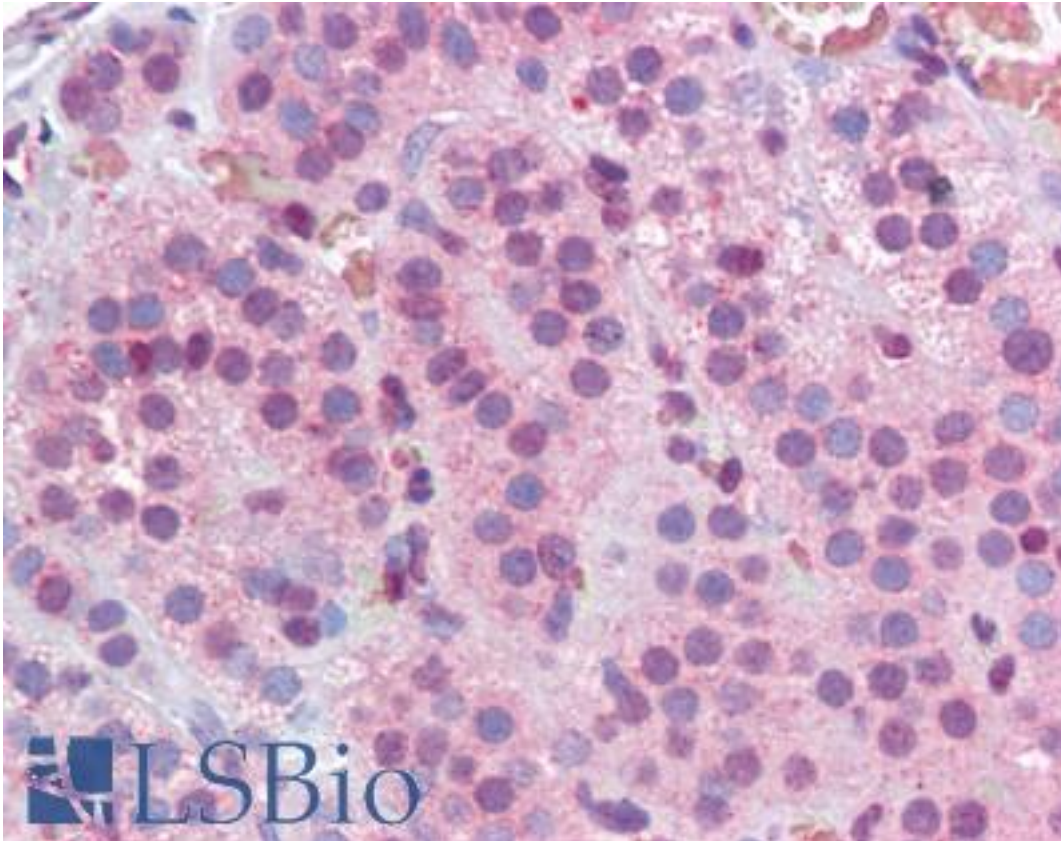
Anti-MBD2 antibody IHC of human colon. Immunohistochemistry of formalin-fixed, paraffin-embedded tissue after heat-induced antigen retrieval. Antibody LS-B3603 concentration 2.5 ug/ml.

Immunohistochemistry Image:



Anti-MBD2 antibody IHC of human skin. Immunohistochemistry of formalin-fixed, paraffin-embedded tissue after heat-induced antigen retrieval. Antibody LS-B3603 concentration 2.5 ug/ml.

Immunohistochemistry Image:



Anti-MBD2 antibody IHC of human adrenal. Immunohistochemistry of formalin-fixed, paraffin-embedded tissue after heat-induced antigen retrieval. Antibody LS-B3603 concentration 2.5 ug/ml.

Western Blot Image:



Antibody (0.3 ug/ml) staining of Jurkat cell lysate (35 ug protein in RIPA buffer). Primary incubation was 1 hour. Detected by chemiluminescence.

Requested From:	Japan
Laboratory Reagent For In Vitro Research Use Only	
Not for resale without prior written consent from LifeSpan BioSciences, Inc.	
Created on 9/23/2014	
© 2014 LifeSpan BioSciences	