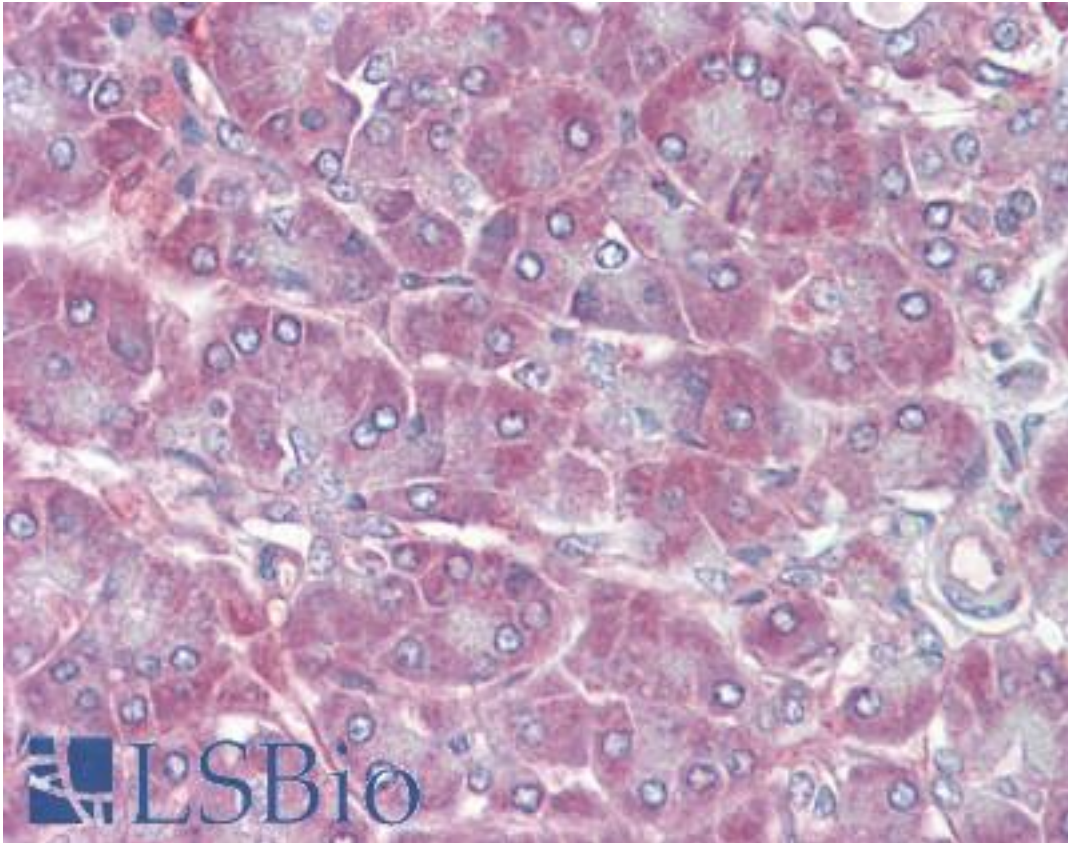


RBP1 / CRBP Goat anti-Human Polyclonal (C-Terminus) Antibody - LS-B3600 - LSBio

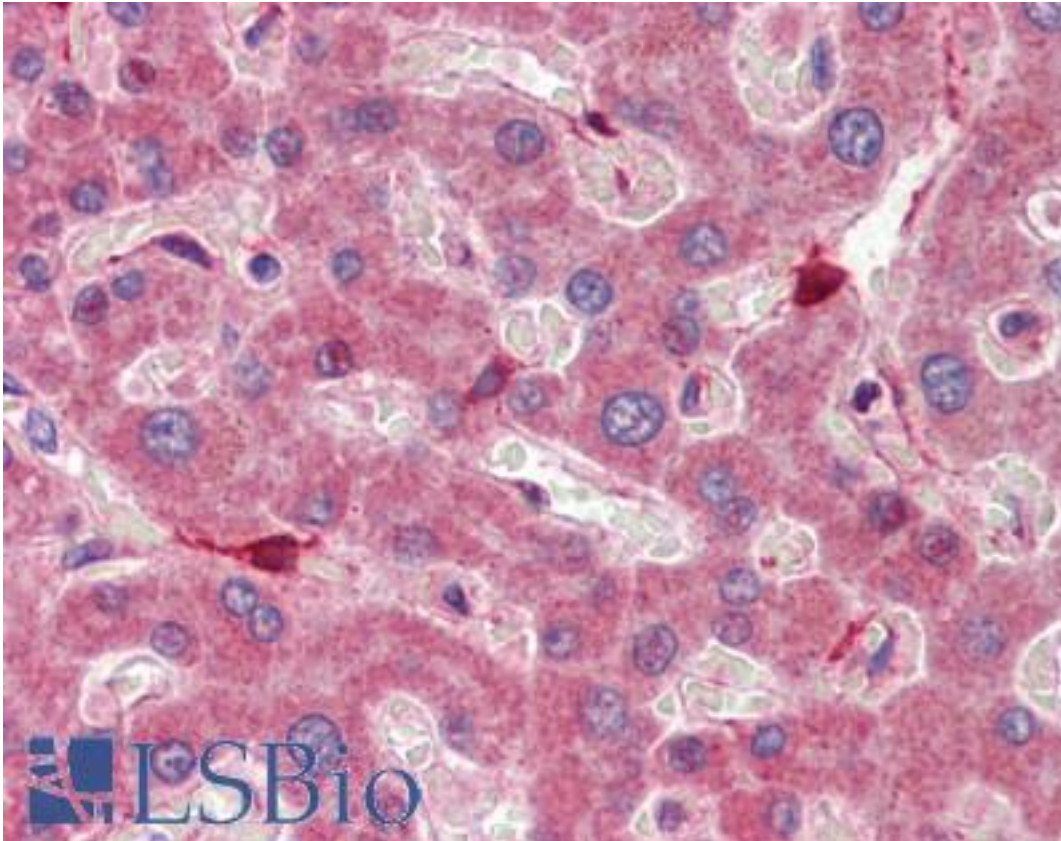
CatalogID:	LS-B3600
Validation:	This antibody replaces catalog number LS-C20206. It has been validated for use in the following assays: IHC-P.
Target:	retinol binding protein 1, cellular (RBP1)
Synonyms:	RBP1 Antibody, CRABP-I Antibody, CRBP Antibody, CRBP-I Antibody, RBPC Antibody, Retinol-binding protein 1 Antibody, CRBP1 Antibody, CRBPI Antibody
Host	RBP1 antibody was produced in Goat
Clonality:	Polyclonal
Immunogen Species:	RBP1 / CRBP antibody was raised against Human
Antigen Type:	Synthetic peptide
Immunogen:	RBP1 / CRBP antibody was raised against synthetic peptide VEGVVCKQVFKKVVQ from the C-terminus of human RBP1 (NP_002890.1). Percent identity by BLAST analysis: Human, Gorilla, Gibbon, Monkey, Marmoset (100%); Elephant, Bovine, Dog, Bat, Rabbit, Platypus (93%); Horse, Pig, Opossum (86%).
Specificity:	Human RBP1.
Epitope:	C-Terminus
Reactivity:	Human, Gorilla, Gibbon, Monkey
Predicted Reactivity:	Bat, Bovine, Dog, Rabbit
Purification:	Immunoaffinity purified
Presentation:	Tris-buffered saline, pH 7.3, 0.5% BSA, 0.02% sodium azide
Recommended Storage:	Store at -20°C. Minimize freezing and thawing.
Usage Summary:	Immunohistochemistry: LS-B3600 was validated for use in immunohistochemistry on a panel of 21 formalin-fixed, paraffin-embedded (FFPE) human tissues after heat induced antigen retrieval in pH 6.0 citrate buffer. After incubation with the primary antibody, slides were incubated with biotinylated secondary antibody, followed by alkaline phosphatase-streptavidin and chromogen. The stained slides were evaluated by a pathologist to confirm staining specificity. The optimal working concentration for LS-B3600 was determined to be 5 ug/ml.
Uses:	IHC - Paraffin (5 µg/ml), Western blot (0.1 - 0.3 µg/ml), ELISA (1:16000) (Optimal dilution to be determined by the researcher)
Size:	50 µg
Concentration:	0.5 mg/ml

Immunohistochemistry Image:



Anti-RBP1 antibody IHC of human pancreas. Immunohistochemistry of formalin-fixed, paraffin-embedded tissue after heat-induced antigen retrieval. Antibody LS-B3600 concentration 5 ug/ml.

Immunohistochemistry Image:



Anti-RBP1 antibody IHC of human liver. Immunohistochemistry of formalin-fixed, paraffin-embedded tissue after heat-induced antigen retrieval. Antibody LS-B3600 concentration 5 ug/ml.

Western Blot Image:



(0.1 ug/ml) Staining of NIH 3T3 lysate (35 ug protein in RIPA buffer). Primary incubation was 1 hour. Detected by chemiluminescence.

Requested From:

Japan

Laboratory Reagent For In Vitro Research Use Only

Not for resale without prior written consent from LifeSpan BioSciences, Inc.

Created on 9/23/2014

© 2014 LifeSpan BioSciences