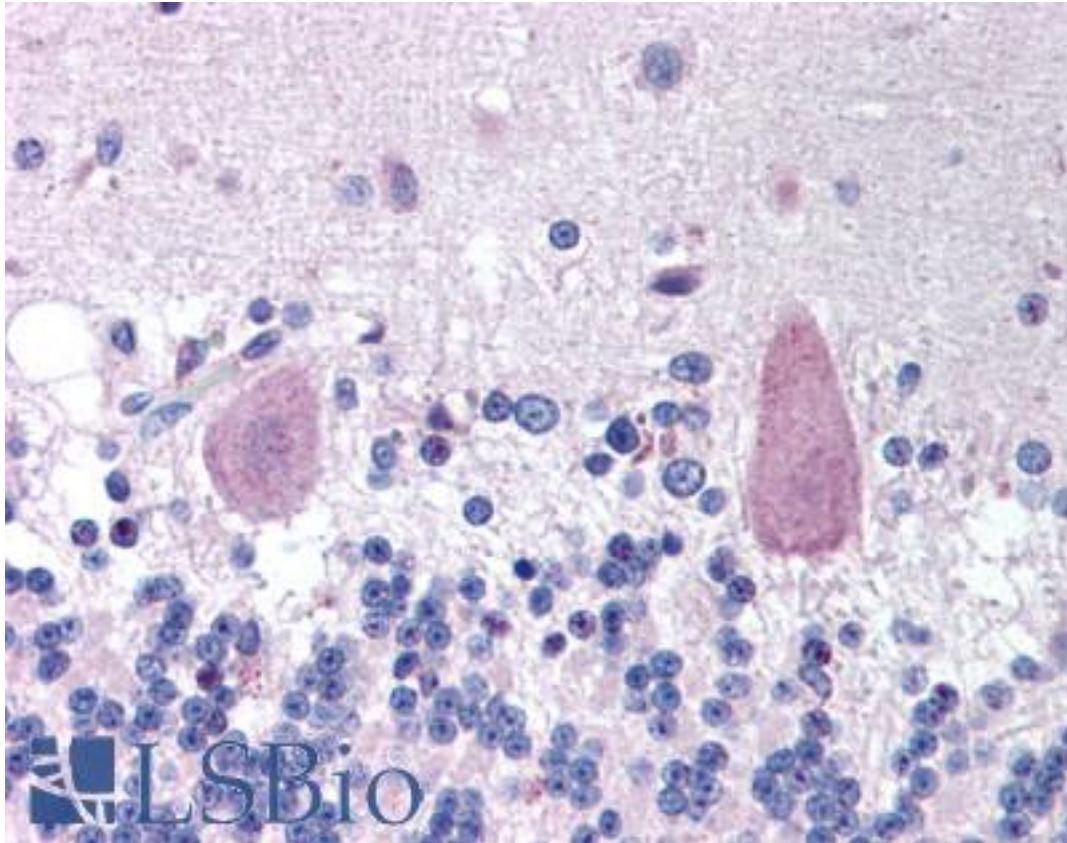


**HTT / Huntingtin Rabbit anti-Human Polyclonal (pSer421) Antibody - LS-B36 - LSBio**

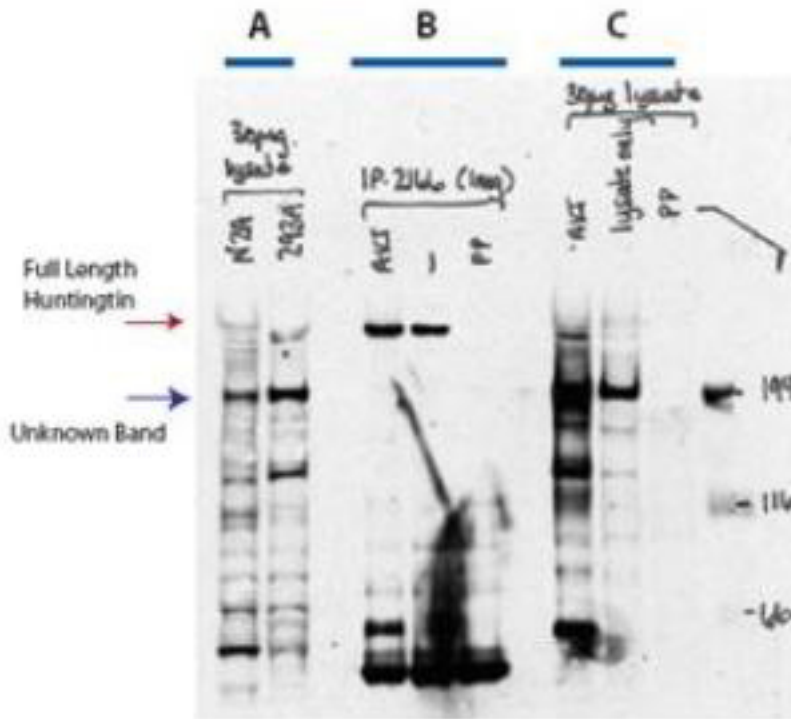
<b>CatalogID:</b>	LS-B36
<b>Validation:</b>	This antibody replaces catalog number LS-C18819. It has been validated for use in the following assays: IHC.
<b>Target:</b>	huntingtin (HTT)
<b>Synonyms:</b>	HTT Antibody, Huntingtin Antibody, Huntington disease protein Antibody, IT15 Antibody, HD Antibody, HD protein Antibody
<b>Family / Subfamily:</b>	Hungtintin / Not assigned-Other
<b>Host</b>	HTT antibody was produced in Rabbit
<b>Clonality:</b>	Polyclonal
<b>Immunogen Species:</b>	HTT / Huntingtin antibody was raised against Human
<b>Antigen Type:</b>	Synthetic peptide
<b>Immunogen:</b>	HTT / Huntingtin antibody was raised against synthetic peptide from human HTT / Huntingtin.
<b>Specificity:</b>	Amino acids 416 to 424 of Human huntingtin protein phosphorylated at Ser421
<b>Epitope:</b>	pSer421
<b>Reactivity:</b>	Human
<b>Purification:</b>	Immunoaffinity purified
<b>Presentation:</b>	0.02 M potassium phosphate, 0.15 M sodium chloride, pH 7.2, 0.01% sodium azide.
<b>Recommended Storage:</b>	Long term: -20°C; Short term: +4°C. Avoid repeat freeze-thaw cycles.
<b>Usage Summary:</b>	Immunohistochemistry: LS-B36 was validated for use in immunohistochemistry on a panel of 21 formalin-fixed, paraffin-embedded (FFPE) human tissues after heat induced antigen retrieval in pH 6.0 citrate buffer. After incubation with the primary antibody, slides were incubated with biotinylated secondary antibody, followed by alkaline phosphatase-streptavidin and chromogen. The stained slides were evaluated by a pathologist to confirm staining specificity. The optimal working concentration for LS-B36 was determined to be 10-20 ug/ml.
<b>Uses:</b>	IHC - Paraffin (10 - 20 µg/ml), Western blot (1:500 - 1:3000), ELISA (1:10000 - 1:40000) (Optimal dilution to be determined by the researcher)
<b>Size:</b>	50 µg
<b>Concentration:</b>	0.8 mg/ml

**Immunohistochemistry Image:**



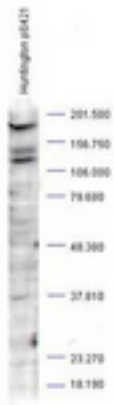
Anti-HTT / Huntingtin antibody IHC of human brain cerebellum. Immunohistochemistry of formalin-fixed, paraffin-embedded tissue after heat-induced antigen retrieval. Antibody LS-B36 concentration 20 ug/ml.

**Western Blot Image:**



Anti-Huntingtin pS421 Antibody - Western Blot. Western blot analysis after AKT and phosphatase treatment is shown using Affinity Purified anti-Huntingtin pS421 antibody. In A) untreated lysates from N2A and 293A cells were stained directly using anti-Huntingtin pS421 antibody. Full length staining of Huntingtin is noted, albeit at low levels of expression, as well as a strongly staining band at 200 kD that may represent staining of truncated protein. In B) staining is shown after immunoprecipitation using a monoclonal antibody (Mab2166) followed by AKT treatment (to phosphorylate), along with untreated, and phosphatase (PP) treated (dephosphorylate) immunoprecipitated. Full length phosphorylated huntingtin is clearly detected in these immunopurified samples (except dephosphorylated). In C) lysates are treated directly with AKT or PP to alter the phosphorylation status of Htt. Personal communication, Simon Warby, CMMT, Vancouver, BC.

**Western Blot Image:**



Anti-Huntingtin pS421 Antibody - Western Blot. Western blot analysis is shown using Affinity Purified anti-Huntingtin pS421 antibody to detect endogenous protein present in an unstimulated human PC-3 whole cell lysate (arrowhead). Comparison to a molecular weight marker indicates a band of ~190 kD corresponding to truncated human Huntingtin protein. The blot was incubated with a 1:1000 dilution of the antibody at room temperature followed by detection using standard techniques. Personal communication,.

**Requested From:**

Japan

Laboratory Reagent For In Vitro Research Use Only

Not for resale without prior written consent from LifeSpan BioSciences, Inc.

Created on 9/23/2014

© 2014 LifeSpan BioSciences