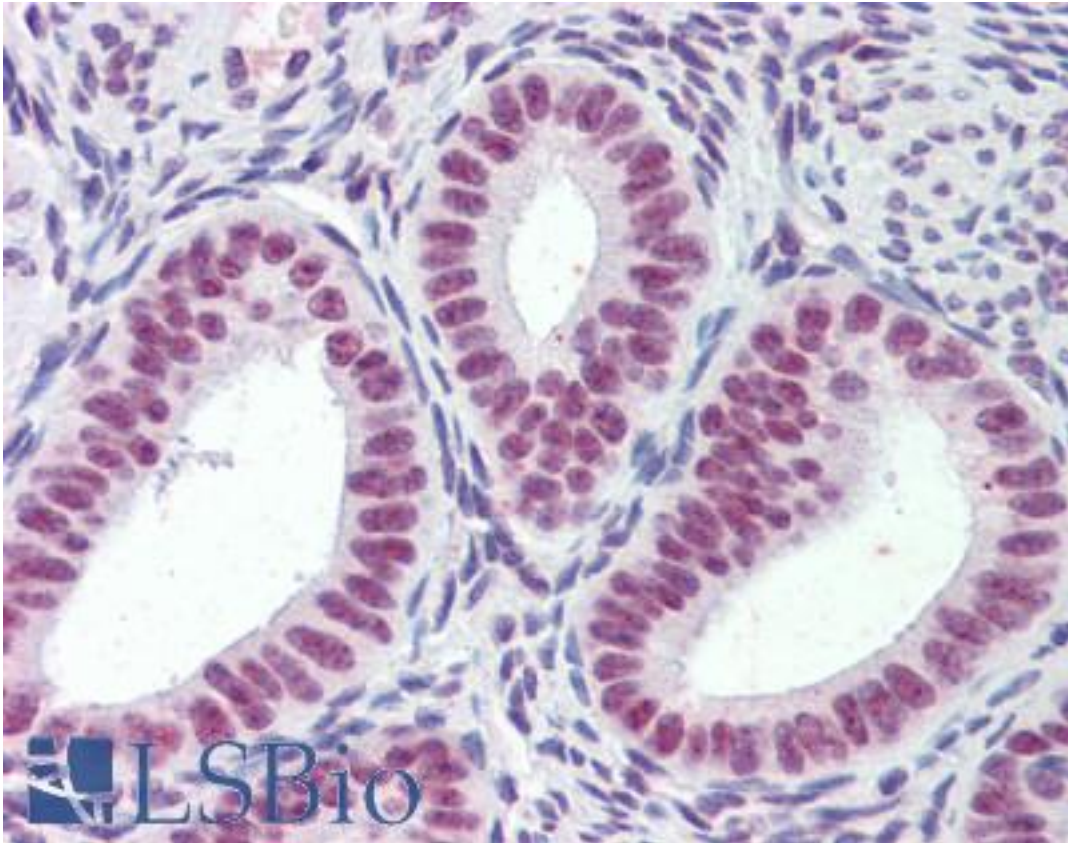


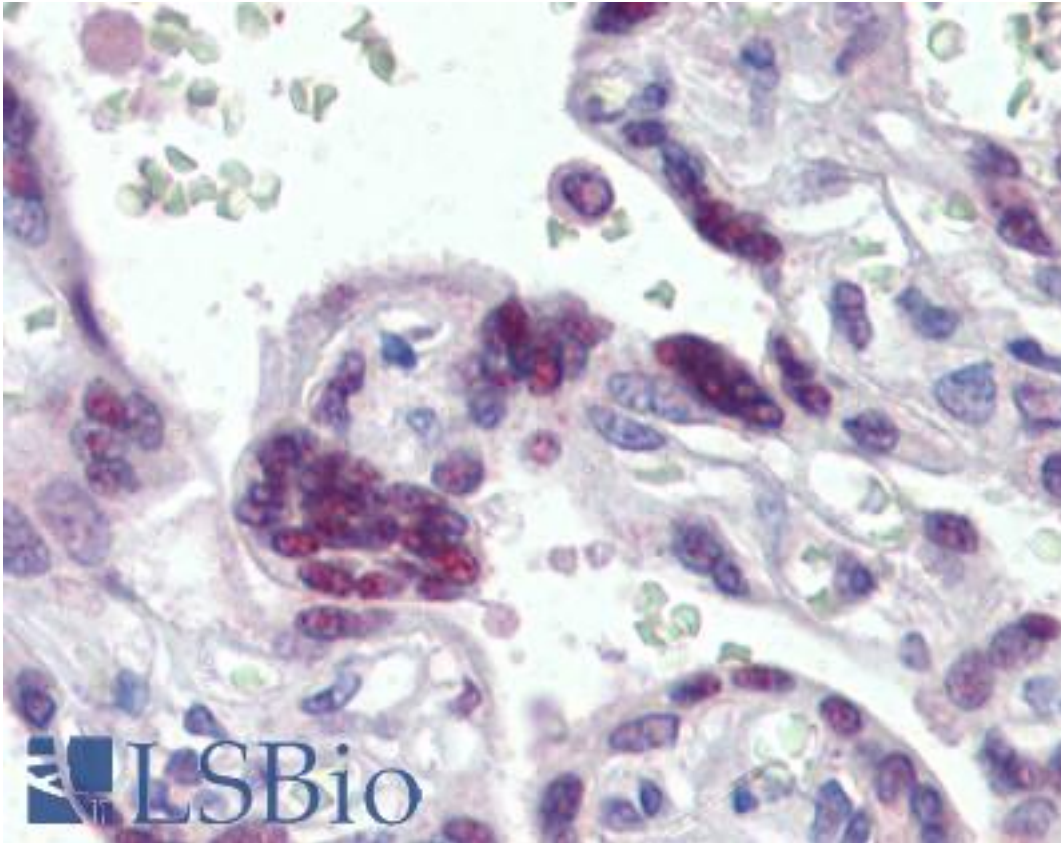
MORF4L1 / MRG15 Goat anti-Human Polyclonal (N-Terminus) Antibody - LS-B3597 - LSBio	
<b>CatalogID:</b>	LS-B3597
<b>Validation:</b>	This antibody replaces catalog number LS-C55117. It has been validated for use in the following assays: IHC-P.
<b>Target:</b>	mortality factor 4 like 1 (MORF4L1)
<b>Synonyms:</b>	MORF4L1 Antibody, Eaf3 Antibody, Mortality factor 4 like 1 Antibody, HsT17725 Antibody, Protein MSL3-1 Antibody, MEAF3 Antibody, MORFRG15 Antibody, MRG15 Antibody, FWP006 Antibody, MORF-related gene 15 protein Antibody, S863-6 Antibody
<b>Host</b>	MORF4L1 antibody was produced in Goat
<b>Clonality:</b>	Polyclonal
<b>Immunogen Species:</b>	MORF4L1 / MRG15 antibody was raised against Human
<b>Antigen Type:</b>	Synthetic peptide
<b>Immunogen:</b>	MORF4L1 / MRG15 antibody was raised against synthetic peptide (APKQDPKPKFQEG-C) from N-terminus of human MORF4L1. Percent identity by BLAST analysis: Human, Gorilla, Orangutan, Gibbon, Monkey, Marmoset, Mouse, Rat, Elephant, Bovine, Pig, Opossum, Trout, Salmon, Smelt, Sablefish, Stickleback, Pufferfish, Zebrafish (100%); Hamster, Rabbit, Xenopus (92%).
<b>Specificity:</b>	Human MORF4L1 / MRG15.
<b>Epitope:</b>	N-Terminus
<b>Reactivity:</b>	Human, Gorilla, Orangutan, Gibbon, Monkey, Mouse, Rat, Bovine, Pig, Zebrafish
<b>Predicted Reactivity:</b>	Hamster, Rabbit, Xenopus
<b>Purification:</b>	Immunoaffinity purified
<b>Presentation:</b>	Tris-buffered saline, pH 7.3, 0.5% BSA, 0.02% sodium azide
<b>Recommended Storage:</b>	Store at -20°C. Minimize freezing and thawing.
<b>Usage Summary:</b>	Immunohistochemistry: LS-B3597 was validated for use in immunohistochemistry on a panel of 21 formalin-fixed, paraffin-embedded (FFPE) human tissues after heat induced antigen retrieval in pH 6.0 citrate buffer. After incubation with the primary antibody, slides were incubated with biotinylated secondary antibody, followed by alkaline phosphatase-streptavidin and chromogen. The stained slides were evaluated by a pathologist to confirm staining specificity. The optimal working concentration for LS-B3597 was determined to be 2.5 ug/ml.
<b>Uses:</b>	IHC - Paraffin (2.5 µg/ml), ELISA (1:64000) (Optimal dilution to be determined by the researcher)
<b>Size:</b>	50 µg
<b>Concentration:</b>	0.5 mg/ml

**Immunohistochemistry Image:**



Anti-MORF4L1 / MRG15 antibody IHC of human uterus. Immunohistochemistry of formalin-fixed, paraffin-embedded tissue after heat-induced antigen retrieval. Antibody LS-B3597 concentration 2.5 ug/ml.

**Immunohistochemistry Image:**



Anti-MORF4L1 / MRG15 antibody IHC of human placenta. Immunohistochemistry of formalin-fixed, paraffin-embedded tissue after heat-induced antigen retrieval. Antibody LS-B3597 concentration 2.5 ug/ml.

**Requested From:**

Japan

Laboratory Reagent For In Vitro Research Use Only

Not for resale without prior written consent from LifeSpan BioSciences, Inc.

Created on 9/23/2014

© 2014 LifeSpan BioSciences