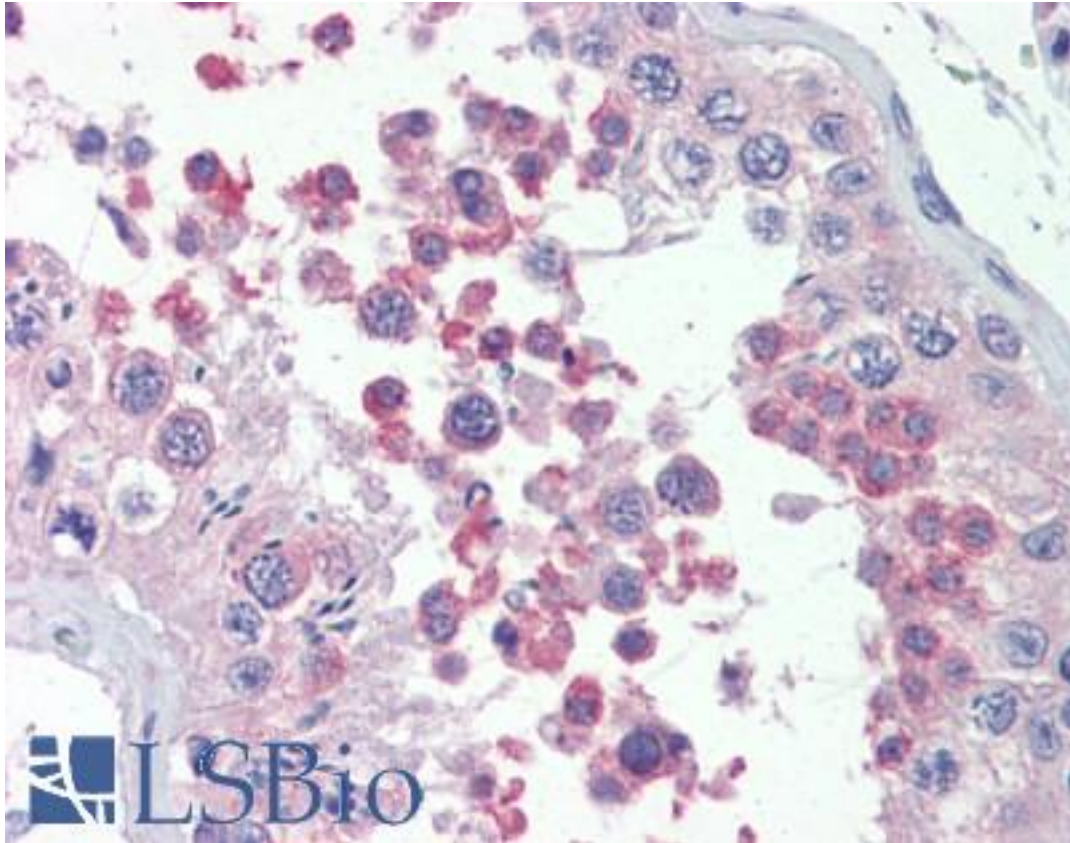


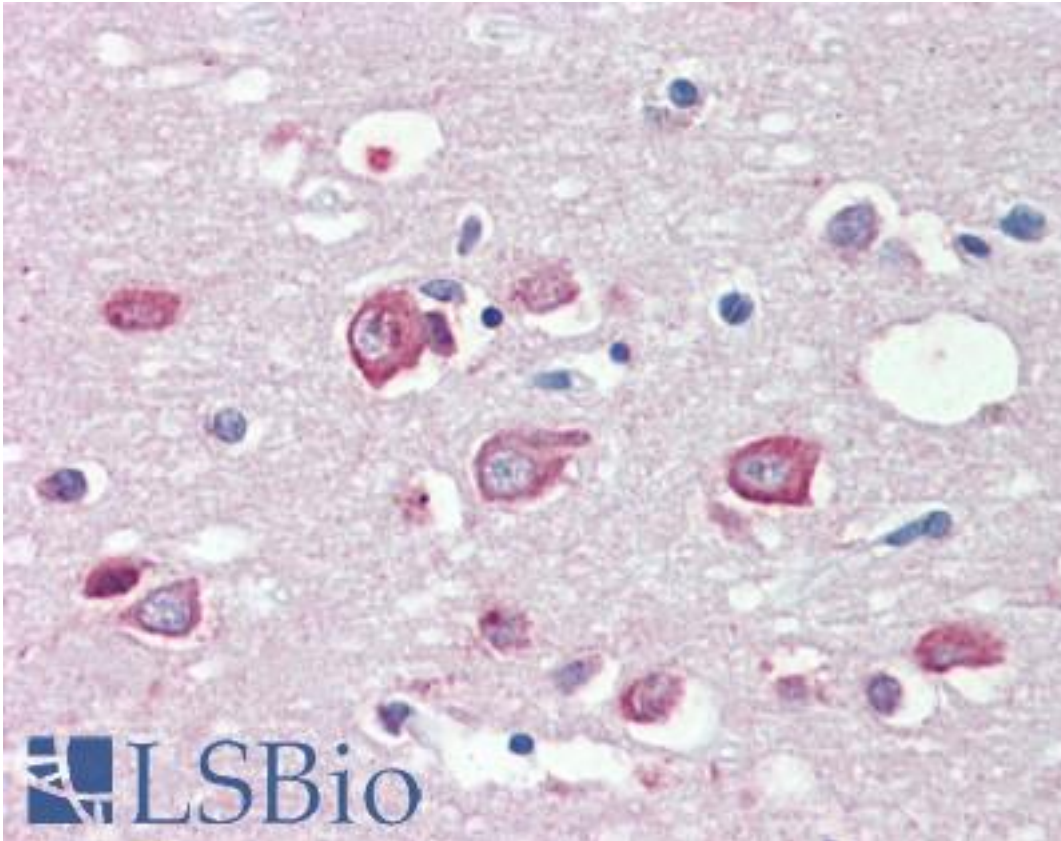
KMT2B / MLL4 Goat anti-Human Polyclonal (C-Terminus) Antibody - LS-B3595 - LSBio	
CatalogID:	LS-B3595
Validation:	This antibody replaces catalog number LS-C55111. It has been validated for use in the following assays: IHC-P.
Target:	lysine (K)-specific methyltransferase 2B (KMT2B)
Synonyms:	KMT2B Antibody, Lysine N-methyltransferase 2D Antibody, MLL4 Antibody, HRX2 Antibody, KMT2D Antibody, WBP-7 Antibody, WW domain binding protein 7 Antibody, Trithorax homologue 2 Antibody, WBP7 Antibody, KIAA0304 Antibody, Lysine N-methyltransferase 2B Antibody, Trithorax homolog 2 Antibody, TRX2 Antibody, WW domain-binding protein 7 Antibody
Host	KMT2B antibody was produced in Goat
Clonality:	Polyclonal
Immunogen Species:	KMT2B / MLL4 antibody was raised against Human
Antigen Type:	Synthetic peptide
Immunogen:	KMT2B / MLL4 antibody was raised against synthetic peptide CNCGAKRCRRFLN from the C-terminus of human MLL4 (NP_055542.1). Percent identity by BLAST analysis: Human, Gorilla, Gibbon, Monkey, Marmoset, Mouse, Rat, Bovine, Pig, Zebrafish (100%); Xenopus, Pufferfish (92%); Chimpanzee, Elephant, Panda, Dog, Bat, Horse, Opossum, Turkey, Chicken (85%).
Specificity:	Human MLL4.
Epitope:	C-Terminus
Reactivity:	Human, Gorilla, Gibbon, Monkey, Mouse, Rat, Bovine, Pig, Zebrafish
Predicted Reactivity:	Xenopus
Purification:	Immunoaffinity purified
Presentation:	Tris-buffered saline, pH 7.3, 0.5% BSA, 0.02% sodium azide
Recommended Storage:	Store at -20°C. Minimize freezing and thawing.
Usage Summary:	Immunohistochemistry: LS-B3595 was validated for use in immunohistochemistry on a panel of 21 formalin-fixed, paraffin-embedded (FFPE) human tissues after heat induced antigen retrieval in pH 6.0 citrate buffer. After incubation with the primary antibody, slides were incubated with biotinylated secondary antibody, followed by alkaline phosphatase-streptavidin and chromogen. The stained slides were evaluated by a pathologist to confirm staining specificity. The optimal working concentration for LS-B3595 was determined to be 5 µg/ml.
Uses:	IHC - Paraffin (5 µg/ml), ELISA (1:128000) (Optimal dilution to be determined by the researcher)
Size:	50 µg
Concentration:	0.5 mg/ml

Immunohistochemistry Image:



Anti-MLL4 antibody IHC of human testis. Immunohistochemistry of formalin-fixed, paraffin-embedded tissue after heat-induced antigen retrieval. Antibody LS-B3595 concentration 5 ug/ml.

Immunohistochemistry Image:



Anti-MLL4 antibody IHC of human brain, cortex. Immunohistochemistry of formalin-fixed, paraffin-embedded tissue after heat-induced antigen retrieval. Antibody LS-B3595 concentration 5 ug/ml.

Requested From:

Japan

Laboratory Reagent For In Vitro Research Use Only

Not for resale without prior written consent from LifeSpan BioSciences, Inc.

Created on 9/23/2014

© 2014 LifeSpan BioSciences