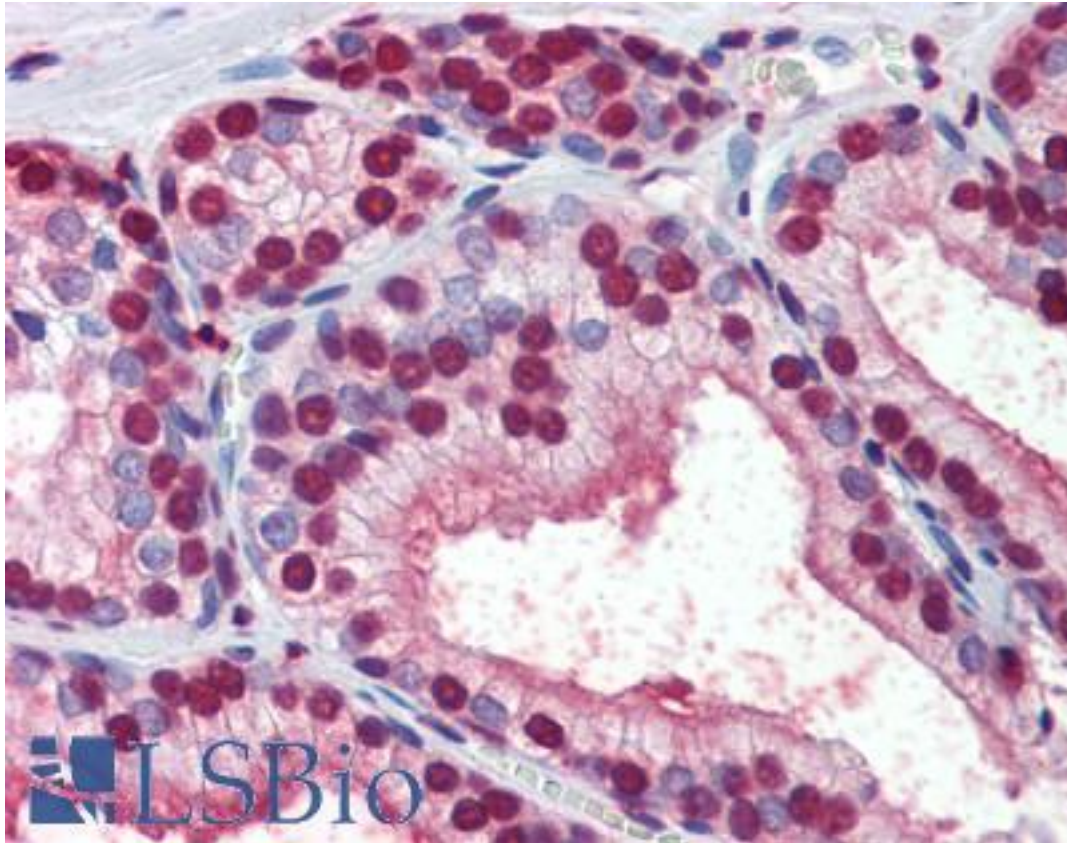


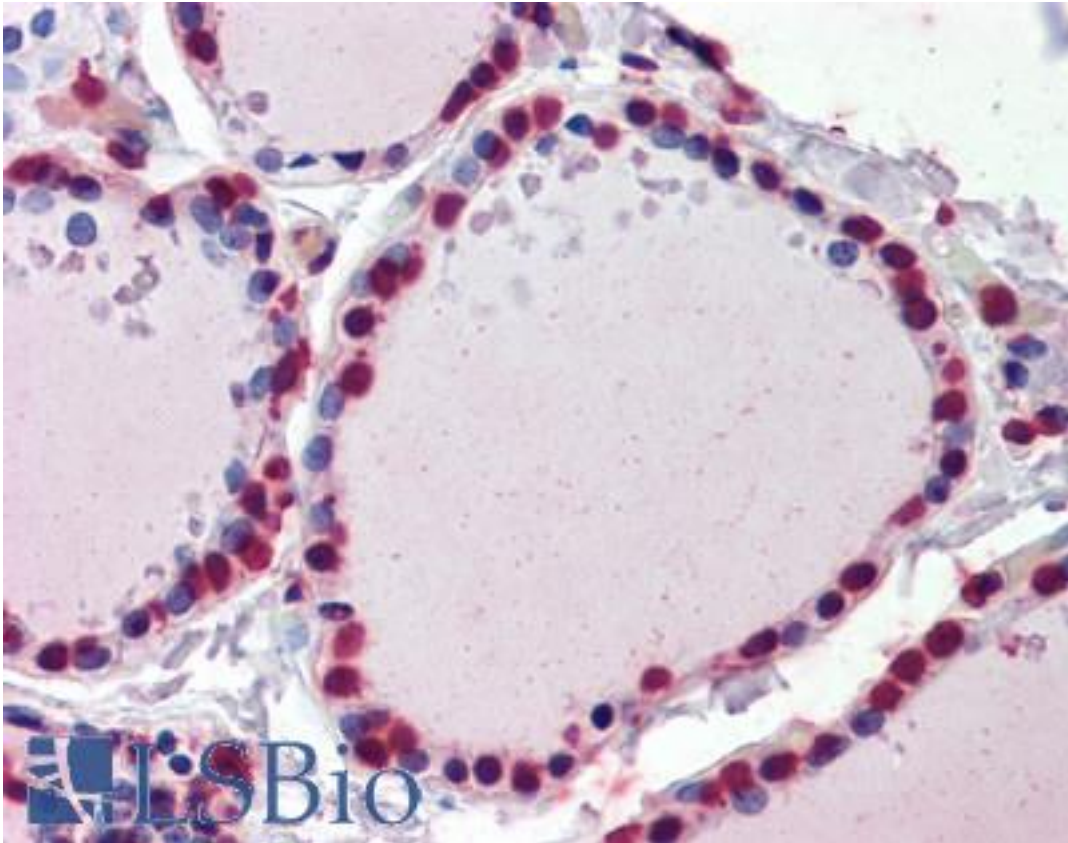
CRABP1 / CRABP Mouse anti-Human Monoclonal (AT1A1) Antibody - LS-B3590 - LSBio	
CatalogID:	LS-B3590
Validation:	This antibody replaces catalog number LS-C103498. It has been validated for use in the following assays: IHC-P.
Target:	cellular retinoic acid binding protein 1 (CRABP1)
Synonyms:	CRABP1 Antibody, CRABP-I Antibody, CRABPI Antibody, CRABP Antibody
Host	CRABP1 antibody was produced in Mouse
Clonality:	Monoclonal
Isotype:	IgG2b,k
Clone Name:	AT1A1
Immunogen Species:	CRABP1 / CRABP antibody was raised against Human
Immunogen:	CRABP1 / CRABP antibody was raised against recombinant human CRABP1 (1-137aa) purified from E. coli
Specificity:	human CRABP1 (1-137aa)
Reactivity:	Human, Mouse
Purification:	Protein G purified
Presentation:	PBS, pH 7.4, 0.1% sodium azide
Recommended Storage:	Aliquot and store at -20°C. Minimize freezing and thawing.
Usage Summary:	Immunohistochemistry: LS-B3590 was validated for use in immunohistochemistry on a panel of 21 formalin-fixed, paraffin-embedded (FFPE) human tissues after heat induced antigen retrieval in pH 6.0 citrate buffer. After incubation with the primary antibody, slides were incubated with biotinylated secondary antibody, followed by alkaline phosphatase-streptavidin and chromogen. The stained slides were evaluated by a pathologist to confirm staining specificity. The optimal working concentration for LS-B3590 was determined to be 5 ug/ml. Western Blot: Extracts of mouse eye (30ug) were resolved by SDS-PAGE, transferred to NC membrane and probed with anti-human CRABP1 (1:500). Proteins were visualized using a goat anti-mouse secondary antibody conjugated to HRP and an ECL detection system.
Uses:	IHC - Paraffin (5 µg/ml), Western blot (1:500 - 1:1000), ELISA (Optimal dilution to be determined by the researcher)
Size:	50 µl
Concentration:	1 mg/ml

Immunohistochemistry Image:



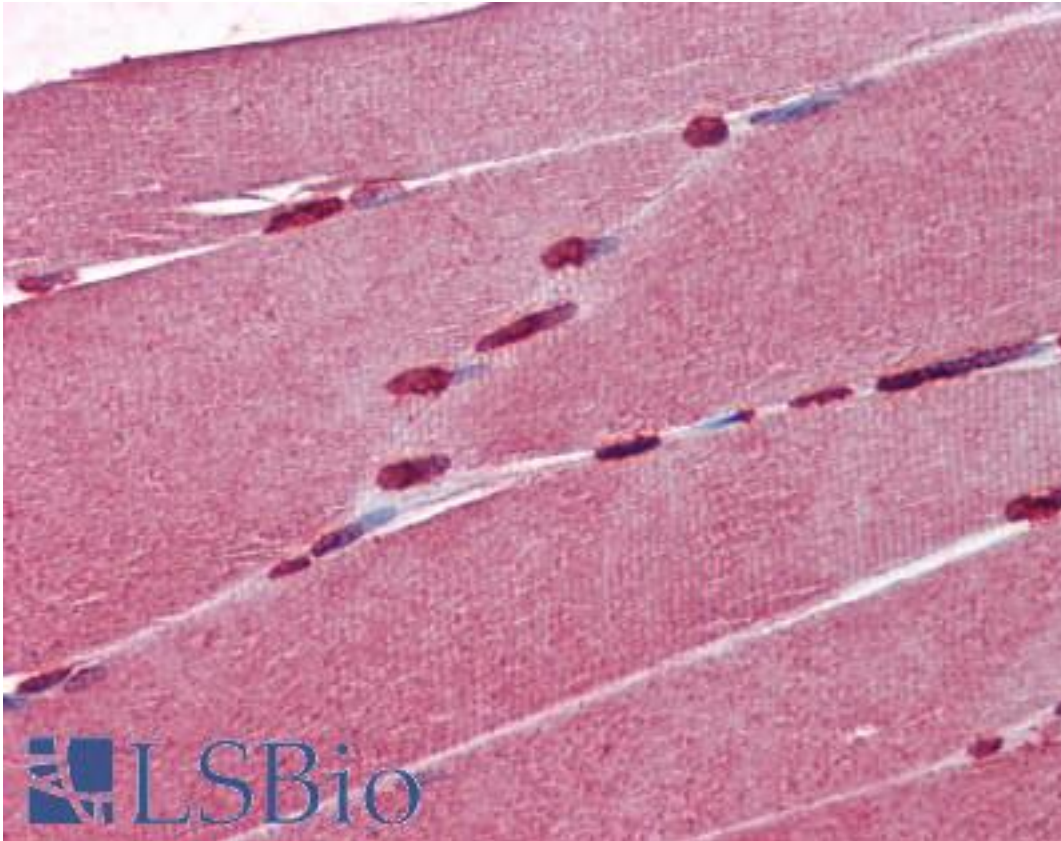
Anti-CRABP1 antibody IHC of human prostate. Immunohistochemistry of formalin-fixed, paraffin-embedded tissue after heat-induced antigen retrieval. Antibody LS-B3590 concentration 5 ug/ml.

Immunohistochemistry Image:



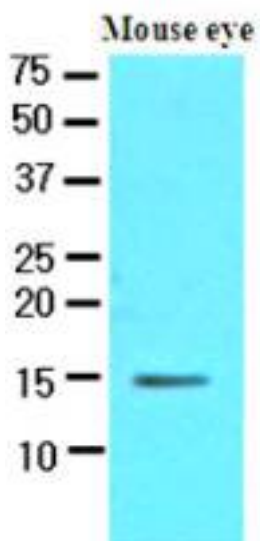
Anti-CRABP1 antibody IHC of human thyroid. Immunohistochemistry of formalin-fixed, paraffin-embedded tissue after heat-induced antigen retrieval. Antibody LS-B3590 concentration 5 ug/ml.

Immunohistochemistry Image:



Anti-CRABP1 antibody IHC of human skeletal muscle. Immunohistochemistry of formalin-fixed, paraffin-embedded tissue after heat-induced antigen retrieval. Antibody LS-B3590 concentration 5 ug/ml.

Western Blot Image:



Western analysis of mouse eye extract.

Requested From:

Japan

Laboratory Reagent For In Vitro Research Use Only

Not for resale without prior written consent from LifeSpan BioSciences, Inc.

Created on 9/23/2014

© 2014 LifeSpan BioSciences