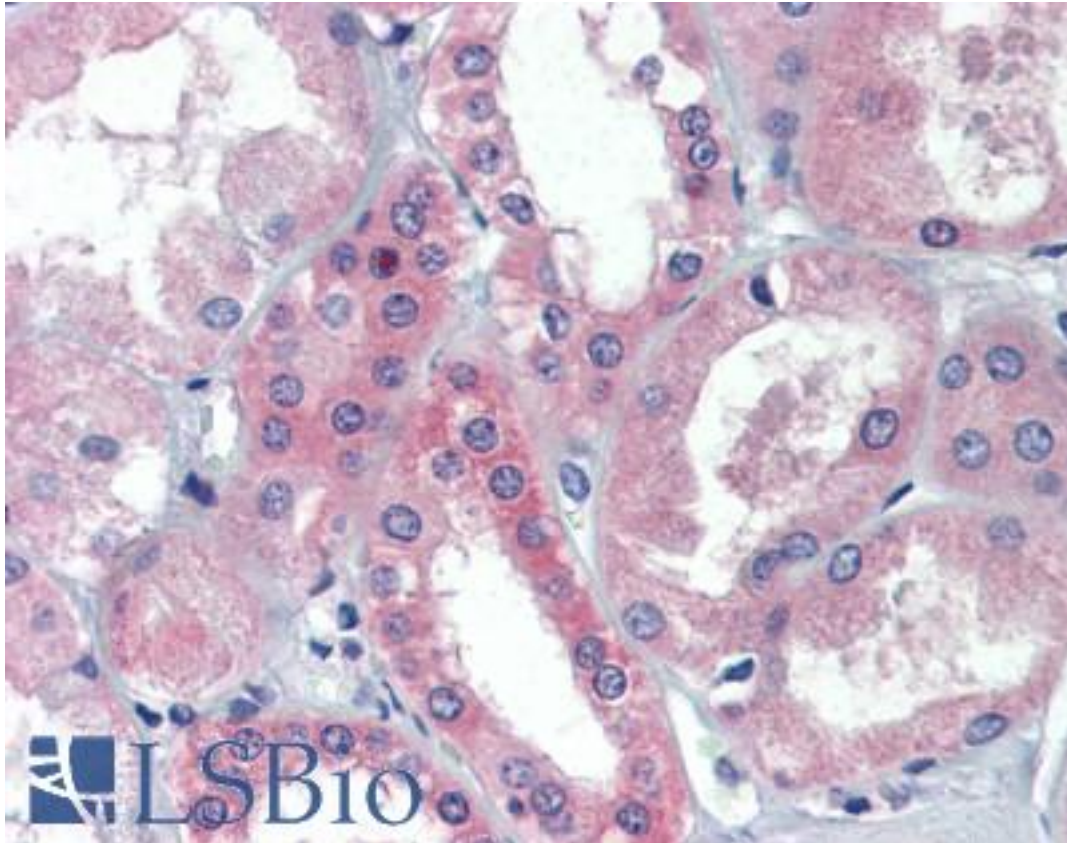


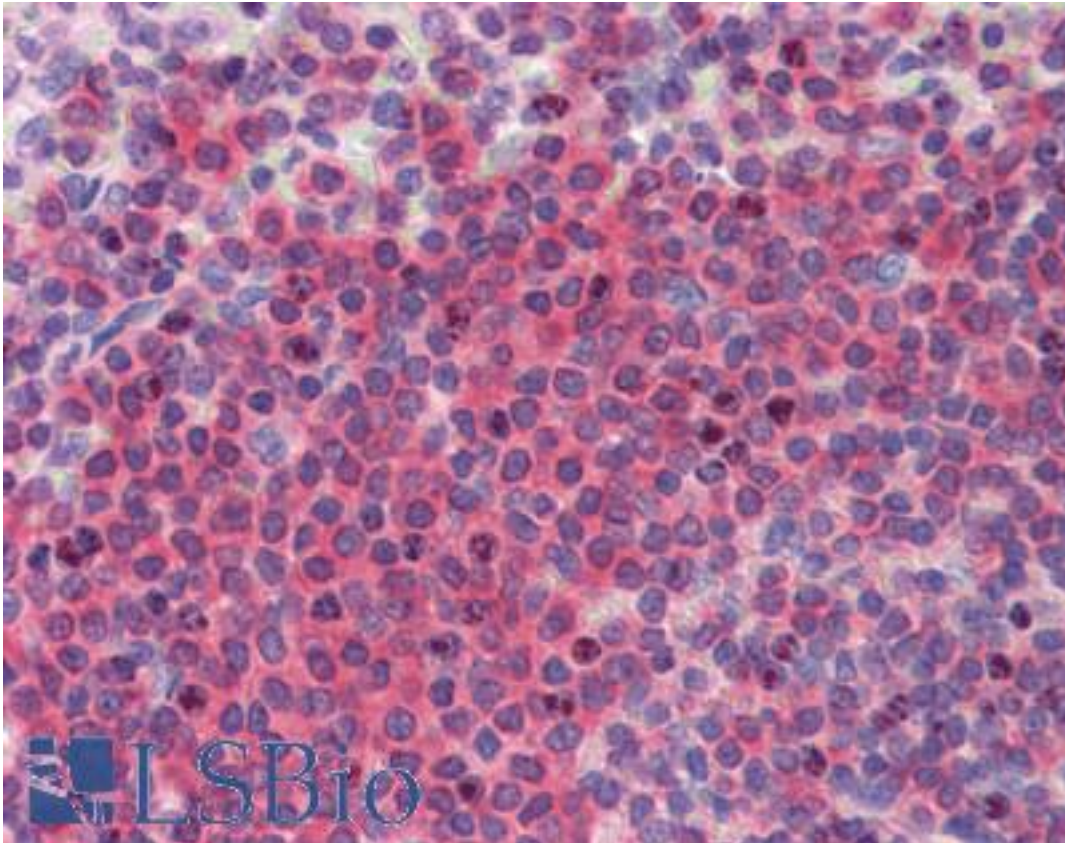
| BRCC3 / BRCC36 Mouse anti-Human Monoclonal (AT3B1) Antibody - LS-B3588 - LSBio | |
|--|--|
| CatalogID: | LS-B3588 |
| Validation: | This antibody replaces catalog number LS-C103495. It has been validated for use in the following assays: IHC-P. |
| Target: | BRCA1/BRCA2-containing complex, subunit 3 (BRCC3) |
| Synonyms: | BRCC3 Antibody, C6.1A Antibody, BRCC36 Antibody, BRISC complex subunit BRCC36 Antibody, BRCA1-A complex subunit BRCC36 Antibody, CXorf53 Antibody, RP11-143H17.2 Antibody |
| Host | BRCC3 antibody was produced in Mouse |
| Clonality: | Monoclonal |
| Isotype: | IgG1,k |
| Clone Name: | AT3B1 |
| Immunogen Species: | BRCC3 / BRCC36 antibody was raised against Human |
| Immunogen: | BRCC3 / BRCC36 antibody was raised against recombinant BRCC36 (1-316aa) purified from E. coli |
| Specificity: | BRCC36 (1-316aa) |
| Reactivity: | Human |
| Purification: | Protein G purified |
| Presentation: | PBS, pH 7.4, 0.1% sodium azide. Sourced in Ascites. |
| Recommended Storage: | Aliquot and store at -20°C. Minimize freezing and thawing. |
| Usage Summary: | Immunohistochemistry: LS-B3588 was validated for use in immunohistochemistry on a panel of 21 formalin-fixed, paraffin-embedded (FFPE) human tissues after heat induced antigen retrieval in pH 6.0 citrate buffer. After incubation with the primary antibody, slides were incubated with biotinylated secondary antibody, followed by alkaline phosphatase-streptavidin and chromogen. The stained slides were evaluated by a pathologist to confirm staining specificity. The optimal working concentration for LS-B3588 was determined to be 5 ug/ml. Western Blot: Cell lysates of HeLa(20 ug) were resolved by SDS-PAGE, transferred to NC membrane and probed with anti-human BRCC36 (1:1000). Proteins were visualized using a goat anti-mouse secondary antibody conjugated to HRP and an ECL detection system. |
| Uses: | IHC - Paraffin (5 µg/ml), Western blot (1:1000 - 1:2000), ELISA (Optimal dilution to be determined by the researcher) |
| Size: | 50 µl |
| Concentration: | 1 mg/ml |

Immunohistochemistry Image:



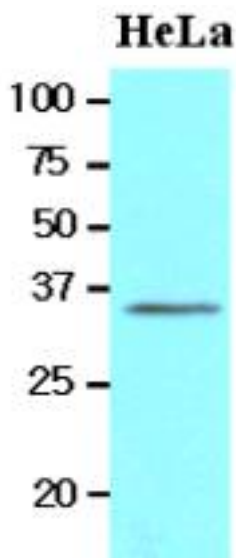
Anti-BRCC3 / BRCC36 antibody IHC of human kidney. Immunohistochemistry of formalin-fixed, paraffin-embedded tissue after heat-induced antigen retrieval. Antibody LS-B3588 concentration 5 ug/ml.

Immunohistochemistry Image:



Anti-BRCC3 / BRCC36 antibody IHC of human spleen. Immunohistochemistry of formalin-fixed, paraffin-embedded tissue after heat-induced antigen retrieval. Antibody LS-B3588 concentration 5 ug/ml.

Western Blot Image:



Western analysis of HeLa cell lysates.

Requested From:

Japan

Laboratory Reagent For In Vitro Research Use Only

Not for resale without prior written consent from LifeSpan BioSciences, Inc.

Created on 9/23/2014

© 2014 LifeSpan BioSciences